

CHECKER MOTORS CORP. KALAMAZOO, MICH.

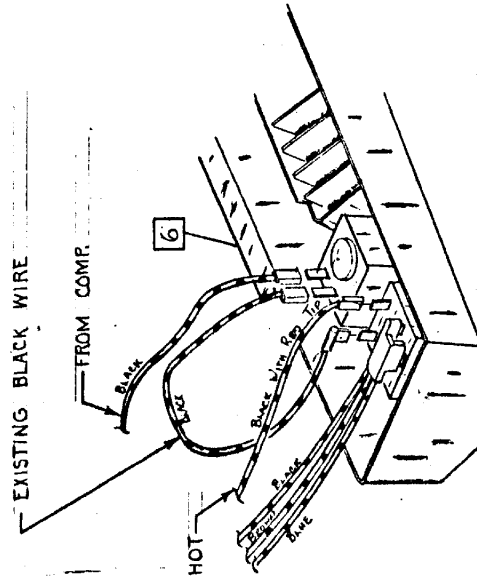
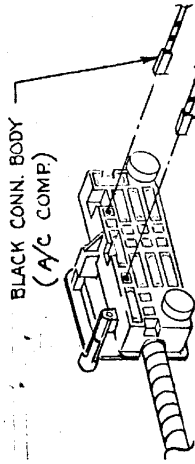
EFFECTIVE MODEL YEAR 1974

MODEL:	A-12	DATE	
A-11	A-12WB	7-26-73	
A-11E	A-12W		
GRAPHIC ILLUSTRATION			
AIR COND. WIRING - FRONT SWAP			
DWN. BY		DATE	
CHK.		CHANGES	
APPVD.			

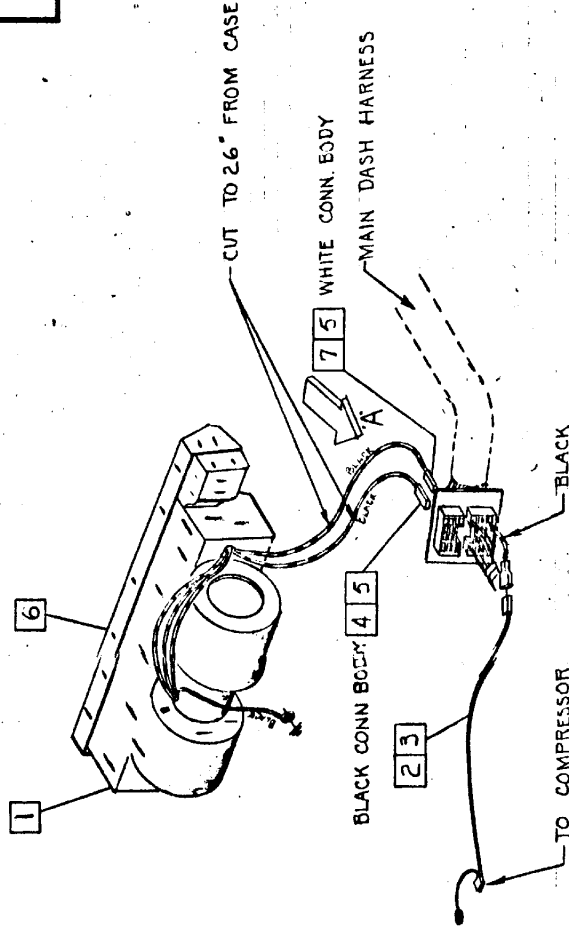
GRAPHIC ILLUSTRATION

AIR COND. WIRING - FRONT SWAP

1. 647893 EVAPORATOR ASM. - AIR COND.
2. 703595 WIRE ASM. - FRIG. COMP. - 8 CYL.
3. 703596 WIRE ASM. - FRIG. COMP. - 6 CYL.
4. 626584 CONNECTOR BODY - BLACK
5. 626782 TERMINAL - FEM. BLADE (2)
6. 647894 BEZEL ASM. - A/C
7. 626809 CONNECTOR BODY - WHITE



VIEW FOR WIRING IN BEZEL



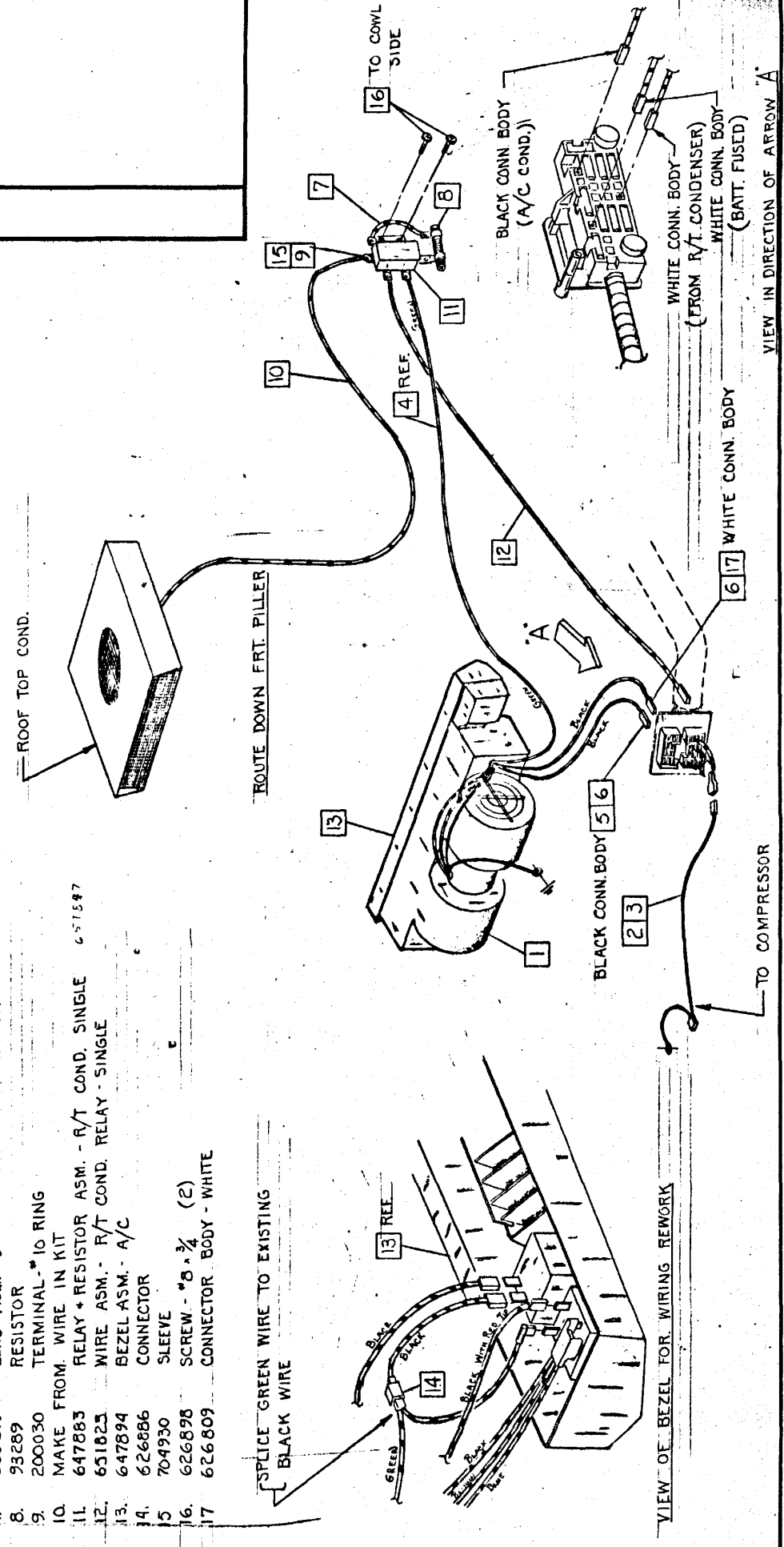
CHECKER MOTORS CORP. KALAMAZOO, MICH.

EFFECTIVE MODEL YEAR 1974

MODEL:	A-12	DATE	7-26-73
A-11	A-12E	A-12W0	
A-11E	A-12W		
GRAPHIC ILLUSTRATION		SHEET NO.	18B-2
AIR COND. - WIRING - SINGLE WITH ROOF TOP COND.		APPVD.	SUPERSEDES G.I. 18A-24

DATE	CHANGES
2-7-74	651823 Was 647884

1. EVAPORATOR ASM. - AIR COND.
2. WIRE ASM. - FRIG. COMP. 8 CYL.
3. WIRE ASM. - FRIG. COMP. 6 CYL.
4. WIRE ASM. - R/T CONDENSER CONT.
5. CONNECTOR BODY - BLACK
6. TERMINAL - FEM. BLADE (2)
7. LEAD ASM. - 3"
8. RESISTOR
9. TERMINAL - * 10 RING
10. MAKE FROM WIRE IN KIT
11. RELAY + RESISTOR ASM. - R/T COND. SINGLE 651897
12. WIRE ASM. - R/T COND. RELAY - SINGLE
13. BEZEL ASM. - A/C
14. CONNECTOR
15. SLEEVE
16. SCREW - * 8 x 1/4 (2)
17. CONNECTOR BODY - WHITE

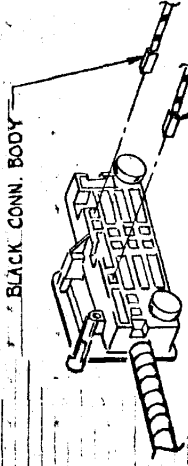


CHECKER MOTORS CORP. KALAMAZOO, MICH.

EFFECTIVE MODEL YEAR 1974

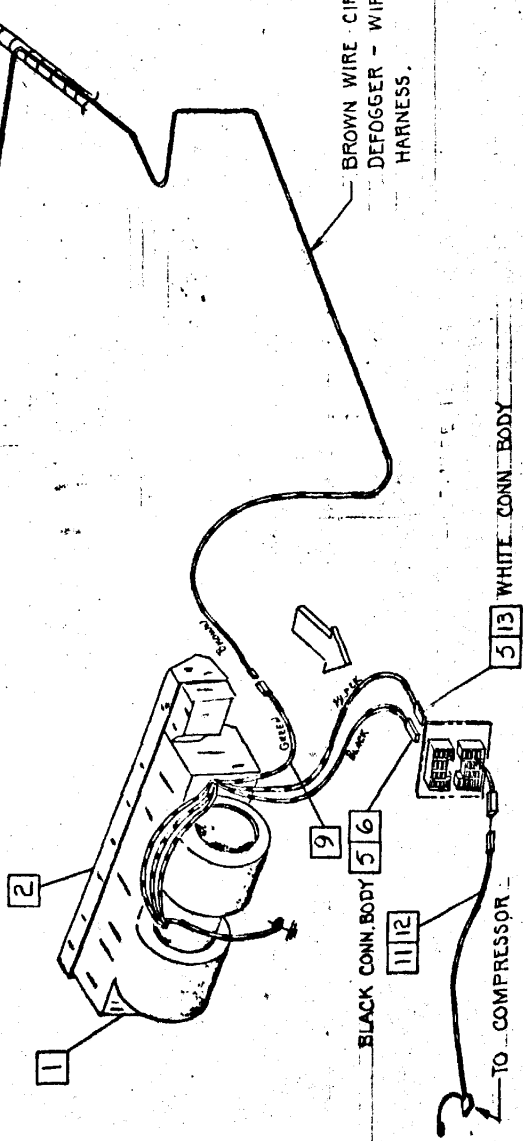
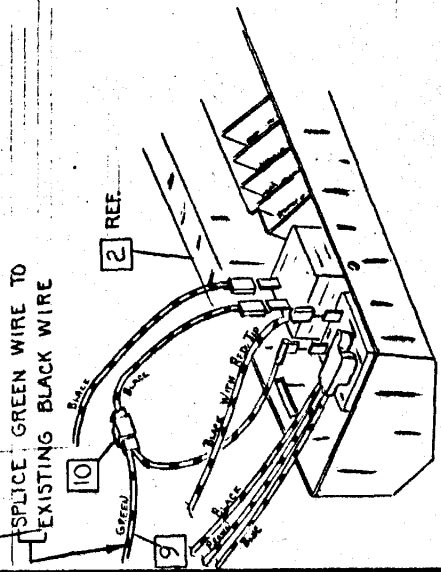
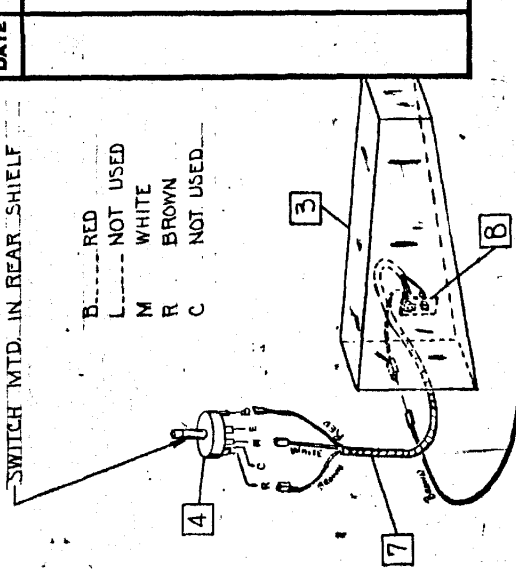
MODEL:	A-11E	DATE	7-26-73
APPVD.		CHANGES	
DWN. CHK.		SHEET NO.	18 B-3
APPVD.		SUPERSEDES	G.I. 18 A-25

1. 647893 EVAPORATOR ASM. - AIR COND.
2. 647894 BEZEL ASM. - A/C
3. 651584 AIR COND. ASM. COMPL - DUAL
4. 639570 SWITCH ASM. - A/C
5. 626782 TERMINAL - FEM. BLADE (2)
6. 626584 CONNECTOR BODY - BLACK
7. 651595 HARNESS ASM. - REAR EVAP.
8. 647035 RESISTOR ASM. - BLOWER
9. 647901 WIRE ASM. - REAR EVAP CONNECTOR
10. 626886 WIRE ASM. - FRIG. COMP - 8 CYL.
11. 703595 WIRE ASM. - FRIG. COMP. - 6 CYL.
13. 626809 CONNECTOR BODY - WHITE



VIEW IN DIRECTION OF ARROW 'A'

- B. --- RED
- L. --- NOT USED
- M. --- WHITE
- R. --- BROWN
- C. --- NOT USED.



CHECKER MOTORS CORP. KALAMAZOO, MICH.

EFFECTIVE MODEL YEAR 1974

MODEL:

B-12WB

DATE

7-26-73

GRAPHIC ILLUSTRATION

DWN. *Urso*

SHEET NO. 18B-4

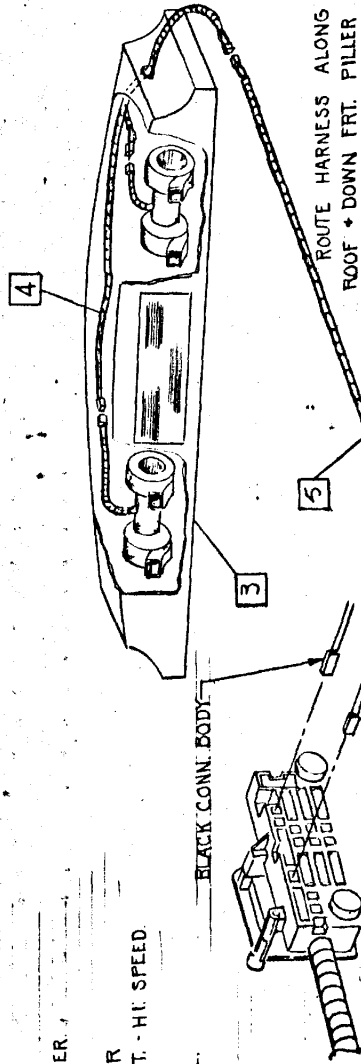
AIR COND. WIRING. - DUAL AERSEJUS

APPVD. SUPERSEDES G.I. 18 A-26

CHANGES

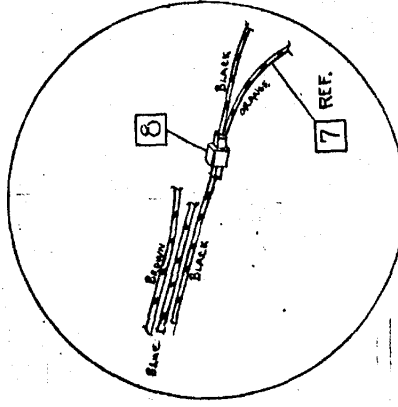
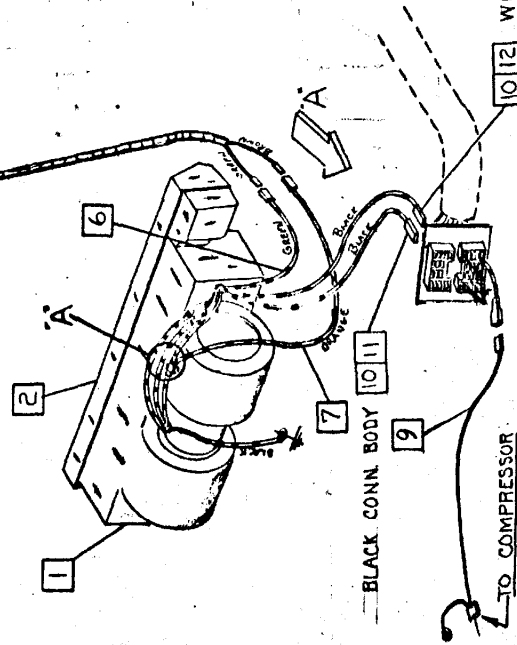
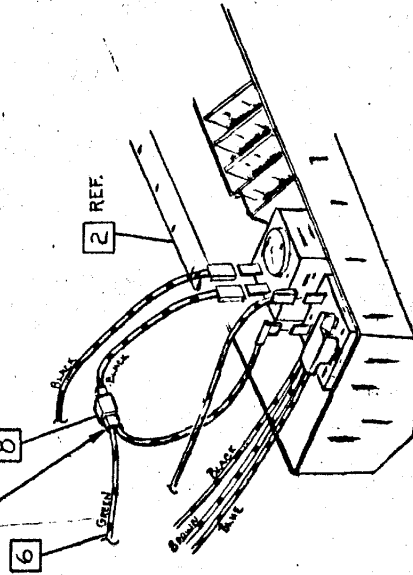
DATE

1. 647893 EVAPORATOR ASM. - AIR COND.
2. 647894 BEZEL ASM. - A/C
3. 643627 AIR COND. ASM. - REAR
4. 639758 HARNESS ASM. - REAR A/C BLOWER
5. 635612 HARNESS ASM. - REAR A/C
6. 647901 WIRE ASM. - REAR EVAP. FEEDER
7. 647761 WIRE ASM. - REAR EVAP. FAN CONT. - HI. SPEED
8. 626886 CONNECTOR (2)
9. 703595 WIRE ASM. - FRIG. COMP. - 8 CYL.
10. 626782 TERMINAL - FEM. BLADE (2)
11. 626564 CONNECTOR BODY - BLACK
12. 626809 CONNECTOR BODY - WHITE



BLACK CONN. BODY
WHITE CONN. BODY
VIEW IN DIRECTION ARROW A

SPLICE GREEN WIRE TO EXISTING BLACK WIRE



CHECKER MOTORS CORP. KALAMAZOO, MICH.

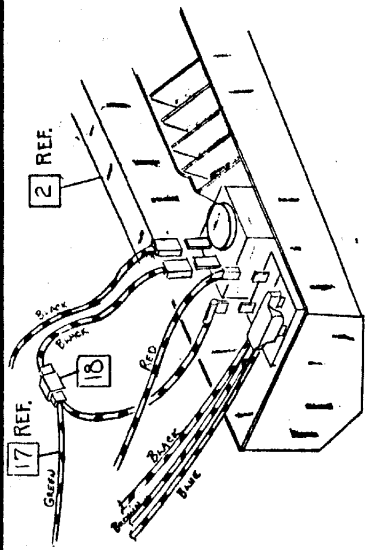
EFFECTIVE MODEL YEAR 1974

MODEL:	DATE	DWN. BY:	SHEET NO.
A-11E	7-26-73	CHK.	18B-5
A-12E		APPVD.	SUPERSEDES G.I. 18A:27

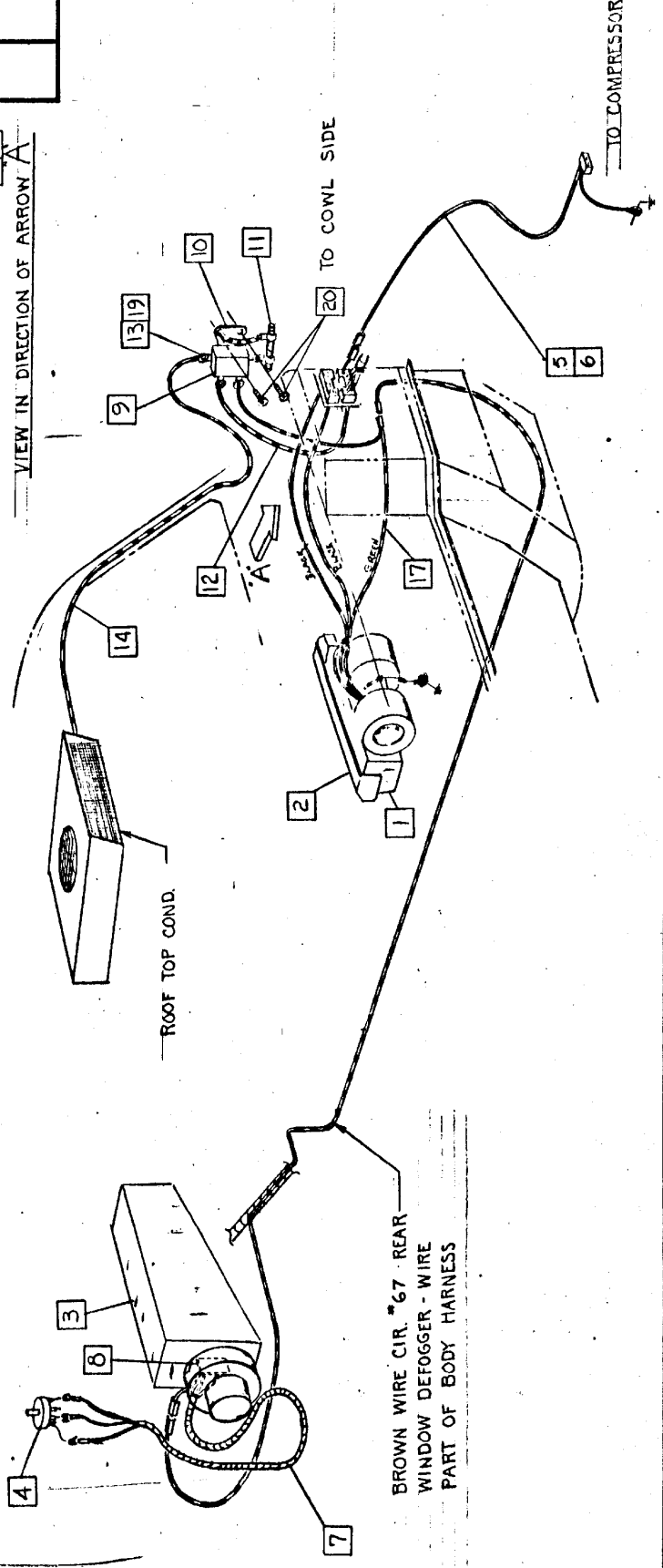
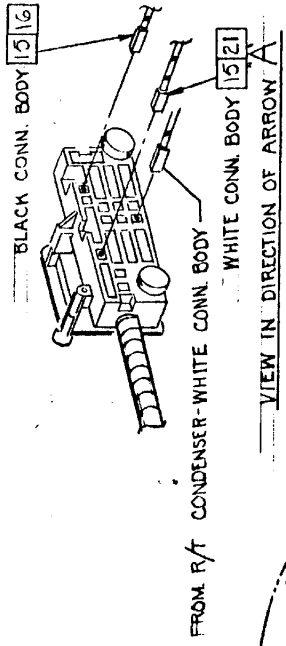
GRAPHIC ILLUSTRATION

AIR COND WIRING - DUAL W/ ROOF TOP COND.

DATE	CHANGES



PART NO'S SEE G.I. 18B-7



BROWN WIRE CIR. '67 REAR WINDOW DEFOGGER - WIRE PART OF BODY HARNESS

MODEL: A-11E	A-12E	A-12W6	DATE	7-26-73
GRAPHIC ILLUSTRATION			DWN. CHK.	
AIR COND. WIRING - DUAL W/ ROOF TOP COND.			APPVD.	
SHEET NO. 18 B-7			DATE	2-7-74
SUPERSEDES G.I. 18 A-29			CHANGES	651823 W# 647884

PARTS FOR G.I. 18B-5

1. 647893 EVAPORATOR ASM. - AIR COND.
2. 647894 BEZEL ASM. - A/C
3. 651584 AIR. COND. ASM. - COMPL. - REAR
4. 639570 SWITCH ASM. - A/C
5. 703595 WIRE ASM. - FRIG. COMP. 8 CYL.
6. 703596 WIRE ASM. - FRIG. COMP. 6 CYL.
7. 651595 HARNESS ASM. - REAR EVAP.
8. 647035 RESISTOR ASM. - BLOWER.
9. 647885 RELAY + RESISTOR ASM. - R/T COND.
10. 639040 RELAY ASM. (REF)
11. 93289 RESISTOR (REF)
12. 651823 WIRE ASM. - R/T COND. RELAY (REF)
13. 200030 TERMINAL *10 RING
14. MAKE FROM WIRE IN KIT
15. 626782 TERMINAL - FEM. BLADE (2)
16. 626584 CONNECTOR BODY - BLACK
17. 647902 WIRE ASM. - R/T COND. FAN CONT. - DUAL
18. 626886 CONNECTOR
19. 704930 SLEEVE
20. 626898 SCREW *8 * 3/4 (2)
21. 626809 CONNECTOR BODY - WHITE

PARTS FOR G.I. 18B-6

1. 647893 EVAPORATOR ASM. - AIR COND.
2. 647894 BEZEL ASM. - A/C
3. 643627 AIR COND. ASM. - REAR
4. 639755 HARNESS ASM. - REAR A/C BLOWER
5. 635612 HARNESS ASM. - REAR A/C
6. 647885 RELAY + RESISTOR ASM. - R/T COND.
7. 639040 RELAY ASM. (REF)
8. 93289 RESISTOR (REF.)
9. 651823 WIRE ASM. - R/T COND. RELAY (REF)
10. 200030 TERMINAL *10 RING
11. MAKE FROM WIRE IN KIT
12. 626782 TERMINAL - FEM. BLADE (2)
13. 626584 CONNECTOR BODY - BLACK
14. 647902 WIRE ASM. - R/T COND. FAN CONT. - DUAL
15. 626886 CONNECTOR (2)
16. 704930 SLEEVE
17. 647761 WIRE ASM. - REAR EVAP. FAN CONT. - HI SPEED
18. 703595 WIRE ASM. - FRIG. COMP. 8 CYL.
19. 626898 SCREW *8 * 3/4 (2)
20. 626809 CONNECTOR BODY - WHITE

CHECKER MOTORS CORP. KALAMAZOO, MICH.

GRAPHIC ILLUSTRATION

DWN. DEKKER
CHK. #65 / 2.8/74

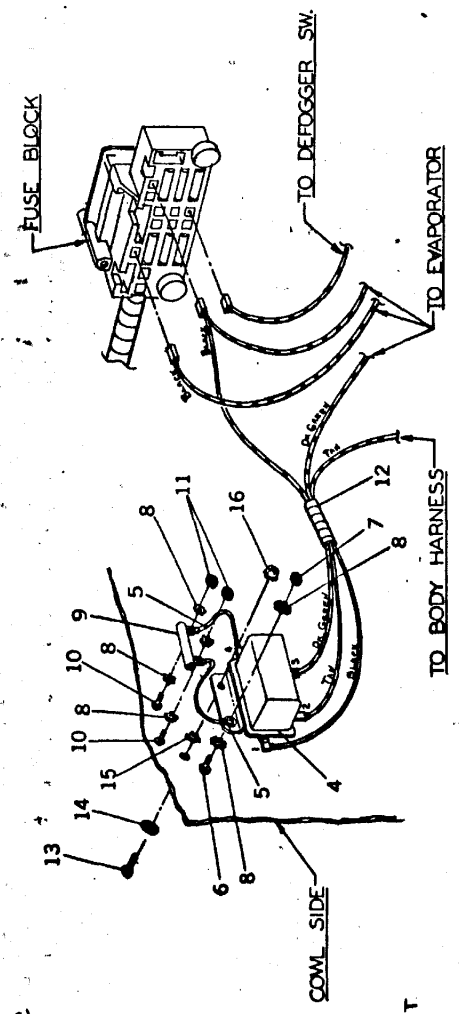
SHEET NO. 18B-9

AIR COND. WIRING - DUAL WITH REAR WINDOW DEFOGGER

MODEL A-12
A-12E
A-11E

DATE 1-25-74

1. 647970 HARNESS ASM. - REAR DEF. SW.
2. 635534 SWITCH ASM. - FLR. MTD. HEATER
3. 651822 RELAY + HARNESS ASM. - DUAL A/C
- 651824 RELAY + RESISTOR ASM. - A/C
4. 639040 RELAY ASM. - DELCO
5. 635279 LEAD ASM. - RELAY CLUSTER (2)
6. 132900 SCREW #10-32 x 3/8 RD.
7. 120614 NUT #10-32 HEX.
8. 138479 L.W. #10 EXT TOOTH (6)
9. 93289 RESISTOR
10. 147671 SCREW #8-32 x 1/2 (2)
11. 120622 NUT #8-32 HEX. (2)
12. 651821 HARNESS ASM. - DUAL A/C RELAY
13. 120854 BOLT 1/4-20 x 3/8 HEX.
14. 626930 WASHER + SEALER ASM. - 3/8 O.D.
15. 138485 L.W. 3/8 EXT. TOOTH
16. 271172 NUT + EXT. TOOTH L.W. ASM. - 1/4-20
17. 651820 HARNESS ASM. - ROOF + DOME LIGHT



VIEW IN DIRECTION OF ARROW 'B'

DATE	CHANGES