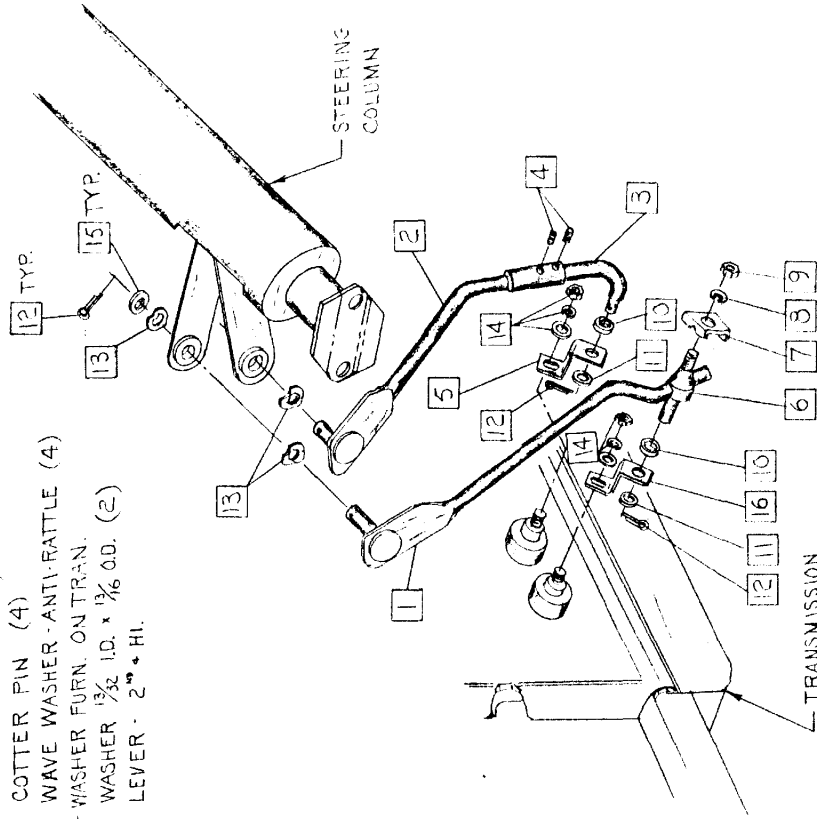


MODEL:	B-12WB	DATE	9-16-70	GRAPHIC ILLUSTRATION	DWN. DEKNER	SHEET NO. 410 A-1
				TRANSMISSION CONTROLS - STD. TRANS.	CHK. R.P.	
				APPRD.		

1. 701309 ROD ASSEM. 2" x 3" GEAR
2. 703717 ROD + TUBE ASSEM. - LOW + REV. GEAR - UPPER
3. 704799 ROD - LOW + REV. GEAR - LOWER
4. 139011 SCREW - 1/4-28 x 3/8 HEX SOCKET SET (2)
5. 94946 LEVER - 1" + REV.
6. 94553 SWIVEL - TRANS. SHIFT ROD
7. 94559 CLAMP
8. 120214 L.W. 5/16 MED. SPRING
9. 120368 NUT 5/16-24 HEX.
10. 94949 BUSHING (2)
11. 94941 WASHER - NYLON (2)
12. 121222 COTTER PIN (4)
13. 626356 WAVE WASHER - ANTI-RATTLE (4)
14. NUT, L.W. + WASHER FURN. ON TRAN.
15. 120394 WASHER 1 3/8 I.D. x 1 3/8 O.D. (2)
16. 704969 LEVER - 2" + HI.



- AEROBUS STANDARD TRANSMISSION LINKAGE ADJUSTMENT PROCEDURE
1. PLACE COLUMN HAND SHIFT LEVER IN "REVERSE" POSITION AND IGNITION SWITCH IN "LOCK" POSITION.
  2. POSITION THE TRANSMISSION LOW/REVERSE LEVER IN "REVERSE".
  3. INSTALL THE LOW/REVERSE ROD ASSEM. COMPLETE TO THE COLUMN LEVER AND THE TRANSMISSION LOW/REVERSE LEVER. THE SET SCREWS [4] IN THE ROD AND TUBE ASSEM. [2] SHOULD BE LOOSE SO THAT THE LOWER ROD [3] WILL SLIDE FREELY.
  4. PULL DOWN SLIGHTLY ON THE LOW/REVERSE ROD ATTACHED TO THE COLUMN LEVER TO REMOVE ANY SLACK IN THE COLUMN MECHANISM AND THEN TIGHTEN BOTH SET SCREWS SECURELY IN CLAMP TUBE.
  5. UNLOCK IGNITION SWITCH AND SHIFT COLUMN LEVER TO THE "NEUTRAL" POSITION. ALIGN BOTH COLUMN LOWER LEVERS IN "NEUTRAL" POSITION BY ALIGNING GAGE HOLES IN LEVERS AND INSERT A 3/16" DIA. GAGE PIN.
  6. INSTALL 2" x 3" ROD [1] TO COLUMN AND TRANSMISSION AND TIGHTEN CLAMP SECURELY.
  7. REMOVE ALIGNMENT TOOL FROM COLUMN LOWER LEVERS AND CHECK SHIFT OPERATION. THEN PLACE THE COLUMN SHIFT LEVER IN "REVERSE" AND CHECK THE INTERLOCK CONTROL.

NOTE: WITH THE SHIFT LEVER IN "REVERSE" THE IGNITION KEY MUST MOVE FREELY TO "LOCK" POSITION. IT MUST NOT BE POSSIBLE TO OBTAIN "LOCK" POSITION IN "NEUTRAL" OR ANY GEAR OTHER THAN "REVERSE".

2-16-71 704969 W/s 94946

CHANGES

CANCELLED OPTION DISCONTINUED

CHECKER MOTORS CORP. KALAMAZOO, MICH.

EFFECTIVE OCT. 1, 1970

DWN. DESKER  
CHK. *DDP*  
APPVD.

SHEET NO. 410 A-2

GRAPHIC ILLUSTRATION

TRANSMISSION CONTROLS - AUTO. TRANS. 6 + 8 CYL.

DATE

9-16-70

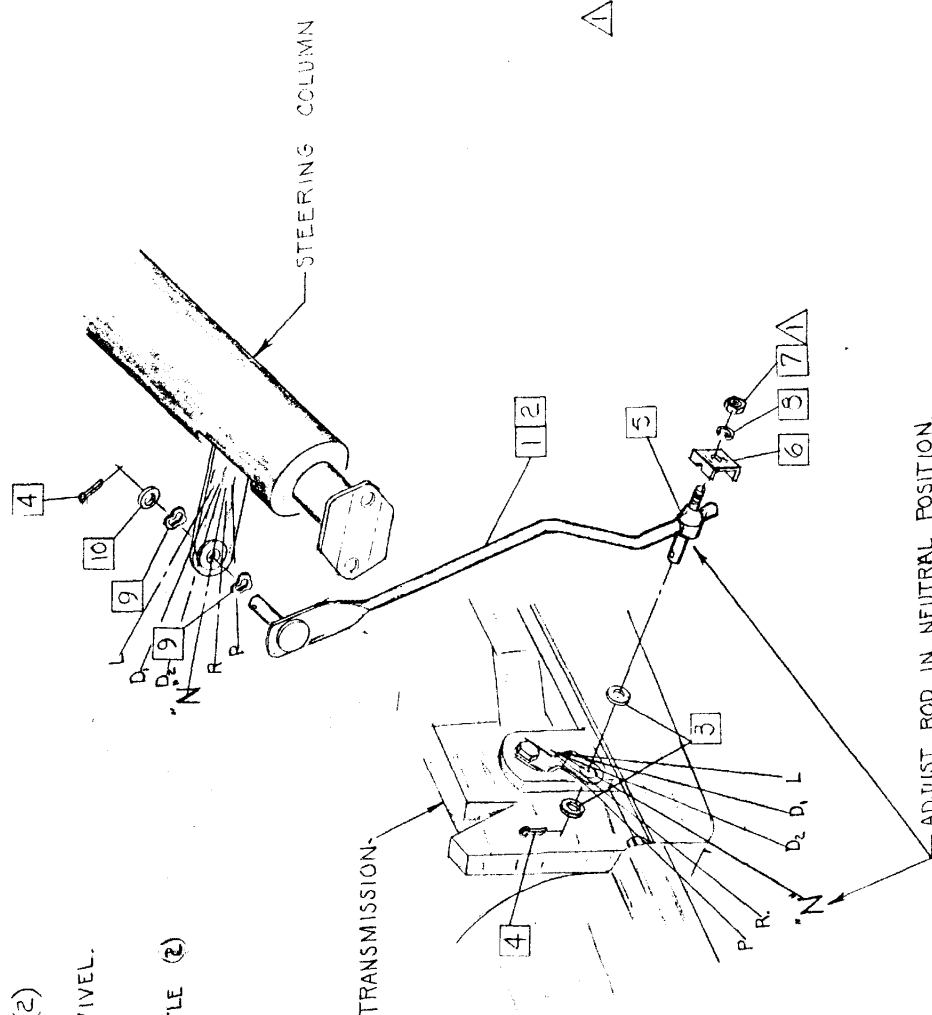
MODEL: B-11E

B-12E

B-12W

1. 703523 ROD ASSEM. - TRANS. SHIFT (AUTO. V-8)
2. 703715 ROD ASSEM. - TRANS. SHIFT. (AUTO. 6 CYL.)
3. 94941 WASHER (NYLON) (2)
4. 121222 COTTER PIN  $\frac{3}{32} \times \frac{3}{4}$  (2)
5. 94558 SWIVEL-TRANS. ROD
6. 94559 CLAMP-TRANS. ROD SWIVEL.
7. 120368 NUT  $\frac{5}{16}$ -24 HEX.
8. 120214 L.W.  $\frac{5}{16}$  MED. SPRING
9. 626356 WAVE WASHER - ANTI-RATTLE (2)
10. 120394 WASHER  $\frac{1}{32}$  I.D.  $\times \frac{1}{16}$  O.D.

CHANGES  
3-23-71 ROD ADJUST NOTE ADDED  
~ 15-17 TORQUE ADDED



CANCELLED SUPERCEDED BY G.I.410 A-3, A-4

CHECKER MOTORS CORP. KALAMAZOO, MICH.

EFFECTIVE OCT 1, 1971

SHEET NO. 410 A-3

DWN. DEKKER  
CHK.

APPVD.

GRAPHIC ILLUSTRATION

TRANSMISSION CONTROLS - 6 CYL. AUTOMATIC

DATE

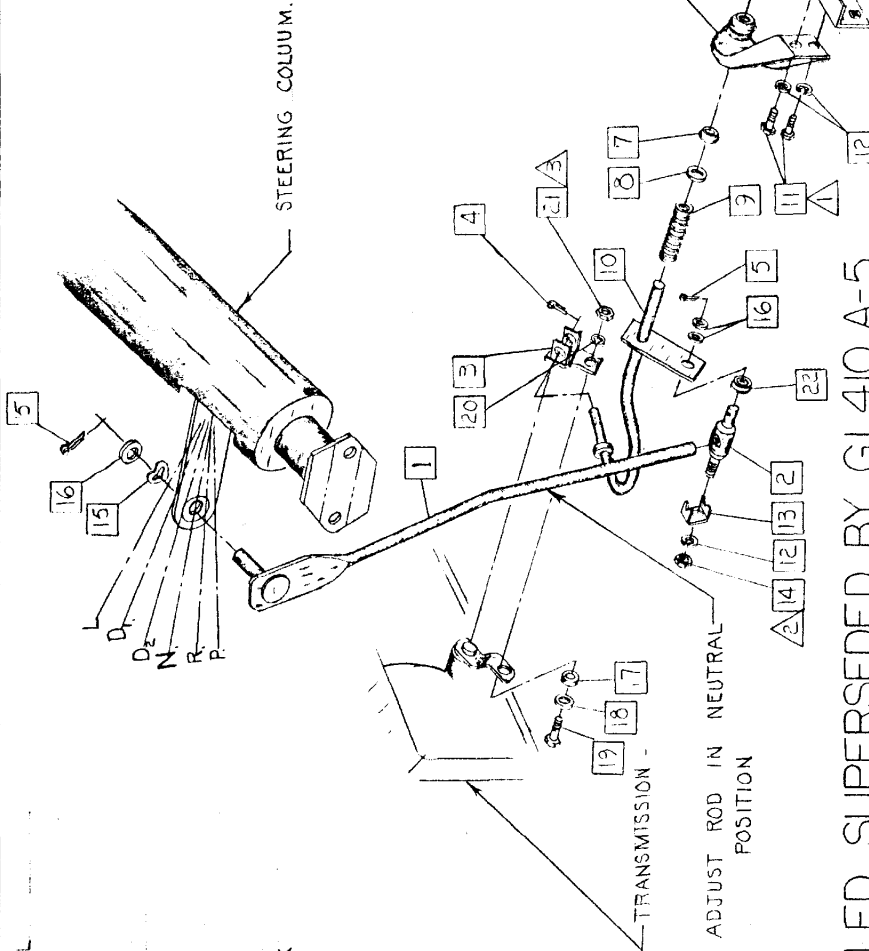
8-20-71

MODEL:

B-11  
B-12E  
B-12W  
B-11E

ROD ASM. - AUTO. TRANS. SHIFT - 6 CYL.

- 1. 705010 SWIVEL - TRANS. CONT. ROD
- 2. 94553 LEVER ASM. - MANUAL CONT. OUTER
- 3. 705009 RETAINER - RANGE SEL.
- 4. 706032 COTTER PIN (2)
- 5. 121222 BRACKET - TRANS. CONT. SHAFT SUPPORT
- 6. 706144 BUSHING - TRANS. CONT. EQLZR. SHAFT.
- 7. 706024 WASHER - TRANS. CONT. EQLZR. SHAFT.
- 8. 706023 SPRING - TRANS. CONT. EQLZR. SHAFT.
- 9. 706022 SHAFT ASM. - TRANS. CONTROL B/CRANK
- 10. 705007 BOLT  $\frac{3}{16}$ -24 x  $\frac{3}{4}$  HEX. (2)
- 11. 181595 L.W.  $\frac{3}{16}$  MED. SPRING. (3)
- 12. 120214 CLAMP - TRANS. SHIFT ROD.
- 13. 94559 WASHER - WAVE
- 14. 120365 WASHER - NYLON (3)
- 15. 626356 WASHER -  $\frac{1}{16}$  ID. x  $\frac{3}{4}$  OD.
- 16. 94941 WASHER -  $\frac{7}{16}$  ID. x 1 OD.
- 17. 702262 BOLT  $\frac{3}{8}$ -24 x 1 HEX.
- 18. 120358 L.W.  $\frac{3}{8}$  MED SPRING
- 19. 181637 NUT  $\frac{3}{8}$ -24 HEX.
- 20. 120382 INSULATOR ASM. - CONT. LEVER
- 21. 120369
- 22. 705023



CANCELLED SUPERSEDED BY G1.410 A-5

- △ 1 15-17 FT. LBS. TORQUE
- △ 2 13-15 FT. LBS. TORQUE
- △ 3 25-30 FT. LBS. TORQUE

CHECKER MOTORS CORP. KALAMAZOO, MICH.

EFFECTIVE OCT 1, 1971

GRAPHIC ILLUSTRATION

SHEET NO. 410 A-4

DWN. DEKKER  
CHK.

TRANSMISSION CONTROLS - 8 CYL. AUTOMATIC

DATE

8-20-71

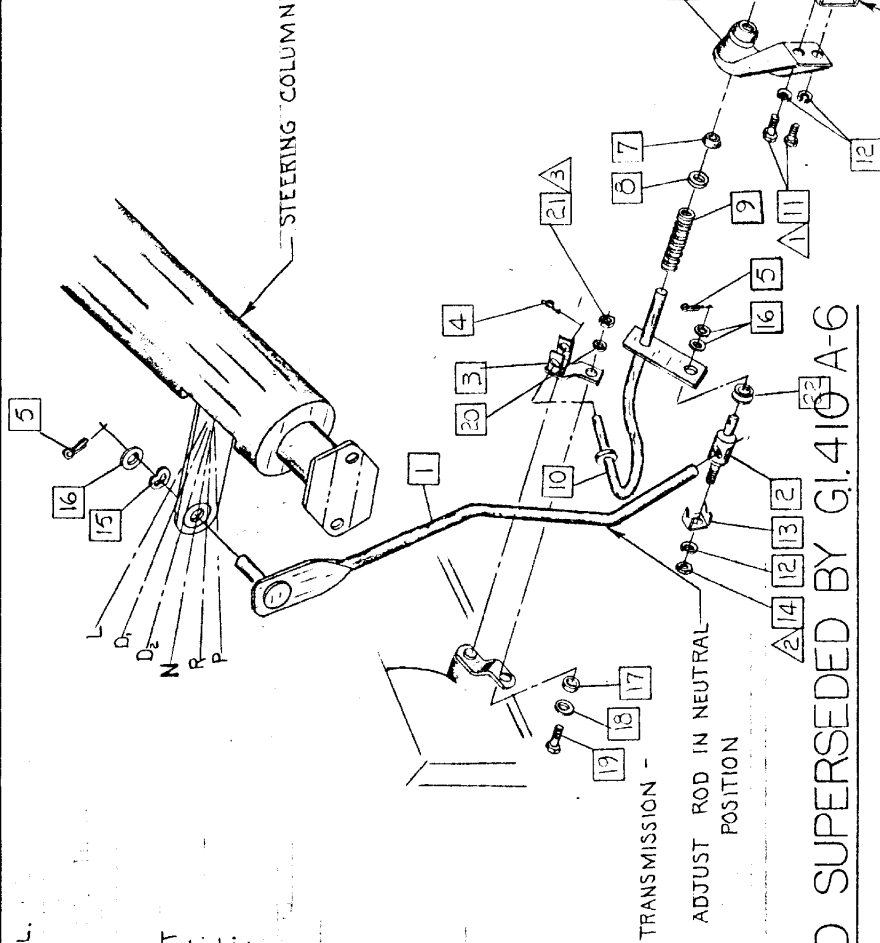
MODEL: B-12

B-12E B-12WB

B-11E B-12W

APPVD.

DATE	CHANGES
12-2-71	REV. OF 3
7-21-72	702262 WAS 706140



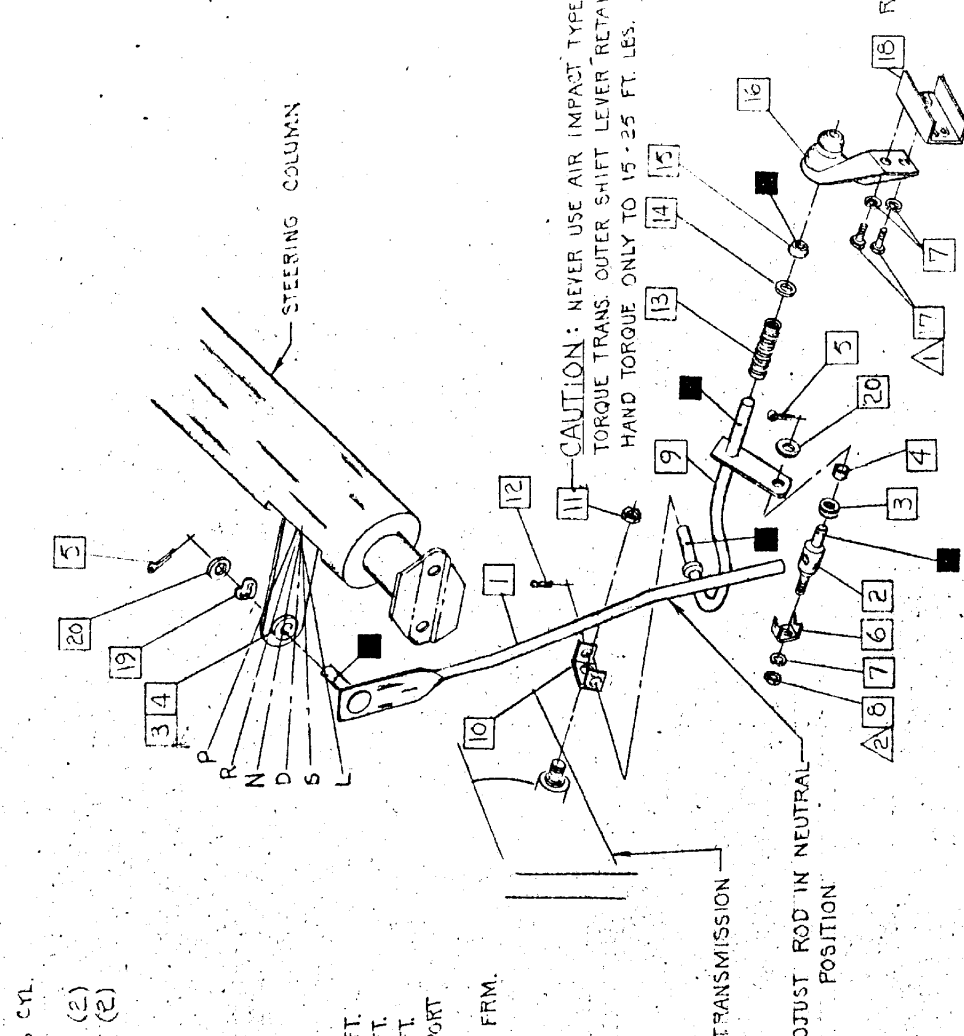
- △ 15 - 17 FT. LBS. TORQUE
- △ 13 - 15 FT. LBS. TORQUE
- △ 25 - 30 FT. LBS. TORQUE

CHECKER MOTORS CORP. KALAMAZOO, MICH.

EFFECTIVE

MODEL:	B-12	DATE	11-10-72
	B-12E	GRAPHIC ILLUSTRATION	
	B-12W	TRANSMISSION CONTROLS - 6 CYL. HYDRA-MATIC	
		APPRV. SUPERSEDS	G.I. 410 A 3 PER MEMO 324
		DWN. DATE	3-27-73
		CHK. DATE	4-18-73
		WAS. NO.	7766355
		ADDRESSES	(1) 94541 ADDRS 120377 WAS. 626779

DATE	CHANGES
3-27-73	706376 WAS. 7766355
4-18-73	120377 WAS. 626779



1. 705189 ROD ASM. - AUTO. TRANS. SHIFT 6 CYL.
2. 94559 SWIVEL - TRANS. CONT. ROD.
3. 704128 GROMMET - STRG. COL. GEAR SHIFT. (2)
4. 704129 BUSHING - STRG. COL. GEAR SHIFT. (2)
5. 121222 OUTER PIN - 3/32 x 3/4 (2)
6. 94559 CLAMP - TRANS. SHIFT ROD
7. 120214 LW. 3/16 MED. SPRING (3)
8. 120368 NUT 3/16 - 24 HEX.
9. 705154 SHAFT ASM. - TRANS.
10. 706396 LEVER-RANGE SEL. - TRANS. OUTER
11. 120377 NUT 3/8 - 16 HEX.
12. 706032 RETAINER - RANGE SEL.
13. 706022 SPRING - TRANS. CONT. EQLZR. SHAFT.
14. 706023 WASHER - TRANS. CONT. EQLZR. SHAFT.
15. 706024 BUSHING - TRANS. CONT. EQLZR. SHAFT.
16. 706144 BRACKET - TRANS. CONT. SHAFT SUPPORT
17. 181595 BOLT 3/16 - 24 x 3/4 HEX. (2)
18. 705008 BRACKET - NUT ASM. - TRANS. CONT. FRM.
19. 626356 WASHER - WAVE
20. 94341 WASHER - NYLON (2)

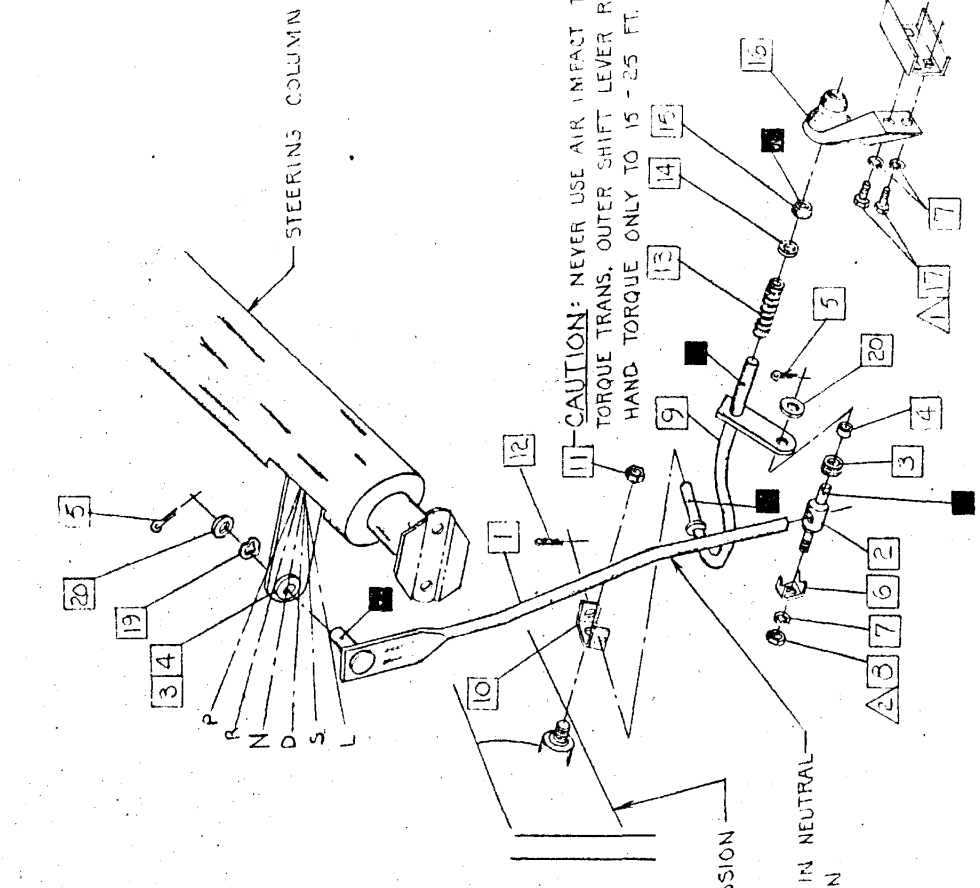
- ▲ 15 - 17 LBS. FT. TORQUE
- LUBRICATE WITH MI-106 CHASSIS LUBE
- ▲ 13 - 15 LBS. FT. TORQUE

REF ONLY WELDED ON FRAME

CHECKER MOTORS CORP. KALAMAZOO, MICH.

MODEL: B-12	DATE: 11-13-72	DWN. DEKKER	SHEET NO. 410A-6
B-12E	B-12W	CHK.	
B-12W		APPVD.	GI. 410 A-4 PER MEMO 356
GRAPHIC ILLUSTRATION		TRANSMISSION CONTROLS - 8 CYL. HYDRA-MATIC	

DATE	CHANGES
3-5-72	706032 WAS 706035
3-27-72	(1) 94941 Added
4-18-72	120377 WAS 626779



1. 705190 ROD ASM. - AUTO. TRANS. SHIFT 8 CYL.
2. 94553 SWIVEL - TRANS. CONT. ROD
3. 704123 GROMMET - STRG. COL. GEAR SHIFT (2)
4. 704129 BUSHING - STRG. COL. GEAR SHIFT. (2)
5. 121222 COTTER PIN  $\frac{3}{32} \times \frac{3}{4}$  (2)
6. 94559 CLAMP - TRANS. SHIFT ROD
7. 120214 L.W.  $\frac{3}{16}$  MED. SPRING (3)
8. 120368 NUT  $\frac{3}{16} \times 24$  HEX.
9. 705184 SHAFT ASM. - TRANS. CONTROL B/CRANK
10. 706996 LEVER - RANGE SEL. TRANS. CONT.
11. 120377 NUT  $\frac{3}{8} \times 16$  HEX.
12. 706032 RETAINER - RANGE SEL.
13. 706022 SPRING - TRANS. CONT. EQLZR. SHAFT
14. 706023 WASHER - TRANS. CONT. EQLZR. SHAFT.
15. 706024 BUSHING - TRANS. CONT. EQLZR. SHAFT.
16. 706144 BRACKET - TRANS. CONT. SHAFT. SUPPORT
17. 181595 BOLT  $\frac{3}{16} \times 24 \times \frac{3}{4}$  HEX. (2)
18. 705008 BRACKET + NUT ASM. - TRANS. CONT. FRM.
19. 626356 WASHER - WAVE
20. 94941 WASHER - NYLON (2)

▲ 15-17 LBS. FT. TORQUE  
 ▲ 13-15 LBS. FT. TORQUE

■ LUBRICATE WITH MI-106 CHASSIS LUBE

▲ REF. ONLY WELDED ON FRAME

CHECKER MOTORS CORP. KALAMAZOO, MICH.

EFFECTIVE OCT 1, 1970

MODEL: B-12  
B-11 B-12E  
B-11E B-12W

DATE  
9-16-70

GRAPHIC ILLUSTRATION  
TRANSMISSION CONTROLS - KICK-DOWN SW. WIRING

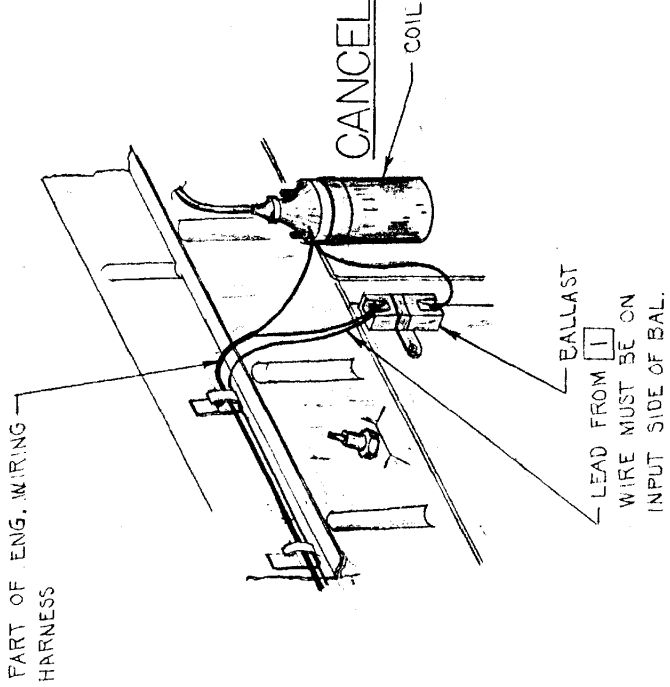
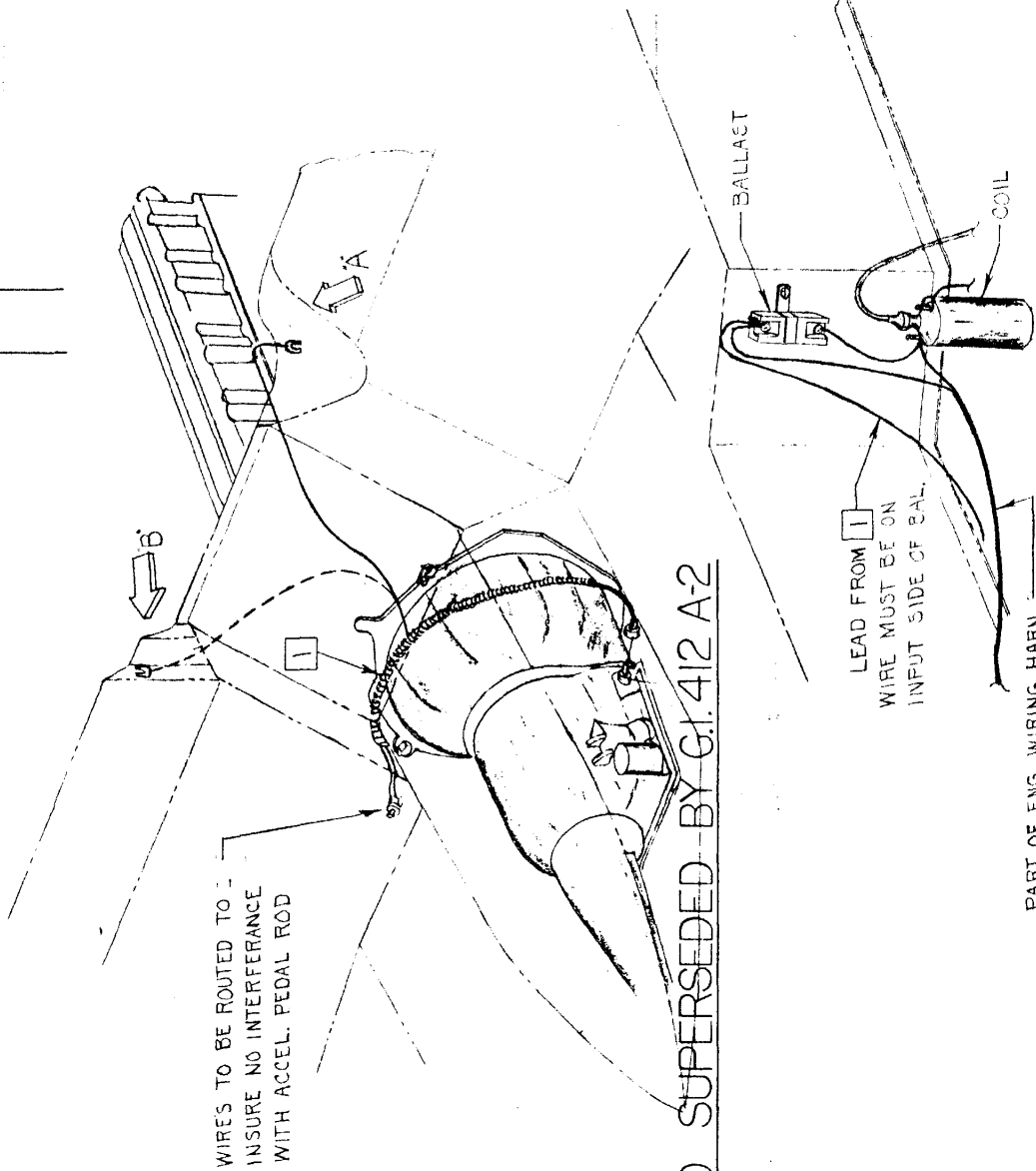
DWN. DEKKER  
CHK. *HRS*  
APPVD.

SHEET NO. 412 A-1

1. 703722 SWITCH & INSULATOR ASSEM. - KICKDOWN

DATE CHANGES

7-27-72 703560 REMOVED



CANCELLED SUPERSEDED BY G1.412 A-2

CHECKER MOTORS CORP. KALAMAZOO, MICH.

GRAPHIC ILLUSTRATION

TRANSMISSION CONTROLS - KICK DOWN SW. WIRING

MODEL:	B-12	DATE	2-26-73
B-11	B-12E	B-12W6	
B-11E	B-12W		

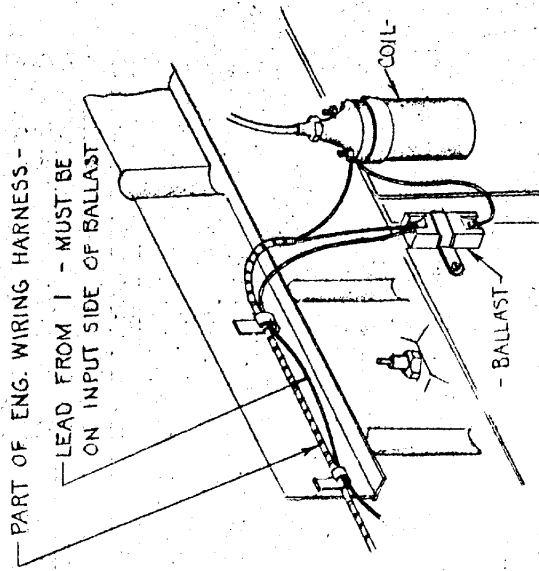
DWN. DEKKEK  
CHK.

SHEET NO. 412 A-2

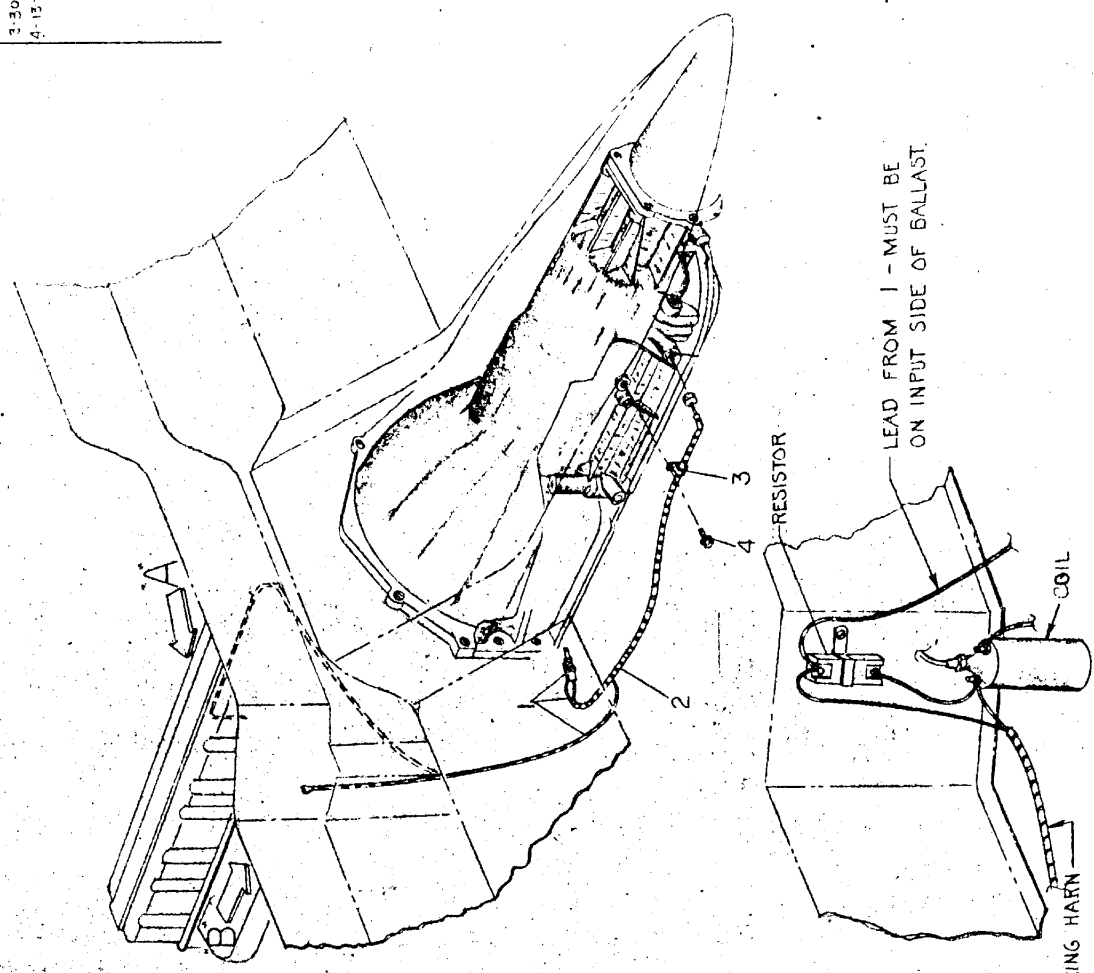
APPVD. SUPERSEDES GI 412 A-1 PER MEMO # 326

DATE	CHANGES
3-30-73	80361 + 274105 Added
4-13-73	626858 Wh. 20364

- 1. 705198 SWITCH + INSULATOR ASM. - KICKDOWN
- 2. 705197 SWITCH ASM. - KICKDOWN
- 3. 704804 INSULATOR - WIRE PROTECTOR
- 4. 626858 CLIP - NYLON 3/8 WIDE
- 5. 274105 SCREW #10-24 x 3/8 HEX.



PART OF ENG. WIRING HARNESS - 6 CYL ONLY



PART OF ENG. WIRING HARNESS - 8 CYL ONLY