

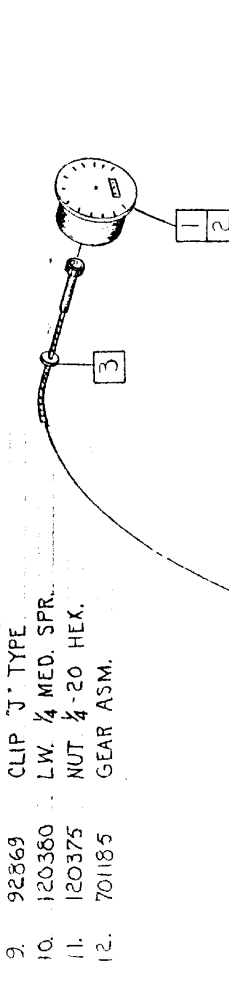
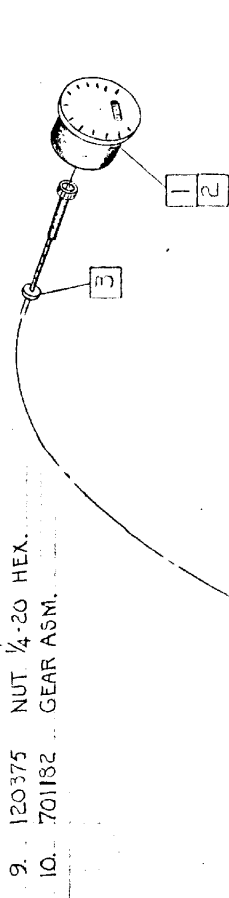
EFFECTIVE OCT 1, 1970

CHECKER MOTORS CORP. KALAMAZOO, MICH.

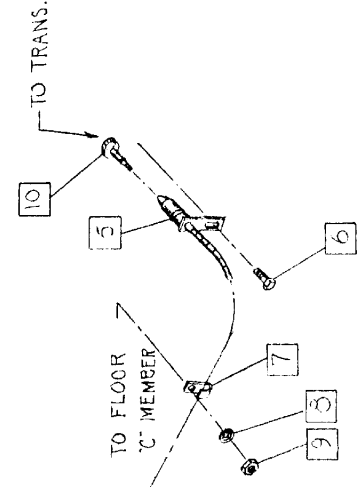
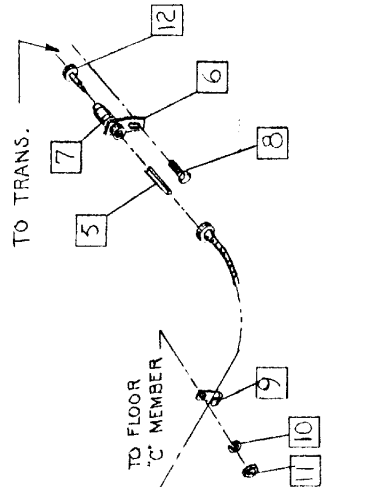
MODEL:	A-12	DATE	4-12-71
A-11	A-12E	GRAPHIC ILLUSTRATION	
A-11E	A-12W	SPEEDOMETER CABLES	
	A-12W6		
		CHK. <i>AP</i> 4-21-71	
		DWN. DEKKER	
		SHEET NO. 340 A-1	
		APPVD.	

Part No.	Description	QTY	Notes
1. 97184	SPEEDOMETER ASM. - KILO.		
2. 97185	SPEEDOMETER ASM.		
3. 702361	GROMMET - SPEEDO. CABLE DASH		
4. 705157	CABLE ASM. - SPEEDO.		
5. 702238	O' RING		
6. 120854	BOLT 1/4-20 x 3/8 HEX.		
7. 92869	CLIP J-TYPE		
8. 120380	LW. 1/4 MED. SPR.		
9. 120375	NUT 1/4-20 HEX.		
10. 701182	GEAR ASM.		

Part No.	Description	QTY	Notes
1. 97184	SPEEDOMETER ASM. - KILO.		
2. 97185	SPEEDOMETER ASM.		
3. 702361	GROMMET - SPEEDO. CABLE DASH.		
4. 703215	CABLE ASM. - SPEEDO. - TAXI		
5. 702568	KEY - SPEEDO. DRIVE GEAR		
6. 703216	ADAPTER ASM.		
7. 702238	O' RING		
8. 120854	BOLT 1/4-20 x 3/8 HEX.		
9. 92869	CLIP J-TYPE		
10. 120380	LW. 1/4 MED. SPR.		
11. 120375	NUT 1/4-20 HEX.		
12. 701185	GEAR ASM.		



CANCELLED SUPERSEDED BY G.I. 340 A-2



TAXI

PASS. CAR

DATE	CHANGES
1-29-73	702361 Wks 94465

CHECKER MOTORS CORP. KALAMAZOO, MICH.

MODEL: B-11 E-11E B-12 W	B-12 E-12E B-12 W	DATE 2-14-73	GRAPHIC ILLUSTRATION SPEEDOMETER CABLE ROUTING	DWN. DESKTOP CHK. G. 2-14-73	SHEET NO. 340 A-2
<p>1. 705150 CABLE ASM. - SPEEDOMETER 2. 706345 GEAR - SPEEDO. DRIVEN (45 T) LT. BLUE (S-12WS) 3. 706396 GEAR - SPEEDO. DRIVEN (45 T) PURPLE (B-11, B-11E, B-12, E-12E, B-VIEW) 4. 705224 SLEEVE & SEAL ASM. - SPEEDO. DR. GEAR 5. 706347 SEAL - O' RING 6. 706346 RETAINER - SPEEDO. SLEEVE 7. 273807 SCREW - $\frac{3}{16}$ x $1\frac{1}{2}$ HEX 8. 702361 GROMMET - SPEEDO. CABLE 9. 705284 ADAPTER ASM. - DUAL DR (B-11, B-11E) 10. 92369 CLIP 'J' TYPE 11. 120380 LW. $\frac{1}{4}$ MED SPRING 12. 120375 NUT - $\frac{1}{4}$ - 20 HEX. 13. 115269 CLIP $\frac{3}{16}$ SINGLE</p>			APPRVD. SUPERSEDES G1 340 A-1 PER MEMO # 326	DATE 4-12-73	CHANGES 115269 Added

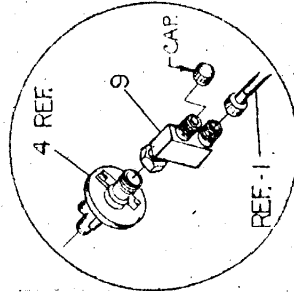
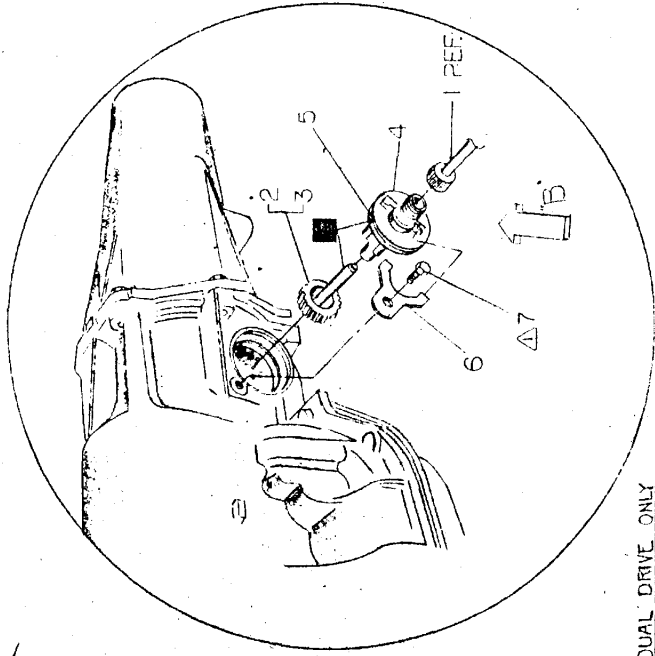
▲ 10-15 LBS. FT. TORQUE
 ■ APPLY M1-103 TRANS. FLUID TO GEAR SHAFT AND O' RING SEAL BEFORE ASSEMBLY TO TRANSMISSION.

13 SEE 192 A-1; 2, 3 FOR MTG.

TO SPEEDOMETER. SEE G1 460

TO FLOOR CROSS-MEMBER BOLT

VIEW IN DIRECTION OF ARROW 'A'



VIEW IN DIRECTION OF ARROW 'B' - FOR DUAL DRIVE ONLY