

CHECKER MOTORS CORP. KALAMAZOO, MICH.

MODEL:

B-12W

DATE

4-30-72

GRAPHIC ILLUSTRATION

JACK - BUMPER - INSTALLATION IN WAGON

DWN. CHK.

APPVD.

SHEET NO.

235 A-1

NOTE: BEFORE TIGHTENING WING NUT, PUT THE WRENCH AND COLUMN + BODY ASM IN POSITION SHOWN. THEN WEDGE HOOK ASM. IN POSITION AND TIGHTEN WING NUT.

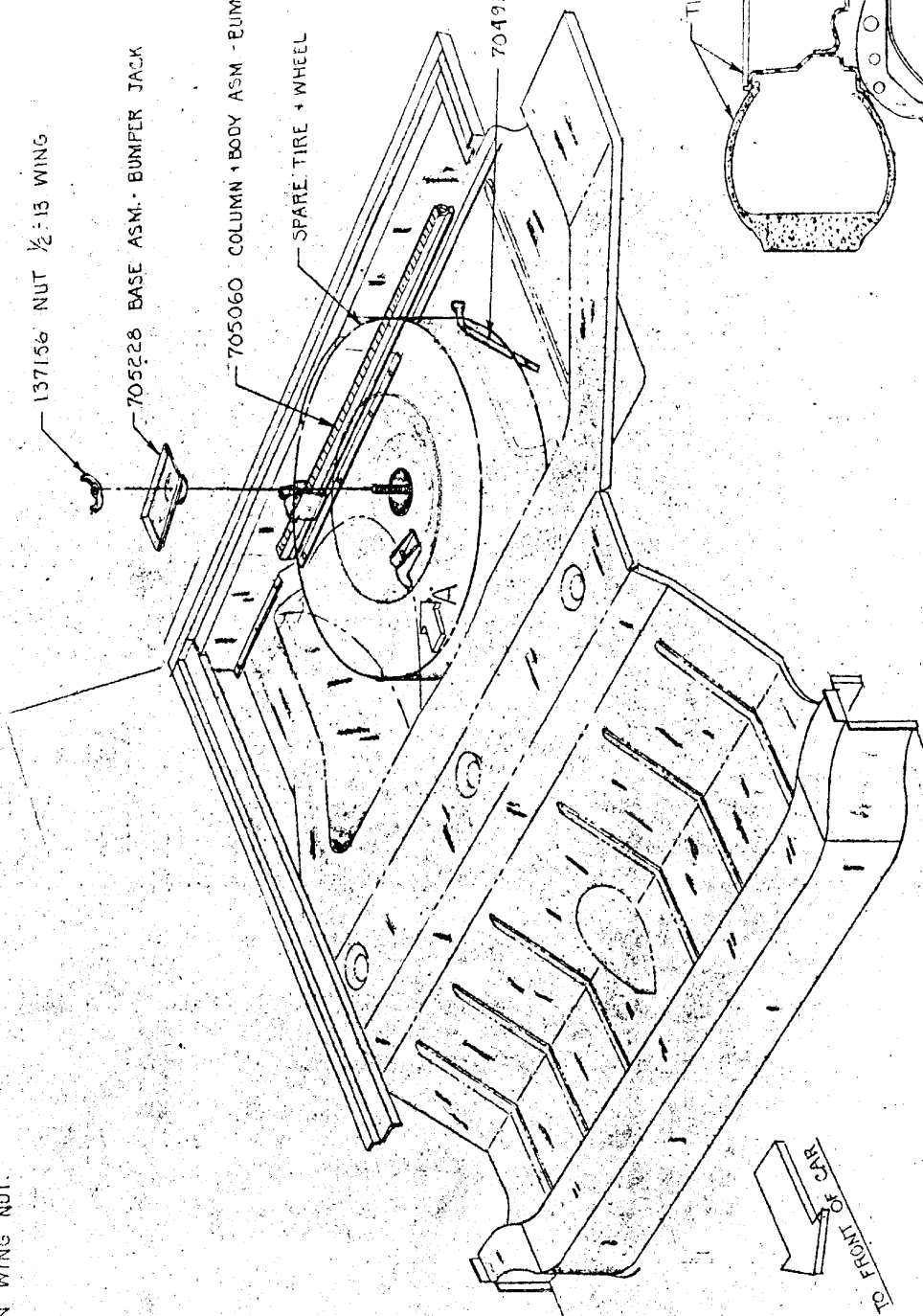
137156 NUT 1/2-13 WING

705228 BASE ASM - BUMPER JACK

705060 COLUMN + BODY ASM - BUMPER JACK

SPARE TIRE + WHEEL

704922 WRENCH - WHEEL LUG



TIRE + WHEEL

705062 HOOK ASM - BUMPER JACK

VIEW IN DIRECTION OF ARROW 'A'

DATE

1-9-72

CHANGES

705228 WAS 705061