

CHECKER MOTORS CORP. KALAMAZOO, MICH.

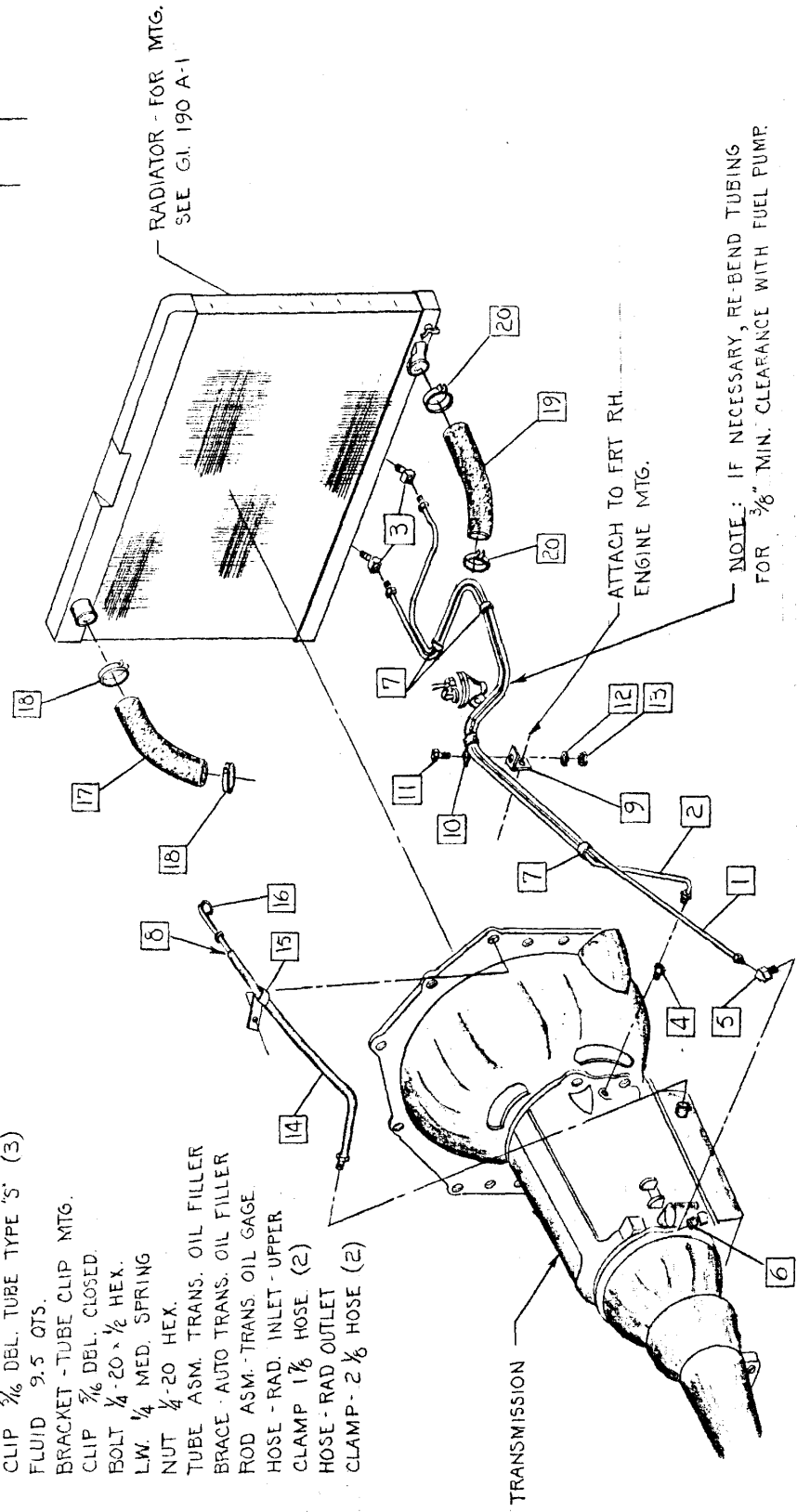
EFFECTIVE OCT. 1, 1970

MODEL: B-12 B-11 B-11E	DATE 3-9-71	GRAPHIC ILLUSTRATION COOLING LINES - TRANS. 6 CYL.	DWN. DEKKE CHK. 1004-2-71	SHEET NO. 110 A-1
------------------------------	----------------	---	------------------------------	-------------------

DATE	CHANGES
7-12-71	CLEARANCE NOTE ADDED
5-9-72	9:156 TURBO ALUMINUM

APPVD.

1. 701937 TUBE ASM. - COOLER TO TRANS 6 CYL.
2. 701938 TUBE ASM. - TRANS. TO COOLER 6 CYL
3. 116341 ELBOW - INV. FL. TUBE - 1/8 MPT (2)
4. 137406 CONNECTOR 3/16 INV. FL. TUBE 1/8 MFT
5. 137422 ELBOW 3/16 INV. FL. TUBE 1/8 MFT.
6. 443998 ADAPTER - AUTO PIPE 1/8 TO 1/2
7. 702612 CLIP 3/16 DEL. TUBE TYPE 'S' (3)
8. MI-103 FLUID 9.5 QTS.
9. 702610 BRACKET - TUBE CLIP MTG.
10. 702611 CLIP 3/16 DEL. CLOSED
11. 120706 BOLT 1/4 - 20 x 1/2 HEX.
12. 120380 LW. 1/4 MED. SPRING
13. 120375 NUT 1/4 - 20 HEX.
14. 93010 TUBE ASM. TRANS. OIL FILLER
15. 93156 BRACE - AUTO TRANS. OIL FILLER
16. 93012 ROD ASM. - TRANS. OIL GAGE
17. 702115 HOSE - RAD. INLET - UPPER
18. 454370 CLAMP 1 1/8 HOSE (2)
19. 702116 HOSE - RAD. OUTLET
20. 454373 CLAMP - 2 1/8 HOSE (2)



CANCELLED SUPERSEDED BY GI. 110 A-9

CHECKER MOTORS CORP. KALAMAZOO, MICH.

EFFECTIVE OCT. 1, 1970

MODEL: B-12

DATE 3-9-71

B-11

B-12WB

GRAPHIC ILLUSTRATION

DWN. DENKER

SHEET NO. 110 A-2

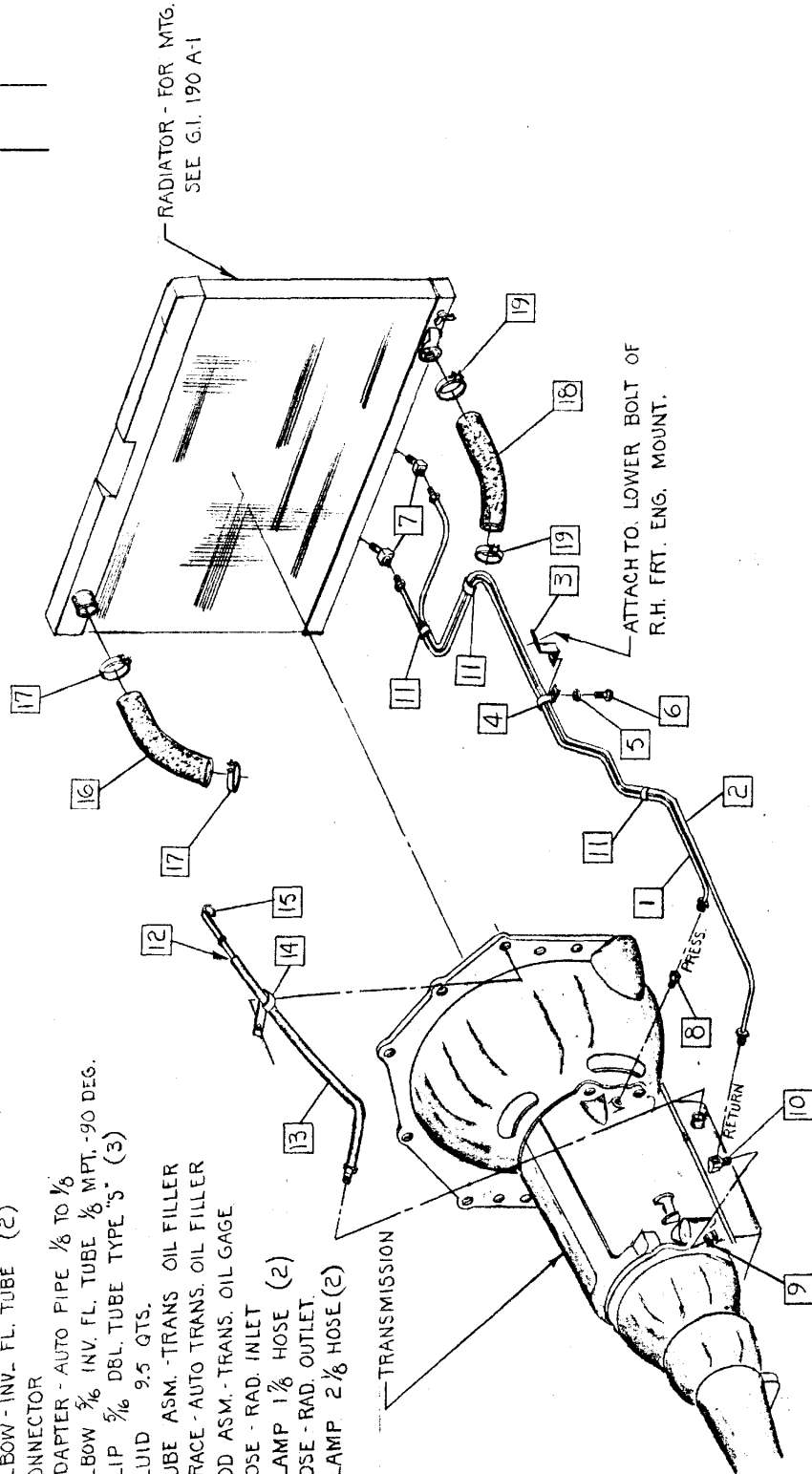
B-11E

B-12W

COOLING LINES - TRANS. 8 CYL.

APPVD.

1. TUBE ASM. - TRANS. TO COOLER - 8 CYL.
2. TUBE ASM. - TRANS. OIL RETURN
3. BRACKET ASM. - TUBE CLAMP MTS.
4. CLIP $\frac{3}{16}$ DBL. CLOSED
5. LW. $\frac{1}{4}$ MED. SPRING
6. BOLT $\frac{1}{4}$ -20 x $\frac{1}{2}$ HEX.
7. ELBOW - INV. FL. TUBE (2)
8. CONNECTOR
9. ADAPTER - AUTO PIPE $\frac{1}{8}$ TO $\frac{1}{16}$
10. ELBOW $\frac{3}{16}$ INV. FL. TUBE $\frac{1}{8}$ MPT. -90 DEG.
11. CLIP $\frac{3}{16}$ DBL. TUBE TYPE "S" (3)
12. FLUID 9.5 QTS.
13. TUBE ASM. - TRANS OIL FILLER
14. BRACE - AUTO TRANS. OIL FILLER
15. ROD ASM. - TRANS. OIL GAGE
16. HOSE - RAD. INLET
17. CLAMP $\frac{1}{8}$ HOSE (2)
18. HOSE - RAD. OUTLET
19. CLAMP $\frac{1}{8}$ HOSE (2)



DATE	CHANGES
5-9-72	98156 TURNED AROUND.

CANCELLED SUPERSEDED BY G.I. 110 A-10

CHECKER MOTORS CORP. KALAMAZOO, MICH.

EFFECTIVE AUG. 1, 1971

DWN. DEKKER
CHK.

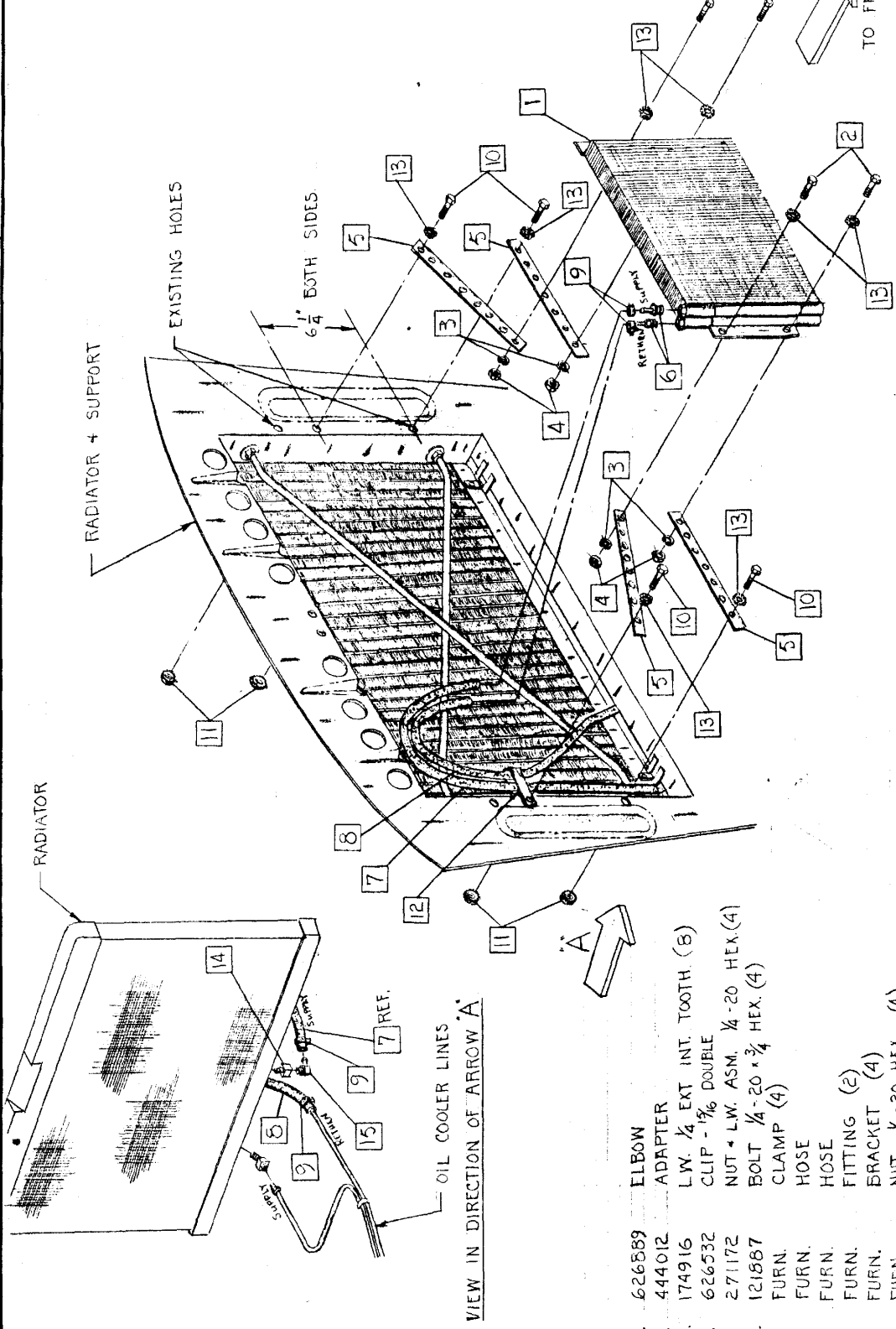
SHEET NO. 110 A-3

GRAPHIC ILLUSTRATION
COOLING LINES - TRANS. AUX. DIESEL

MODEL: B-12 E
DATE: 8-5-71

APPVD.

DATE	CHANGES
2-22-72	626456 REMOVE
~	174916 L.W. (8) ADDED
3-22-72	CANCELED



- 15. 626889 ELBOW
- 14. 444012 ADAPTER
- 13. 174916 L.W. 1/4 EXT INT. TOOTH. (8)
- 12. 626532 CLIP - 1/8" DOUBLE
- 11. 271172 NUT - L.W. ASM. 1/4 - 20 HEX. (4)
- 10. 121887 BOLT 1/4 - 20 x 3/4 HEX. (4)
- 9. FURN. CLAMP (4)
- 8. FURN. HOSE
- 7. FURN. HOSE
- 6. FURN. FITTING (2)
- 5. FURN. BRACKET (4)
- 4. FURN. NUT 1/4 - 20 HEX. (4)
- 3. FURN. L.W. 1/4 MED. SPRING (4)
- 2. FURN. BOLT 1/4 - 20 x 3/4 HEX. (4)
- 1. 705006 OIL COOLER KIT - TRANS. (KARMAZIN)

CANCELED - DIESEL OPTION DISCONTINUED

EFFECTIVE OCT 1, 1971

CHECKER MOTORS CORP. KALAMAZOO, MICH.

SHEET NO. 110 A-4

DWN. DENEK.
CHK.

GRAPHIC ILLUSTRATION

DATE
10-14-71

COOLING LINES - TRANS. AUX. - (KARMAZIN # 206-201)

APPVD.

MODEL:

A-12W8

1. 705041 OIL COOLER KIT - TRANS. (KARMAZIN # 206-201)

2. BOLT 1/4 - 20 x 3/4 (4)

3. FURN. L.W. 1/4 MED. SPR. (4)

4. FURN. NUT 1/4 - 20 HEX. (4)

5. FURN. UPPER STRAPS AS FURN. (2)

6. FURN. LOWER STRAPS - CUT AS REQ'D (2)

7. FURN. HOSE - CUT TO 12 1/2" LG.

8. FURN. HOSE - CUT TO 12 1/2" LG. (2)

9. FURN. CLAMP (4)

10. 702376 GROMMET 3/4 x 1 1/8 (2)

11. 444C12 ADAPTER

12. 626589 ELBOW

DATE	CHANGES

RADIATOR SUPPORT

AIR COND. CONDENSER

1" DIA DRILL (2) HOLES

EXISTING PARTS



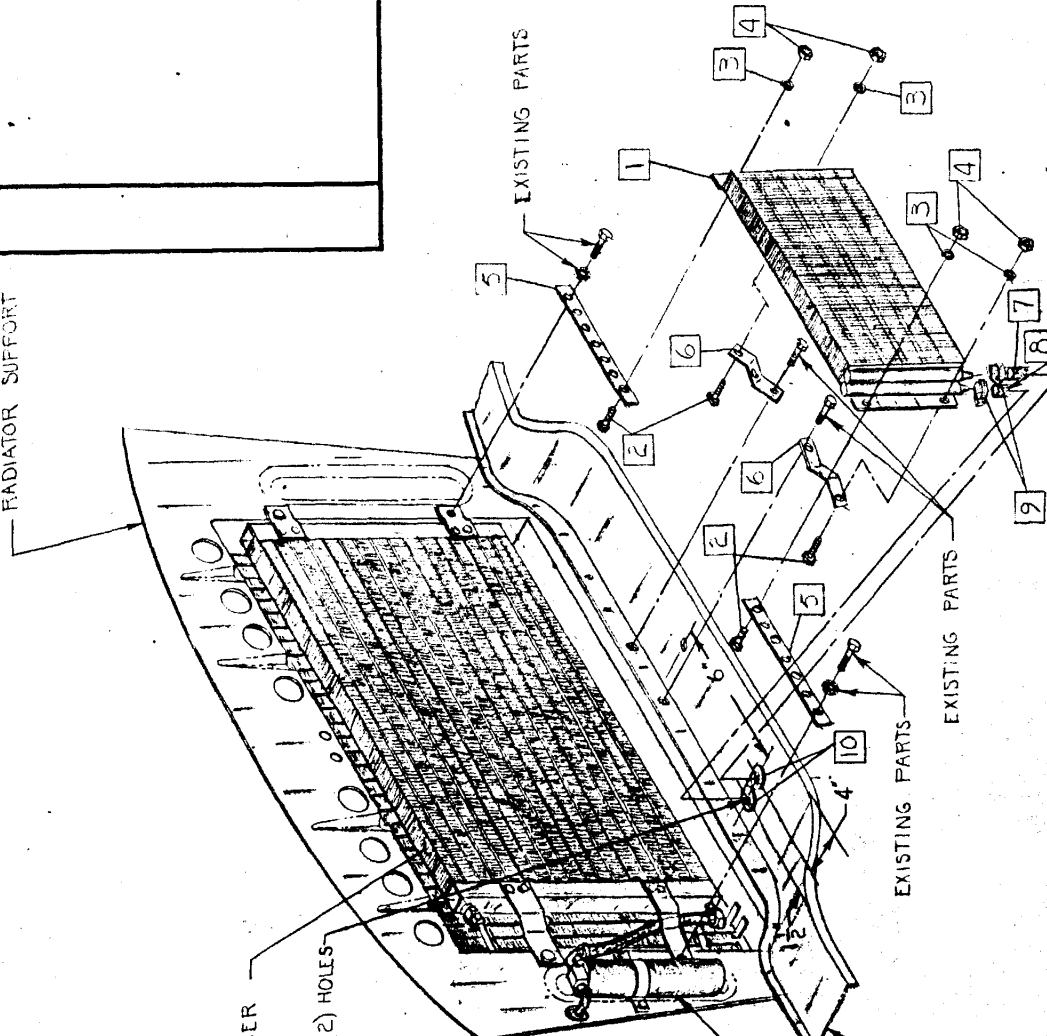
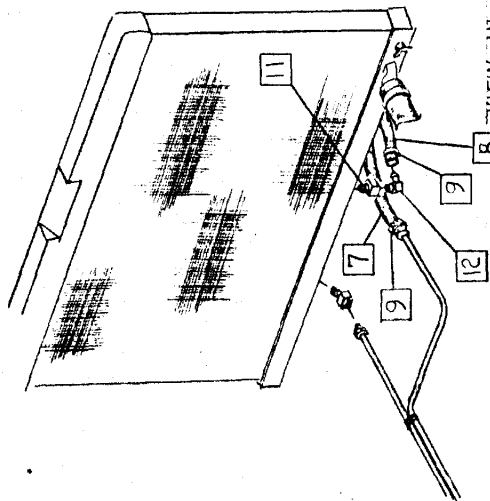
REC. DRIER ASM

SPLASH PANEL ASM.

EXISTING PARTS

EXISTING PARTS

VIEW IN DIRECTION OF ARROW A



CHECKER MOTORS CORP. KALAMAZOO, MICH.

SHEET NO. 110 A-5

DWN. CHECK
CHK.

GRAPHIC ILLUSTRATION

DATE
3-22-72

MODEL:
A-11
A-11E
A-12
A-12E
A-12W

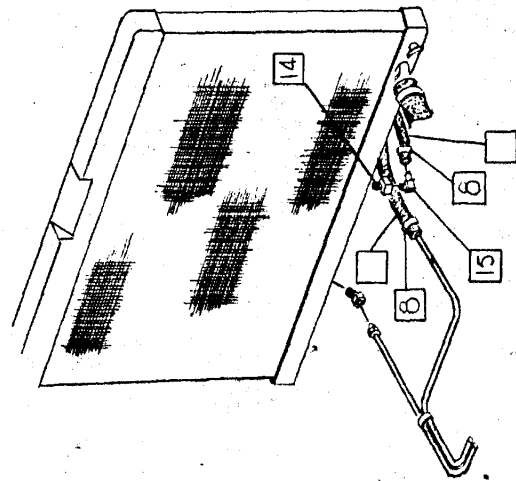
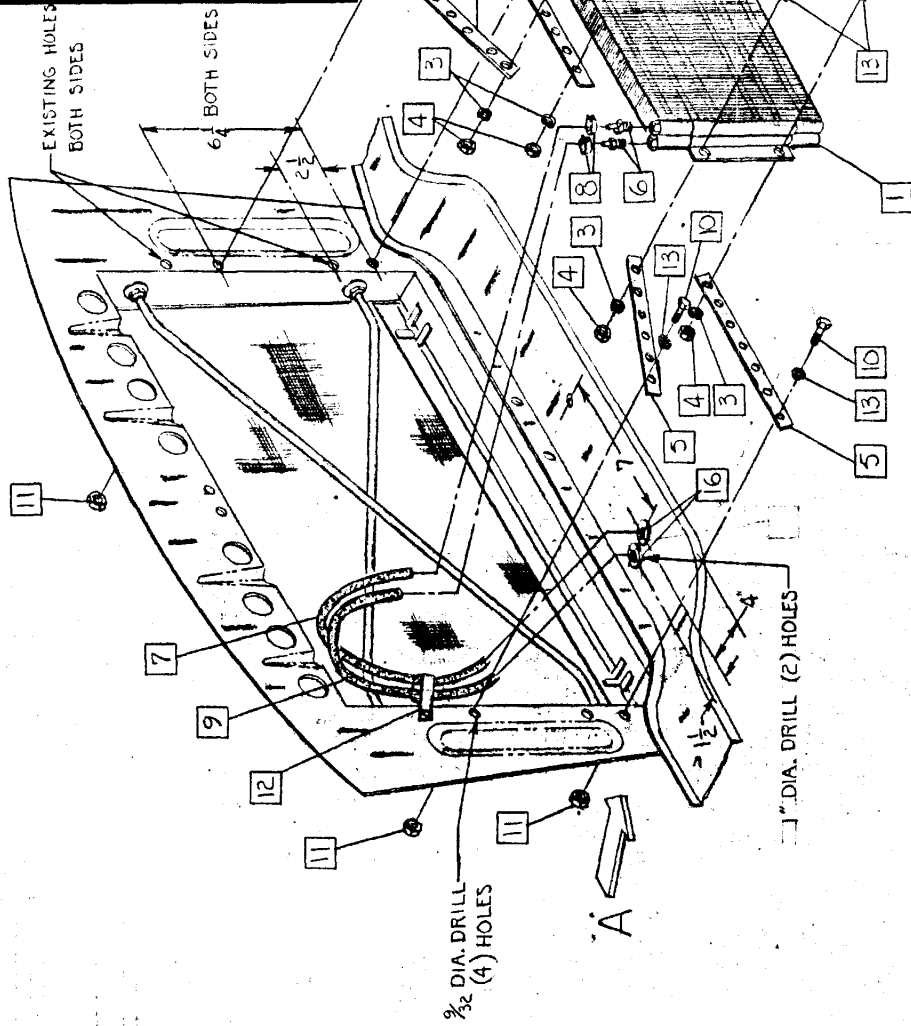
COOLING LINES - TRANS. AUX. (KARMAZIN. 210-101)

APPVD.

DATE	CHANGES

1. 705006 OIL COOLER KIT - TRANS. (KARMAZIN *210-101)

- 2. FURN. BOLT 1/4-20 x 3/4 HEX. (4)
- 3. FURN. L.W. 1/4 MED. SPRING (4)
- 4. FURN. NUT 1/4-20 HEX. (4)
- 5. FURN. BRACKET (4)
- 6. FURN. FITTING (2)
- 7. FURN. HOSE (16")
- 8. FURN. CLAMP (4)
- 9. FURN. HOSE (14")
- 10. 121867 BOLT 1/4-20 x 3/4 HEX. (4)
- 11. 271172 NUT + LW ASM. - 1/4-20 HEX. (4)
- 12. 626532 CLIP 1/16 DOUBLE
- 13. 174916 L.W. 1/4 INT. EXT. TOOTH (8)
- 14. 444012 ADAPTER
- 15. 626689 ELBOW
- 16. 702376 GROMMET 3/4 x 1 1/16 (2)



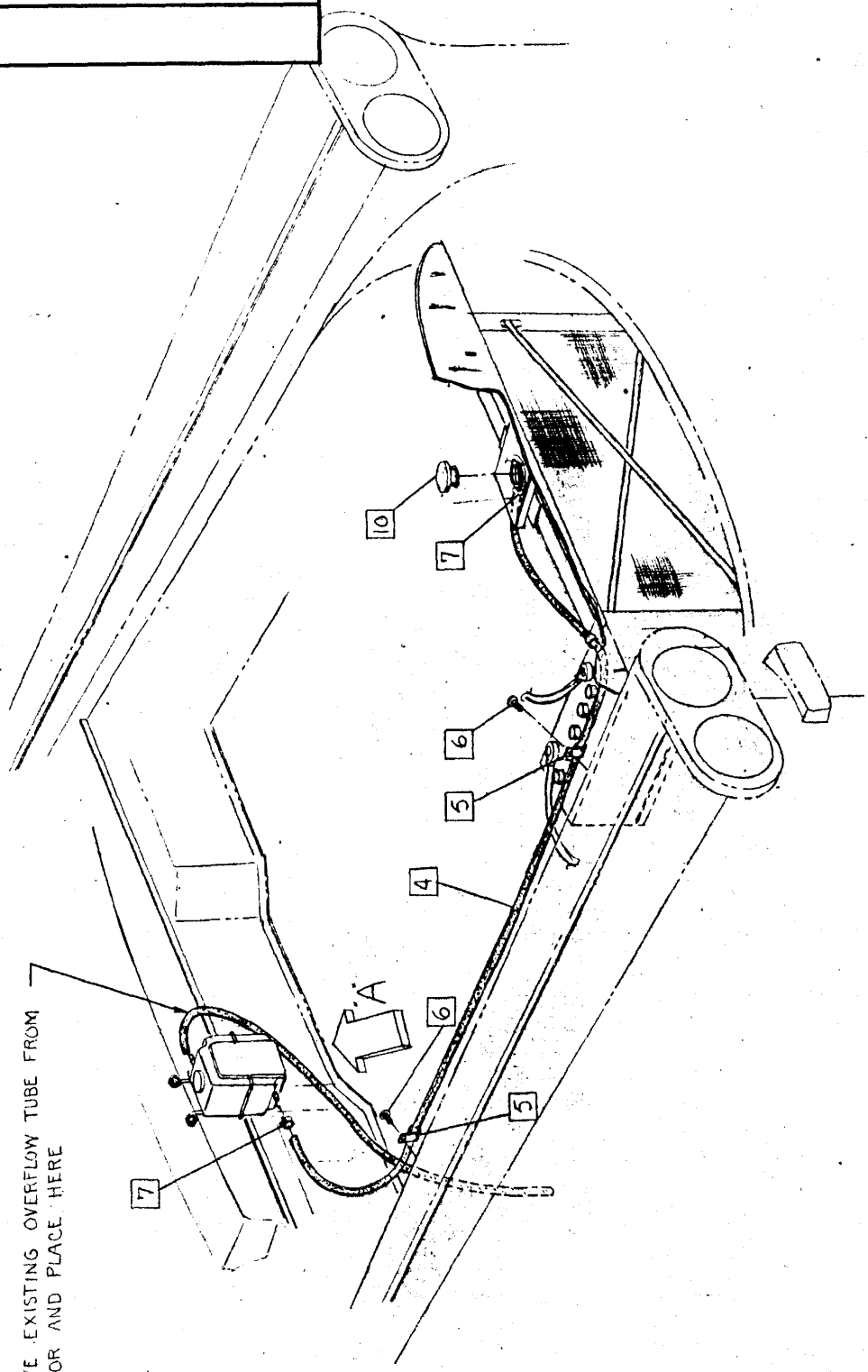
EFFECTIVE SEPT. 27, 1972

CHECKER MOTORS CORP. KALAMAZOO, MICH.

MODEL: B-11 B-11E B-11W	DATE 9-27-72	GRAPHIC ILLUSTRATION	SHEET NO. 110 A-6
B-12 B-12E B-12W		COOLING SYSTEM - RADIATOR OVERFLOW - FRT. MTD. BATTERY	
DWN. DEKKER CHK.		APPVD.	

DATE	CHANGES

REMOVE EXISTING OVERFLOW TUBE FROM RADIATOR AND PLACE HERE



CHECKER MOTORS CORP. KALAMAZOO, MICH.

EFFECTIVE SEPT 27, 1972

MODEL:	B-12	DATE
B-11	B-12C	9-27-72
B-11E	B-12W	

GRAPHIC ILLUSTRATION

COOLING SYSTEM - RADIATOR OVERFLOW - FRI. MTC. BATTERY

DWN. DEWEER
CHK.

SHEET NO. 110 A-7

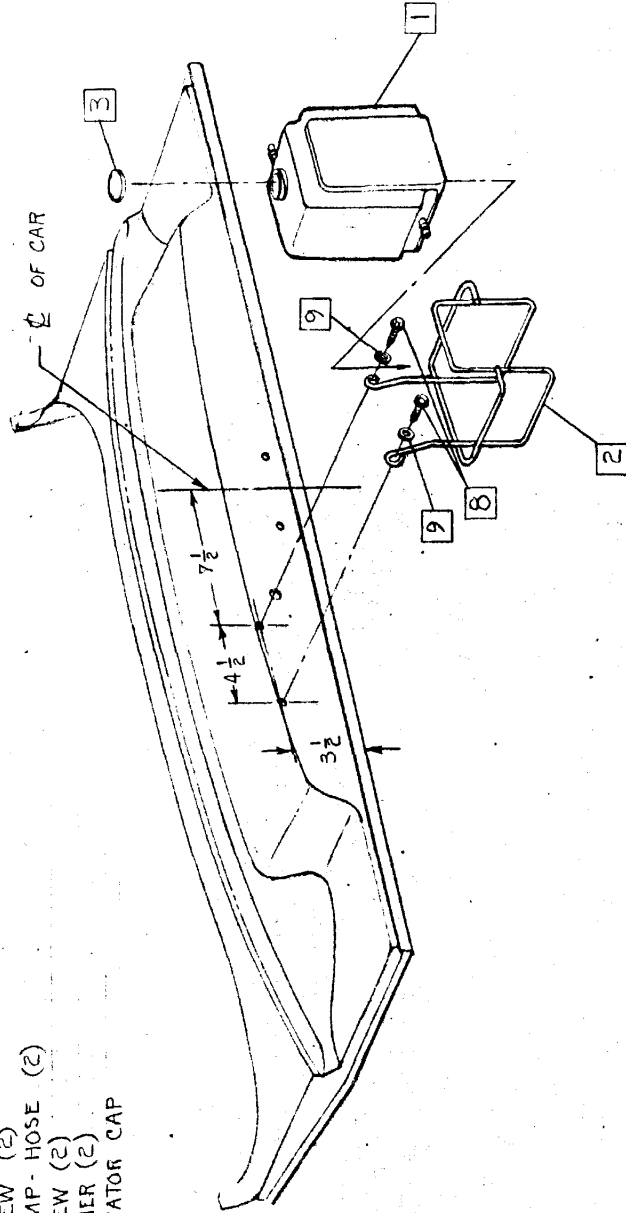
APPVD.

ALL PART NO'S LISTED ARE PART OF KIT NO.

705183 COOLANT RECOVERY KIT.

- 1. 222-1 PLASTIC BOTTLE
- 2. 222-2 WIRE HANGER
- 3. 222-3 BOTTLE CAP
- 4. 222-5 PLASTIC TUBING (55" LG.)
- 5. ——— HARDWARE PACKAGE
- 6. CLIP (2)
- 7. SCREW (2)
- 8. CLAMP - HOSE (2)
- 9. SCREW (2)
- 10. WASHER (2)
- 11. 222-8 RADIATOR CAP

DATE	CHANGES



VIEW IN DIRECTION OF ARROW 'A'

CHECKER MOTORS CORP. KALAMAZOO, MICH.

EFFECTIVE SEPT. 27, 1972

MODEL:

B-11
B-11E

DATE

10-19-72

GRAPHIC ILLUSTRATION

COOLING SYSTEM - RADIATOR OVERFLOW - REAR MID BATTERY

DWN. DRAFT #
CHK.

SHEET NO. 110 A-8

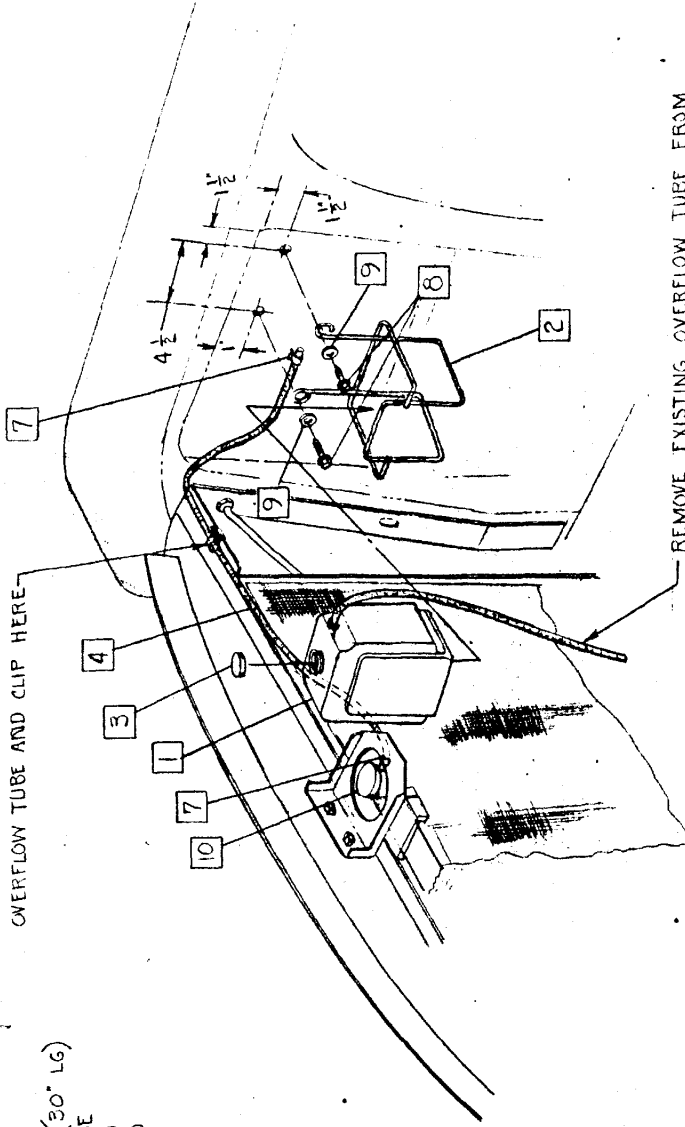
APPVD.

ALL PART NOS LISTED ARE PART OF KIT NO.

705183 COOLANT RECOVERY KIT

- 1. 222-1 PLASTIC BOTTLE
- 2. 222-2 WIRE HANGER
- 3. 222-3 BOTTLE CAP
- 4. 222-5 PLASTIC TUBING (30" LG)
- 5. _____ HARDWARE PACKAGE
- 6. _____ CLIP (2) NOT USED
- 7. _____ SCREW (2) NOT USED
- 8. _____ CLAMP HOSE (2)
- 9. _____ SCREW (2)
- 10. 222-8 WASHER (2)
- 10. 222-8 RADIATOR CAP

REMOVE EXISTING CLIP HOLDING
OVERFLOW TUBE AND CLIP HERE



REMOVE EXISTING OVERFLOW TUBE FROM
RADIATOR AND PLACE HERE

DATE	CHANGES

CHECKER MOTORS CORP. KALAMAZOO, MICH.

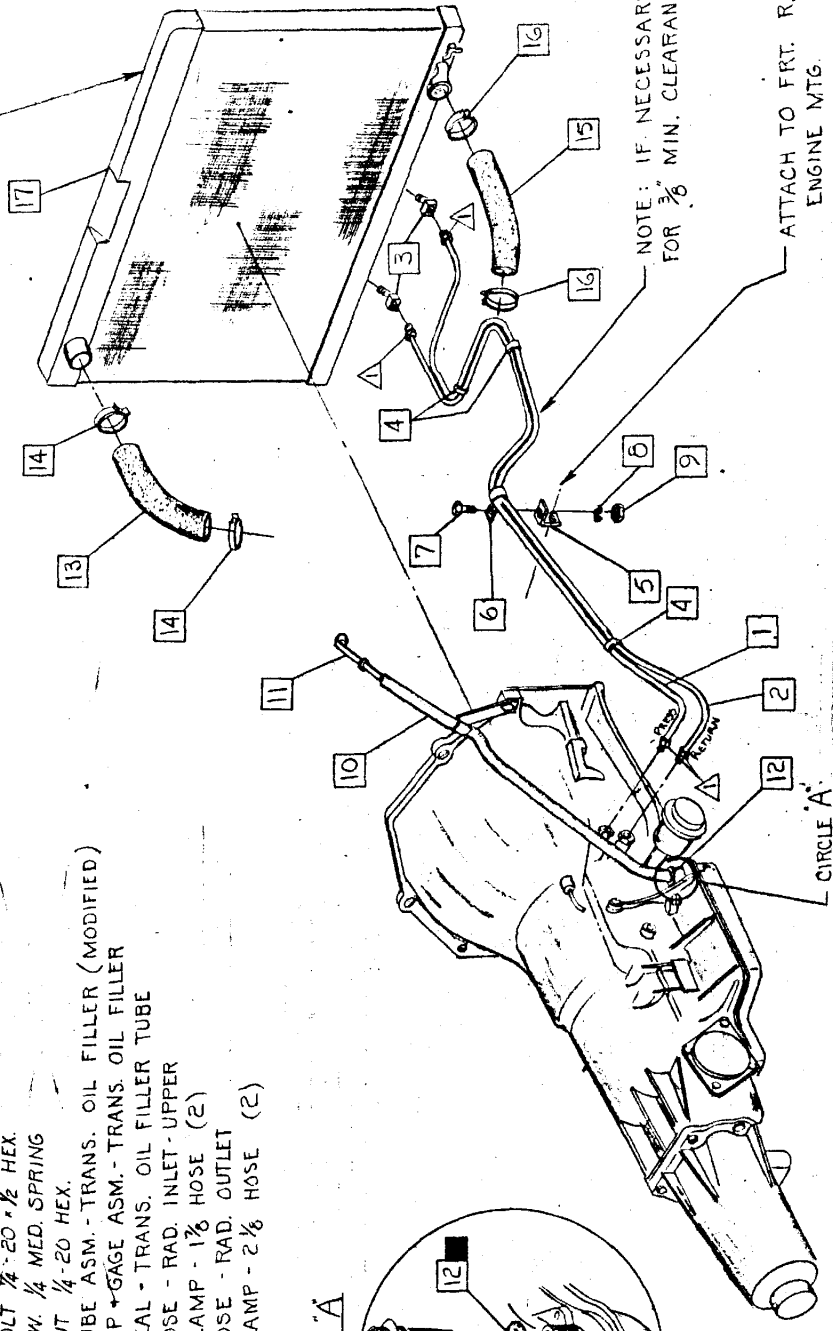
EFFECTIVE MAR. 1, 1975

MODEL:	B-12	DATE	11-28-72
B-11	B-12E	GRAPHIC ILLUSTRATION	
B-11E	B-12W	COOLING LINES - TRANS. 6 CYL. HYDRAMATIC	
DWN. DISSEL	CHK. 827-91-73	SHEET NO. - 110 A-9	
APPVD.	SUPERSEDES G1 110 A-1 PER MEMO 526	CHANGES	

- 1. TUBE ASM. - TRANS. TO COOLER
- 2. TUBE ASM. - TRANS. TO COOLER
- 3. ELBOW - INV. FL. TUBE - 1/8 MPT (2)
- 4. CLIP 3/16 DBL TUBE TYPE "S" (3)
- 5. BRACKET - TUBE CLAMP MTG.
- 6. CLIP 3/16 DBL. CLOSED
- 7. BOLT 7/8 - 20 x 1/2 HEX.
- 8. L.W. 1/4 MED. SPRING
- 9. NUT 1/4 - 20 HEX.
- 10. TUBE ASM. - TRANS. OIL FILLER (MODIFIED)
- 11. CAP + GAGE ASM. - TRANS OIL FILLER
- 12. SEAL - TRANS. OIL FILLER TUBE
- 13. HOSE - RAD. INLET - UPPER
- 14. CLAMP - 1 1/2 HOSE (2)
- 15. HOSE - RAD. OUTLET
- 16. CLAMP - 2 1/2 HOSE (2)

■ APPLY M1-103 TRANS. FLUID TO SEAL PRIOR TO ASSEMBLY.

RADIATOR FOR MTG. SEE G1. 190 A-1



NOTE: IF NECESSARY, RE-BEND TUBING FOR 3/8" MIN. CLEARANCE WITH FUEL PUMP

ATTACH TO FRT. RH. ENGINE MTG.

- NOTE:
1. ALL LINES & CONNECTIONS MUST BE FREE OF LEAKS UNDER OPERATING CONDITIONS.
 2. LINES MUST NOT CONTACT CHASSIS COMPONENTS.

▲ 15 - 25 LBS. FT. TORQUE

CHECKER MOTORS CORP. KALAMAZOO, MICH.

EFFECTIVE MAR. 1, 1973

MODEL:
B-11
B-12E
B-12W

DATE
12-14-72

GRAPHIC ILLUSTRATION

COOLING LINES - TRANS. 8 CYL. HYDRAMATIC.

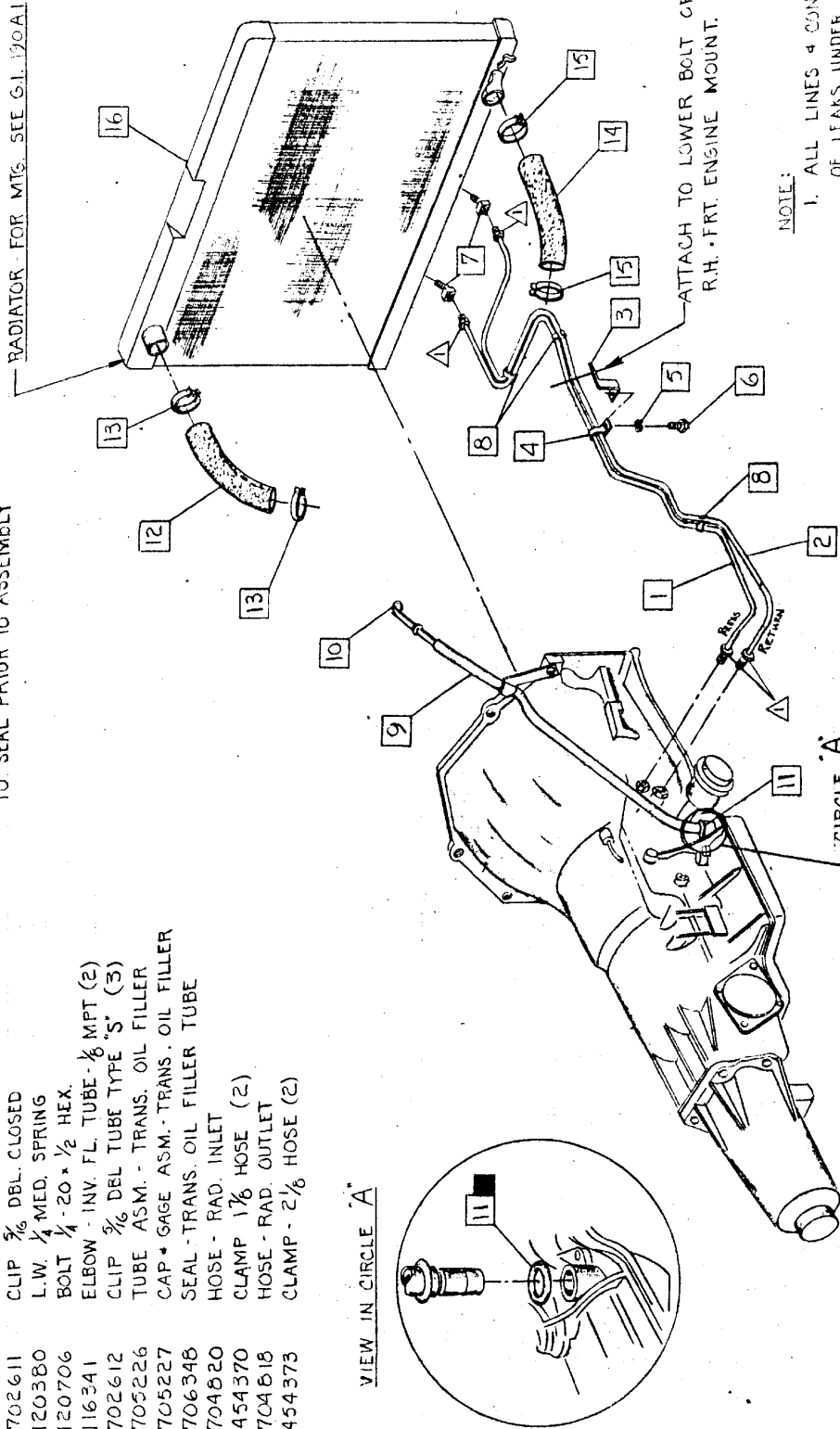
DWN. DEKKER
CHK. 8-29-73

SHEET NO. 110 A-10

APPVD. SUPERSEDES G.I. 110A-2 PER MEMO 7324

1. 705239 TUBE ASM. - TRANS. TO COOLER
2. 705240 TUBE ASM. - COOLER TO TRANS
3. 701665 BRACKET ASM. - TUBE CLAMP MTS.
4. 702611 CLIP 3/8" DBL. CLOSED
5. 120380 L.W. 1/4" MED. SPRING
6. 120706 BOLT 1/4" - 20 x 1/2" HEX.
7. 116341 ELBOW - INV. FL. TUBE - 1/8" MPT (2)
8. 702612 CLIP 3/8" DEL TUBE TYPE "S" (3)
9. 705226 TUBE ASM. - TRANS. OIL FILLER
10. 705227 CAP - GAGE ASM. - TRANS. OIL FILLER
11. 706346 SEAL - TRANS. OIL FILLER TUBE
12. 704820 HOSE - RAD. INLET
13. 454370 CLAMP 1 1/8" HOSE (2)
14. 704818 HOSE - RAD. OUTLET
15. 454373 CLAMP - 2 1/8" HOSE (2)

APPLY MI-103 TRANS. FLUID TO SEAL PRIOR TO ASSEMBLY



NOTE:

1. ALL LINES & CONNECTIONS MUST BE FREE OF LEAKS UNDER OPERATING CONDITIONS.
2. LINES MUST NOT CONTACT CHASSIS COMPONENTS.

▲ 15 - 25 FT. LBS. TORQUE