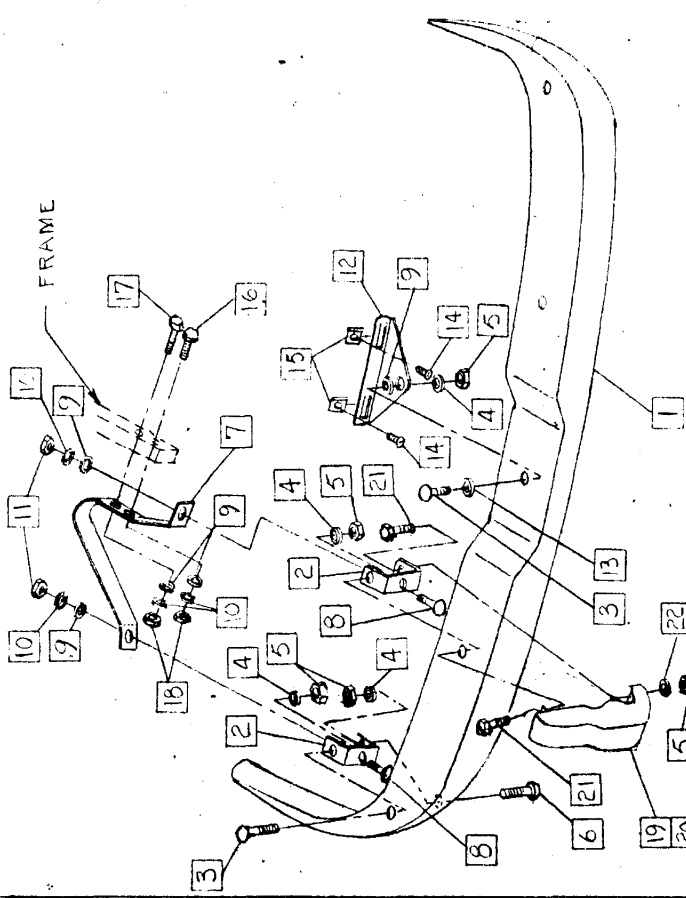
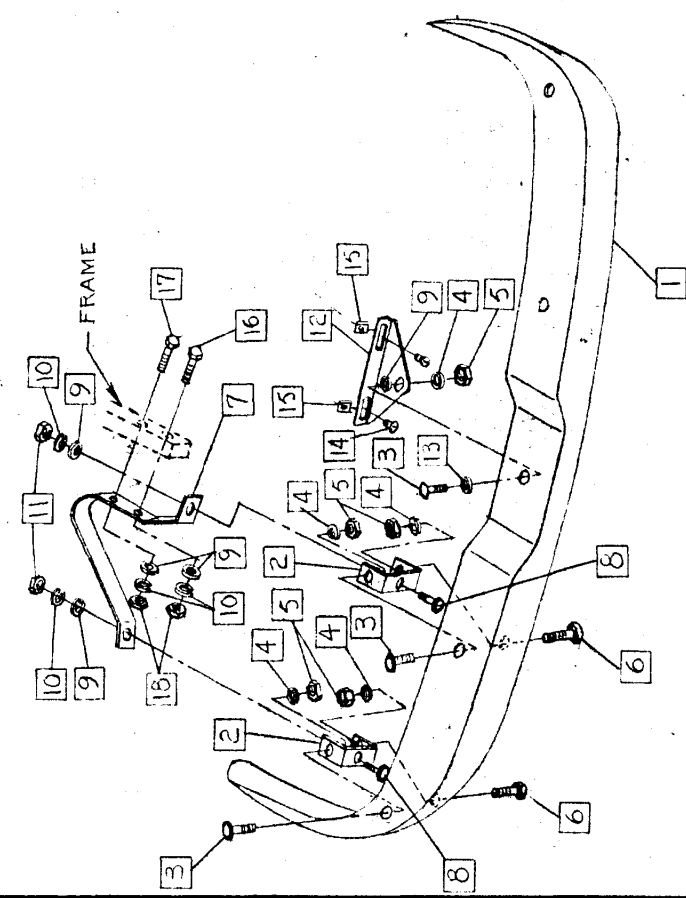


CHECKER MOTORS CORP. KALAMAZOO, MICH.

EFFECTIVE OCT. 1, 1970

MODEL:	B-12 WB	DATE	6-6-69
	DWN. DESKER	CHK. SKB	APPVD.
GRAPHIC ILLUSTRATION		SHEET NO. 80 A-1	
BUMPER - FRONT			

1.	94752	BAR - BUMPER FACE	14.	189129	SCREW 1/4 - 20 x 3/8 TR. HD. (2)	CHANGES
2.	98303	BRACKET (4)	15.	626383	NUT 1/4 - 20 TYPE U TINN. (C)	2-22-71 159348 WAS 191695
3.	121607	BOLT 3/8 - 16 x 1 RD. HD. (5)	16.	181695	BOLT 1/2 - 20 x 1 1/4 HEX. (2)	7-12-72 CANCELLED PER MEMO # 316
4.	120382	L.W. 3/8 MED. (9)	17.	159348	BOLT 1/2 - 20 x 5 HEX. (2)	8-16-72 PENDANT FOR AERPARTS ONLY
5.	120377	NUT 3/8 - 16 - HEX. (9)	18.	120371	NUT 1/2 - 20 HEX.	REF MEMO # 316
6.	126227	BOLT 3/8 - 16 x 3/4 RD. HD. (4)	19.	92593	GUARD ASSEM. - BUMPER LH.	10-16-72 157129 WAS 137952 Ch. 3-3-72
7.	704796	SUPPORT (2)	20.	92592	GUARD ASSEM. - BUMPER RH.	
8.	120917	BOLT 1/2 - 13 x 1 1/2 RD. HD. (4)	21.	180122	BOLT 3/8 - 16 x 1 HEX. (4)	
9.	120396	WASHER 1/2 ID. x 1 1/8 OD. (9)	22.	178566	L.W. 3/8 INT. EXT. TOOTH (2)	
10.	120354	L.W. 1/2 MED. SPR. (6)				
11.	120378	NUT 1/2 - 13 HEX. (4)				
12.	98056	BRACKET - FRT. LICENSE				
13.	98378	WASHER - FRT. LICENSE				



CHECKER MOTORS CORP. KALAMAZOO, MICH.

EFFECTIVE SEP 1, 1972

MODEL:
B-11
B-12
B-12E
B-12W

DATE
5-4-72

GRAPHIC ILLUSTRATION

BUMPER ASM. - SHOCK ABSORBER - FRT

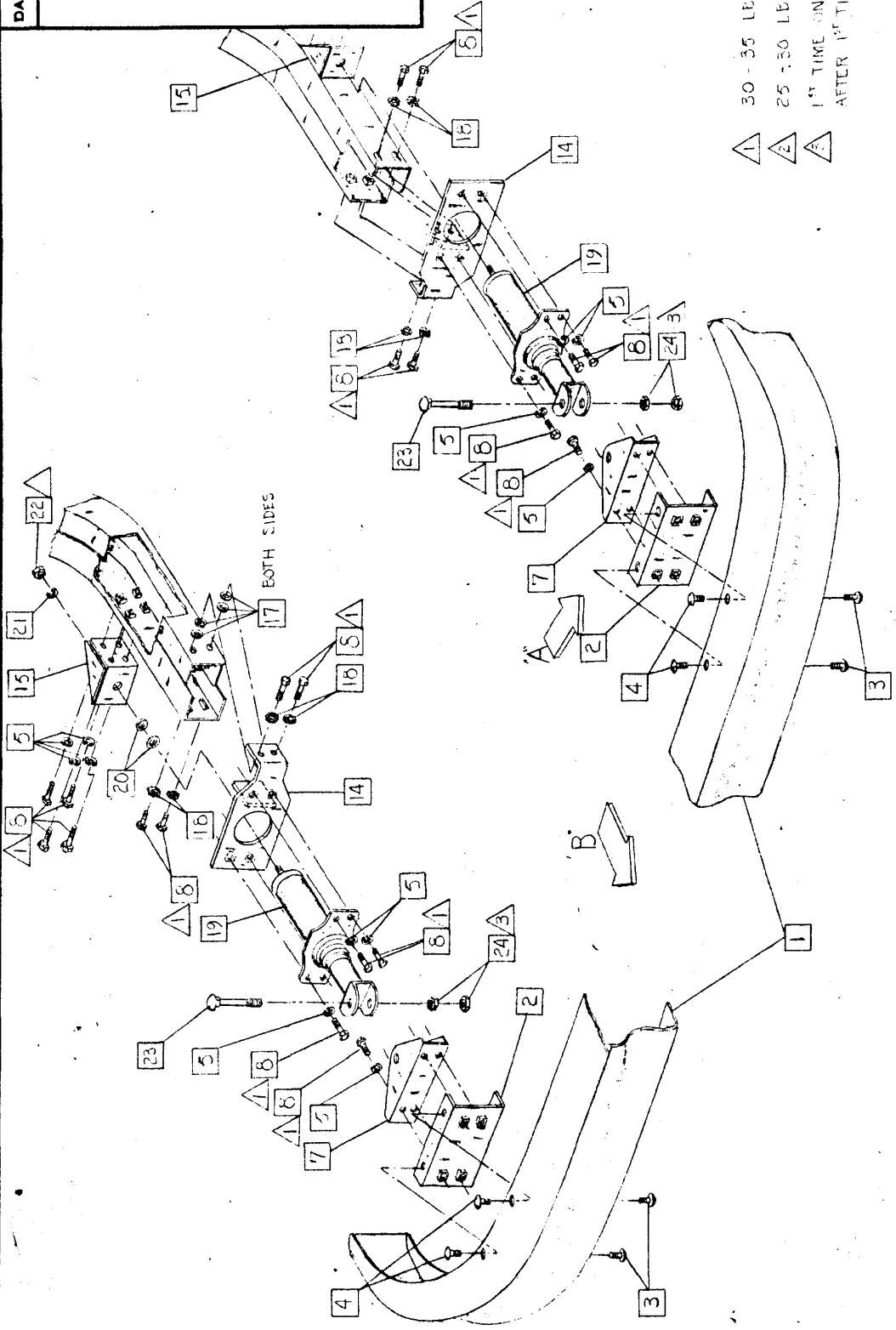
DWN. DEWEE
CHK. 6-2-6-72

SHEET NO. 80 A-3

SUPERSEDES GJ 80 A-1 PER MEMO 316

APPVD.

DATE	CHANGES



- ▲ 30 - 35 LB. FT. TORQUE
- ▲ 25 - 30 LB. FT. TORQUE
- ▲ 15 FT. TORQUE ON 140 - 150 LB. FT. TORQUE AFTER 1ST TIME ON 115 - 125 LB. FT.

FOR PART NO'S SEE G.I. 80 A-4

CHECKER MOTORS CORP. KALAMAZOO, MICH.

EFFECTIVE DATE 5-19-72

MODEL:

- B-11
- B-12E
- B-12W

DATE

5-4-72

GRAPHIC ILLUSTRATION

BUMPER ASM. - SHOCK ABSORBER - FRT.

DWN. *D. Frank*

CHK. *C-6-72*

SHEET NO. 50 A-4

APPRD. SUPERSEDES GL 80A-1 PER MEMO 316

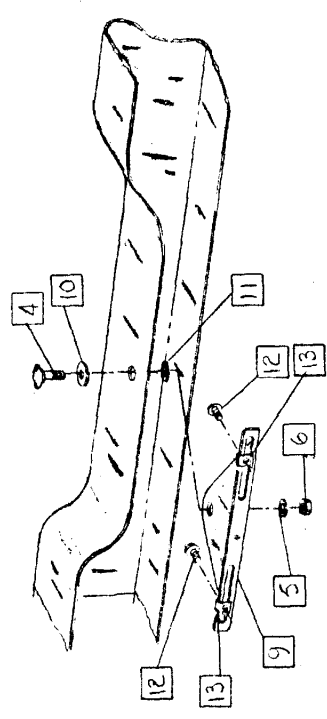
RECOMMENDATIONS FOR HANDLING ENERGY ABSORBING DEVICES

- UNITS UNDER PRESSURE
1. DO NOT ATTEMPT TO REPAIR
 2. DO NOT WELD
 3. DO NOT APPLY HEAT
 4. RELIEVE THE GAS PRESSURE IF UNIT IS TO BE SCRAPPED. WITH A HEAVY METAL PUNCH AND HAMMER BREAK THE WELD AT THE SEALING BALL IN THE END OF THE PISTON TUBE

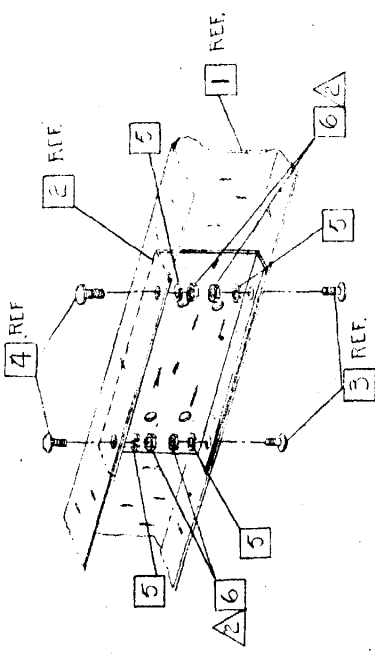
- UNITS BOUND-UP AS A RESULT OF A COLLISION
1. STAND CLEAR OF THE BUMPER
 2. PROVIDE POSITIVE RESTRAINT, SUCH AS A CHAIN OR CABLE
 3. RELIEVE THE GAS PRESSURE BY DRILLING A SMALL HOLE IN THE PISTON TUBE NEAR THE BUMPER BRACKET
 4. REMOVE THE UNIT FROM VEHICLE ONLY AFTER THE GAS PRESSURE HAS BEEN RELIEVED.

- RECOMMENDATIONS TO AVOID DAMAGING UNITS
1. DO NOT ROTATE A UNIT UNLESS IT IS NECESSARY FOR ALIGNMENT OF THE UNIT WITH THE BUMPER BRACKET
 2. DO NOT IMMERSE UNIT IN SOLVENTS
 3. WHEN REMOVING A UNIT FROM A VEHICLE, SUPPORT THE END OF THE BUMPER FROM WHICH THE UNIT IS BEING REMOVED; THIS WILL PREVENT ROTATION OF THE OTHER UNIT

1. 94752 BAR - BUMPER FACE
2. 705122 SUPPORT 4 NUT ASM. - BUMPER BAR MTS. FRT. (2)
3. 126227 BOLT $\frac{3}{8}$ - 16 x $\frac{3}{4}$ RD. HD. SQ. NECK (4)
4. 121807 BOLT $\frac{3}{8}$ - 16 x 1 RD. HD. SQ. NECK (5)
5. 120362 L.W. $\frac{3}{8}$ MED. SPRING (35)
6. 120377 NUT $\frac{3}{8}$ - 16 HEX. (9)
7. 705110 BRACKET ASM. - FRT BUMPER MTS. (2)
8. 181637 BOLT $\frac{3}{8}$ 24 x 1 HEX (32)
9. 98055 BRACKET - FRT. LICENSE SUFT.
10. 95375 WASHER - FRT LICENSE PLATE ERKT.
11. 120326 WASHER - $\frac{1}{2}$ ID x $1\frac{1}{8}$ OD
12. 159129 SCREW $\frac{1}{4}$ - 20 x $\frac{5}{8}$ TH. 31 TAPP (2)
13. 626363 NUT $\frac{1}{4}$ - 20 TINN. (2)
14. 705111 BRACKET ASM. - ENERGY ABSORBER MTS. - FRT. (2)
15. 705112 BRACKET ASM. - ENERGY ABSORBER MTS. - REAR (2)
16. 446363 WASHER $\frac{3}{8}$ ID x $\frac{1}{8}$ O.D. (8) OR AS REQ'D
17. 178551 L.W. $\frac{3}{8}$ INT. EXT. TOOTH (8)
18. 705142 ENERGY ABSORBER ASM. - BUMPER (2)
19. 120365 WASHER $\frac{1}{16}$ ID x 1 OD (2) OR AS REQ'D
20. 120383 L.W. $\frac{1}{16}$ MED. SPRING (2)
21. 272122 NUT $\frac{1}{16}$ - 14 HEX. (2)
22. 271758 BOLT $\frac{3}{8}$ - 16 x $4\frac{1}{2}$ HEX (2)
23. 124944 NUT $\frac{3}{8}$ - 18 HEX (4)



VIEW IN DIRECTION OF ARROW "B"



VIEW IN DIRECTION OF ARROW "A"

DATE	CHANGES
7-12-71	(8) 178551 WAS (4)
6-9-72	178551 WAS 157551
2-15-72	271758 WAS 226924
~	124944 WAS 241245

CHECKER MOTORS CORP. KALAMAZOO, MICH.

EFFECTIVE SECT 1, 1972

MODEL:
B-11
B-11E
B-12
B-12E
B-12W
B-12W

8-12-76

DATE
8-16-72

GRAPHIC ILLUSTRATION

BUMPER ASM.- REAR

DWN. DRAWING
CHK. 1-72

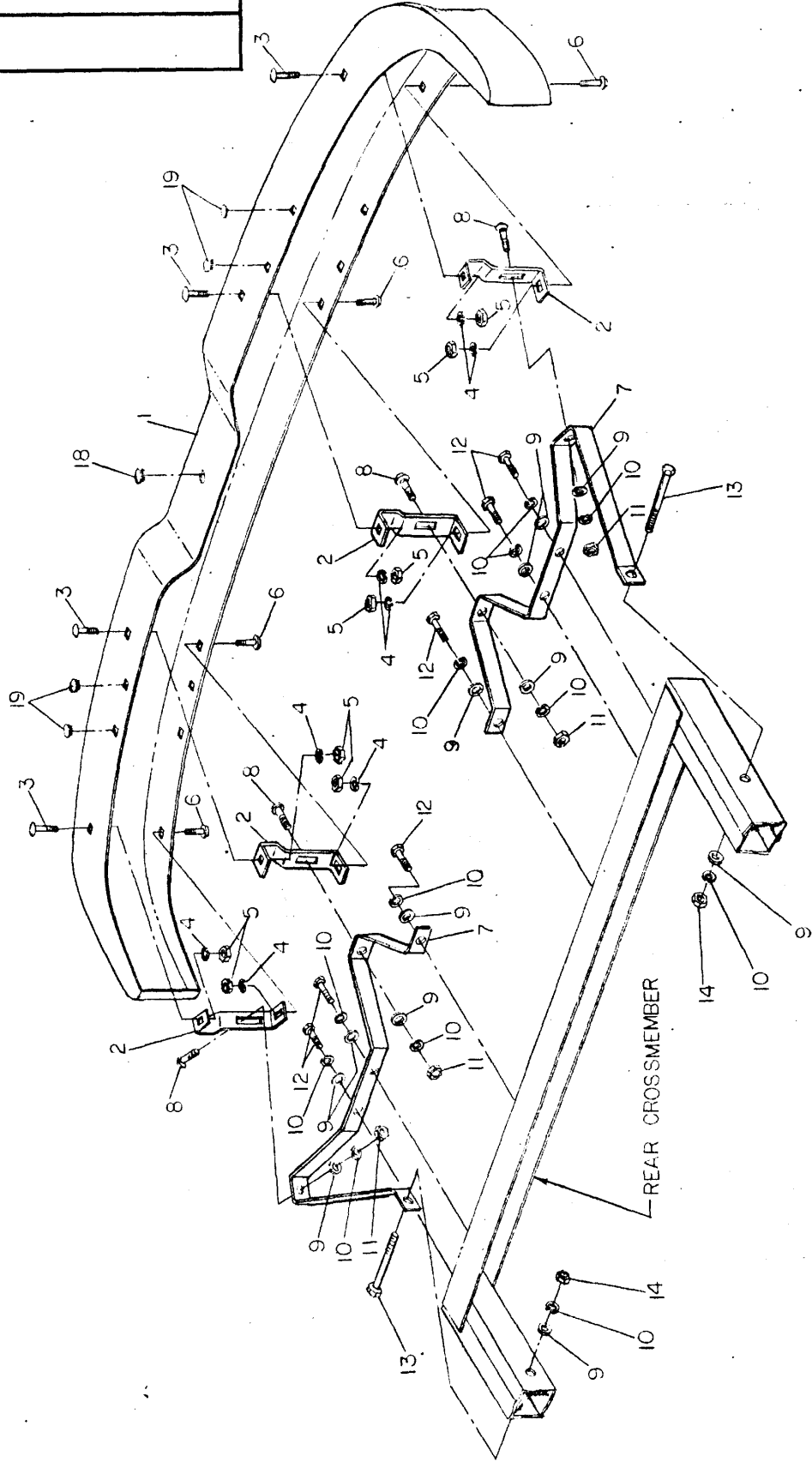
SHEET NO. 30 A-5

APPVD. SUPERSEDES G.I. 80A-2 PER MEMO 816

DATE

CHANGES

PART NOS SEE G.I. 80A-6



CHECKER MOTORS CORP. KALAMAZOO, MICH.

EFFECTIVE SEPT. 1, 1972

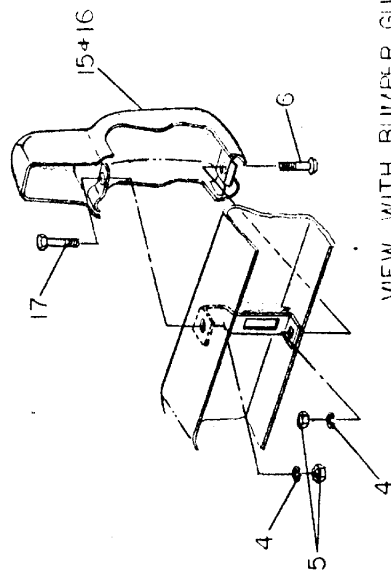
MODEL: B-11 B-11E B-11E	B-12	B-12W8	DATE	8-16-72
	B-12E	B-12W8	GRAPHIC ILLUSTRATION	
	B-12W	B-12W8	BUMPER ASM. - REAR	

DWN. DESK	
CHK. P.S.	
APPVD.	

SHEET NO. 80 A-6
SUPERSEDES 61 80A-2 PER MEMO 316

	CHANGES
1. 94752	
2. 98303	
3. 121807	
4. 120382	
5. 120377	
6. 126227	
7. 706091	
8. 120217	
9. 120336	
10. 120334	
11. 120378	
12. 121628	
13. 171625	
14. 120371	
15. 92595	
16. 92592	
17. 160122	
18. 626787	
19. 626905	

- 1. BAR - BUMPER FACE
- 2. BRACKET - BUMPER FACE (4)
- 3. BOLT $\frac{3}{8}$ -16 x 1 RD. HD SQ NECK (4) W/OUT GUARDS, (2) WITH GUARDS
- 4. L.W. $\frac{3}{8}$ MED. SPRING (8)
- 5. NUT $\frac{3}{8}$ -16 HEX. (8)
- 6. BOLT $\frac{3}{8}$ -16 x $\frac{3}{4}$ RD HD SQ NECK (4)
- 7. SUPPORT - REAR BUMPER (2)
- 8. BOLT $\frac{1}{2}$ -13 x 1 RD HD SQ NECK (4)
- 9. WASHER $\frac{1}{2}$ ID x $\frac{1}{16}$ OD. (12)
- 10. L.W. $\frac{1}{2}$ MED. SPRING (12)
- 11. NUT $\frac{1}{2}$ -13 HEX. (4)
- 12. BOLT $\frac{1}{2}$ -20 x $\frac{1}{4}$ HEX (6)
- 13. BOLT $\frac{1}{2}$ -20 x $\frac{3}{4}$ HEX (2)
- 14. NUT $\frac{1}{2}$ -20 HEX (2)
- 15. GUARD ASM. - BUMPER LH.
- 16. GUARD ASM. - BUMPER RH.
- 17. BOLT $\frac{3}{8}$ -16 x 1 HEX (2) WITH GUARDS ONLY
- 18. CAPPLUG $\frac{1}{4}$ DIA.
- 19. PLUG - PLASTIC (4)



VIEW WITH BUMPER GUARDS