

CHECKER MOTORS CORP. KALAMAZOO, MICH.

EFFECTIVE OCT. 1, 1970

MODEL: B-12  
B-11E  
B-11E

DATE  
9-14-70

GRAPHIC ILLUSTRATION

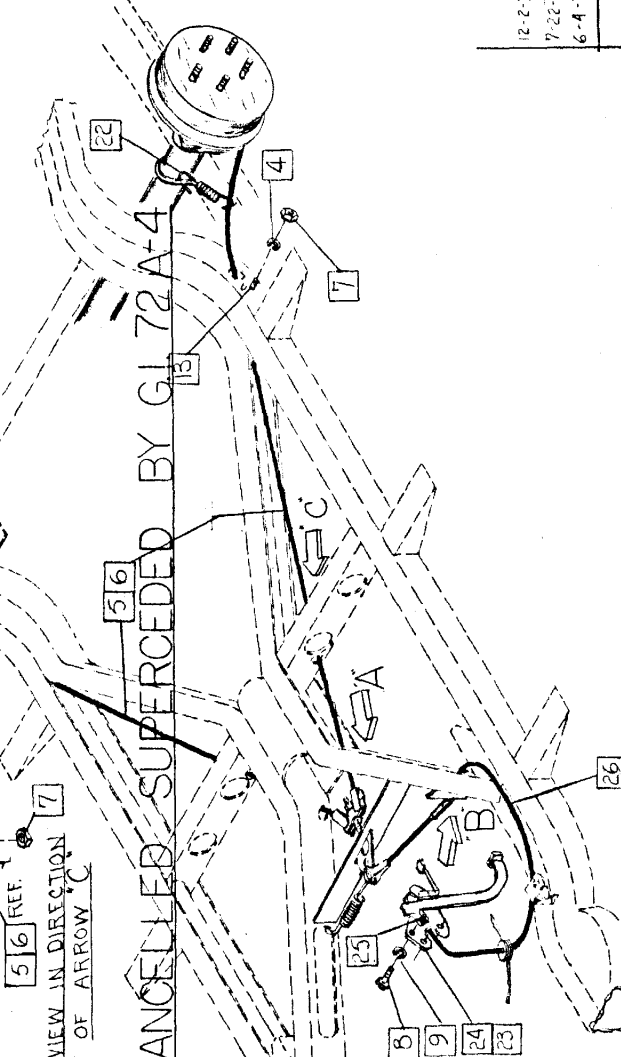
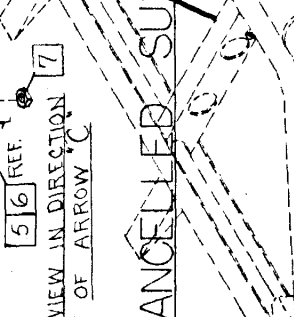
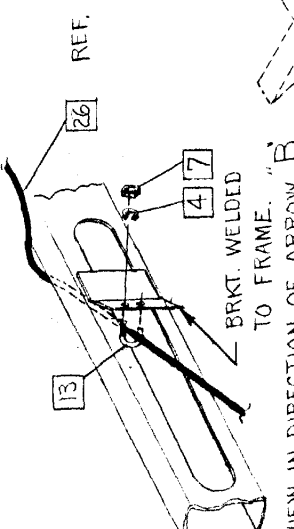
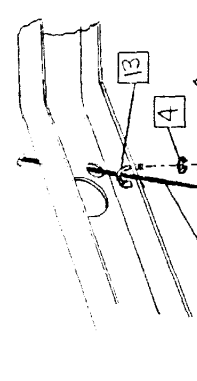
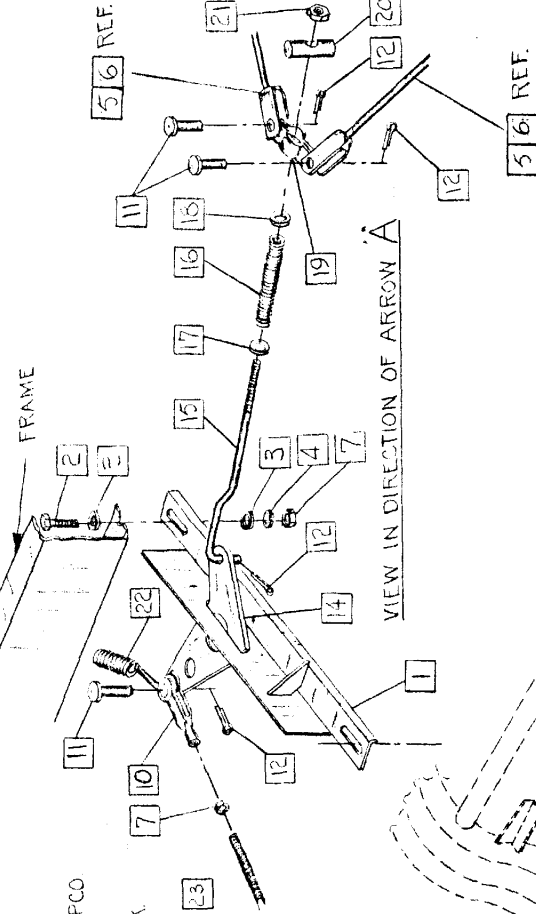
ERAKE - PARKING - CABLE INSTALL.

SHEET NO. 72 A-1

DWN. LEVER  
CHK. 9 K &

APPVD.

- |     |        |  |     |        |                                      |
|-----|--------|--|-----|--------|--------------------------------------|
| 1.  | 701578 | BRACKET ASSEM.                                       | 19. | 702155 | EQUALIZER (2)                        |
| 2.  | 181608 | BOLT $\frac{3}{16}$ " x 1 HEX. (2)                   | 20. | 80517  | FINOT                                |
| 3.  | 94354  | WASHER (4)   | 21. | 626951 | NUT $\frac{5}{16}$ " x 24 HEX-GRIPCO |
| 4.  | 120214 | L.W. $\frac{3}{16}$ " MED. SPRING (7)                | 22. | 94345  | SPRING (3)                           |
| 5.  | 703744 | CABLE ASM. - PK. BRK. (2) 120WB                      | 23. | 703208 | LEVER + SW. ASM. - PK. BRK.          |
| 6.  | 703745 | CABLE ASM. - PK. BRK. (2) 129WB                      | 24. | 703209 | LEVER + REINE. ASM.                  |
| 7.  | 120368 | NUT $\frac{3}{16}$ " x 24 HEX. (8)                   | 25. | 703303 | SWITCH ASM. PART OF 23               |
| 8.  | 151666 | BOLT $\frac{7}{16}$ " x 20 x 1 HEX. (3)              | 26. | 93885  | CABLE ASM.                           |
| 9.  | 120363 | L.W. $\frac{3}{16}$ " MED SPRING (5)                 |     |        |                                      |
| 10. | 144242 | CLEVIS $\frac{5}{16}$ " ADJ.                         |     |        |                                      |
| 11. | 120690 | PIN (3)  |     |        |                                      |
| 12. | 121222 | COTTER PIN $\frac{3}{32}$ " x $\frac{3}{4}$ " (4)    |     |        |                                      |
| 13. | 70779  | CLAMP (5)  |     |        |                                      |
| 14. | 94782  | LEVER - PARK. ERAKE                                  |     |        |                                      |
| 15. | 94643  | ROD  |     |        |                                      |
| 16. | 92613  | SPRING   |     |        |                                      |
| 17. | 120393 | WASHER $\frac{1}{32}$ " I.D. x $\frac{1}{16}$ " O.D. |     |        |                                      |
| 18. | 120394 | WASHER $\frac{1}{32}$ " I.D. x $\frac{1}{16}$ " O.D. |     |        |                                      |



12-2-71 CANCELLED  
7-22-71 703209, 703303, 93885 Amend  
6-4-71 703208 W/ 701320

CHANGES

CHECKER MOTORS CORP. KALAMAZOO, MICH.

EFFECTIVE OCT. 1, 1970

MODEL:

B-12 W6

DATE

9-14-70

GRAPHIC ILLUSTRATION

BRAKE - PARKING CABLE INSTALL. AEROBUS

DWN. DESKES

CHK. GKP

SHEET NO.

72 A-2

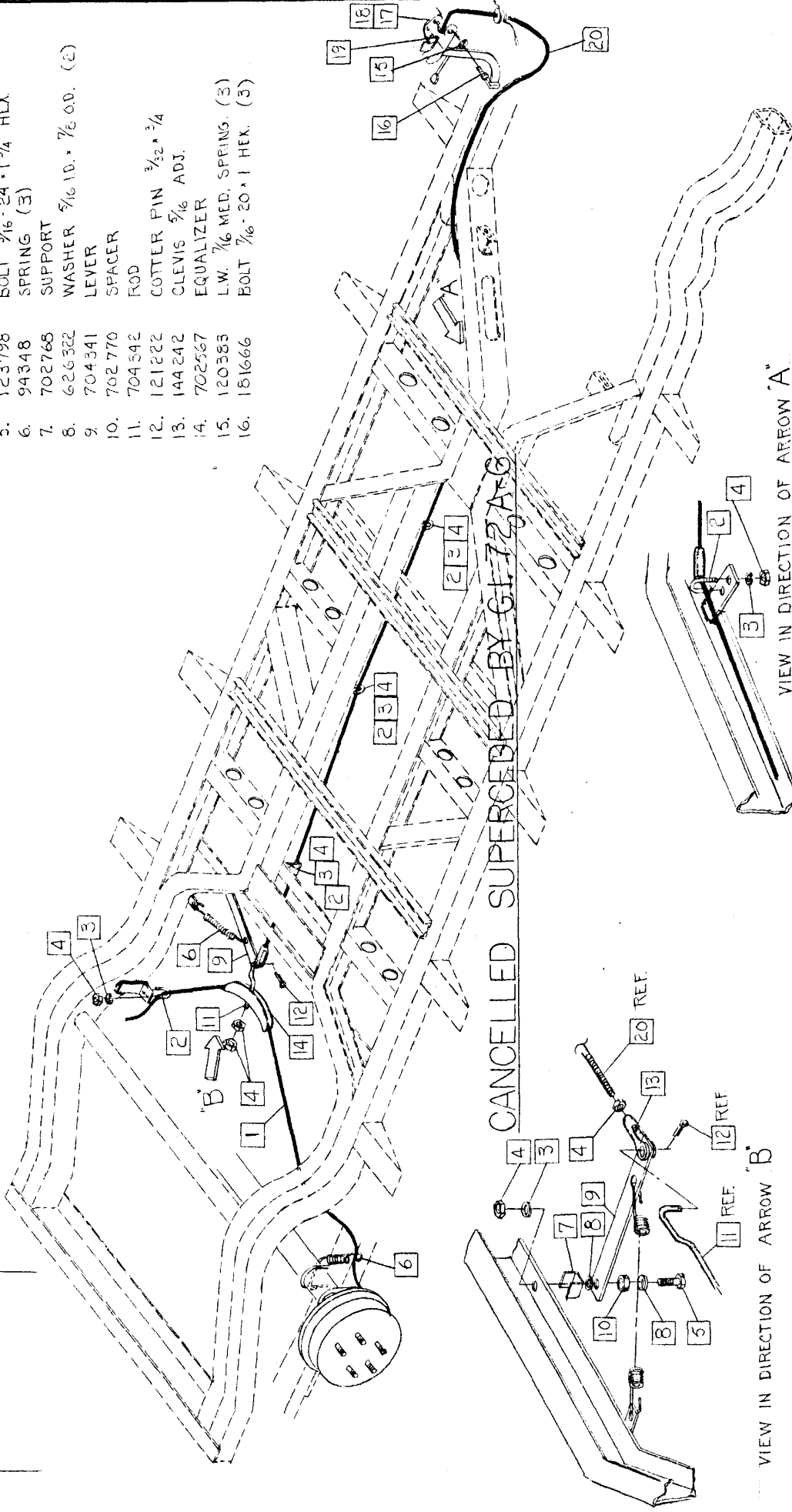
APPVD.

CHANGES

7-22-70 703209, 703303, 701453  
ADD'D

- 17. 701491 LEVER + SW ASM. - FT. PK. BRK.
- 18. 703209 LEVER + REINT. ASM.
- 19. 703303 SWITCH ASM. PART OF 17 REF. ONLY.
- 20. 701453 CABLE ASM.

- 1. 701460 CABLE ASM. - PK. BRK. REAR
- 2. 70779 CLAMP (6)
- 3. 120214 L.W. 5/16 MED. SPRING (7)
- 4. 120368 NUT 5/16-24 HEX. (10)
- 5. 123798 BOLT 5/16-24 x 1 3/4 HEX.
- 6. 94348 SPRING (3)
- 7. 702768 SUPPORT
- 8. 6-26322 WASHER 5/16 I.D. x 7/8 O.D. (2)
- 9. 704341 LEVER
- 10. 702770 SPACER
- 11. 704542 ROD
- 12. 121222 COTTER PIN 3/32 x 3/4
- 13. 144242 CLEVIS 5/16 ADJ.
- 14. 702567 EQUALIZER
- 15. 120383 L.W. 7/16 MED. SPRING. (3)
- 16. 181666 BOLT 7/16-20 x 1 HEX. (3)



VIEW IN DIRECTION OF ARROW 'B'

VIEW IN DIRECTION OF ARROW 'A'

CHECKER MOTORS CORP. KALAMAZOO, MICH.

EFFECTIVE OCT. 1, 1970

SHEET NO. 72 A-3

DWN. DEKKE  
CHK. CPA-21-71

APPVD.

GRAPHIC ILLUSTRATION

BRAKE - PARKING KICK RAIL INSTALL.

DATE

4-9-71

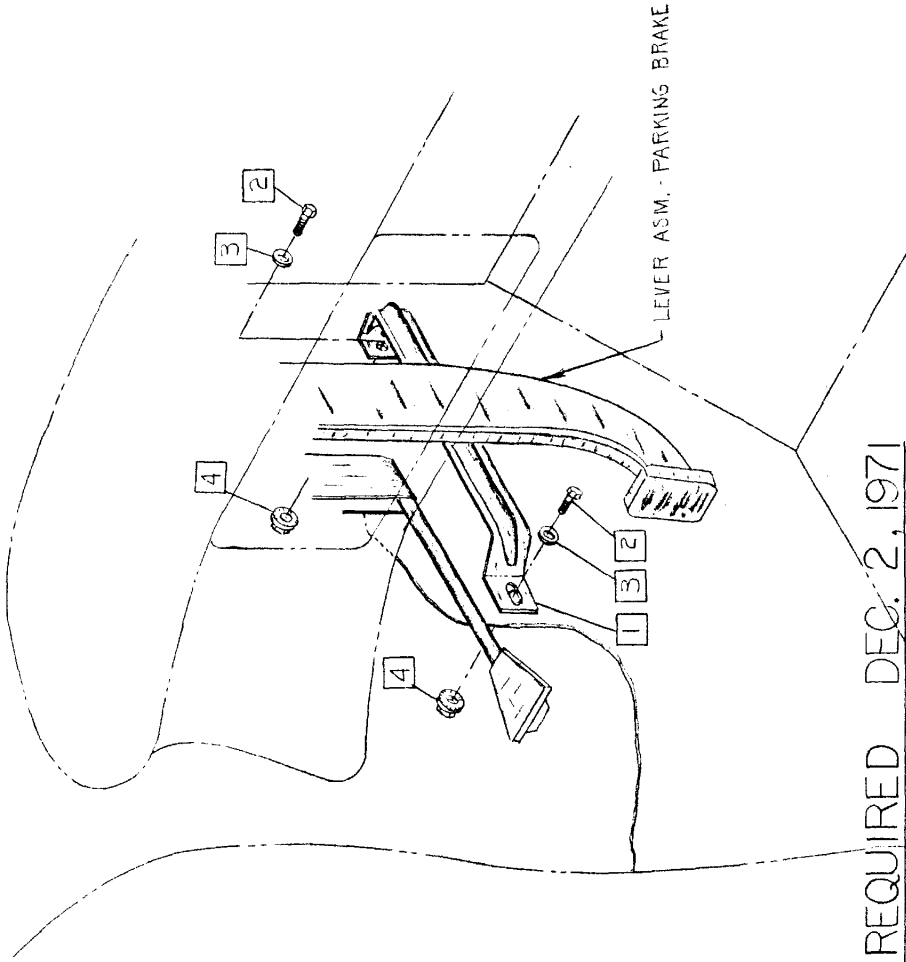
A-12W8

MODEL:

A-11

A-11E

- 1. 644236 KICK RAIL - PARKING BRAKE LEVER
- 2. 121900 BOLT 1/4-20 x 1 HEX. (2)
- 3. 120392 WASHER 3/8 I.D. x 3/8 O.D. (2)
- 4. 626403 NUT, WASHER + SEALER ASM. 1/4-20 (2)



CANCELLED NOT REQUIRED DEC. 2, 1971

CHECKER MOTORS CORP. KALAMAZOO, MICH.

EFFECTIVE JAN 1, 1972

DWN. DEERE  
CHK.

SHEET NO. 72 A-4

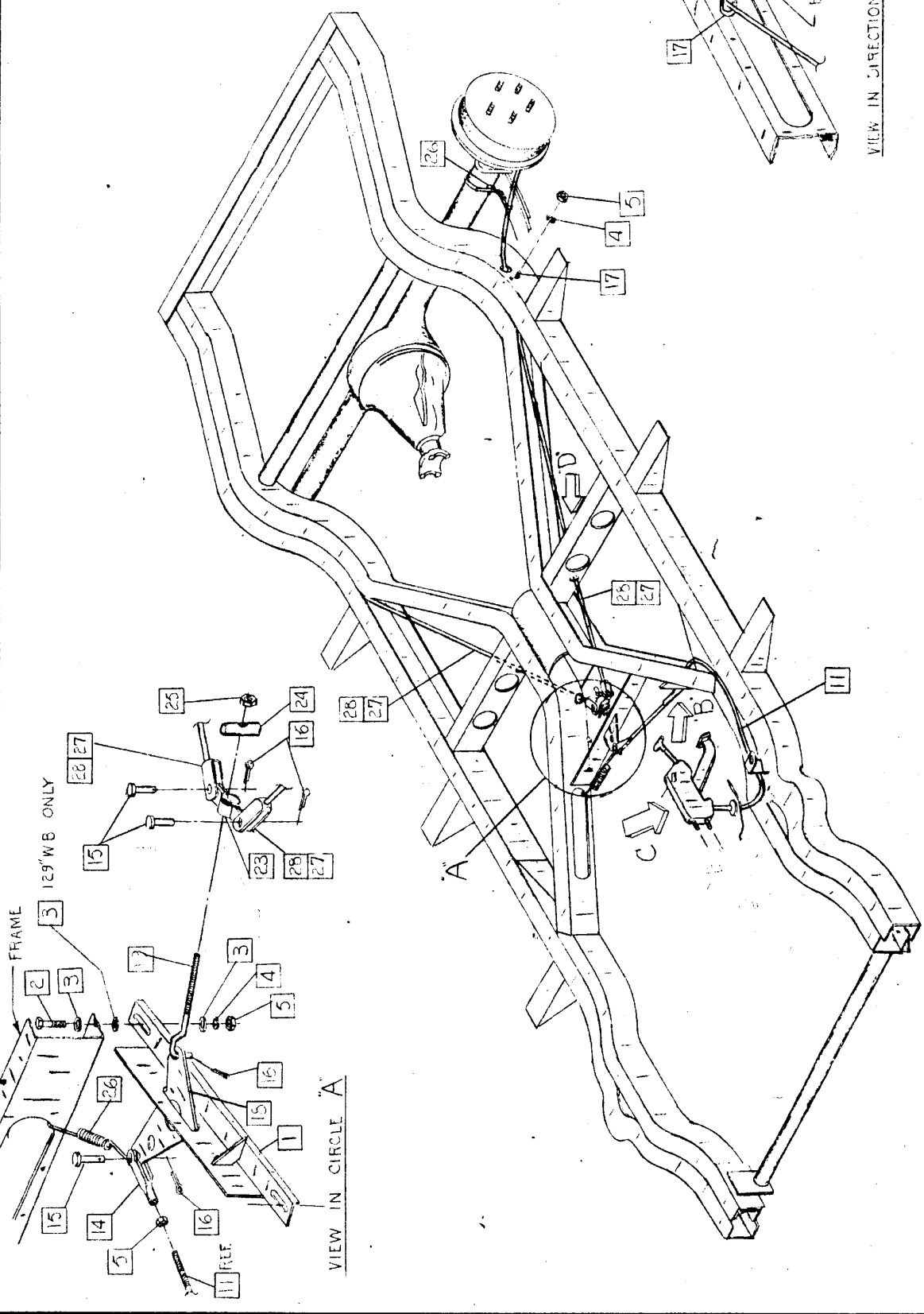
GRAPHIC ILLUSTRATION  
BRAKES - PARKING

DATE  
11-29-71

MODEL:  
B-12  
B-11E  
B-12E  
B-12W

APPVD.

DATE	CHANGES
15 2/72	



VIEW IN DIRECTION OF ARROW 'B'

CHECKER MOTORS CORP. KALAMAZOO, MICH.

EFFECTIVE JAN 1, 1972

MODEL: B-12  
B-12E  
B-12W

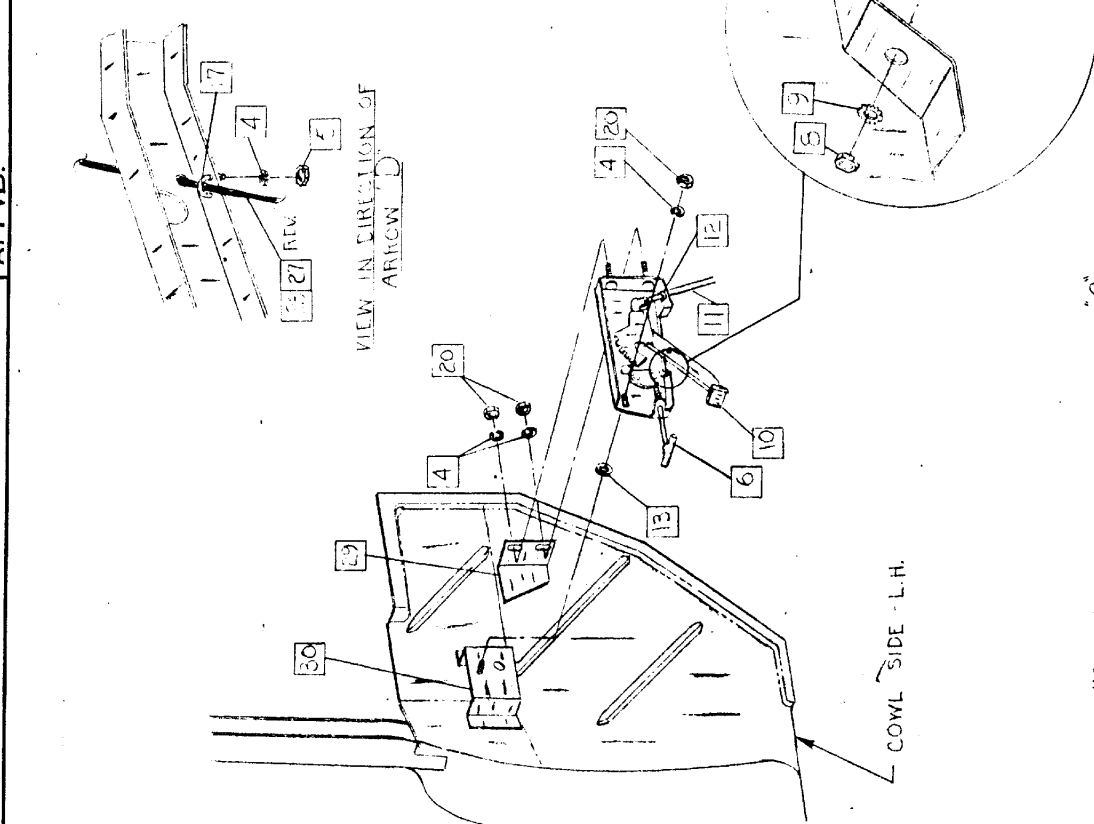
DATE  
11-29-71

GRAPHIC ILLUSTRATION  
BRAKES - PARKING

DWN. CHK.  
APPVD.

SHEET NO. 72 A-5

DATE	CHANGES
10-27-71	REVISIONS REMARKS 12-27-71 V-127-253



1. 701578 BRACKET ASM. - PK. BRAKE LIVER
2. 181605 BOLT - 3/16" - 24.1 HEX. (2)
3. 94554 WASHER (4) 120"WB (6) 129"WB
4. 120214 L.W. 3/16" MED. SPRING (10)
5. 120328 NUT 3/16" - 24 HEX. (8)
6. 705055 CONTROL ASM. - PK. BRAKE
7. 704766 SWITCH ASM. - LH. FRT. PILLAR
8. 124524 NUT 3/16" - 18 HEX. JAM.
9. 136435 L.W. 3/16" EXT. TOOTH
10. 94336 PAD - PK. BRAKE PEDAL
11. 705049 CABLE ASM. - PK. BRAKE FRT.
12. 706195 RETAINER - PK. BRAKE CABLE
13. 626322 WASHER 3/16" ID. - 1/2" OD - .065
14. 144242 CLEVIS 3/16" ADJ.
15. 120690 PIN 3/16" (3)
16. 121222 COTTER PIN 3/32" x 3/4 (4)
17. 70779 CLAMP - PK. BRAKE CABLE - REAR. (5)
18. 94782 LEVER - PK. BRAKE FRAME.
19. 94643 ROD - PK. BRAKE EQUALIZER
20. 120376 NUT 3/16" - 18 HEX.
- 21.
- 22.
23. 702155 EQUALIZER - PARKING BRAKE.
24. 80517 PIVOT - PK. BRAKE EQUALIZER
25. 626851 NUT 3/16" - 24 HEX. CRWN LOCK
26. 94348 SPRING - PK. ERK. CABLE (3)
27. 703744 CABLE ASM. - PK. BRAKE 120"WB (2)
28. 703745 CABLE ASM. - PK. BRAKE 129"WB (2)
29. 646491 BRACKET - PK. BRAKE CONTROL MTS. - FRT.
30. 647307 BRACKET + BOLT ASM. - PK. BRAKE CONT. MTS. - REAR