

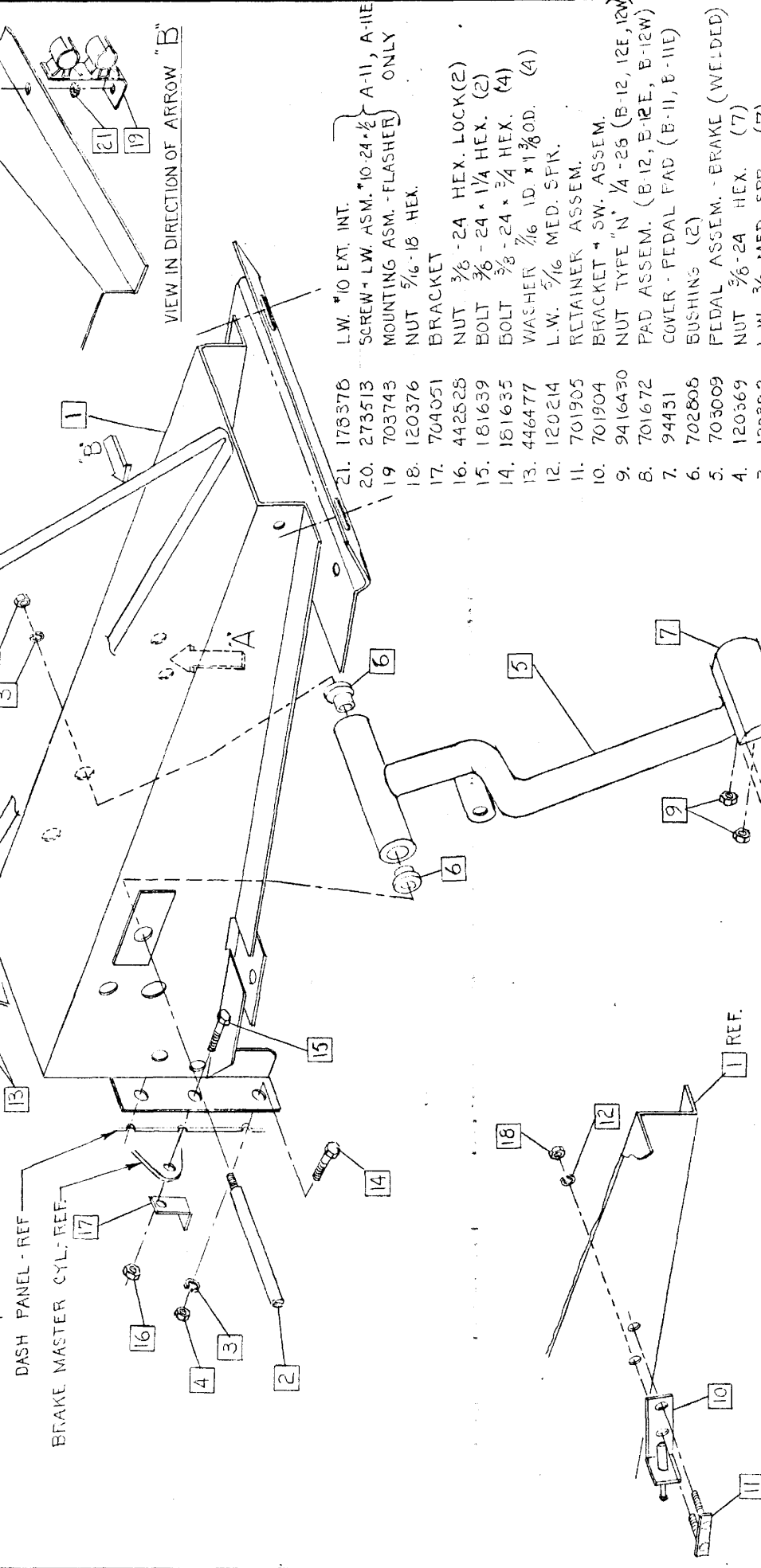
CHECKER MOTORS CORP. KALAMAZOO, MICH.

EFFECTIVE OCT. 1, 1969

MODEL:	B-12	B-12WB	DATE	6-17-69	GRAPHIC ILLUSTRATION	CHK. R.C.F.	SHEET NO.	74 A-1
	B-11				BRAKE PEDAL SUPPORT - AUTO. TRANS. - STD. BRAKES	APPVD.		
	B-11E	B-12W						CANCELLED OCT 1 1970

**CHANGES**

10-23-70	120376	ADDED
5-20-70	703743, 273513*	170376
		ADDED
5-11-70	446477	WAS 120394



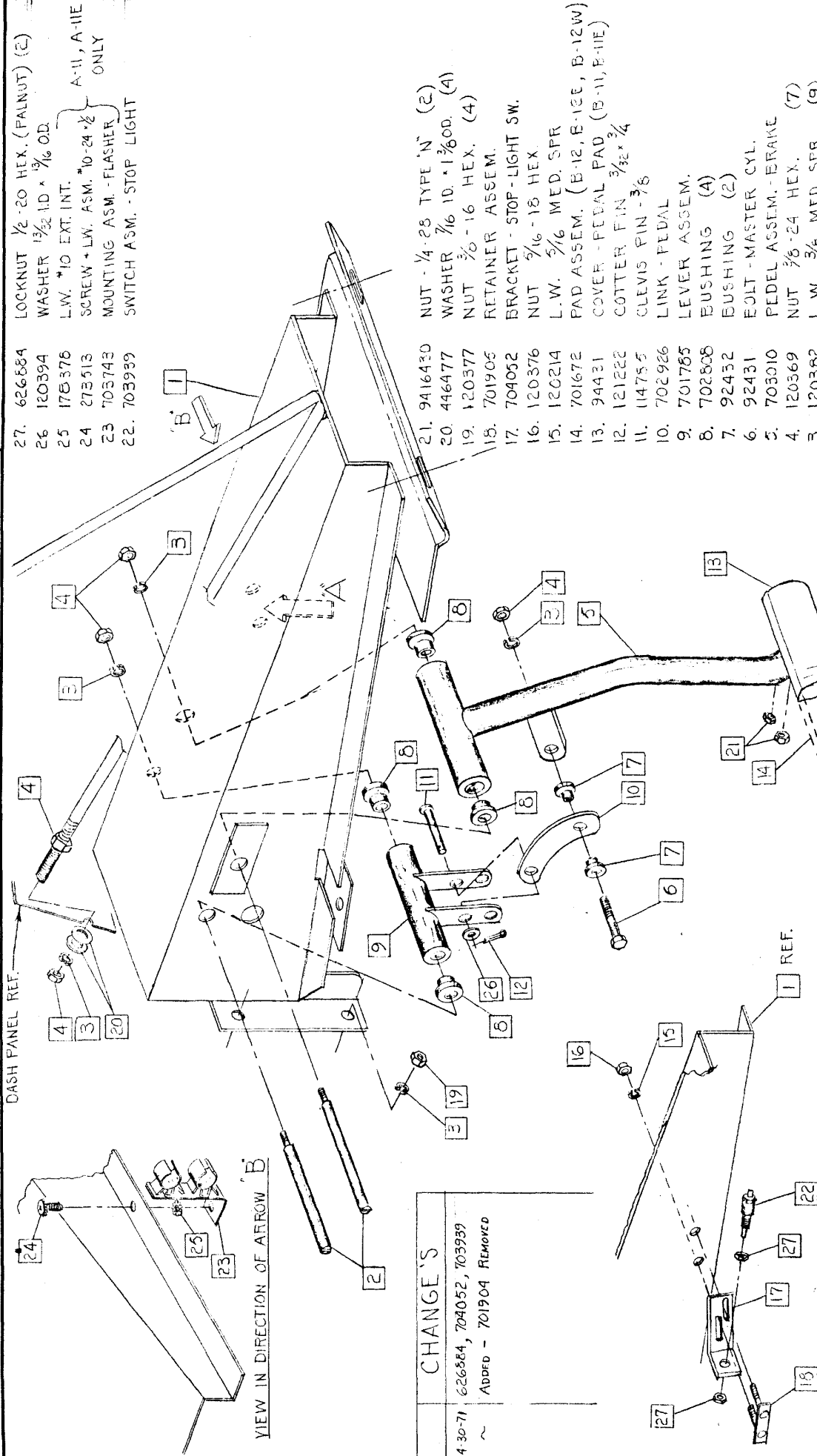
- |     |         |   |
|-----|---------|---|
| 21. | 170376  | L.W. #10 EXT. INT.                      |
| 20. | 273513  | SCREW - LW. ASM. #10-24*1/2 A-11, A-11E |
| 19. | 703743  | MOUNTING ASM. - FLASHER ONLY            |
| 18. | 120376  | NUT 5/16-18 HEX.                        |
| 17. | 704051  | BRACKET                                 |
| 16. | 442828  | NUT 3/8-24 HEX. LOCK (2)                |
| 15. | 181639  | BOLT 3/8-24*1/4 HEX. (2)                |
| 14. | 181635  | BOLT 3/8-24*3/4 HEX. (4)                |
| 13. | 446477  | WASHER 3/16 ID.*1 3/8 OD. (4)           |
| 12. | 120214  | L.W. 5/16 MED. SPK.                     |
| 11. | 701905  | RETAINER ASSEM.                         |
| 10. | 701904  | BRACKET - SW. ASSEM.                    |
| 9.  | 9416430 | NUT TYPE "N" 1/4-25 (B-12, 12E, 12W)    |
| 8.  | 701672  | PAD ASSEM. (B-12, B-12E, B-12W)         |
| 7.  | 94431   | COVER - PEDAL PAD (B-11, B-11E)         |
| 6.  | 702806  | BUSHING (2)                             |
| 5.  | 703009  | PEDAL ASSEM. - BRAKE (WELDED)           |
| 4.  | 120369  | NUT 3/8-24 HEX. (7)                     |
| 3.  | 120382  | L.W. 3/8 MED. SPK. (7)                  |
| 2.  | 94430   | SHAFT - BRAKE PEDAL                     |
| 1.  | 703500  | SUPPORT ASSEM. - PEDAL (WELDED)         |

CHECKER MOTORS CORP. KALAMAZOO, MICH.

EFFECTIVE: OCT. 1, 1970

MODEL:	B-11E	B-12W &	DATE	9-16-70	GRAPHIC ILLUSTRATION	DWN. DEAKER	SHEET NO.	74	A-2
	B-11	B-12E			BRAKE PEDAL SUPPORT - AUTO. TRANS WITH PWR. BRAKE	CHK. R.E.P.			
	B-12	B-12W							

DASH PANEL REF. APPVD.



CHANGE'S  
 4-30-71 626684, 704052, 703939  
 Added - 701904 REMOVED

- 27. 626684 LOCKNUT 1/2-20 HEX. (FALNUT) (C)
- 26. 160394 WASHER 1 1/2 ID x 1 1/8 OD.
- 25. 178376 L.W. \*10 EXT. INT.
- 24. 273513 SCREW + L.W. ASM. \*10-24 1/2
- 23. 703743 MOUNTING ASM. - FLASHER
- 22. 703939 SWITCH ASM. - STOP LIGHT

A-11, A-11E ONLY

- 21. 9416430 NUT - 1/4-28 TYPE 'N' (2)
- 20. 446477 WASHER 7/16 ID. \*1 1/8 OD. (4)
- 19. 120377 NUT 3/8 - 16 HEX. (4)
- 18. 701905 RETAINER ASSEM.
- 17. 704052 BRACKET - STOP-LIGHT SW.
- 16. 120376 NUT 3/16 - 18 HEX.
- 15. 120214 L.W. 3/16 MED. SPR.
- 14. 701672 PAD ASSEM. (B-12, B-12E, B-12W)
- 13. 94431 COVER - PEDAL PAD (B-11, B-11E)
- 12. 121222 COTTER PIN 3/32 x 3/4
- 11. 114755 CLEVIS PIN - 3/8
- 10. 702926 LINK - PEDAL
- 9. 701765 LEVER ASSEM.
- 8. 702808 BUSHING (4)
- 7. 92432 BUSHING (2)
- 6. 92431 BOLT - MASTER CYL.
- 5. 703010 PEDEL ASSEM. - BRAKE
- 4. 120369 NUT 3/8 - 24 HEX.
- 3. 120362 L.W. 3/8 MED. SPR. (9)
- 2. 94430 SHAFT - BRAKE PEDAL (2)
- 1. 703746 SUPPORT ASSEM. - PEDAL (WELDED)

VIEW IN DIRECTION OF ARROW 'A' CANCELLED SUPERCEDED BY G.I. 74A-4

CHECKER MOTORS CORP. KALAMAZOO, MICH.

EFFECTIVE OCT 1, 1969

MODEL: B-12W8

DATE

6-24-69

GRAPHIC ILLUSTRATION

BRAKE PEDAL SUPPORT - STD. TRANS. WITH PWR. BRAKE

DWN. DEKKER

SHEET NO. 74

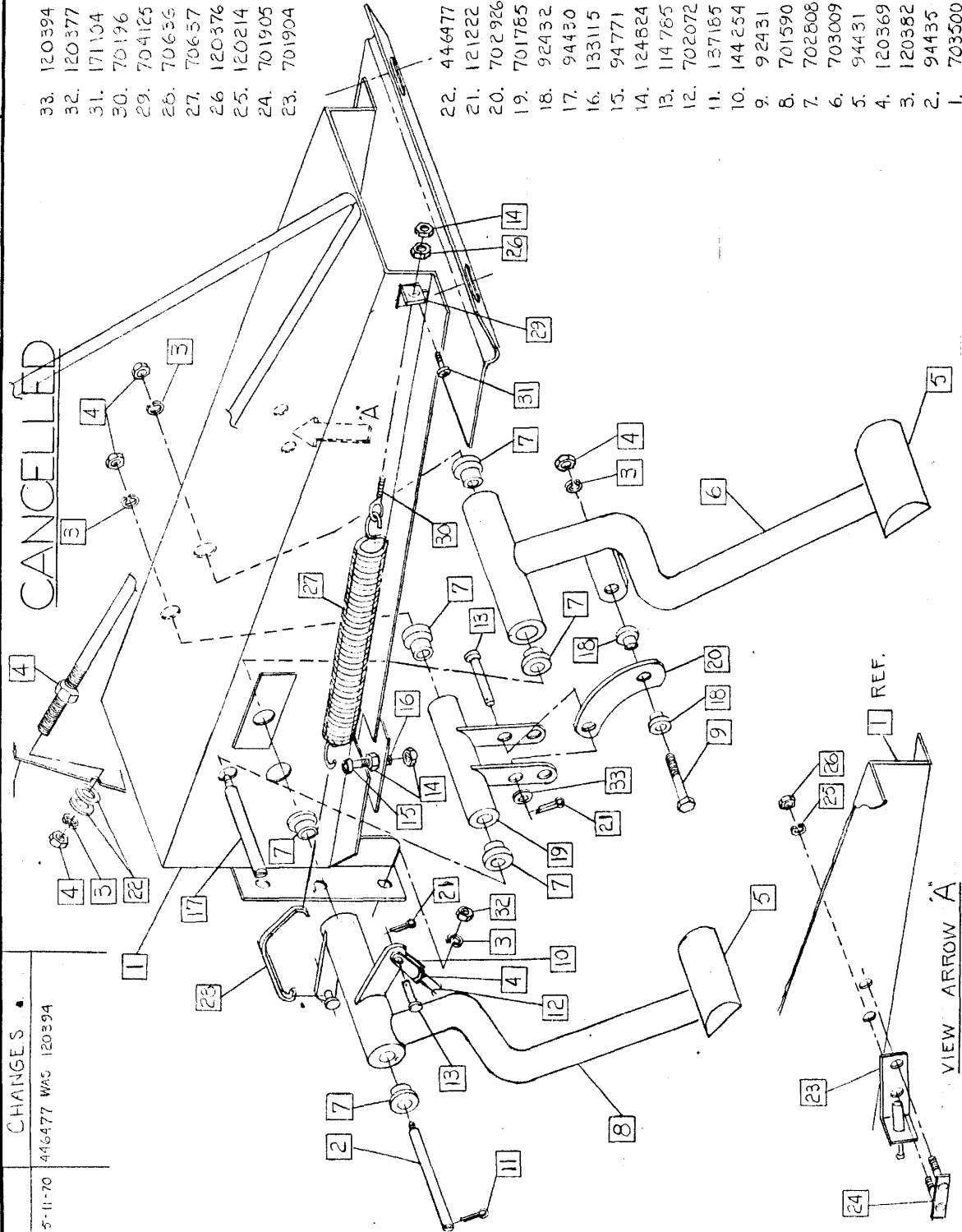
A-3

APFVD.

CANCELLED OCT 1 1970

CHANGES •  
5-11-70 446477 WAS 120394

**CANCELLED**



- 33. 120394
- 32. 120377
- 31. 171104
- 30. 70196
- 29. 704125
- 28. 70636
- 27. 70657
- 26. 120376
- 25. 120214
- 24. 701905
- 23. 701904

- WASHER  $\frac{1}{16}$  I.D.  $\times \frac{1}{16}$  O.D.
- NUT  $\frac{3}{16}$  - 16 HEX. (4)
- SCREW  $\frac{5}{16}$  - 18  $\times \frac{1}{2}$  HEX.
- BOLT
- NICHOR
- HOOK - CLUTCH SPRING
- SPRING - CLUTCH PEDAL
- NUT  $\frac{3}{16}$  - 18 HEX. (2)
- L.W.  $\frac{5}{16}$  MED. SPR.
- RETAINER ASSEM.
- BRACKET & SW. ASSEM.

- 22. 446477
- 21. 121222
- 20. 702926
- 19. 701785
- 18. 92432
- 17. 94430
- 16. 133115
- 15. 94771
- 14. 124824
- 13. 114785
- 12. 702072
- 11. 137185
- 10. 144254
- 9. 92431
- 8. 701590
- 7. 702808
- 6. 703009
- 5. 94431
- 4. 120369
- 3. 120382
- 2. 94435
- 1. 703500

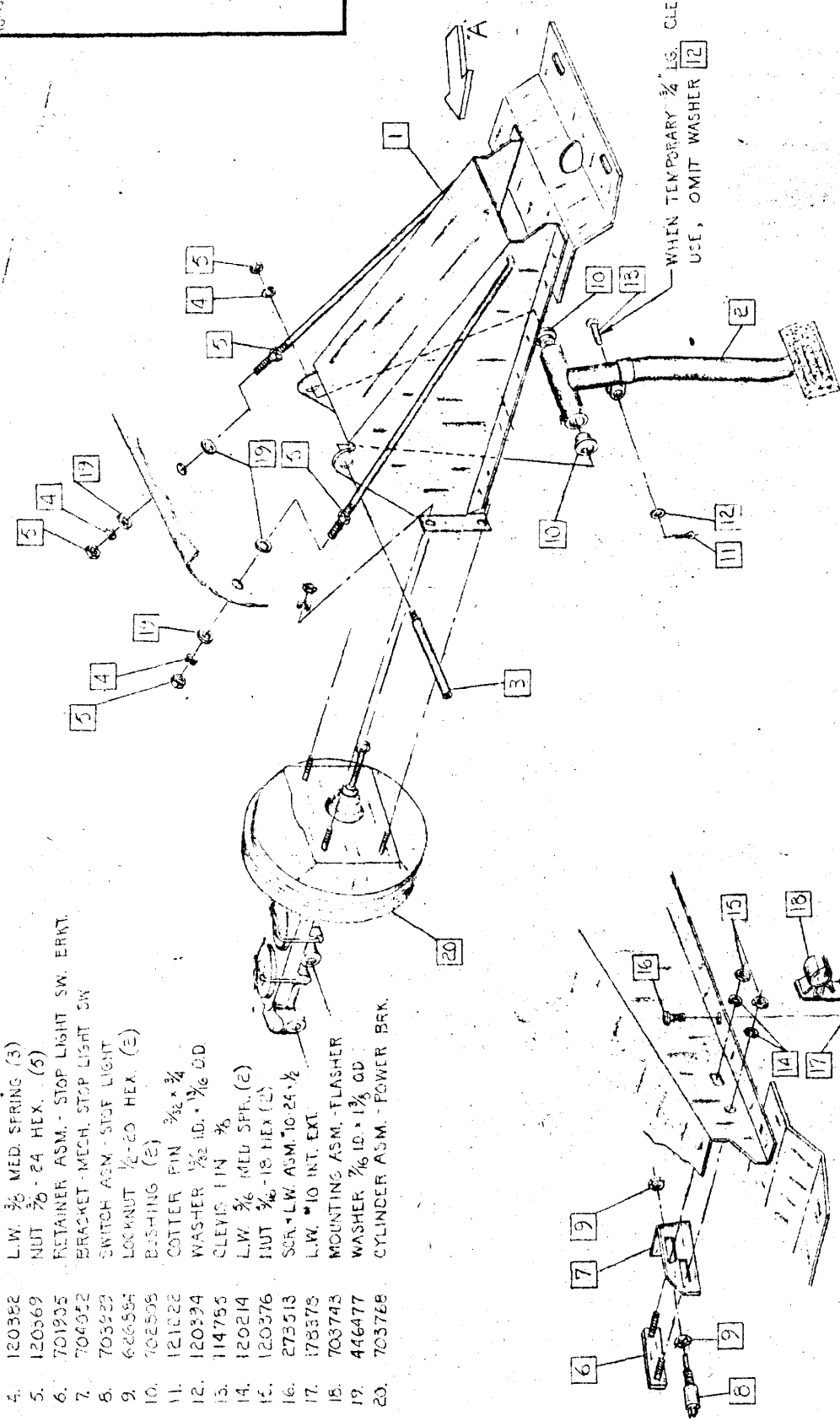
- WASHER  $\frac{1}{16}$  I.D.  $\times \frac{3}{16}$  O.D. (4)
- COTTER PIN  $\frac{3}{32} \times \frac{3}{4}$  (2)
- LINK - PEDAL
- LEVER ASSEM.
- BUSHING (2)
- SHAFT - PEDAL (BRAKE)
- SCREW  $\frac{5}{16}$  - 18  $\times \frac{1}{4}$  RD. HD.
- CAP - CLUTCH PEDAL STOP
- NUT  $\frac{3}{16}$  - 18 JAM. (3)
- PIN - STD.  $\frac{3}{16}$  CLEVIS (2)
- ROD - CLUTCH
- COTTER PIN  $\frac{1}{8} \times 1$
- CLEVIS  $\frac{3}{8}$
- BOLT - MASTER CYL. ROD
- PEDAL ASSEM. - CLUTCH (WELDED)
- BUSHING (6)
- PEDAL ASSEM. BRAKE (WELDED)
- COVER - PEDAL PAD (2)
- NUT  $\frac{3}{8}$  - 24 HEX. (8)
- L.W.  $\frac{3}{8}$  MED. SPRING. (9)
- SHAFT - CLUTCH - BRAKE
- SUPPORT ASSEM. - PEDAL (WELDED)

CHECKER MOTORS CORP. KALAMAZOO, MICH.

EFFECTIVE OCT 1, 1971

MODEL:	B-12	DATE	8-13-71
	B-12E		
	B-12W		
GRAPHIC ILLUSTRATION		DWN. DEKKER	SHEET NO. 74A-4
BRAKES - PEDAL SUPPORT - AUTO. TRANS.		CHK.	
APPVD.			

NO.	DESCRIPTION	DATE	CHANGES
1.	703998 SUPPORT ASM. - PEDAL (WELDED)		
2.	703997 PEDAL ASM. - BRAKE	9-15-71	114785 WAS 149763
3.	94430 SHAFT - BRAKE PEDAL	10-15-71	704052 WAS 706126
4.	120382 L.W. $\frac{3}{8}$ MED. SPRING (3)		
5.	120369 NUT $\frac{7}{8}$ 24 HEX. (5)		
6.	701935 RETAINER ASM. - STOP LIGHT SW. ERKT.		
7.	704052 BRACKET-MECH. STOP LIGHT SW		
8.	703923 SWITCH ASM - STOP LIGHT		
9.	626584 LOCKNUT $\frac{1}{2}$ -20 HEX. (E)		
10.	702508 BUSHING (2)		
11.	121022 COTTER PIN $\frac{3}{32}$ x $\frac{3}{4}$		
12.	120394 WASHER $\frac{1}{2}$ ID. x $\frac{1}{16}$ O.D.		
13.	114755 CLEVIS PIN $\frac{3}{8}$		
14.	120214 L.W. $\frac{3}{8}$ MED SPR. (E)		
15.	120376 NUT $\frac{3}{8}$ 18 HEX (L)		
16.	273513 SCR. L.W. ASM. 10-24 x $\frac{1}{2}$		
17.	178375 L.W. 10 INT. EXT.		
18.	703743 MOUNTING ASM. - FLASHER		
19.	446477 WASHER $\frac{7}{16}$ ID. x $\frac{1}{8}$ O.D.		
20.	703768 CYLINDER ASM. - POWER BRK.		



WHEN TEMPORARY  $\frac{3}{4}$  LG. CLEVIS PIN IS USE, OMIT WASHER 12

VIEW IN DIRECTION OF ARROW 'A'

