

CHECKER MOTORS CORP. KALAMAZOO, MICH.

EFFECTIVE OCT. 1, 1970

MODEL: A-12
A-11

DATE
1-16-70

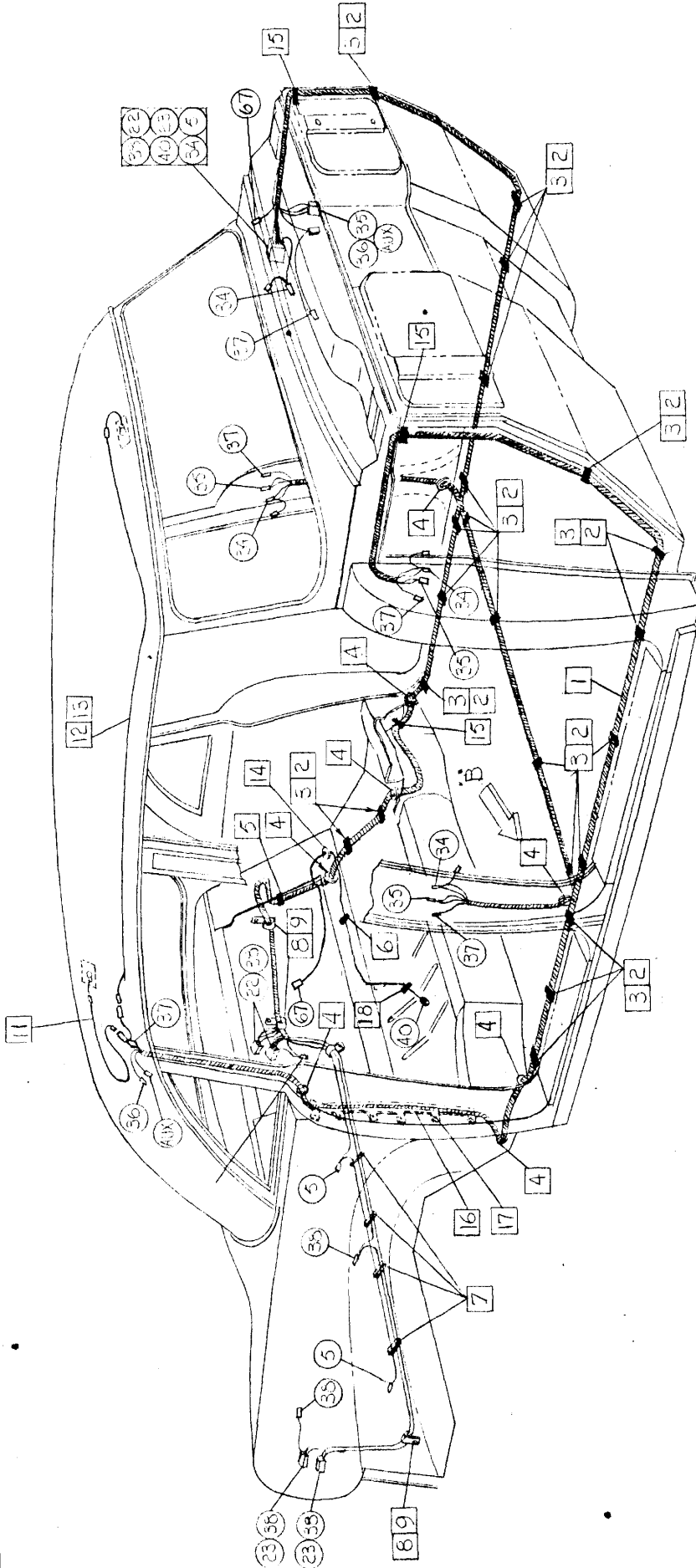
GRAPHIC ILLUSTRATION

BODY WIRING - HARNESS ROUTING

DWN. DRAWER
CHK. *[Signature]*

SHEET NO. 65 A-1

APPVD.



- | | | |
|---|-----------|--|
| ① | WHITE | BACK-UP LIGHTS |
| ② | TAN | LEFT TURN SIGNAL |
| ③ | LT. GREEN | RIGHT TURN SIGNAL |
| ④ | RED | FEEDER-DOOR + DOME LAMP SWITCHES |
| ⑤ | YELLOW | DRIVERS DOME LAMP |
| ⑥ | DK. BLUE | TAIL + LICENSE LAMP + SIDE MARKER LIGHTS |
| ⑦ | BROWN | REAR WINDOW DEFOGGER |
| ⑧ | ORANGE | FUEL TANK GAGE |
| ⑨ | BLACK | TELL TALE LIGHT |
| ⑩ | LT. BLUE | ROOF LAMP |
| ⑪ | DK. BLUE | AUX. |

FOR PART NO. SEE

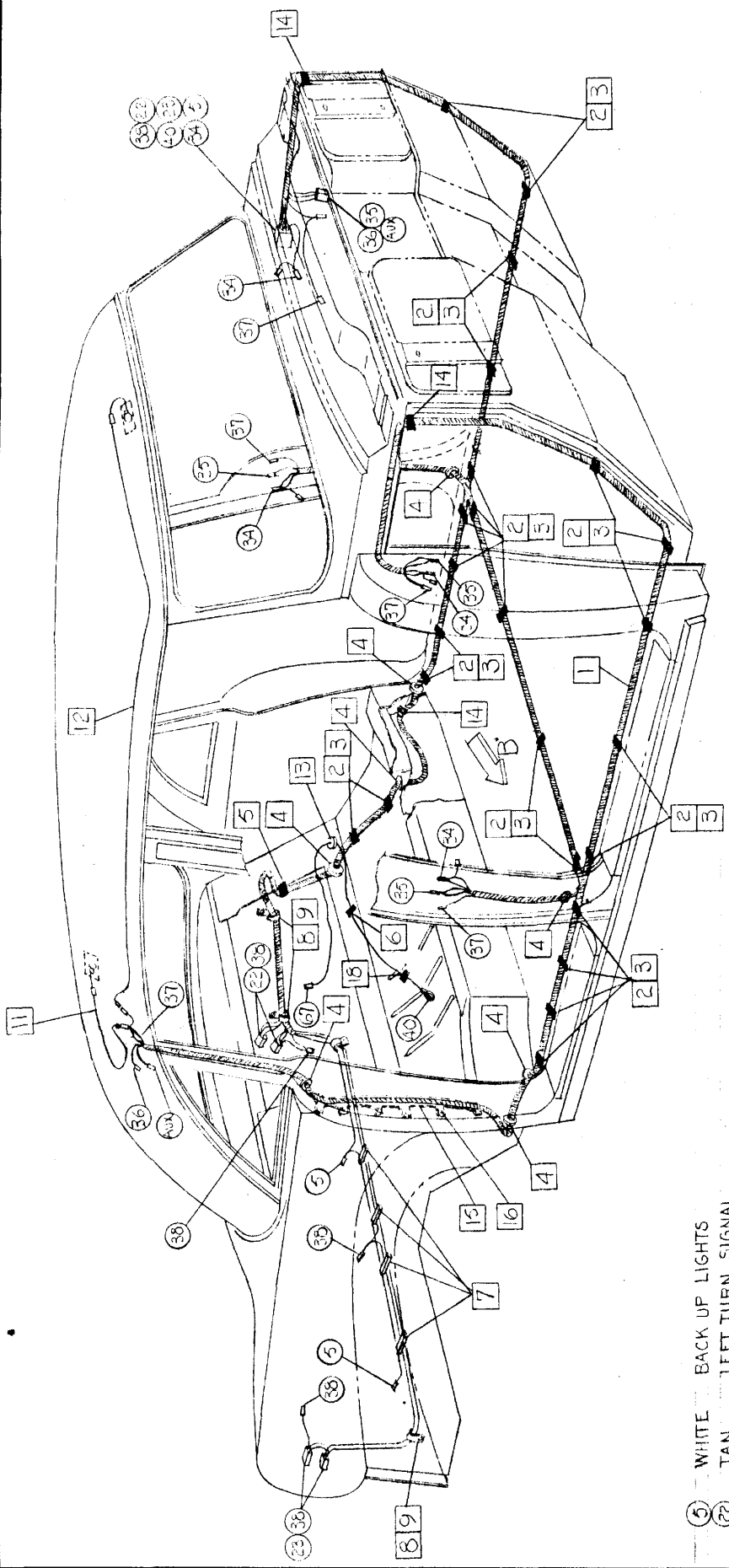
G.I. 65 A-2

USED ONLY WITH
A-11 MODEL

CHECKER MOTORS CORP. KALAMAZOO, MICH.

EFFECTIVE OCT 1, 1970

MODEL: A-11E	DATE 1-22-70	GRAPHIC ILLUSTRATION BODY WIRING - HARNESS ROUTING	DWN. D <small>ENVER</small> CHK. <i>[Signature]</i>	SHEET NO. 65 A-3
			APPVD.	



- ① WHITE BACK UP LIGHTS
- ② TAN LEFT TURN SIGNAL
- ③ LT. GREEN RIGHT TURN SIGNAL
- ④ RED FEEDER - DOOR + DOME LAMP SWITCHES
- ⑤ YELLOW DRIVERS DOME LIGHT
- ⑥ DK. BLUE TAIL + LICENSE LAMP + SIDE MARKER LIGHTS
- ⑦ BROWN REAR WINDGW DEFOSGER
- ⑧ ORANGE FUEL TANK GAGE
- ⑨ BLACK TELL TALE LIGHT } USED ONLY WITH
- ⑩ LT. BLUE ROOF LAMP } A-11 MODEL
- ⑪ DK. BLUE AUX.

FOR PART NO. SEE G.I. 65 A-4

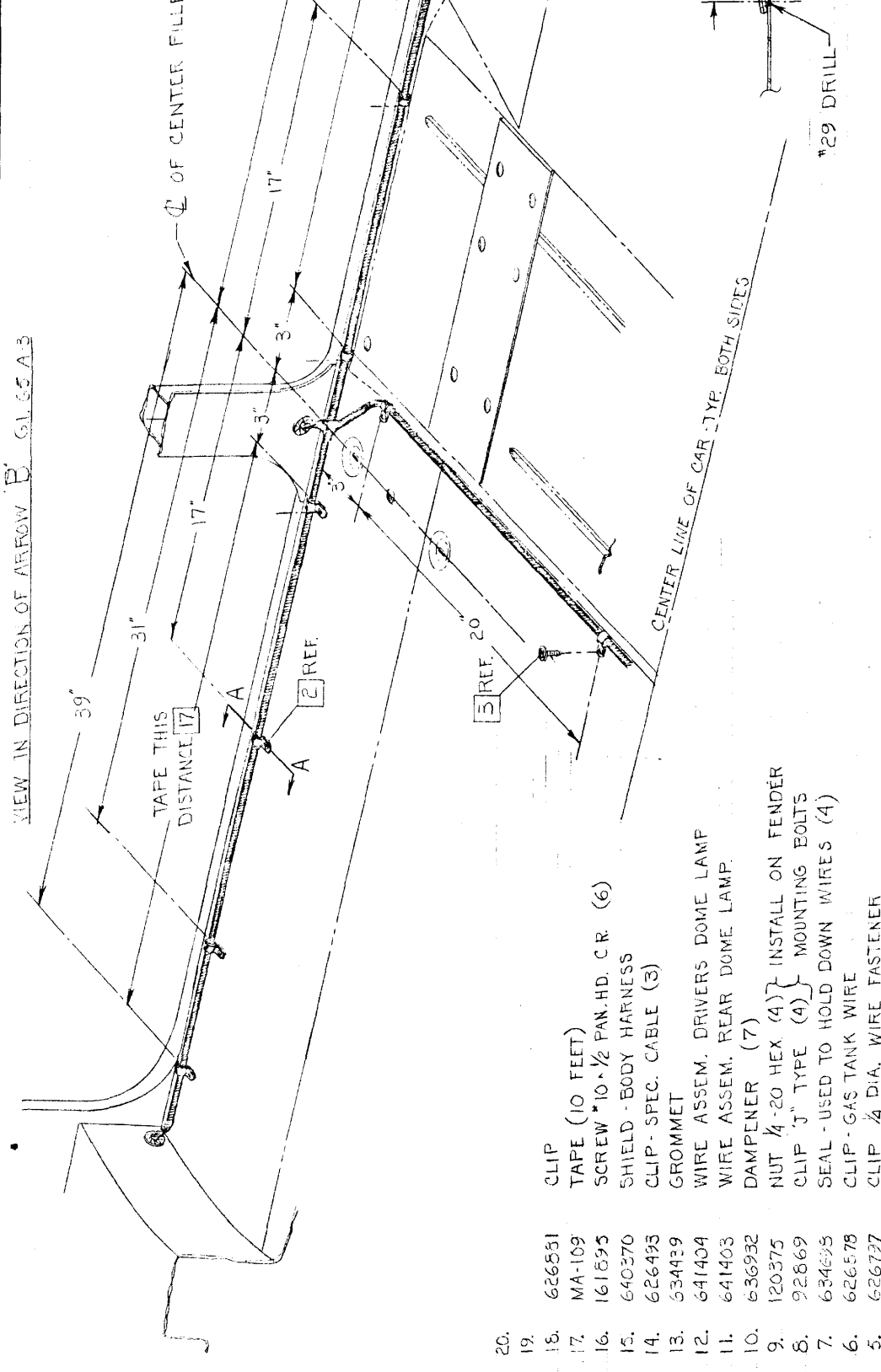
CHECKER MOTORS CORP. KALAMAZOO, MICH.

EFFECTIVE OCT 1, 1970

MODEL: A-11E	DATE 1-22-70	DWN. DESKBY CHK. <i>[Signature]</i>	SHEET NO. 65 A-4
GRAPHIC ILLUSTRATION		APPVD.	
BODY WIRING - HARNESS ROUTING			

VIEW IN DIRECTION OF ARROW B 6165A3

CHANGES	
2-20-70	3/4" DIA. WAS 31"
12-23-70	626578 WAS 626757
4-13-71	624561 WAS 626878
~	647029 + 626136. Added
9-23-71	626657 WAS 626136
7-7-72	647970 WAS 647030 FRF
~	MEMO # 313 FRF. FEB 1972
8-21-72	626687, 647029 REMOVED



- 20. CLIP (10 FEET)
- 19. TAPE *10 * 1/2 PAN. HD. C.R. (6)
- 18. SHIELD - BODY HARNESS
- 17. CLIP - SPEC. CABLE (3)
- 16. GROMMET
- 15. WIRE ASSEM. DRIVERS DOME LAMP
- 14. WIRE ASSEM. REAR DOME LAMP.
- 13. DAMPENER (7)
- 12. NUT 1/4-20 HEX (4) } INSTALL ON FENDER
- 11. CLIP 'J' TYPE (4) } MOUNTING BOLTS
- 10. SEAL - USED TO HOLD DOWN WIRES (4)
- 9. CLIP - GAS TANK WIRE
- 8. CLIP 1/4 DIA. WIRE FASTENER
- 7. BUSHING (8) A-11E ; (3) A-12E
- 6. SCREW + WASHER ASSEM. * 8 * 3/4 (24)
- 5. CLAMP - NYLON (24)
- 4. HARNESS ASSEM. - BODY WIRING 129" W.B.

SECTION A-A
(TYP.)

EFFECTIVE OCT. 1, 1970

CHECKER MOTORS CORP. KALAMAZOO, MICH.

SHEET NO. 65 A-5

DWN. DECKER
CHK. R.S.S.

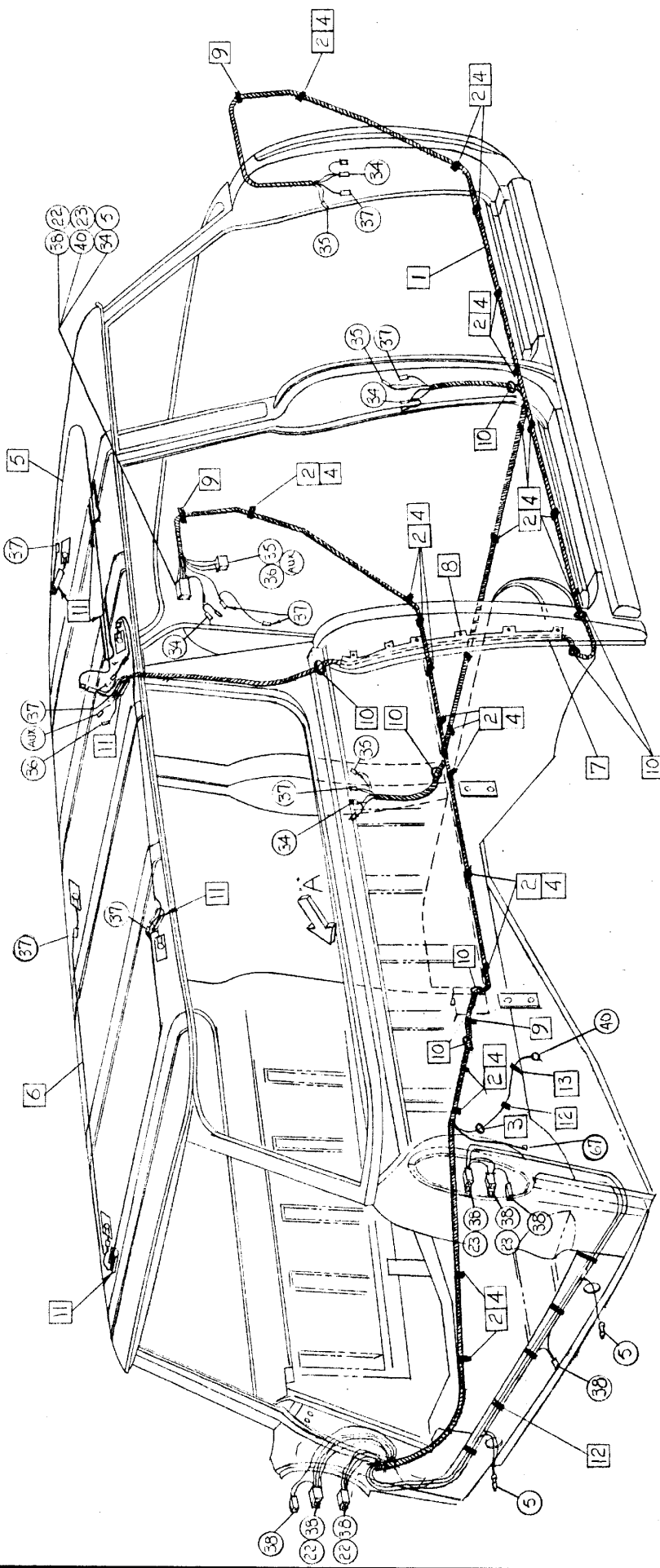
GRAPHIC ILLUSTRATION

DATE
6-4-69

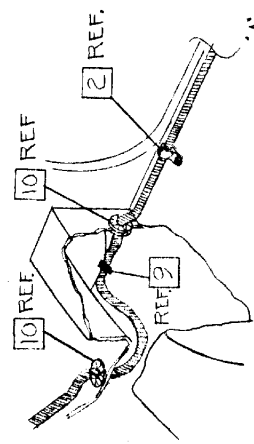
MODEL: A-12W BODY

BODY WIRING - HARNESS ROUTING - WAGON

APPVD.



- ① WHITE BACK-UP LIGHTS
- ② TAN LEFT TURN SIGNAL
- ③ LT. GREEN RIGHT TURN SIGNAL
- ④ RED FEEDER - DOOR / DOME LAMP SWITCHES
- ⑤ YELLOW DRIVERS DOME LAMP
- ⑥ DK. BLUE TAIL / LICENSE LAMP + SIDE MARK LIGHT
- ⑦ BROWN REAR WINDOW DEFOGGER - NOT USED
- ⑧ ORANGE FUEL TANK GAUGE
- ⑨ BLACK TELL TALE LIGHT
- ⑩ LT. BLUE ROOF LAMP
- ⑪ D. BLUE AUX.



FOR PART NO's SEE
G.I. 65 A-7

CHECKER MOTORS CORP. KALAMAZOO, MICH.

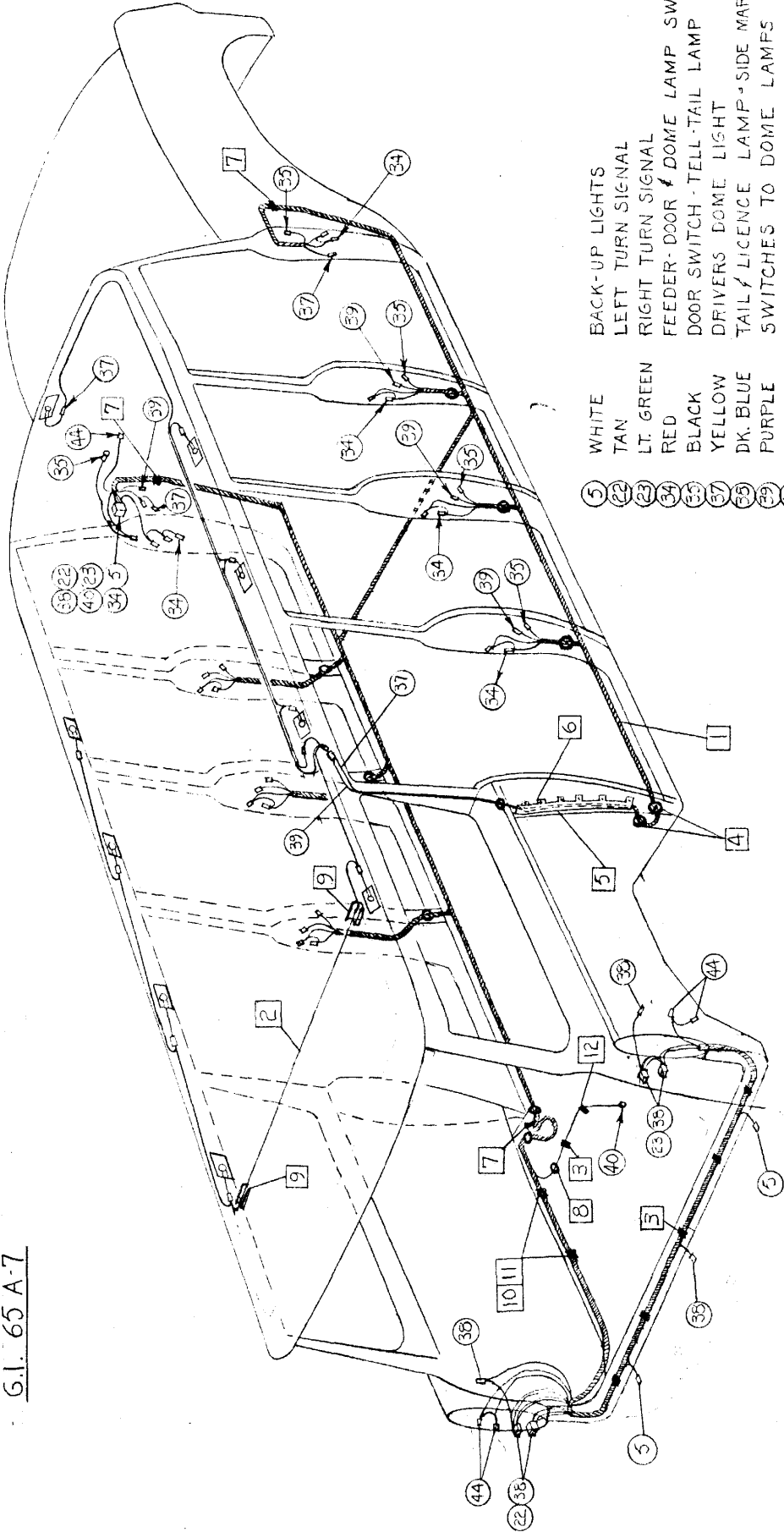
EFFECTIVE OCT 1, 1970

DWN. *[Signature]*
 CHK. *[Signature]*
 SHEET NO. 65 A-6

MODEL: A-12W8
 DATE: 1-26-70
 GRAPHIC ILLUSTRATION
 BODY WIRING - HARNESS ROUTING

APPVD. *[Signature]*

FOR PART NO'S SEE
G.I. 65 A-7



- (5) WHITE
- (22) TAN
- (23) LT. GREEN
- (34) RED
- (35) BLACK
- (37) YELLOW
- (39) DK. BLUE
- (40) PURPLE
- (44) ORANGE

- BACK-UP LIGHTS
- LEFT TURN SIGNAL
- RIGHT TURN SIGNAL
- FEEDER-DOOR / DOME LAMP SWITCHES
- DOOR SWITCH - TELL-TAIL LAMP
- DRIVERS DOME LIGHT
- TAIL / LICENCE LAMP - SIDE MARKER
- SWITCHES TO DOME LAMPS
- FUEL TANK GAUGE
- DK. GREEN CLASS 'A' LURN SIGNAL LAMPS
- WHEN USED.

EFFECTIVE OCT. 1, 1970

CHECKER MOTORS CORP. KALAMAZOO, MICH.

SHEET NO. 65 A-7

DWN. DEKSEE
CHK. J.P.J. 4-21-71

APPVD.

GRAPHIC ILLUSTRATION
BODY WIRING - HARNESS ROUTING

MODEL: A-12W8
A-12W

DATE
4-21-71

PART NO's FOR G.I. 65 A-6

PART NO's FOR G.I. 65 A-5

1. HARNESS ASM. - BODY WIRING
2. WIRE ASM. - DOME + COURTESY LIGHTS
3. CLIP - WIRING FASTENER (6)
4. BUSHING (11)
5. SHIELD - BODY HARNESS
6. SCREW *10 * 1/2 PHCR (6)
7. CLIP - SPEC. CABLE (3)
8. GROMMET
9. DAMPENER (2)
10. CLAMP - NYLON (2)
11. SCREW + WASHER ASM. *8 * 3/4 (2)
12. CLIP
- 13.
- 14.

1. HARNESS ASM. - BODY WIRING
2. CLAMP - NYLON (22)
3. GROMMET
4. SCREW + WASHER ASM. *8 * 3/4 (22)
5. WIRE ASM. - DRIVERS DOME LIGHT
6. WIRE ASM. - REAR DOME LIGHTS
7. SHIELD - BODY HARNESS
8. SCREW *10 * 1/2 PHCR (6)
9. CLIP - SPEC. CABLE (3)
10. BUSHING (7)
11. DAMPENER - ROOF VIBRATION (6)
12. CLIP - WIRE FASTENER (6)
13. CLIP
- 14.
- 15.

8-21-72	626567, 647029	REMOVED
9-23-71	626567	WAS 626136
~	647029 + 626136	ADDED
4-20-71	626561	WAS 626575
12-13-70	626575	WAS 626757
CHANGE'S		

8-21-72	626567, 647029	REMOVED
7-7-72	647929	WAS 647020 PER MEMO # 313
9-23-71	626567	WAS 626136
~	647029 + 626136	ADDED
4-20-71	626561	WAS 626575
12-23	626575	WAS 626757
CHANGE'S		