

CHECKER MOTORS CORP. KALAMAZOO, MICH.

EFFECTIVE OCT 1, 1970

MODEL: B-12
B-11

DATE: 6-1-70

GRAPHIC ILLUSTRATION
BODY MOUNTING

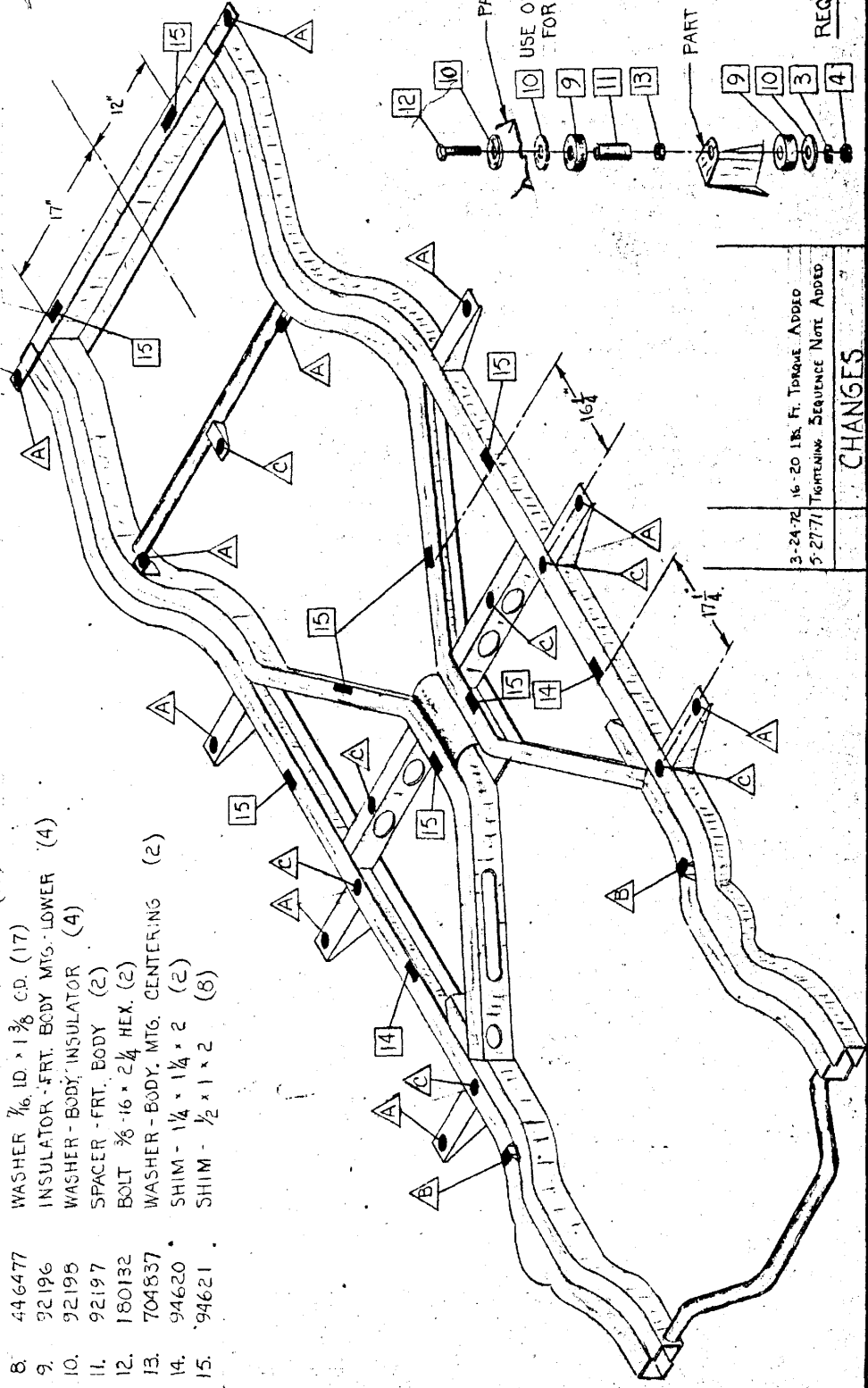
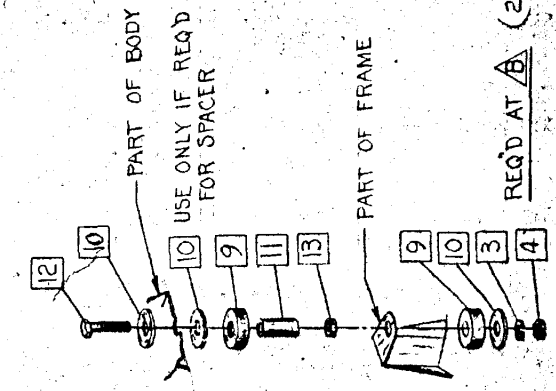
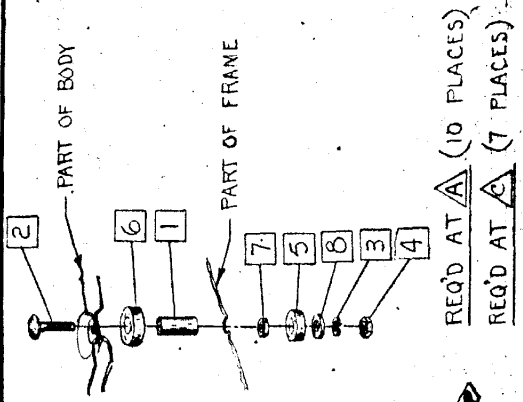
SHEET NO. 60 A-1

DWN. DEKKER
CHK. RCB-B-70

APPVD.

1. 94550 SPACER - SQ. BODY BOLT (17)
2. 94570 BOLT $\frac{3}{8}$ -16 - 2 $\frac{1}{2}$ IN STEP (17)
3. 120382 L.W. $\frac{3}{8}$ MED. SPRING (19)
4. 120377 NUT $\frac{3}{8}$ -16 HEX. (19)
5. 702417 INSULATOR - BODY - LOWER (17)
6. 702416 INSULATOR - BODY - UPPER (17)
7. 702415 WASHER - BODY MTG. CENTERING (17)
8. 446477 WASHER $\frac{7}{16}$ ID. x $1\frac{3}{8}$ CD. (17)
9. 92196 INSULATOR - FRT. BODY MTG. LOWER (4)
10. 92195 WASHER - BODY; INSULATOR (4)
11. 92197 SPACER - FRT. BODY (2)
12. 180132 BOLT $\frac{3}{8}$ -16 x $2\frac{1}{4}$ HEX. (2)
13. 704837 WASHER - BODY, MTG. CENTERING (2)
14. 94620 SHIM - $1\frac{1}{4}$ x $1\frac{1}{4}$ x 2 (2)
15. 94621 SHIM - $\frac{1}{2}$ x 1 x 2 (8)

NOTE:
TIGHTEN Δ POSITIONS FIRST, STARTING AT FRONT
TIGHTEN \square POSITIONS SECOND, USING SPACERS \square AS REQ'D.
TIGHTEN \triangle POSITIONS LAST
TIGHTEN ALL BODY MTG. NUTS TO 16-20 LBS. FT. TORQUE



3-24-72 16-20 LBS. FT. TORQUE ADDED
5-27-71 TIGHTENING SEQUENCE NOTE ADDED

CHANGES

SK-2193

CHECKER MOTORS CORP. KALAMAZOO, MICH.

EFFECTIVE OCT. 1, 1970

GRAPHIC ILLUSTRATION

DWN. DEKKER

SHEET NO. 60 A-2

DATE

6-8-70

MODEL:

B-11E

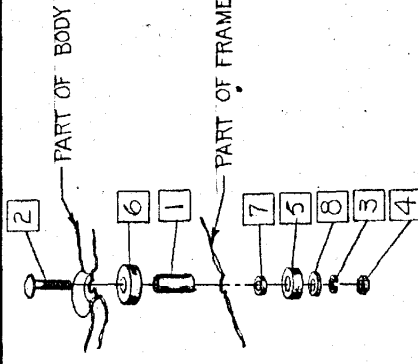
E-12E

APPVD.

- 1. SPACER - SQ. BODY BOLT (23)
- 2. BOLT $\frac{3}{8}$ -16 x 2 1/2 IN STEP (23)
- 3. L.W. $\frac{3}{8}$ MED. SPRING (25)
- 4. NUT $\frac{3}{8}$ -16 HEX. (25)
- 5. INSULATOR - BODY - LOWER (27)
- 6. INSULATOR - BODY - UPPER (23)
- 7. WASHER - BODY MTG. CENTERING (23)
- 8. WASHER $\frac{7}{16}$ I.D. x $1\frac{1}{8}$ O.D. (23)
- 9. INSULATOR - FRT. BODY MTG. - LOWER (4)
- 10. WASHER - BODY INSUL. (4)
- 11. SPACER - FRT. BODY (2)
- 12. BOLT $\frac{3}{8}$ -16 x 2 1/4 HEX. (2)
- 13. WASHER - BODY MTG. CENTERING (2)
- 14. SHIM $1\frac{1}{4}$ x $1\frac{1}{4}$ x 2 (2)
- 15. SHIM $\frac{1}{2}$ x $1\frac{1}{2}$ x 2 (4)

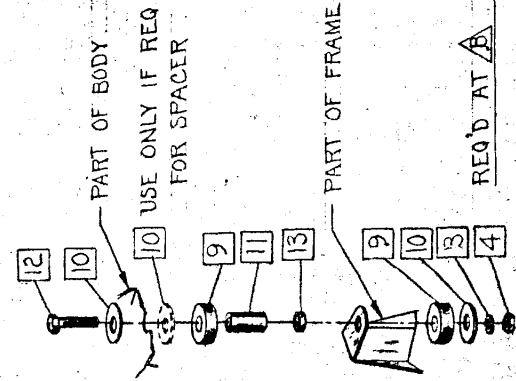
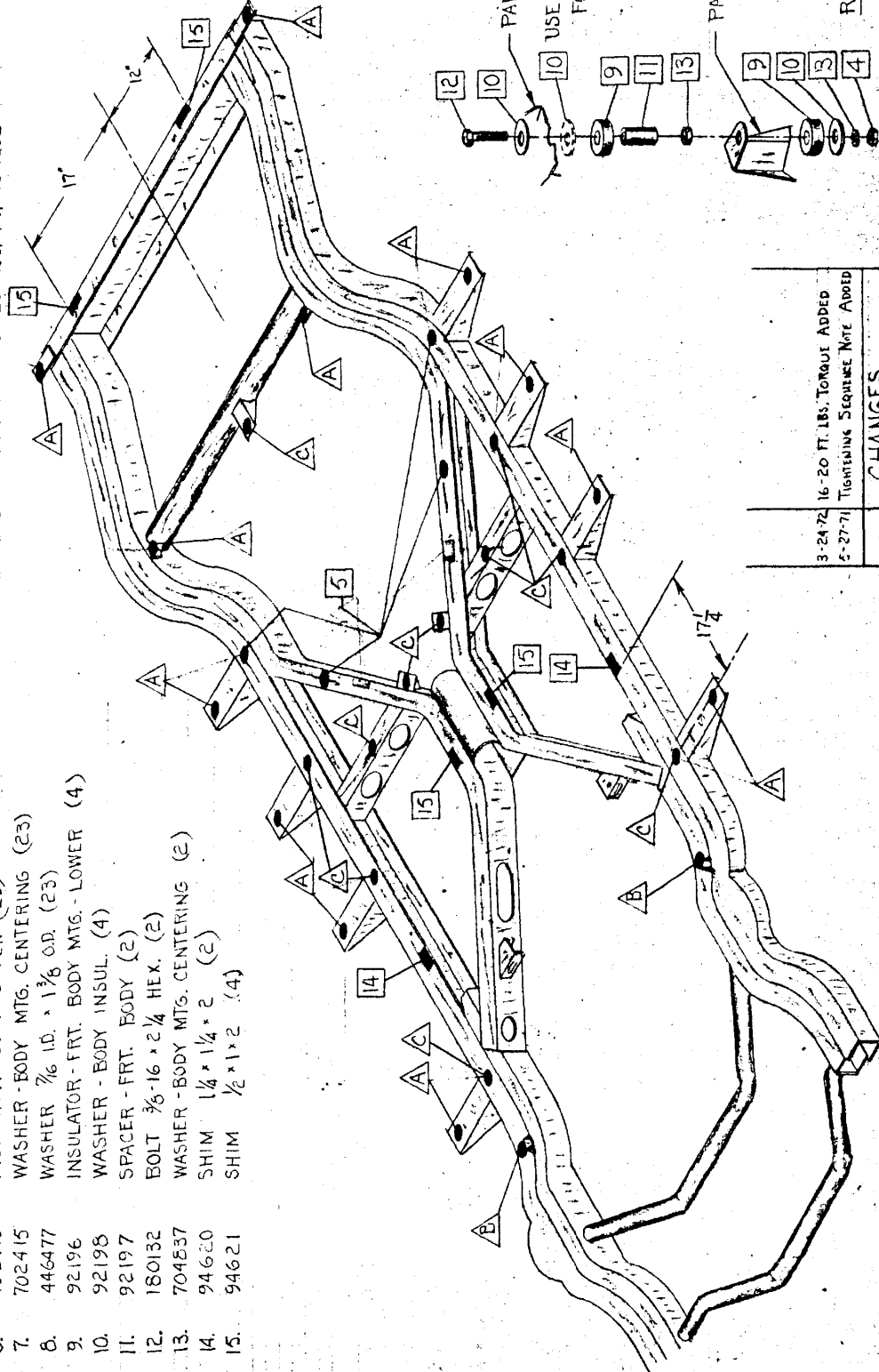
NOTE:

- TIGHTEN Δ POSITIONS FIRST, STARTING AT FRONT
- TIGHTEN Δ POSITIONS SECOND, USING SPACERS \square AS REQ'D
- TIGHTEN Δ POSITIONS LAST.
- TIGHTEN ALL BODY MTG. NUTS TO 16-20 LBS. FT. TORQUE



REQ'D AT Δ (12 PLACES)

REQ'D AT Δ (111 PLACES)



REQ'D AT Δ (2 PLACES)

3-24-72 16-20 FT. LBS. TORQUE ADDED
2-27-71 TIGHTENING SEQUENCE NOTE ADDED

CHANGES

SK 2588

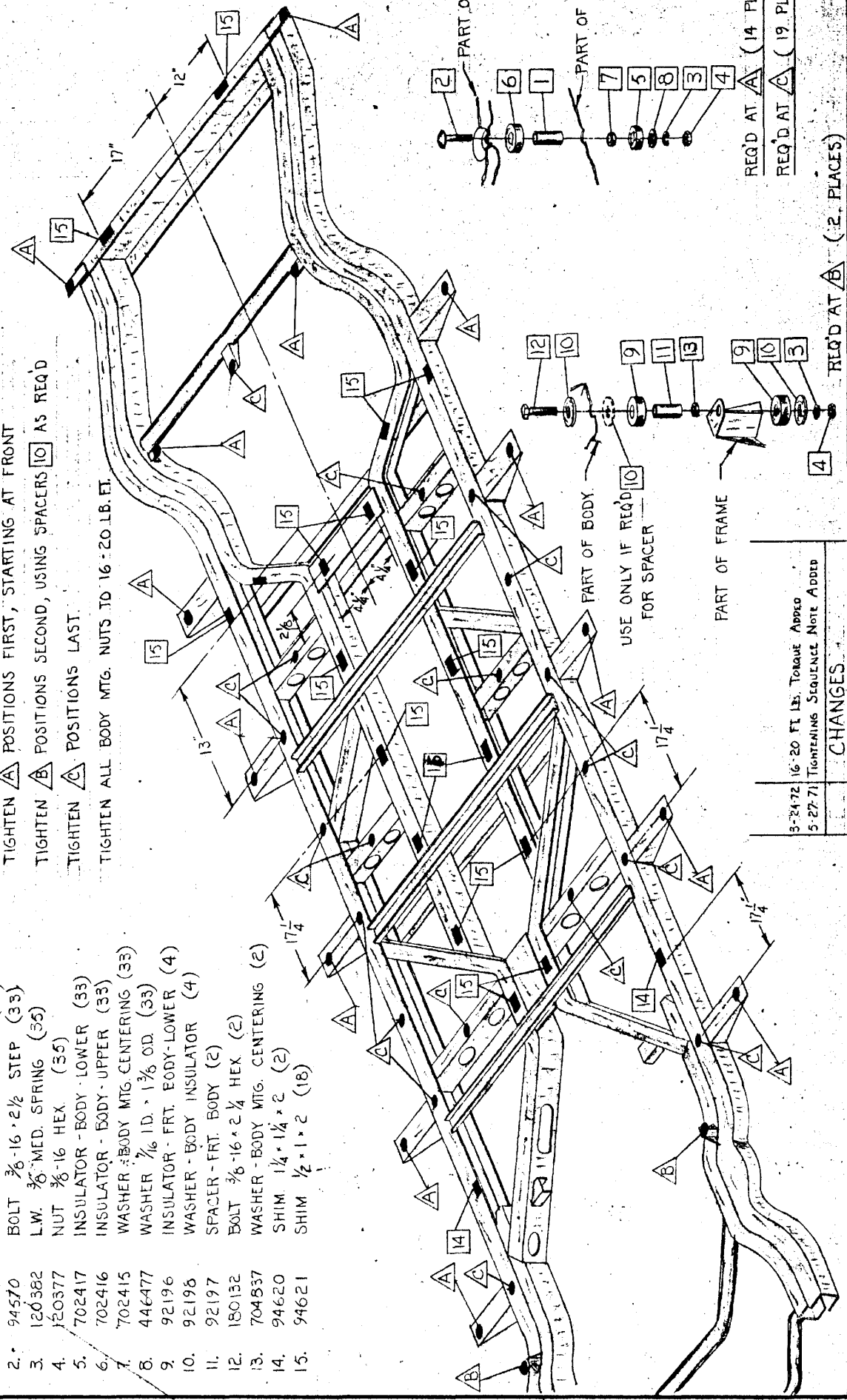
CHECKER MOTORS CORP. KALAMAZOO, MICH.

EFFECTIVE OCT. 1, 1970

MODEL:	B-12W 8	DATE	6-9-70
GRAPHIC ILLUSTRATION		DWN. DEKKEE	SHEET NO. 60 A-3
BODY MOUNTING		CHK. 8-18-70	APPVD.

1. 94550 SPACER - SQ. BODY BOLT (33)
2. 94570 BOLT $\frac{3}{8}$ -16 x 2 1/2 STEP (33)
3. 120382 L.W. $\frac{3}{8}$ MED. SPRING (35)
4. 120377 NUT $\frac{3}{8}$ -16 HEX (35)
5. 702417 INSULATOR - BODY - LOWER (33)
6. 702416 INSULATOR - BODY - UPPER (33)
7. 702415 WASHER - BODY MTG. CENTERING (33)
8. 446477 WASHER $\frac{1}{16}$ ID. x $1\frac{3}{8}$ OD. (33)
9. 92196 INSULATOR - FRT. BODY-LOWER (4)
10. 92195 WASHER - BODY INSULATOR (4)
11. 92197 SPACER - FRT. BODY (2)
12. 180132 BOLT $\frac{3}{8}$ -16 x 2 1/4 HEX (2)
13. 704537 WASHER - BODY MTG. CENTERING (2)
14. 94620 SHIM $1\frac{1}{4}$ x $1\frac{1}{4}$ x 2 (2)
15. 94621 SHIM $\frac{1}{2}$ x 1 x 2 (18)

NOTE:
 TIGHTEN Δ POSITIONS FIRST, STARTING AT FRONT
 TIGHTEN ∇ POSITIONS SECOND, USING SPACERS \square AS REQ'D
 TIGHTEN \triangle POSITIONS LAST.
 TIGHTEN ALL BODY MTG. NUTS TO 16-20 LB. FT.



3-24-72	16-20 FT. LB. TORQUE ADDED
5-27-71	TIGHTENING SEQUENCE NOTE ADDED
CHANGES	