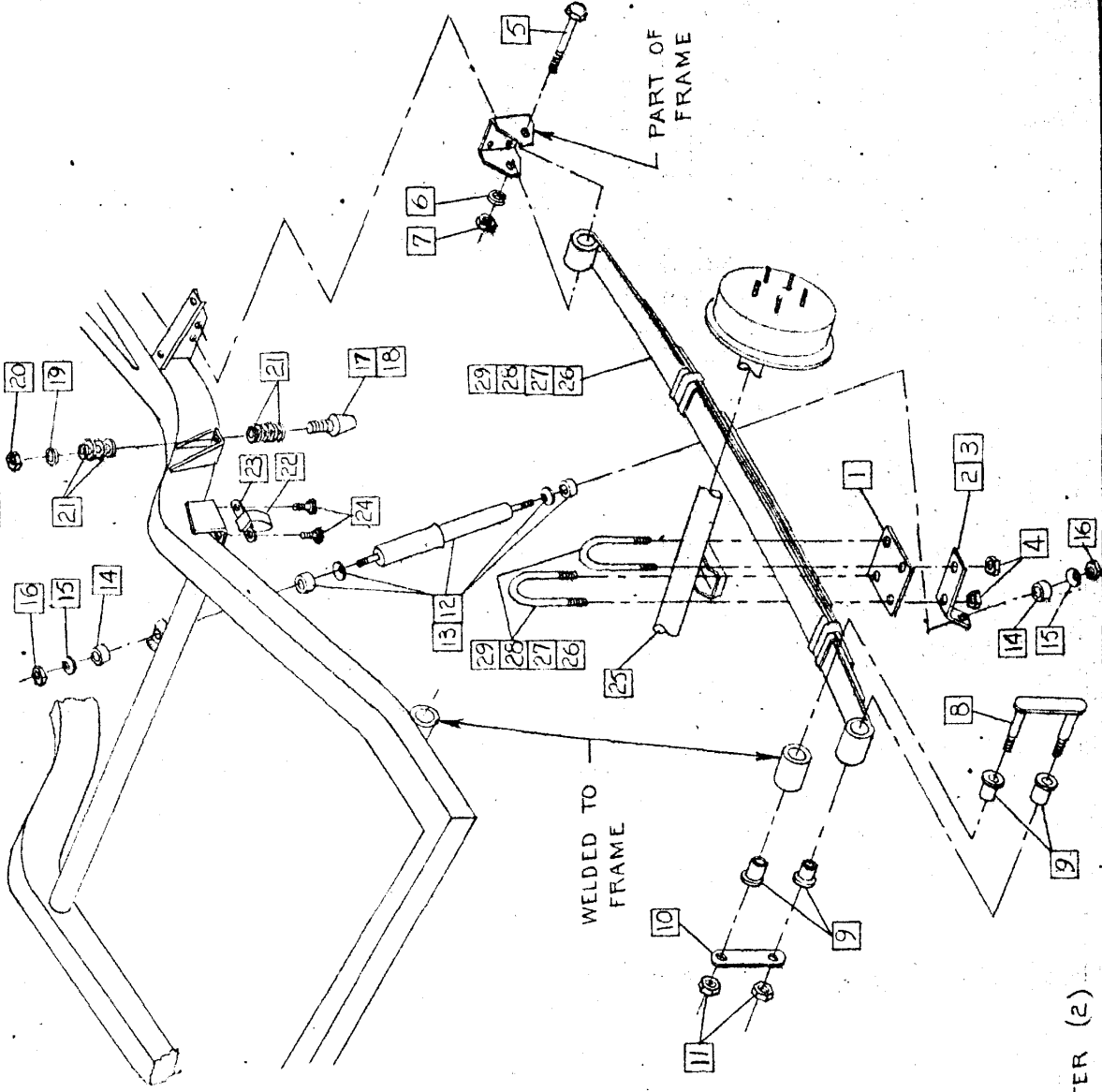


MODEL:	DATE
B-11 B-11E	1-10-69
B-12 B-12E	
B-12W	

APPVD.



- | | | |
|-----|--------|--|
| 1. | 98300 | PLATE - REAR SPRING (2) |
| 2. | 98301 | BRACKET - LOWER L.H. |
| 3. | 98302 | BRACKET - LOWER R.H. |
| 4. | 65196 | NUT - SPRING CLIP (5) |
| 5. | 271758 | BOLT $\frac{5}{8}$ -18 x 4 1/2 HEX. (2) |
| 6. | 121574 | L.W. $\frac{7}{8}$ MED. SPRING (2) |
| 7. | 121358 | NUT $\frac{7}{8}$ -18 HEX. (2) |
| 8. | 95634 | PLATE + PIN ASSEM. (2) |
| 9. | 96153 | BUSHING (8) |
| 10. | 80768 | PLATE (2) |
| 11. | 443340 | NUT 1/2-20 HEX. (4) |
| 12. | 701963 | SHOCK ABSORBER ASSEM. - STD. (2) |
| 13. | 701974 | SHOCK ABSORBER ASSEM. - H.D. (2) |
| 14. | 704142 | INSULATOR (4) |
| 15. | 94406 | WASHER (4) |
| 16. | 442626 | NUT $\frac{3}{8}$ -24 HEX. (4) |
| 17. | 701015 | BUMPER ASSEM. (2) |
| 18. | 92289 | BUMPER ASSEM. (2) B-11E, B-12E ONLY |
| 19. | 120382 | L.W. $\frac{3}{8}$ MED. SPR. (2) |
| 20. | 120369 | NUT $\frac{3}{8}$ -24 HEX. (2) |
| 21. | 446477 | WASHER $\frac{7}{16}$ I.D. x 1 3/8 O.D. (30) |
| 22. | 702356 | BUMPER - REAR AXLE (2) |
| 23. | 702354 | CLIP - (2) |
| 24. | 448665 | SCREW $\frac{5}{16}$ -18 HEX. HD. (4) |
| 25. | 703355 | AXLE ASSEM. 3.31:1 |
| | 703356 | AXLE ASSEM. 3.31:1 PWR. LOCK |
| | 703357 | AXLE ASSEM. 3.54:1 |
| | 703358 | AXLE ASSEM. 3.54:1 PWR. LOCK |
| 26. | 97039 | SPRING ASSEM. (2) B-11, B-11E, B-12E |
| | 98308 | CLIP - INNER (2) |
| | 704569 | CLIP - OUTER (2) |
| 27. | 97364 | SPRING ASSEM. (2) B-12 |
| | 98308 | CLIP - INNER (2) |
| | 704569 | CLIP - OUTER (2) |
| | 701444 | SPRING ASSEM. (2) B-12 W |
| 28. | 98308 | CLIP - INNER (2) |
| | 704569 | CLIP - OUTER (2) |
| 29. | 703000 | SPRING ASSEM H.D. (2) |
| | 98326 | CLIP - INNER (2) 704572 CLIP - OUTER (2) |

EFFECTIVE JAN 1, 1965

CHECKER MOTORS CORP., KALAMAZOO, MICH.
GRAPHIC ILLUSTRATION

736

SHEET NO.

DRW. DENVER

CMK

APPRO

DATE

1-27-65

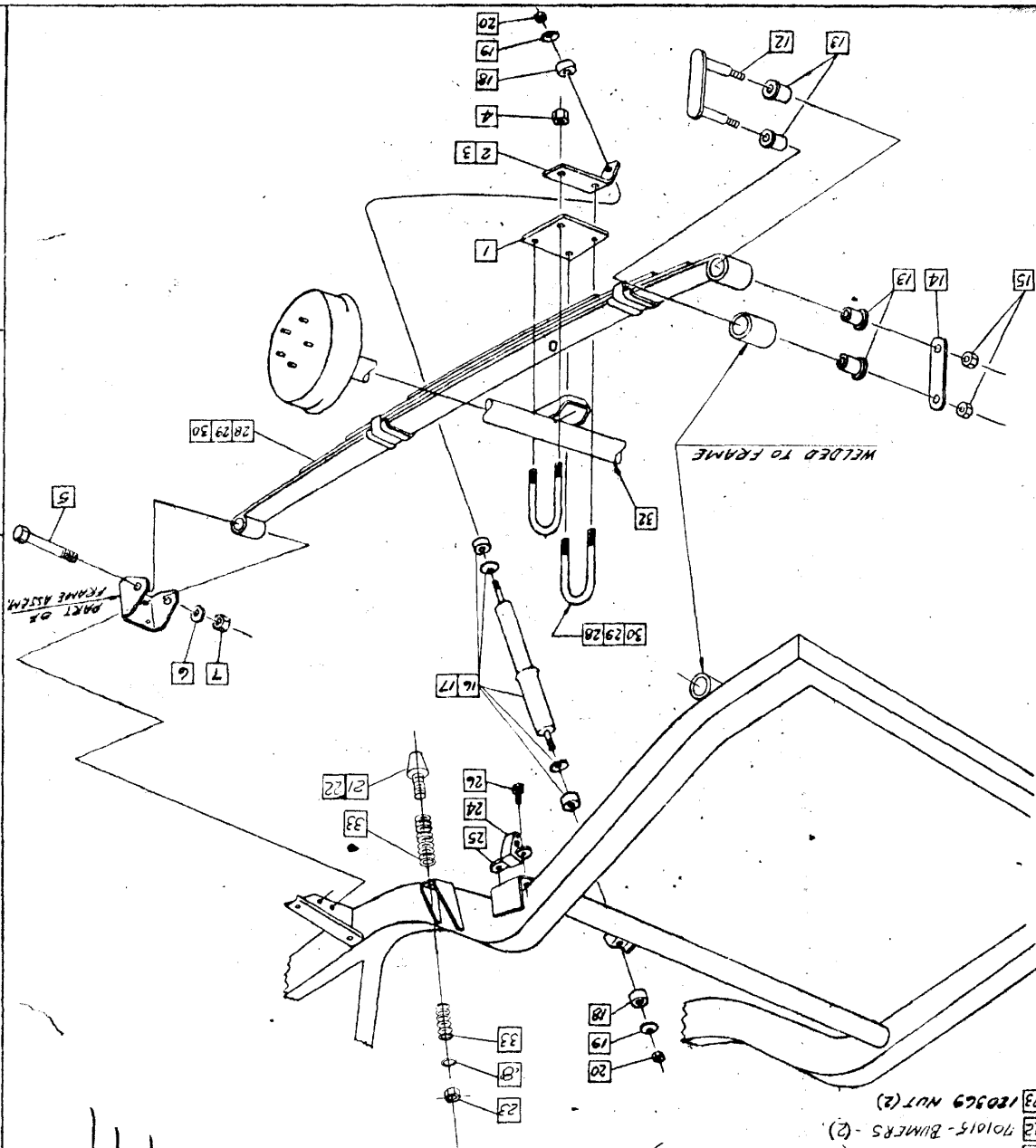
MODEL

B-11 B-12W B-11E CHASSIS

ALSO APPLIES TO

B-12 B-12E B-12W B-12E

REAR SUSPENSION



OBSOLETE
SEE 736-A

- 1 98300 PLATE (2)
- 2 98301 BKLT.-L.H.
- 3 98302 BKLT.-R.H.
- 4 65198 NUT (8)
- 5 271758 BOLT(2)
- 6 121574 L.W.(2)
- 7 121858 NUT (2)
- 8 120382 L.W.(2)
- 9
- 10
- 11
- 12 95634 - PLATE & PIN(2)
- 13 96153 BUSHING(2)
- 14 80768 PLATE(2)
- 15 443340 NUT(4)
- 16 701963 SHOCK ASS.-REG.(2)
- 17 701974 SHOCK ASS.-H.D.(2)
- 18 709192 INSULATOR(4)
- 19 94408 WASHER(4)
- 20 442828 NUT(4)
- 21 92289 BUMBERS (B-11E & B-12E ONLY)
- 22 701015 - BUMBERS - (2)
- 23 120369 NUT (2)
- 24 97039 SPRING(2) (STD. B-12W/B-12E)
- 25 98308 CLIP(4)
- 26 171104 SCREW(4)
- 27
- 28 97039 SPRING(2) (STD. B-11E/B-12E/B-12W/B-12E)
- 29 703000 SPRING(2) (H.D. B-11E/B-12E/B-12W/B-12E)
- 30 98326 - CLIP(2)
- 31 98308 CLIP(4)
- 32 97310 - 97317 REAR AXLE
- 33 446477 L.W.(30) B-11E & B-12E ONLY

WELDED TO FRAME

DRKT. OR FRAME ASSEM.