

CHECKER MOTORS CORP. KALAMAZOO, MICH.

EFFECTIVE PER MEMO # 219

MODEL:

B-12W6
B-12W8

DATE

2-18-69

GRAPHIC ILLUSTRATION

CRANKCASE VENT. - AEROBUS

DWN. DEKKER
CHK. G. K. B.

SHEET NO.

563-A

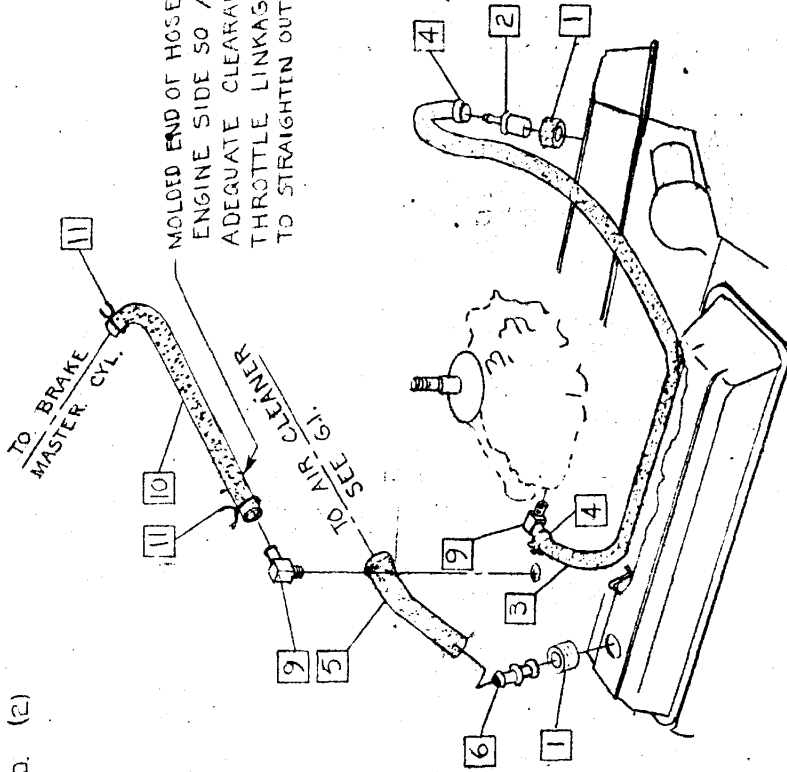
APPVD.

- 1. 704146 GROMMET - C/C VENT. (2)
- 2. 703296 VALVE ASSIM. HOSE
- 3. 704268 CLAMP C/C VENT HOSE - 3/8 I.D. (2)
- 4. 702104 HOSE
- 5. 704432 CONNECTOR
- 6. 704528
- 7.
- 8.
- 9. 704350 CONNECTOR - (2)
- 10. 704658 HOSE
- 11. 272846 CLAMP (2)

CHANGES

27-69 704658 WAS 704445

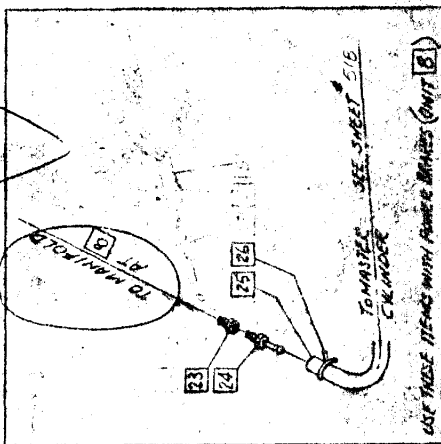
MOLDED END OF HOSE TO BE AT ENGINE SIDE SO AS TO PROVIDE ADEQUATE CLEARANCE WITH THROTTLE LINKAGE (HOSE TENDS TO STRAIGHTEN OUT IN INSTALLED POSITION)



REVISED: 10-13-64/11-5-64/12-3-64/2-11-64/6-2-65/6-10-65/8-12-65/11-11-66/12-1-66/1-15-66

MODEL B-11 MICHAELIS **DATE** 10-2-64
APPLICABLE B-12 **MANUFACTURING** OIL BATH
CHECKER MOTOROS CORP. KALAMAZOO, MICH. **SHEET No.** 563
 1965

- 1 701576 - AIR CLEANER - OIL BATH
- 2 126177 - WING NUT
- 3 702284 - GASKET
- 4 702104 - CLAMP (2)
- 5 702088 - HOSE
- 6 124925 - NUT (2)
- 7 702112 - GASKET
- 8 PLUG - FURN WITH ENGINE
- 9 8414204 SCREEN (2)
- 10 701205 - THERMOSTAT & CONE ASSEM.
- 11 702266 - ROD
- 12 702267 - CLIP
- 13 701392 - VALVE ASSEM.
- 14 702396 - GEOMET
- 15 701575 - STUD ASSEM.
- 16 702389 - CONNECTOR
- 17 702809 - HOSE
- 18 702535 - GEOMET
- 19 701539 - CARBURETOR
- 20
- 21 702478 - CONNECTOR
- 22 120380 - LAMP (2)
- 23 444028 - BUSHING
- 24 702375 - CONNECTOR
- 25 702971 - HOSE
- 26 272846 - CLAMP
- 27 701577 - SIRENE & TUBE ASSEM.
- 28
- 29
- 30 702518 - STICKER



ATTENTION

CLEANING INSTRUCTIONS
 CRANKCASE VENT. - 6 OYL. WITH OIL BATH
 A/R CLEANER

3-4 LBS. FT.
 17-25 LBS. FT.

USE WITH POWER BOARES

USE WITH POWER BOARES

SEE SHEET 516

USE THESE ITEMS WITH POWER BRUSHES (UNIT 8)