

CHECKER MOTORS CORP. KALAMAZOO, MICH.

EFFECTIVE SEPT. 1, 1969

SHEET NO. 545-A

DWN. DENVER
CHK. H.C.

MODEL YEAR 1969
APPVD.

GRAPHIC ILLUSTRATION

ELECTRICAL - CLIPS & HARNESS ROUTING - ENG. CONF. - 6 CYL.

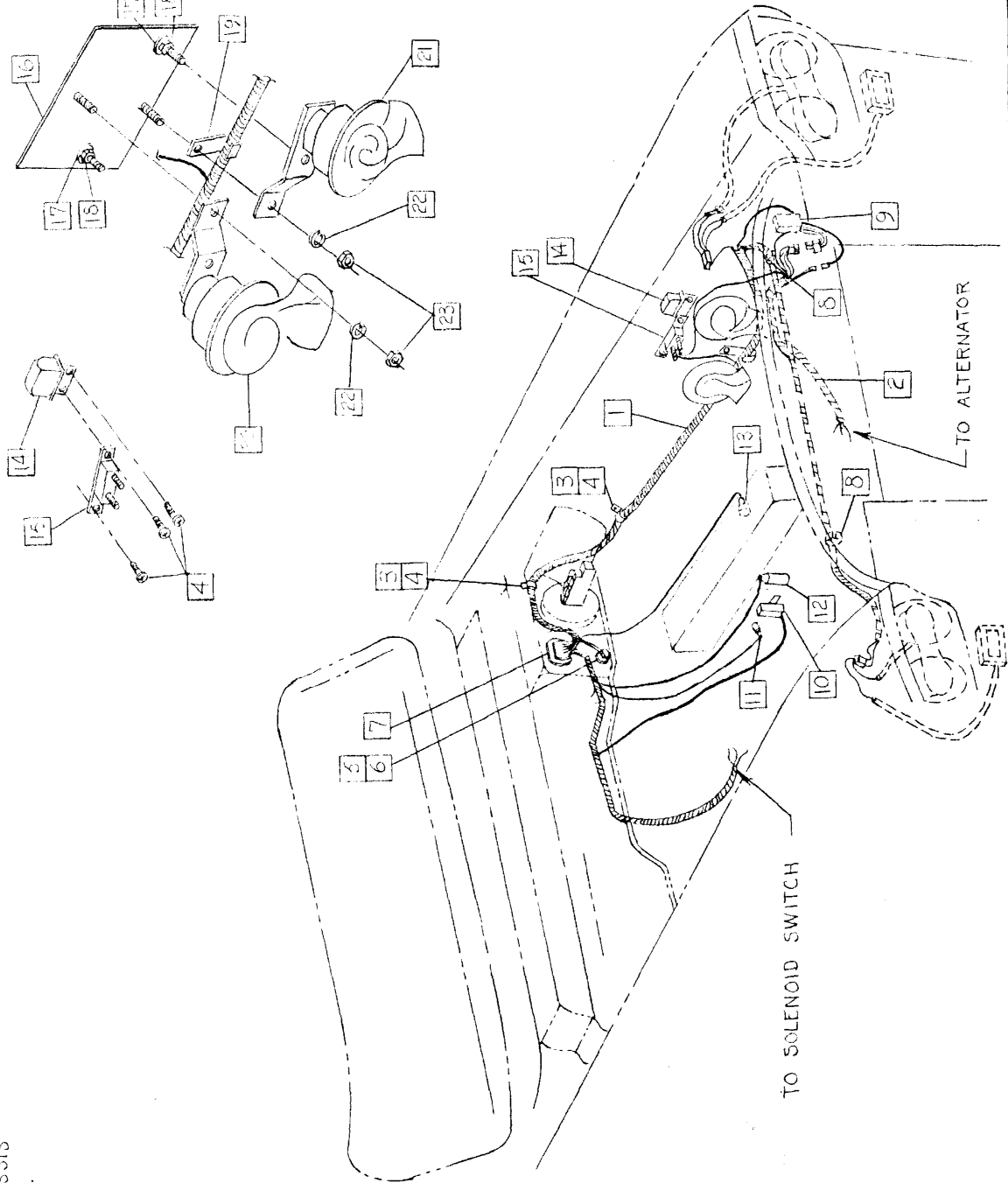
DATE

8-8-68

MODEL:

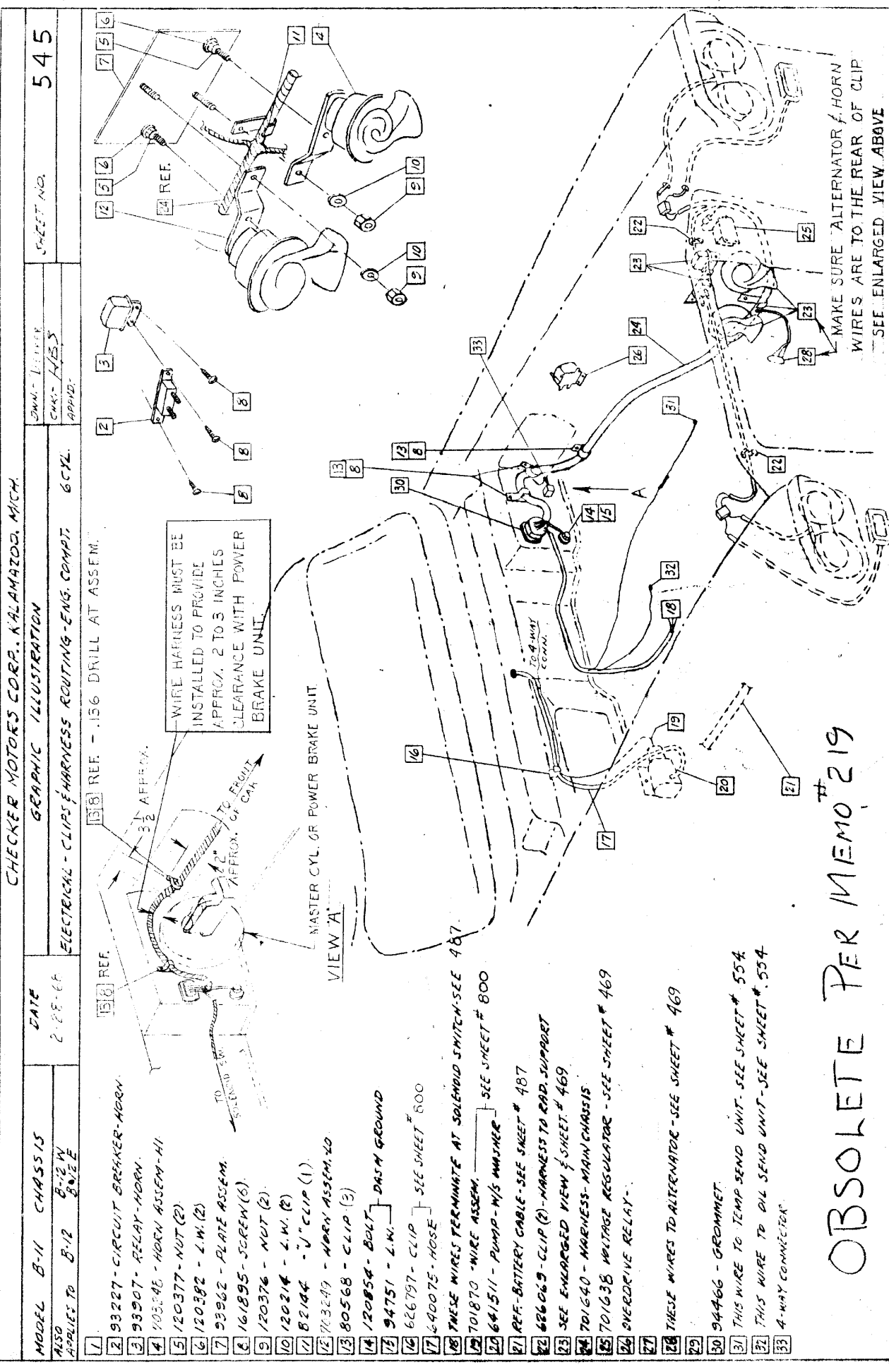
B-11 B-11E
B-12 B-12E
B-12W CHASSIS

1. 703430 WIRING HARNESS - MAIN CHASSIS
2. 703431 HARNESS ASSEM. - ALT. TO REG.
3. 80568 CLIP (2)
4. 161895 SCREW 10 x 1/2 PH.C.R. (5)
5. 120854 BOLT 1/4 - 20 x 3/8
6. 94751 L.W. 1/4 DOME TYPE
7. 94466 GROMMET
8. 626069 CLIP (2)
9. 701698 REGULATOR ASSEM.
10. 701052 BALLAST ASSEM.
11. OIL SENDING UNIT
12. 701907 COIL ASSEM.
13. 703165 SENDING UNIT - ENG. TEMP.
14. 93907 RELAY - HORN
15. 93227 CIRCUIT BREAKER - HORN
16. 93962 PLATE ASSEM.
17. 120382 L.W. 3/8 MED. SPR. (2)
18. 120377 NUT 3/8 - 16 HEX. (2)
19. 82144 J- CLIP
20. 703249 HORN ASSEM. - LOW
21. 703248 HORN ASSEM. - HI
22. 120214 L.W. 3/8 MED. SPR. (2)
23. 120576 NUT 3/8 - 16 HEX. (2)



3-11-68 Revise (1) 80568,
(1) 161895

CHANGE'S



MODEL B-11 CHASSIS		DATE	CHECKER MOTORS CORP., KALAMAZOO, MICH.	
APPLIES TO B-12 B-12 W/ B-12 E		2-28-68	GRAPHIC ILLUSTRATION	
OWNER: TRUCKER		SHEET NO. 545		
CHAS. W/ESS		ELECTRICAL - CLIPS & HARNESS ROUTING - ENG. COMP. 6 CYL.		
APPLD:				

- 1 158 REF.
- 2 93227 - CIRCUIT BREAKER - HORN.
- 3 93907 - RELAY - HORN.
- 4 103346 - HORN ASSEM - HI
- 5 120377 - NUT (2)
- 6 120382 - L.W. (2)
- 7 93962 - PLATE ASSEM.
- 8 161895 - SCREW (6)
- 9 120376 - NUT (2)
- 10 120214 - L.W. (2)
- 11 82194 - "J" CLIP (1)
- 12 763249 - HORN ASSEM. LO
- 13 80568 - CLIP (3)
- 14 120854 - BOLT - DASH GROUND
- 15 94751 - L.W.
- 16 626797 - CLIP - SEE SHEET # 800
- 17 640075 - HOSE - SEE SHEET # 800
- 18 THESE WIRES TERMINATE AT SOLENOID SWITCH - SEE 467.
- 19 701870 - WIRE ASSEM. - SEE SHEET # 800
- 20 647511 - PUMP - W/S W/INNER - SEE SHEET # 800
- 21 REF. BATTERY CABLE - SEE SHEET # 487
- 22 686063 - CLIP (2) - HARNESS TO RAD. SUPPORT
- 23 SEE ENLARGED VIEW & SHEET # 469
- 24 701640 - HARNESS - MAIN CHASSIS
- 25 701638 VOLTAGE REGULATOR - SEE SHEET # 469
- 26 OVERDRIVE RELAY.
- 27 THESE WIRES TO ALTERNATOR - SEE SHEET # 469
- 28 94466 - GROMMET.
- 29 THIS WIRE TO TEMP SEND UNIT - SEE SHEET # 554
- 30 THIS WIRE TO OIL SEND UNIT - SEE SHEET # 554
- 31 4-WAY CONNECTOR.

(1) ADD'L COPY BODY ENGR.

OBSOLETE PER MEMO # 219