

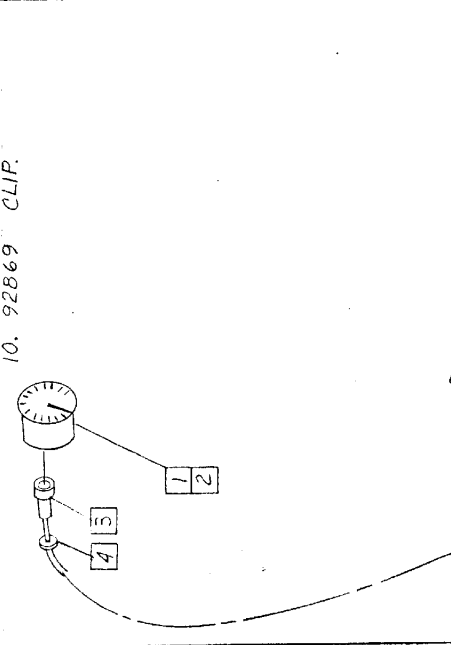
Revised 10-10-68 / 644

EFFECTIVE JAN 1, 1968

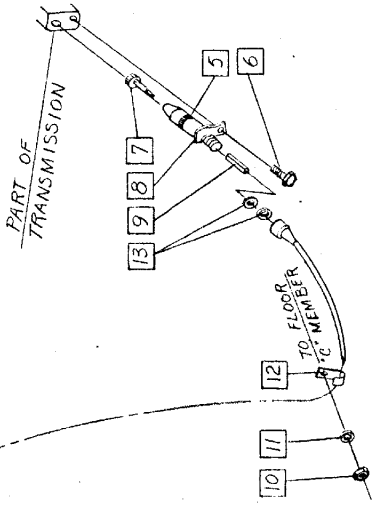
CHECKER MOTORS CORP. KALAMAZOO, MICH.

MODEL: B-11 B-12 CHASSIS	DATE	GRAPHIC ILLUSTRATION	SHEET NO.
B-11E B-12E B-12W	2-5-68	SPEEDOMETER CABLE	717
B-12W6 B-12W8			

1. 97185 SPEEDO. ASSEM.
2. 97184 SPEEDO. ASSEM. (KILO.)
3. 703215 CABLE ASSEM.
4. 94465 GROMMET (IN DASH)
5. 702238 O' RING
6. 120854 BOLT
7. SPEEDO. GEAR - SEE SHEETS 660, 661, 662
8. 701412 ADAPTER ASSEM.
9. 702568 KEY
10. 120375 NUT
11. 120380 L.W.
12. 92869 CLIP
13. 120394 WASHER (2)

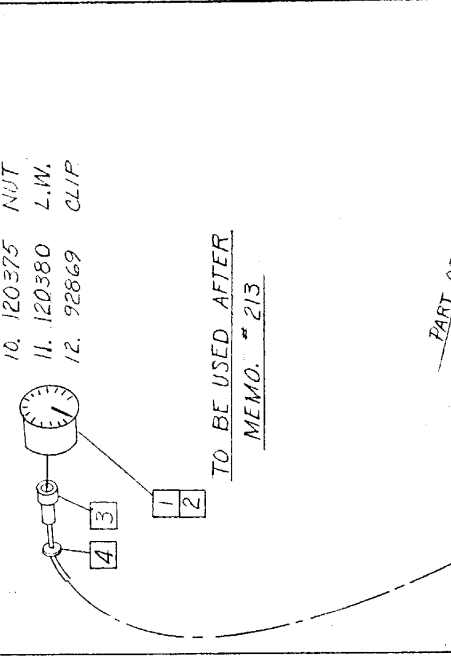


TO BE USED PRIOR
TO MEMO # 213

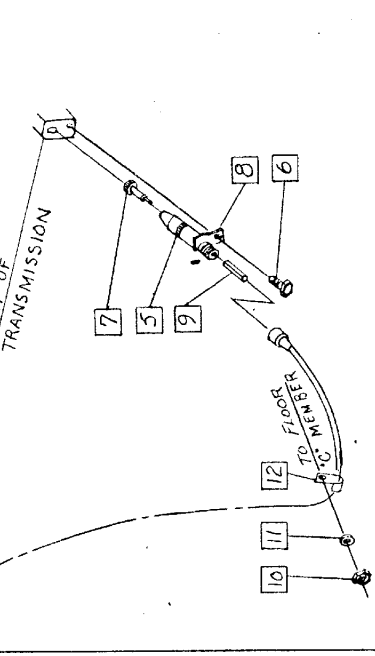


TAXI

1. 97185 SPEEDO. ASSEM.
2. 97184 SPEEDO. ASSEM. (KILO.)
3. 703215 CABLE ASSEM.
4. 94465 GROMMET (IN DASH)
5. 702238 O' RING
6. 120854 BOLT
7. SPEEDO. GEAR - SEE SHEETS 660, 661, 662
8. 703216 ADAPTER ASSEM.
9. 702568 KEY
10. 120375 NUT
11. 120380 L.W.
12. 92869 CLIP

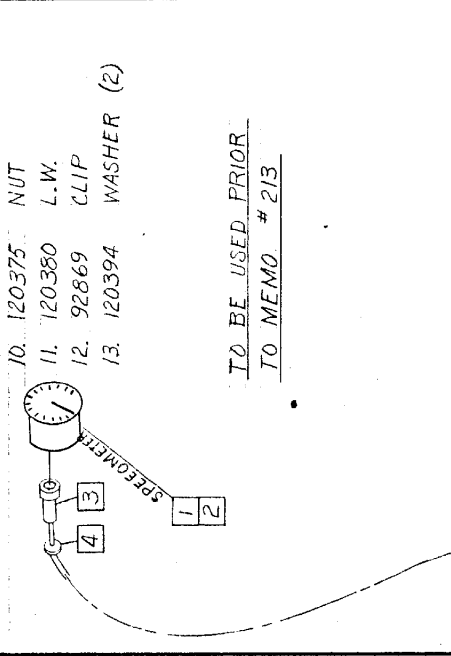


TO BE USED AFTER
MEMO # 215

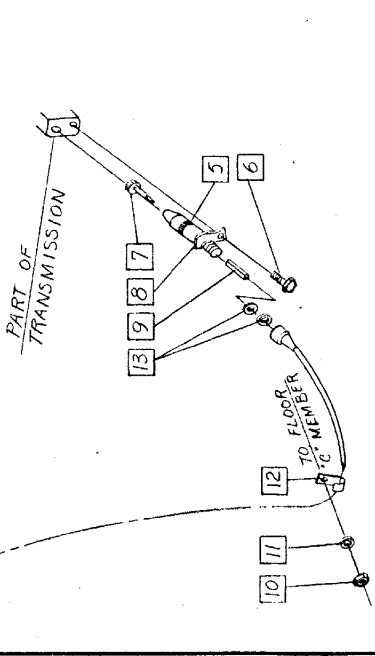


TAXI

1. 97185 SPEEDO. ASSEM.
2. 97184 SPEEDO. ASSEM. (KILO.)
3. 703215 CABLE ASSEM.
4. 94465 GROMMET (IN DASH)
5. 702238 O' RING
6. 120854 BOLT
7. SPEEDO. GEAR - SEE SHEETS 660, 661, 662
8. 701412 ADAPTER ASSEM.
9. 702568 KEY
10. 120375 NUT
11. 120380 L.W.
12. 92869 CLIP
13. 120394 WASHER (2)



TO BE USED PRIOR
TO MEMO # 213



TAXI

1. 97185 SPEEDO. ASSEM.
2. 97184 SPEEDO. ASSEM. (KILO.)
3. 703215 CABLE ASSEM.
4. 94465 GROMMET (IN DASH)
5. 702238 O' RING
6. 120854 BOLT
7. SPEEDO. GEAR - SEE SHEETS 660, 661, 662
8. 701412 ADAPTER ASSEM.
9. 702568 KEY
10. 120375 NUT
11. 120380 L.W.
12. 92869 CLIP
13. 120394 WASHER (2)



TO BE USED PRIOR
TO MEMO # 213



TAXI

PASS. CAR