

065

SWK - DITTEL  
CHK - EQ 4-9-5  
APPR.

CHECKER MOTOR CORP., Kalamazoo, MICH.

GRAPHIC ILLUSTRATION

ROOF PROOFING - AIRBUS (TEXACO)

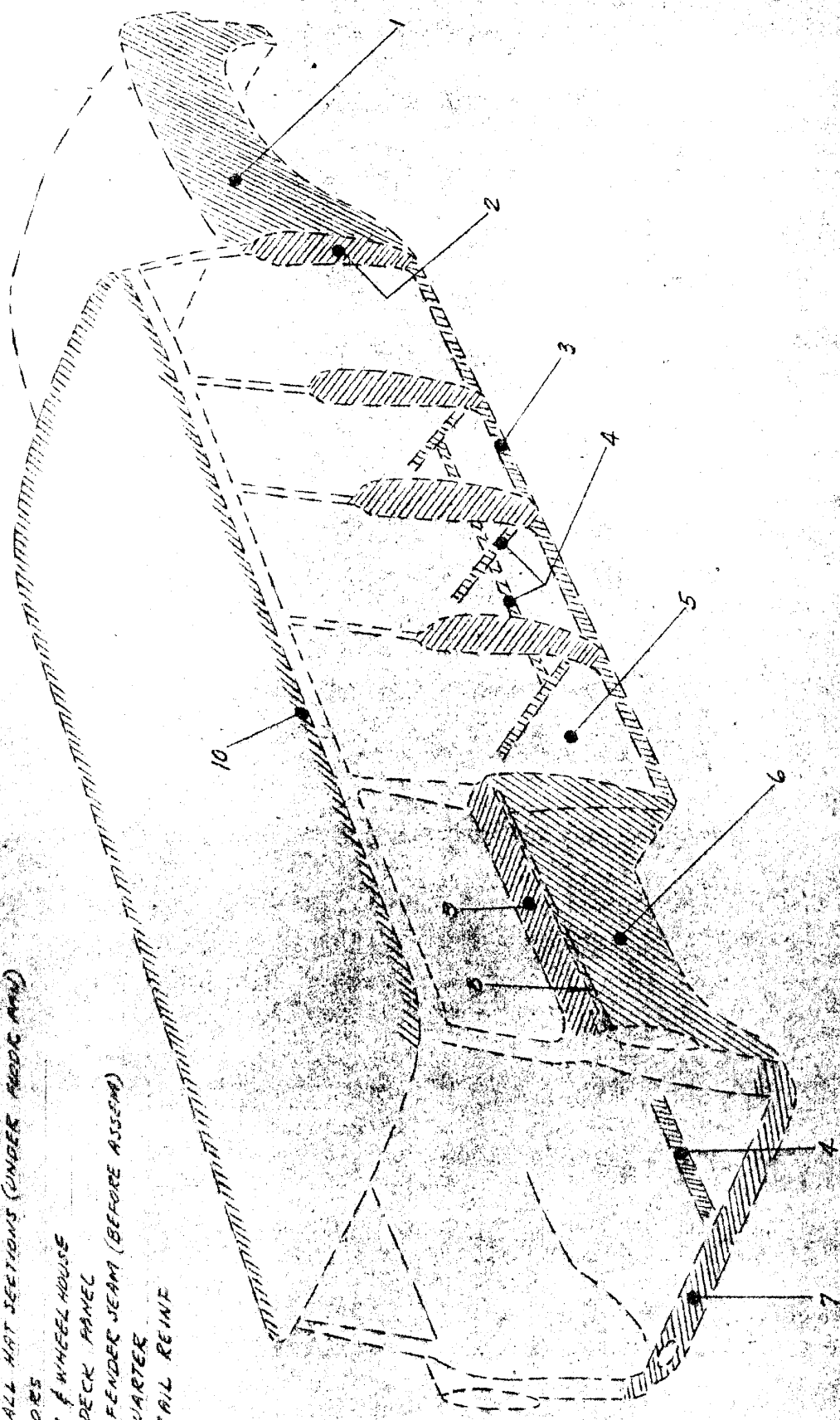
DATE  
4-9-65

BODY

MODEL AIRM6 - AIRM8

TEXACO RUST PROOF

- 1- FENDER WELL
- 2- ALL PILLARS
- 3- SILL
- 4- INSIDE ALL HAT SECTIONS (UNDER AEROC AM)
- 5- ALL DOORS
- 6- FENDER & WHEELHOUSE
- 7- LOWER DECK PANEL
- 8- BODY TO FENDER JEAM (BEFORE ASSEMB)
- 9- REAR QUARTER
- 10- ROOF RAIL REINF



(1) ADD. COP. BODY ENGR.