

EFFECTIVE JAN. 1, 1966

CHECKER MOTORS CORP., KALAMAZOO, MICH.

GRAPHIC ILLUSTRATION
 PARKING BRAKE - AIRBORUS

DATE
 2-2-68

CHASSIS

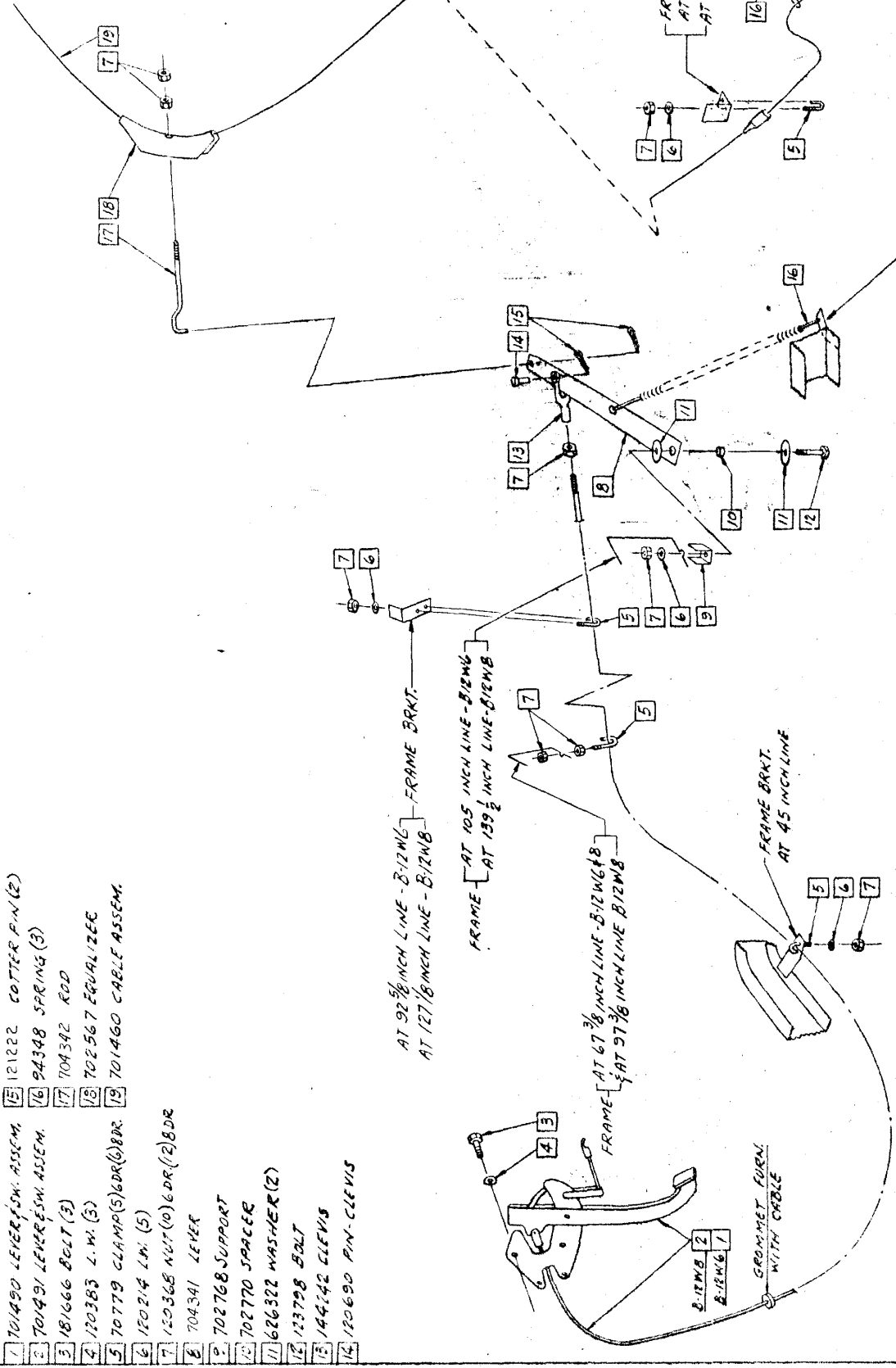
MODEL
 B12W6
 B12WB

SHEET NO.
 521

DRW. DIRS.
 CHK. DE 2-2-68
 APPR. [Signature]

CHANGE'S
 2-20-68 121222 WAS 103373

- 1 701490 LEVER/FSW. ASSEM.
- 2 701491 LEVER/FSW. ASSEM.
- 3 181666 BOLT (3)
- 4 120383 L.W. (5)
- 5 70779 CLAMP(S)GDR(6)BR.
- 6 120214 L.W. (5)
- 7 120368 NUT (10)GDR (12)DR
- 8 704341 LEVER
- 9 702768 SUPPORT
- 10 702770 SPACER
- 11 626322 WASHER (2)
- 12 123798 BOLT
- 13 144142 CLEVIS
- 14 120690 PIN-CLEVIS



FRAME BRKT. (1) EACH SIDE
 AT 124 1/2 INCH LINE - B12W6
 AT 155 INCH LINE - B12WB

FRAME BRKT. (1) EACH SIDE
 AT 92 3/8 INCH LINE - B12W6
 AT 127 1/8 INCH LINE - B12WB

FRAME BRKT. (1) EACH SIDE
 AT 105 INCH LINE - B12W6
 AT 139 1/2 INCH LINE - B12WB

FRAME BRKT. (1) EACH SIDE
 AT 67 3/8 INCH LINE - B12W6
 AT 97 3/8 INCH LINE - B12WB

FRAME BRKT. (1) EACH SIDE
 AT 45 INCH LINE - B12WB

FRAME BRKT. (1) EACH SIDE
 AT 110 INCH LINE - B12W6
 AT 144 1/2 INCH LINE - B12WB

GROMMET FURN.
 WITH CABLE