

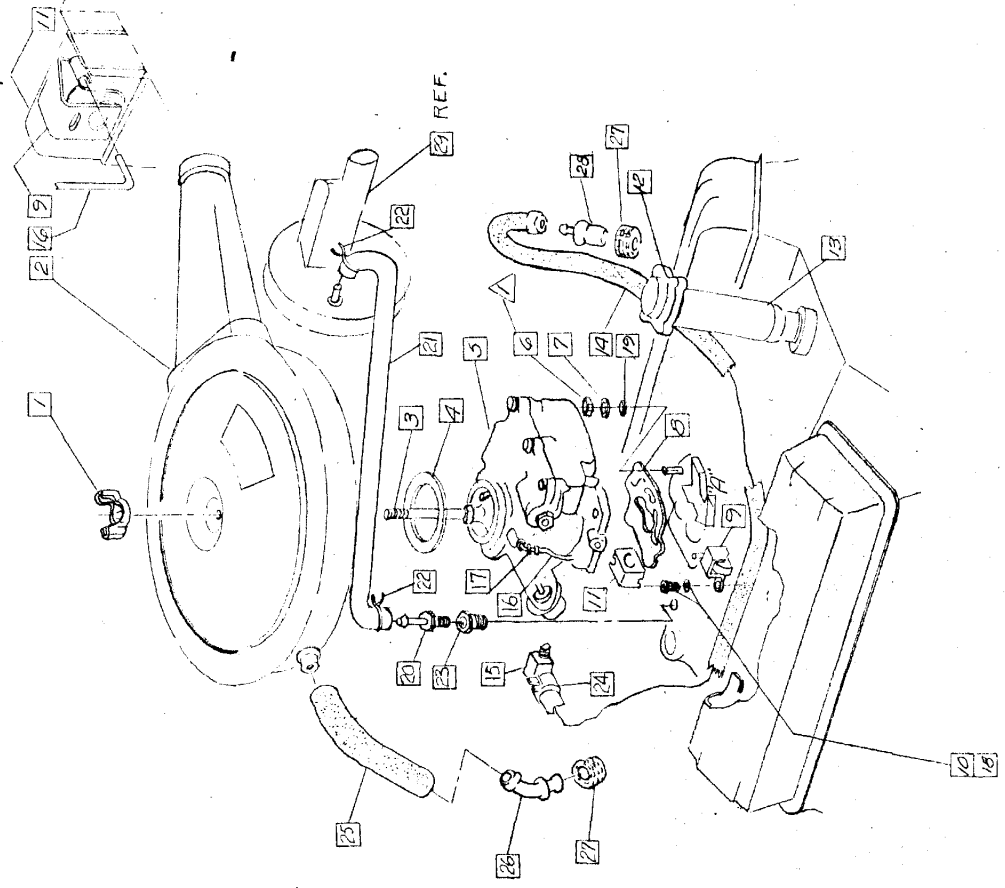
APPROVED 4-23-68

EFFECTIVE JAN 1 1968

CHECKER MOTORS CORP. KALAMAZOO, MICH.

MODEL: B-11 B-12M B-12 B-12E	CHASSIS	DATE 1-1-68	GRAPHIC ILLUSTRATION	SHEET NO. 566
CRANKCASE VENT. - V-6 307 C.I.D.		APPVD		DWN 1/2 IN. NUTS CHK. K.D. 1-21-68

- 1 702177 - Wing Nut
- 2 703197 - (STD TURNS), 703198 (Auto Turns)
- 3 704366 - Stud Assem
- 4 702284 - Gasket
- 5 CARBURETOR - 703123 (STD), 703124 (AUTO)
- 6 703688 - Nut (4)
- 7 702114 - Washer (2) REAR STUDS ONLY
- 8 702192 - GASKET
- 9 703019 - THERMOSTAT
- 10 702855 - SCREW
- 11 702268 - COVER
- 12 CAP ASSEM - TO BE FURN IN ENGINE
- 13 TUBE ASSEM
- 14 702268 - HOSE
- 15 704350 - CONNECTOR
- 16 702269 - ROD
- 17 702267 - CLIP
- 18 128328 - LM
- 19 702357 - WASHER (2) FRONT STUDS ONLY
- 20 702373 - CONNECTOR
- 21 704445 - HOSE
- 22 272846 - CLAMP (2)
- 23 444028 - BUSHING
- 24 702104 - CLAMP (2)
- 25 704272 - HOSE
- 26 704114 - CONNECTOR
- 27 704146 - GROMMET (2)
- 28 703105 - VALVE ASSEM
- 29 701980 - POWER BRAKE CYL



OBSOLETE PER  
MEMO # 219  
SEE G.I. 561-A

- △ - 9 - 10 LBS. FT.
- △ - 3 - 4 LBS. FT.
- △ - 25 - 35 LBS. FT.
- △ - 2 - 4 LBS. FT.