

EFFECTIVE JAN. 1, 1968

CHECKER MOTORS CORP., KALAMAZOO MICH.

SHEET NO. 552

CHK. R.C.P. 2-29-68

DWG. DESIGNED BY

GRAPHIC ILLUSTRATION

DATE 2-16-68

MODEL 8-11 3-12V CHASSIS

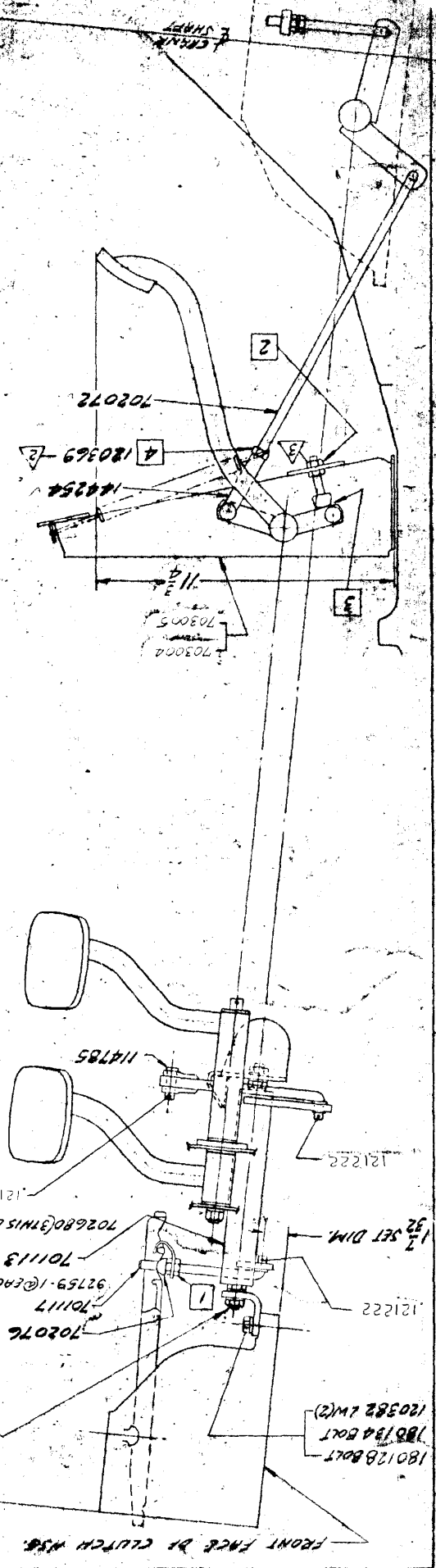
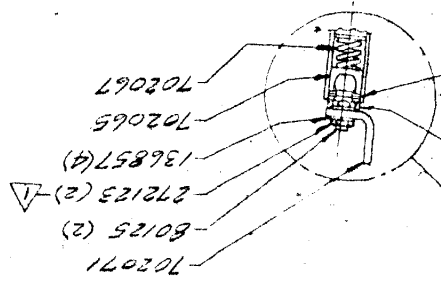
CLUTCH LINKAGE (ADJUSTMENT PROCEDURE) V-8

CHANGE'S

20-25-12122 WAS 10373

INSTALLATION PROCEDURE FOR NEW CLUTCH-V8
 WITH YOKE JUST CONTACTING CLUTCH FINGERS
 ADJUST AT 1 TO OBTAIN $1\frac{1}{2}$ SET DIM.
 WITH CLUTCH PEDAL SET AT $11\frac{3}{4}$ ADJUST STOP
 AT 2 (REF. THIS IS A BENCH ADJUSTMENT)
 WITH .187 THICK GAGE AT 3 & ROD 702072
 HELD DOWN BY HAND AGAINST CLUTCH FINGERS
 ADJUST AT 4 TO INSTALL CLEARANCE 114785

- 1- 30 - .35 LBS. FT.
- 2- 17 - .29 LBS. FT.
- 3- 9 - 10 LBS. FT.



1/2 SET DIM.

FRONT FACE OF CLUTCH M58.