

CHECKER MOTORS CORP., KALAMAZOO MICH.  
 GRAPHIC ILLUSTRATION  
 CIRCUIT BREAKERS (LOCATION & SIZE)

540

SHEET NO

DATE

BY

APP'D

MODEL

CHASSIS

DATE

BY

APP'D

MODEL

CHASSIS

DATE

BY

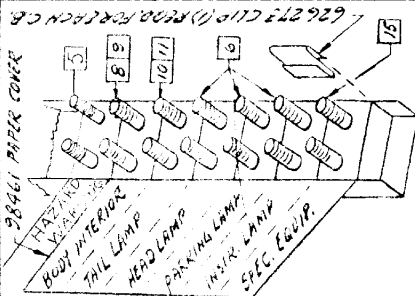
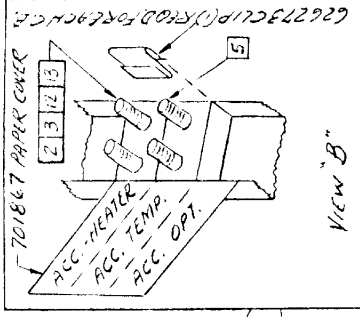
APP'D

MODEL

SEE VIEW "A" - CIRCUIT BREAKERS LOCATED  
 IN INSTR. PANEL CHANNEL OF PASS. CAB  
 & IN PEDAL SUPT. CHANNEL OF CAB

LEFT FRONT FENDER

NOTE USAGE  
 AT HEADLAMP  
 OR ACC.



SIZE - AMPS

1	93814	15	HEADLAMP SW. F.C.B. ASSEM.
2	95436	15	CIRCUIT BREAKER
3	95695	20	CIRCUIT BREAKER
4	97436	6	CIRCUIT BREAKER
5	97453	10	CIRCUIT BREAKER
6	701508	6	LEAD F.C.B. ASSEM.
7			
8	97655	6	LEAD F.C.B. ASSEM.
9	97656	10	LEAD F.C.B. ASSEM.
10	97658	6	LEAD F.C.B. ASSEM.
11	97659	10	LEAD F.C.B. ASSEM.
12	639720	30	CIRCUIT BREAKER
13	639883	25	CIRCUIT BREAKER
14	93227	15	CIRCUIT BREAKER
15	645329	25	SWITCH F.ARNESSE ASSEM.

VIEW "A"

VIEW "B"

SEE VIEW "B"

39277 CIRCUIT BREAKER  
 IS AMPL. AT LEFT CONVL.  
 SIDE - USED FOR DOOR  
 FTG. AND WINDSH.

1	W/O A/C	1
1	WITH SINGLE A/C	1
1	WITH DUAL A/C	1
1	WITH SIDE MARKER & DUAL A/C	1
1	W/O A/C	1
1	WITH SINGLE A/C	1
1	WITH DUAL A/C	1
2	W/O A/C	2
2	WITH SINGLE A/C	2
2	WITH DUAL A/C	2
1	W/O A/C	1
1	WITH SINGLE A/C	1
1	WITH DUAL A/C	1
1	WITH SIDE MARKER & DUAL A/C	1

SHIELD PART WINDOW

ALL AIR AIRWAYS