

CHECKER MOTORS CORP. KALAMAZOO, MICH.

EFFECTIVE JAN. 1, 1968

MODEL: B-11 CHASSIS  
B-12 W  
B-12 E

DATE  
1-15-68

GRAPHIC ILLUSTRATION

SHEET NO

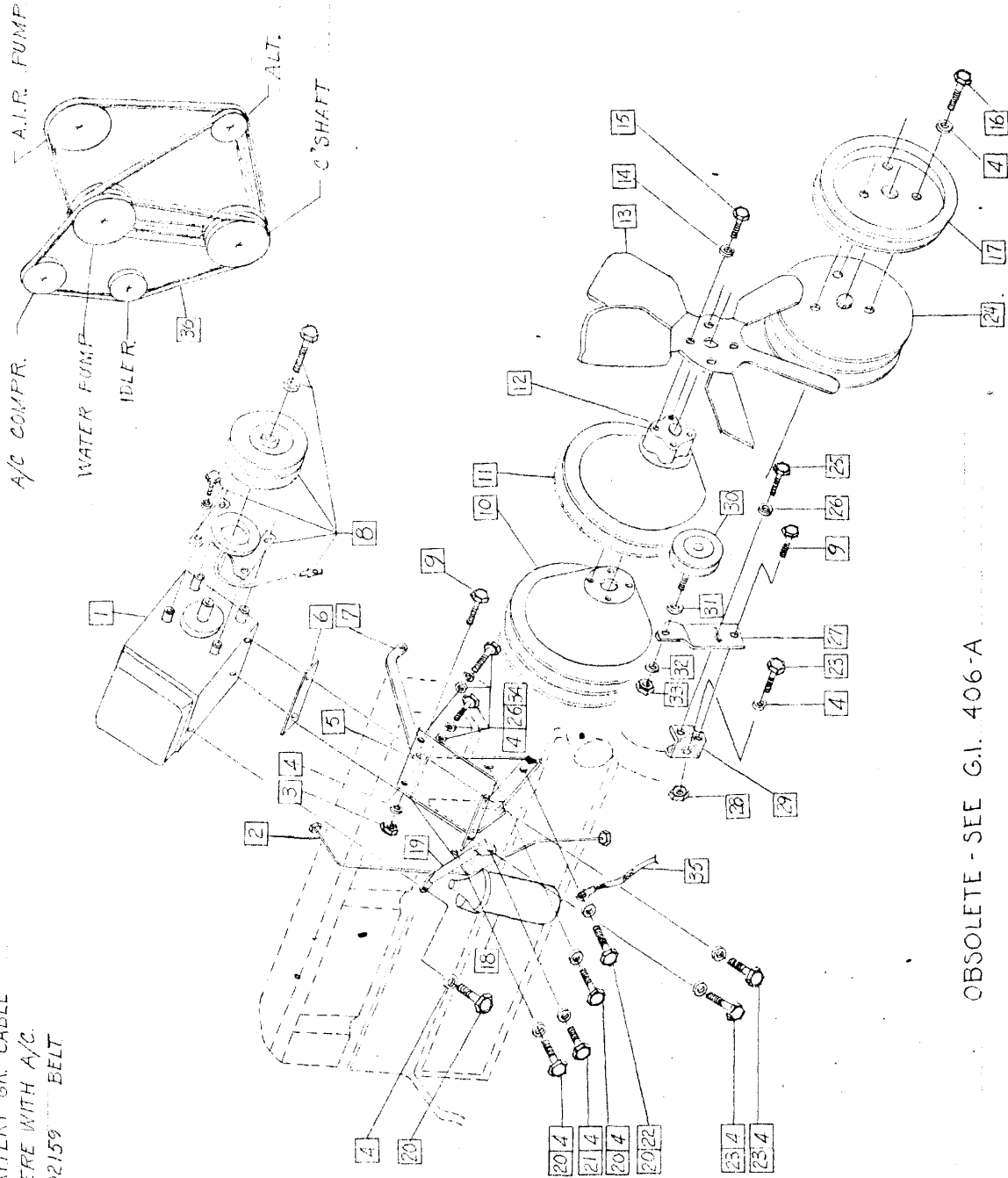
409

AIR COND. WITH STD. STEERING - 6 CYL. - STD. TRANS.

DWN DEXTER  
CHG. DE 1-16-68

APPVD

- 1. 701726 COMP. ASSEM.
- 2. 703178 TUBE ASSEM.
- 3. 120269 NUT
- 4. 120382 L.W. (13)
- 5. 701263 BRKT. ASSEM.
- 6. 702370 SPACER
- 7. 702223 BRACE
- 8. 701225 CLUTCH ASSEM.
- 9. 454922 BOLT (2)
- 10. 702169 PULLEY - W. P. - REF.
- 11. 702215 PULLEY - W. P.
- 12. 702326 SPACER
- 13. 701224 FAN
- 14. 120214 L.W. (4) - REF.
- 15. 454589 BOLT (4) - REF.
- 16. 181629 BOLT (5) - REF.
- 17. 702244 PULLEY - C.S.
- 18. 701907 1GN. COIL - REF.
- 19. 702320 BRACE
- 20. 454904 BOLT (4)
- 21. 186679 BOLT
- 22. 178551 L.W.
- 23. 186679 BOLT (4)
- 24. HARMONIC BALANCER - REF.
- DUAL GROOVE - (FURN. ON ENGINE)
- 25. 454922 BOLT
- 26. 120394 WASHER (5)
- 27. 702372 BRKT.
- 28. 442828 LOCK NUT
- 29. 701264 SUPPT ASSEM.
- 30. 97639 PULLEY ASSEM.
- 31. 120388 WASHER
- 32. 120383 L.W.
- 33. 271501 NUT
- 34. 454906 BOLT (2)
- 35. BATTERY GR. CABLE  
HERE WITH A/C
- 36. 702159 BELT



OBsolete - SEE G.I. 406-A