

CHEVROLET MOTORS CORP., KALAMAZOO, MICH.

GRAPHIC ILLUSTRATION

WINDEN - POWER DOOR

DATE

11-16-65

MODEL A-11 A-12 A-12W BODY

DMN - KERLEY

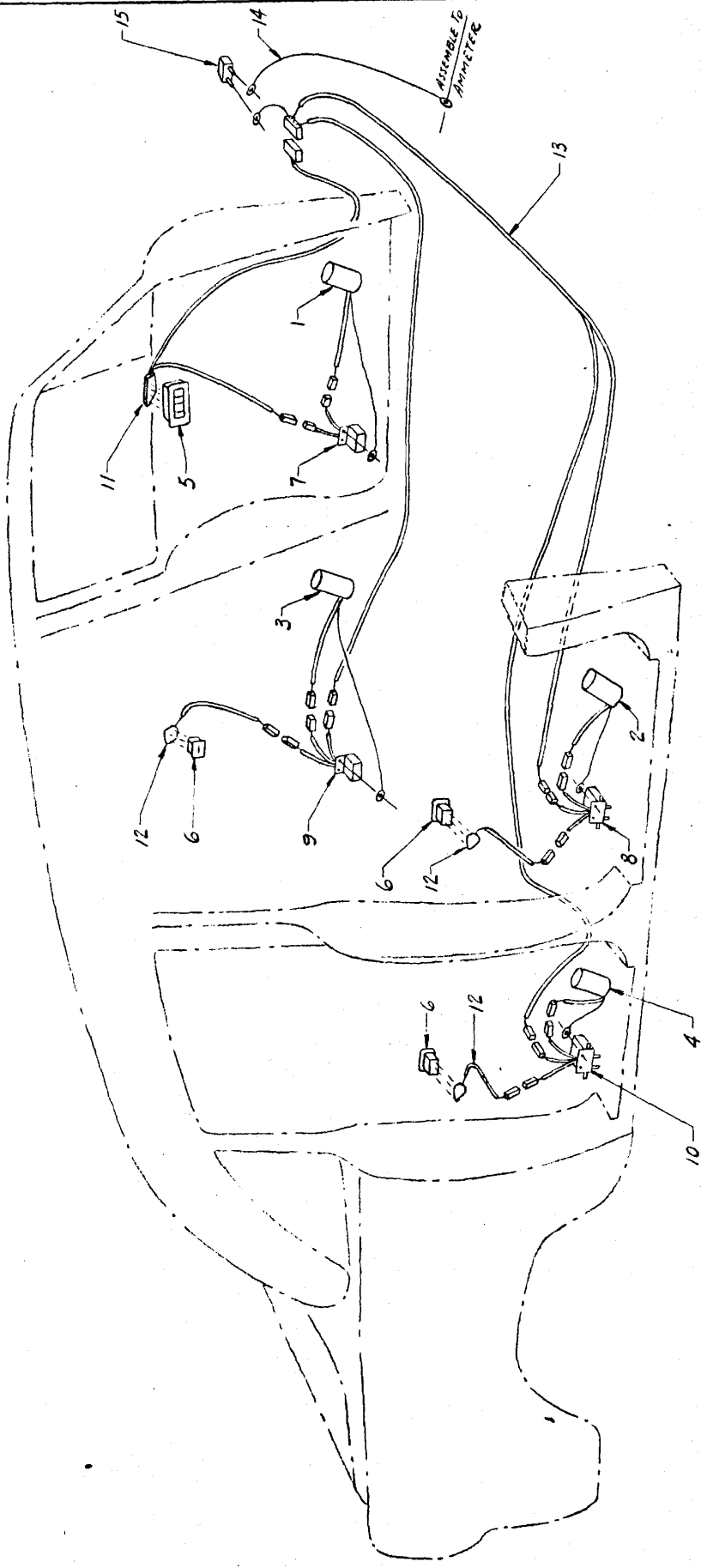
SHEET NO.

285

CHK - [unclear]  
APPRO - 5 THRU 11/16/65

1	639099	REGULATOR ASSEM. FRT. L.H.	1
2	639100	" " " " FRT. R.H.	1
3	639101	" " " " REAR L.H.	1
4	639102	" " " " REAR R.H.	1
5	639097	SWITCH ASSEM. FOUR BUTTON	1
6	639098	SWITCH ASSEM. SINGLE BUTTON	3
7	639194	RELAY/CABLE ASSEM. FRT. L.H.	1
8	639196	" " " " FRT. R.H.	1
9	639195	" " " " REAR L.H.	1
10	639197	" " " " REAR R.H.	1
11	639103	HARNESS ASSEM.	1
12	639171	CABLE ASSEM.	5
13	639172	HARNESS ASSEM.	1
14	639108	WIRE ASSEM.	1
15	59227	CIRCUIT BREAKER	1

(1) ADD'L. COPY BODY ENGR.



Chrysler Motors Corp. Ann Arbor, Mich.

285-A

Sheet 16

Drawn: KERNEY  
 CMA: RE, 5-5-66  
 APPRO: How 3/22/66

GENERAL ILLUSTRATION

WINDOW- POWER DOOR (L.H. FRONT)

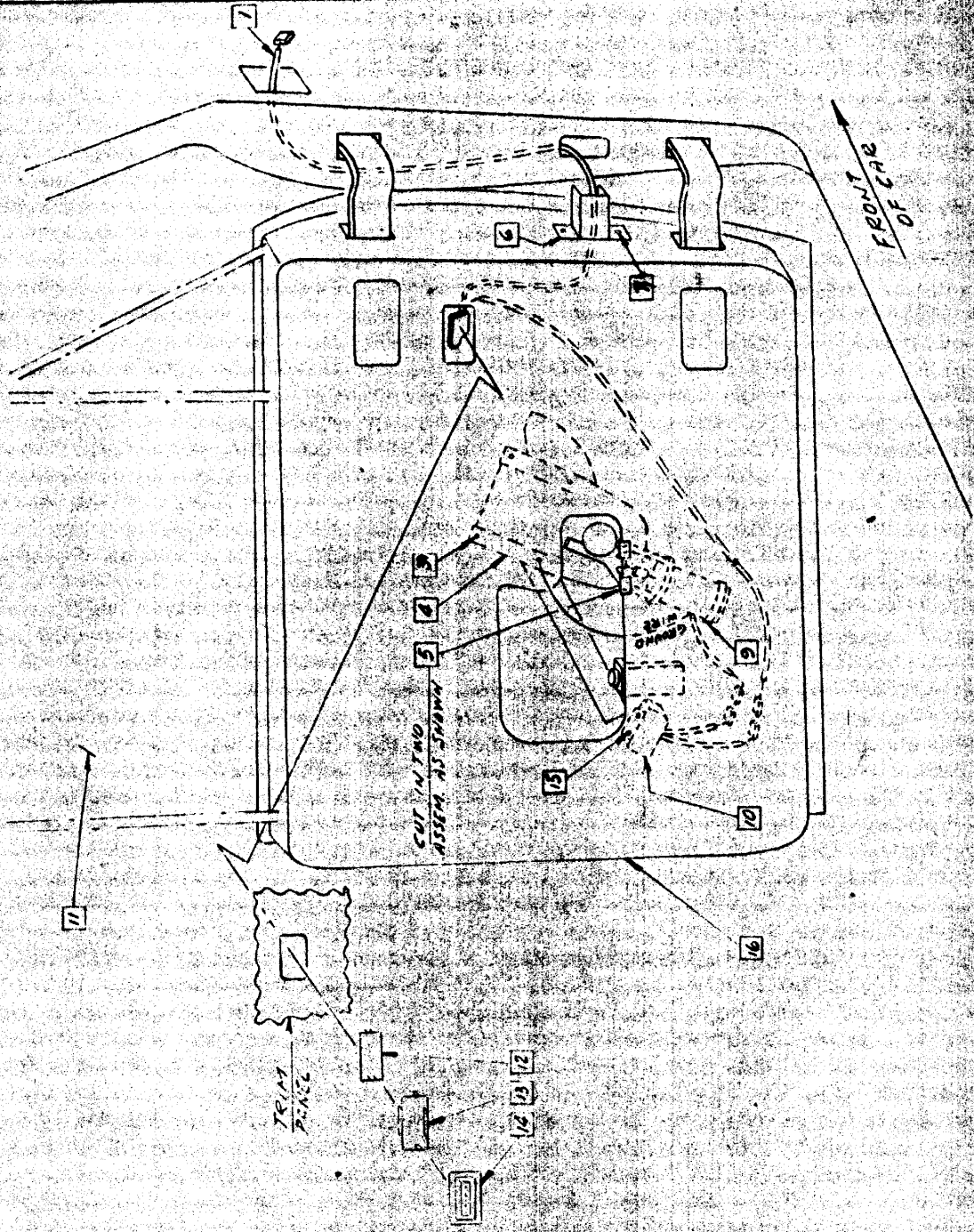
DATE

July

Model A2  
 A1EM

REF. SEE GT 2853, 2854, 2857 & 2858 FOR GENERAL ILLUSTRATION

- 1 639163 HARNESS ASSEM.
- 2
- 3 187987 SCREW (4)
- 4 639009 REGULATOR ASSEM.
- 5 640155 BUMPER
- 6 640052 GROUND T
- 7 170982 SCREW (2)
- 8
- 9 HOSE CLAMP TUBES (2)
- 10 639194 REINFORCEMENT ASSEM.
- 11 639534 GLASS CHANNEL ASSEM.
- 12 640128 RETAIN.
- 13 640126 RETAINERS
- 14 639027 SWITCH ASSEM.
- 15 141669 SCREW (2)
- 16 660403 INNER PANEL

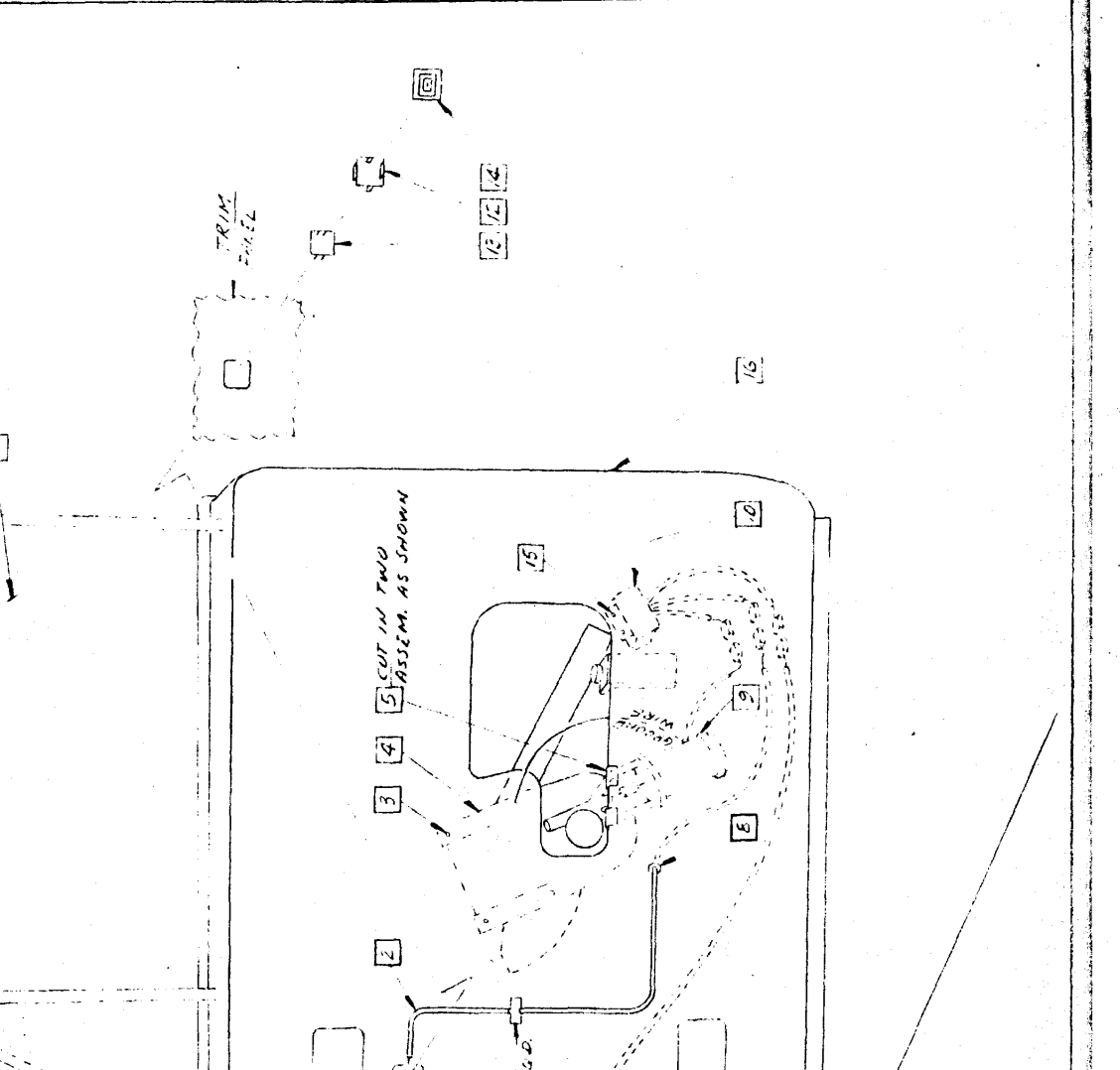


103 Model Corp Body Eng.

CHICAGO MOTOR CO., A. HANZON Mfg.  
 WINDING - PEPPER BLOCK (C. H. FRONT)  
 DATE 5-25-16  
 SHEET 16  
 285-B

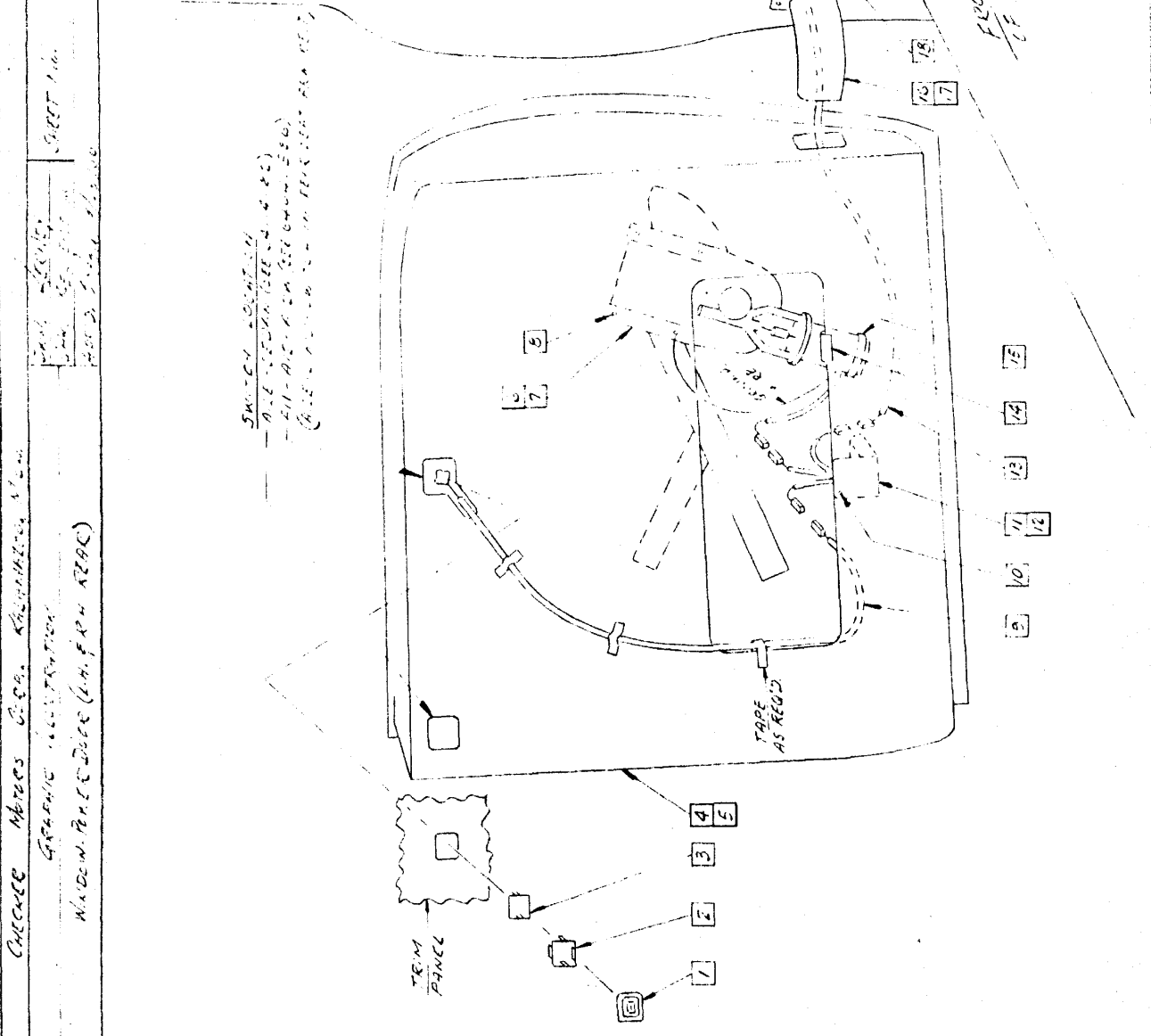
MODEL A11 BODY  
 MODEL A12  
 MODEL A12M

REF. - SEE GI. 285, A, C, 286, 287 & 300 FOR ADDITIONAL INFORMATION



- 1 639172 HARNESS ASSEM
- 2 639171 CABLE ASSEM
- 3 187987 SCREW (4)
- 4 639100 REGULATOR ASSEM.
- 5 640355 BUMPER
- 6 640052 CONDUIT
- 7 170988 SCREW (2)
- 8 627433 GROMMET
- 9 HOSE - CEMENT TO REG. MOTOR
- 10 639196 RELAY & CABLE ASSEM.
- 11 639540 GLASS & C-CHANNEL ASSEM.
- 12 640125 RETAINER
- 13 640127 RETNF.
- 14 639098 SWITCH ASSEM.
- 15 161869 SCREW (E)
- 16 640404 INNER PANEL

(1) ADD'L. COPY BODY ENR



- CHANCE MACHS CO. KANSAS CITY, MO  
GRAPHIC INDUSTRY  
WIDEW. PANEL DOOR (L.H. & R.H. REQS)
- 1 639098 SWITCH ASSEM (2)  
 2 640125 RETAINER (2)  
 3 640127 REINF. (2)  
 4 640605 INNER PANEL L.H.  
 5 640606 INNER PANEL R.H.  
 6 639101 REGULATOR ASSEM. L.H.  
 7 639102 REGULATOR ASSEM. R.H.  
 8 157987 SCREW (8)  
 9 639171 CABLE ASSEM (2)  
 10 161269 SCREW (4)  
 11 639195 RELAY & CABLE ASSEM. L.H.  
 12 639197 RELAY & CABLE ASSEM. R.H.  
 13 639172 HARNESS ASSEM.  
 14 640355 BUMPER (2)  
 15 HOLE-CEMENT TO REG. MOTOR  
 16 640053 CONDUIT L.H.  
 17 640054 CONDUIT R.H.  
 18 164339 SCREW (4)

REF: SEE GI 285, 9, 8, 186, 287 & 299 FOR ADDITIONAL INFORMATION

(1) ADD'L. COPY BODY ENG.