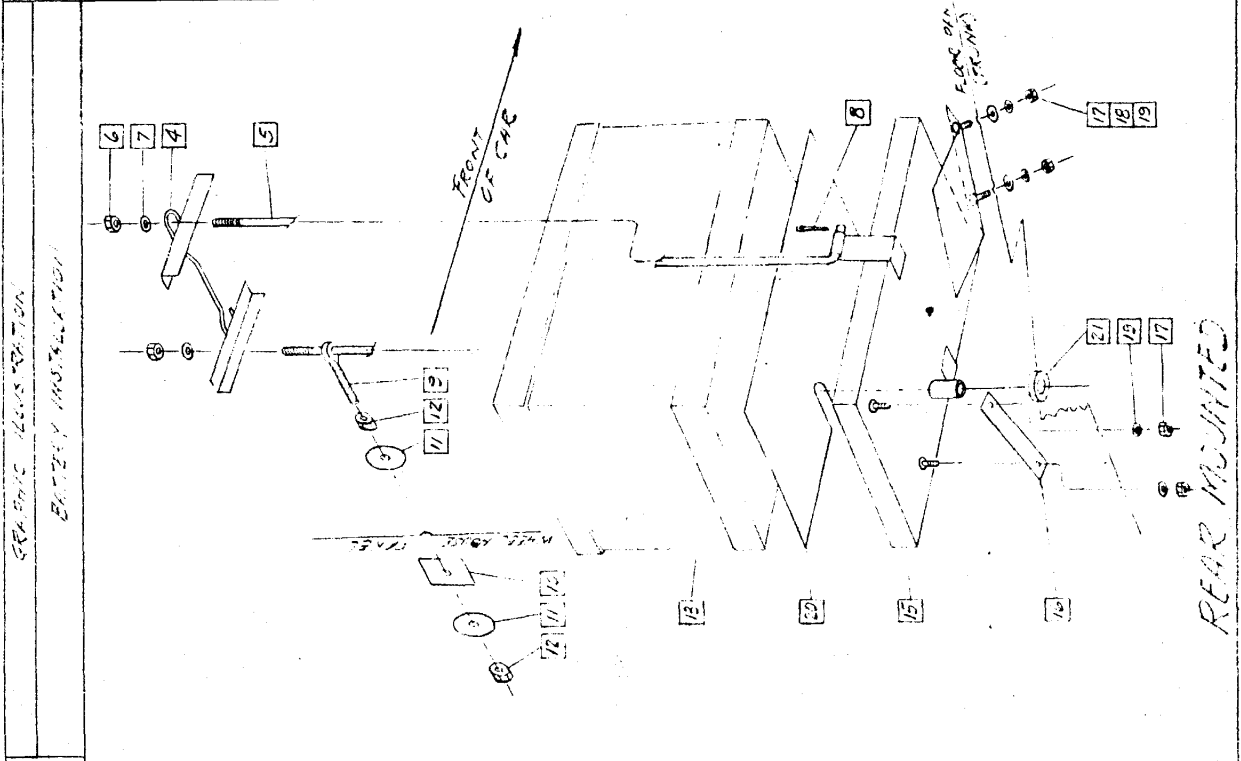
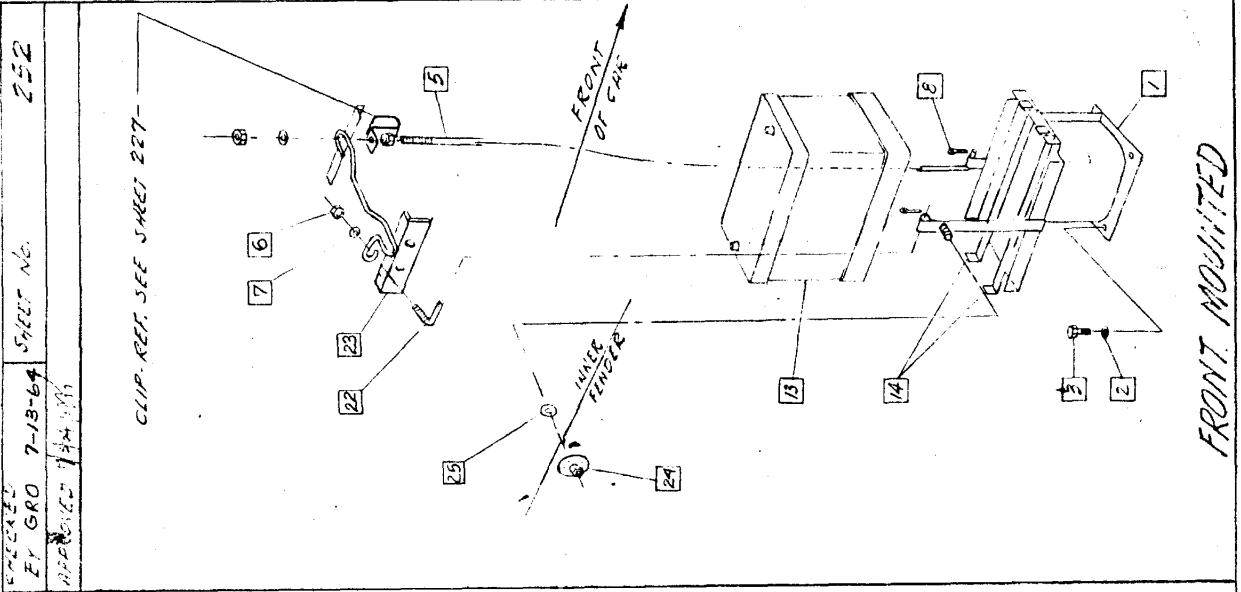


REVISED: 5-4-65 / 5-13-65 / 8-26-66 / 3-20-67

CHECKER MOTOR CO. CO., KALAMAZOO, MICH.



MODEL	E-11	E-12	E-12W	E-12WB	CHASSIS	DATE	SHEET NO.
1	701892	SUPPORT ASSEM.	1			7-14-64	252
2	120383	L.W.	4				
3	181666	BOLT	4				
4	95027	HOLD-DOWN	1				
5	94489	RED NUT	2				
6	120368	NUT	2				
7	446865	WASHER	2				
8	113373	COTTER PIN	2				
9	70196	BOLT	1				
10	80526	SHIM	1				
11	246477	WASHER	2				
12	124824	NUT	2				
13	701570-50A, 97478-75A, 93335-80A, 95370-90A, 97456-50A.	BATTERY	1				
14		CLEAT	2				
15	95283	TRAY ASSEM.	1				
16	94716	STRAP	1				
17	120376	NUT	4				
18	120322	WASHER	2				
19	120214	L.W.	4				
20	94722	PAZ	1				
21	94702	GRONNET	1				
22	704059	HOLD-DOWN FOD	1				
23	701909	H.D. ASSEM.	1				
24	626492	WASHER ASSEM.	1				
25	626625	WASHER-RUBBER	1				

FRONT MOUNTED

REAR MOUNTED

7-13-64

REVISED 8-12-66/

CHASSIS MOUNTED CABIN, MOUNTING PLATE

Sheet No. 252-A

MODEL B-11 CHASSIS DATE 4-15-66

Drawn By: [Signature]

- 1
- 2 95278 STRAP ASSEM.
- 3 181637 BOLT
- 4 178551 L.W. (3)
- 5 120369 NUT
- 6 94719 INSULATOR
- 7 165002 SCREW (3)
- 8 702221 CLIP (4)
- 9 171104 SCREW (2)
- 10
- 11
- 12
- 13 80345 CLAMP (2)
- 14 INSPECT CLEARANCE - CABLE TO EXHAUST PIPE
- 15
- 16
- 17 REF. EXHAUST PIPE HANGER BRKT.
- 18
- 19
- 20
- 21 701699 CABLE ASSEM.
- 22 701700 CABLE ASSEM.
- 23 702854 BLOCK
- 24 702857 SPACER
- 25 701698 BOLT ASSEM.
- 26 123461 BOLT (2)
- 27 120392 WASHER (2)
- 28 120280 L.W. (2)
- 29 120367 NUT (2)
- 30 178551 L.W.
- 31 124925 NUT (2)
- 32 702836 BOOT

