

CHECKER MOTORS CORP., KALAMAZOO, MICH.

GRAPHIC ILLUSTRATION

SHEET NO

273

DMN. KERNEY
CHK.
APP'D.

DATE

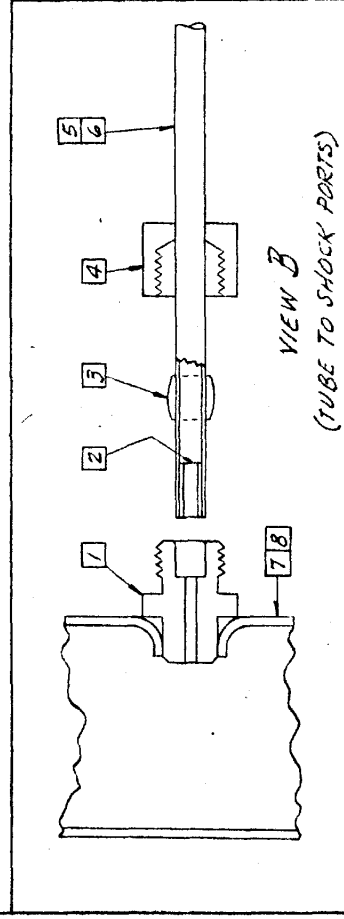
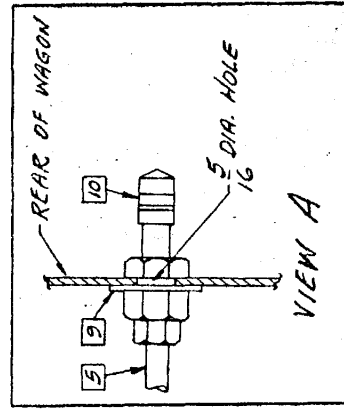
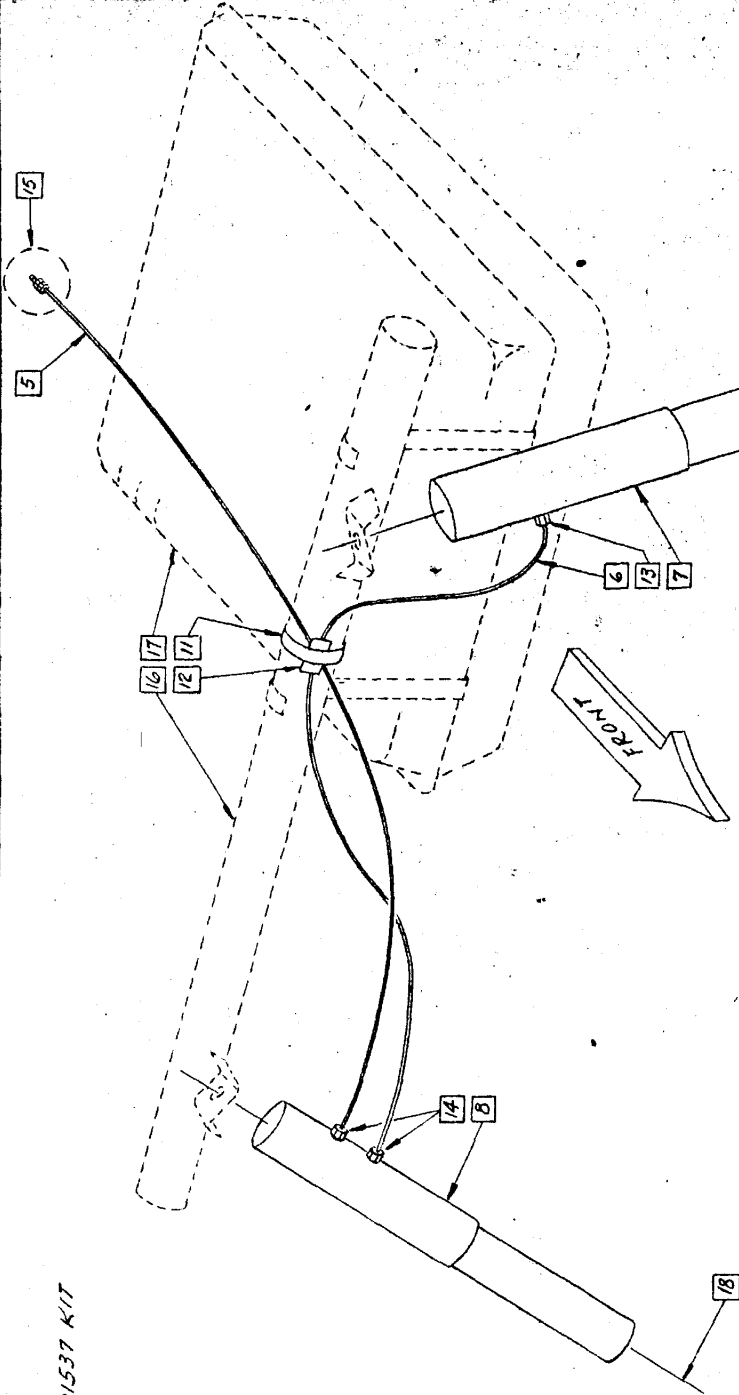
7-2-6-65

CHASSIS

SHOCK ABS.-REAR - RAIL CAR WITH AXLE CONVERSION

MODEL B-12W

701537 KIT



- 1 UNION
- 2 METAL INSERT
- 3 COMPRESSION SLEEVE
- 4 TUBE NUT
- 5 NYLON FILL TUBE (65" LONG)
- 6 NYLON CROSS OVER TUBE (29" LONG)
- 7 L.H. SHOCK ABS.
- 8 R.H. SHOCK ABS.
- 9 RUBBER WASHER
- 10 FILL VALVE
- 11 80345 CLAMP
- 12 80526 SHIM
- 13 SINGLE PORT - SEE VIEW "B"
- 14 DUAL PORT - SEE VIEW "B"
- 15 FILL VALVE - SEE VIEW "A"
- 16 FRAME CROSS-MEMBER - TUBULAR
- 17 GAS TANK
- 18 SHOCK MTG HARDWARE - SEE GI-237