

REVISED 4-30-64 / 5 2-65 / 1-10-67-68 / 1-10-69-70 / 1-10-71-72 / 1-10-73-74 / 1-10-75-76 / 1-10-77-78 / 1-10-79-80 / 1-10-81-82 / 1-10-83-84 / 1-10-85-86 / 1-10-87-88 / 1-10-89-90 / 1-10-91-92 / 1-10-93-94 / 1-10-95-96 / 1-10-97-98 / 1-10-99-100

DATE 1-31-64

MODEL B-11 B-12 CHASSIS B-12E

APPLICABLE TO BILING BIKES

CLUTCH PARTS LIST (SEE PAGE 16-B)

CHECK MOTOR'S COOR. KALAMAZOO MICH.

SHEET NO. 2-1

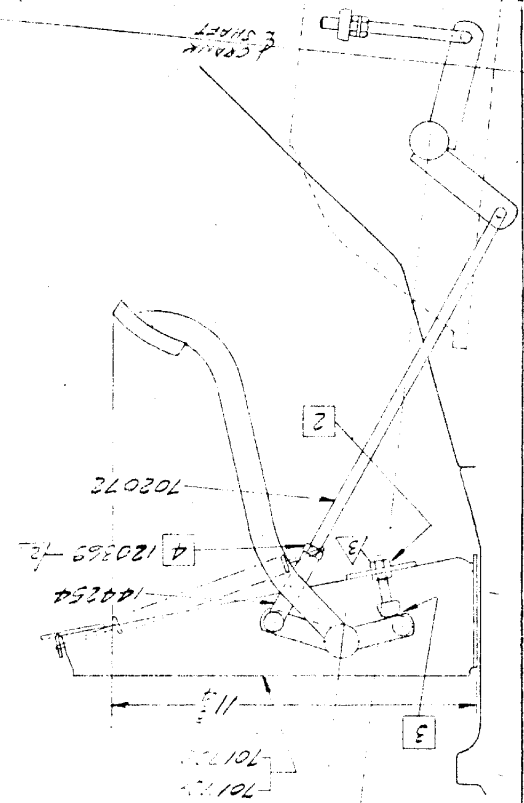
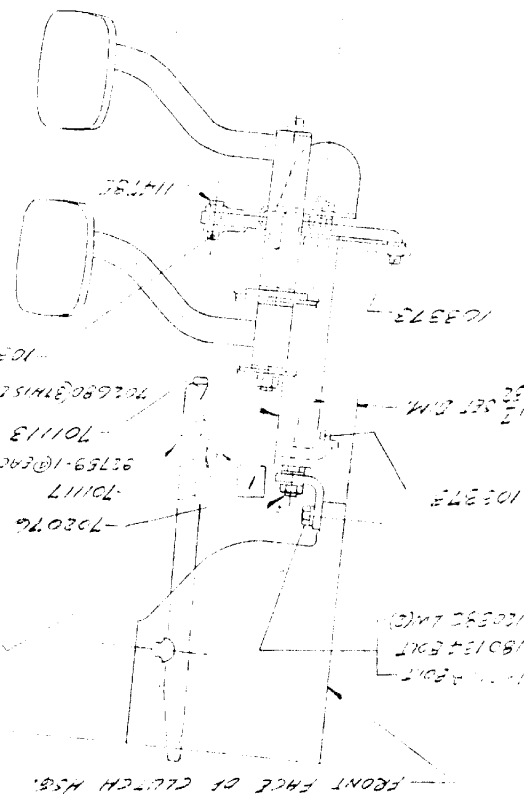
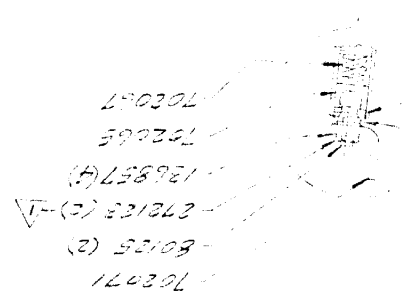
1-31-64

B-11 B-12 CHASSIS B-12E

APPLICABLE TO BILING BIKES

INSTALLATION FOOTNOTE FOR NEW CLUTCHES
 WITH TOKE JUST CONTACTING CLUTCH FINGERS
 ADJUST AT 1 TO OBTAIN 1/2 SET DIM.
 WITH CLUTCH PEDAL SET AT 11 1/2" ADJUST STOP
 AT 2 (REF. THIS IS A BENCH ADJUSTMENT)
 WITH .187" THICK GAGE AT 3 & ROD 702072
 HELD DOWN BY HAND AGAINST CLUTCH FINGERS
 ADJUST AT 4 TO INSTALL CLUTCH PIN 113715

1-30-55 165 ST
 1-17-58 165 ST
 1-9-59 165 ST



FRONT FACE OF CLUTCH HSB.

J 50
K 54