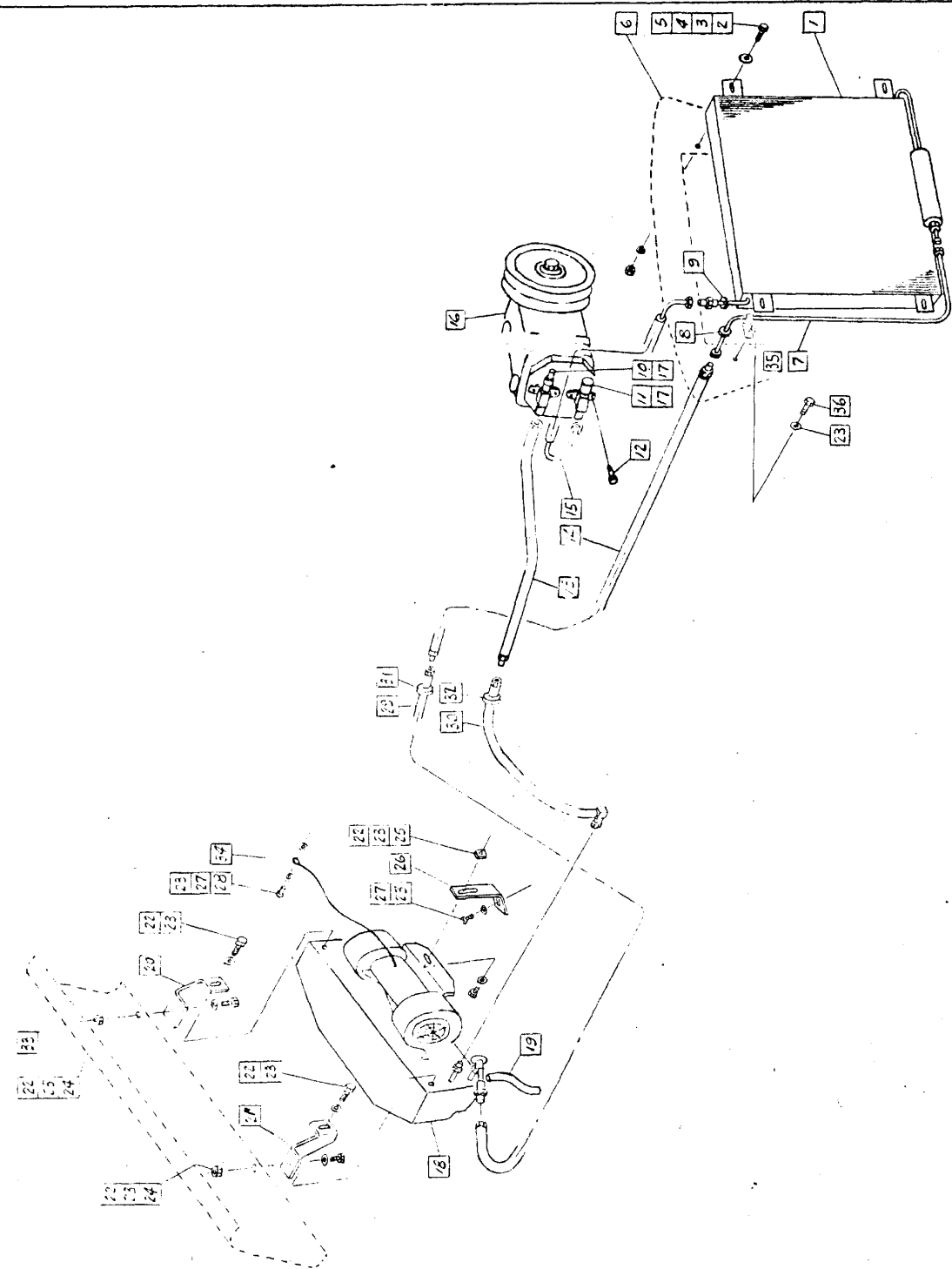


14
117
112

REVISED 6-9-64 JUK JUK
19-23-64/10-25-65/13-16-66-2-67
WA

MODEL B-11	DATE	CHECKER MOTORS CORP., KALAMAZOO, MICH.	SHEET NO.
ALSO APPLIES TO	4-28-64	GRAPHIC ILLUSTRATION	223A
		AIR CONDITIONER EVAPORATOR, CONDENSER, COMPRESSOR & PIPES	CAB ONLY



- 1 701227 - CONDENSER ASSEM.
- 2 121887 - BOLT (4)
- 3 626322 - WASHER (4)
- 4 120380 - L.W. (4)
- 5 120375 - NUT (4)
- 6 RADIATOR SUPPT. - REF.
- 7 701258 - TUBE ASSEM.
- 8 702361 - GROMMET - INSTALL IN 6
- 9 702324 - GROMMET - INSTALL IN 6
- 10 97323 - VALVE ASSEM. - SUCTION
- 11 91772 - VALVE ASSEM. - DISCHARGE
- 12 138226 - SCREW (4)
- 13 701260 - HOSE ASSEM.
- 14 701259 - HOSE ASSEM.
- 15 701233 - HOSE ASSEM.
- 16 97666 - COMPRESSOR - REF.
- 17 98376 - GASKET (2)
- 18 701271 - EVAPORATOR ASSEM.
- 19 702325 - HOSE - DRAIN
- 20 98587 - BRKT.
- 21 98588 - BRKT.
- 22 120254 - BOLT (5)
- 23 120392 - WASHER (5)
- 24 271172 - NUT & L.W. ASSEM (2)
- 25 94810 - NUT RETAINER
- 26 94796 - BRKT.
- 27 161711 - SCREW (2)
- 28 174316 - L.W.
- 29 701268 - TUBE ASSEM.
- 30 701266 - TUBE ASSEM.
- 31 702376 - GROMMET - INSTALL IN DASH
- 32 626556 - GROMMET - INSTALL IN DASH
- 33 INSTRUMENT PANEL - REF
- 34 GROUND LEAD - PART OF 18
- 35 702414 - CLIP
- 36 948655 - SCREW

REVISED: 6-28-66 [Signature]

CHECKER MOTORS CORP., KALAMAZOO, MICH.

MODEL 8-12WB	DATE 5-6-65	DRAWN BY J. S. G. G.	SHEET NO 223-C
CHASSIS 8-12WB			
AIR COND. V-8 ENG. - AERDEUS			
GRAPHIC ILLUSTRATION			

OBSOLETE

SEE SHEET # 223

REVISED 9-2-65/3-1-66 K/

DATE

MODEL A-12 WIG 48 EYAR AT DASH

4-20-65

MOSES (N/YORK COMPRESSOR)

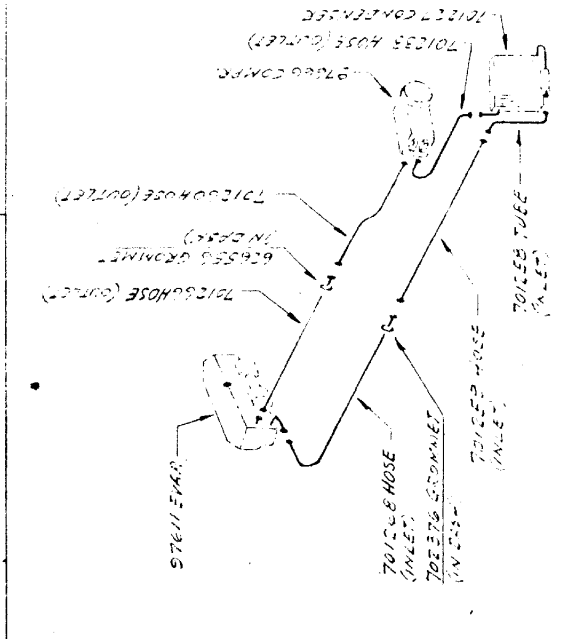
GRAND ILLUSTRATION

ENGINE PARTS CORP. 400 W. 40th ST. N.Y.C. 18, N.Y.

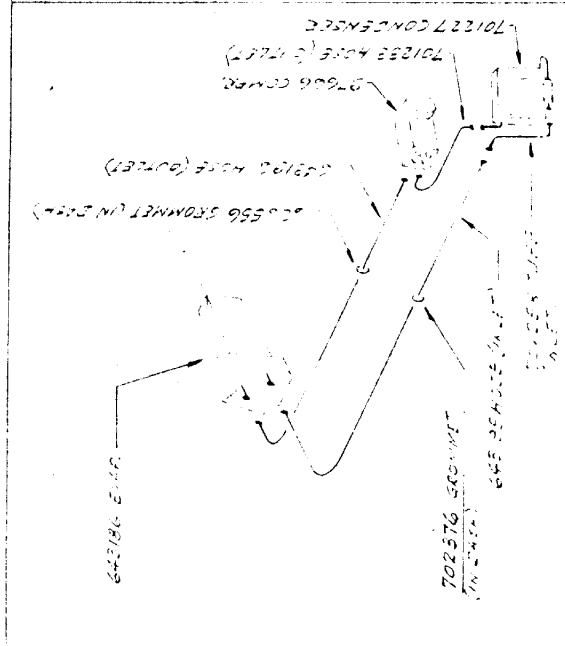
Part JK 4-29-65

SHEET NO

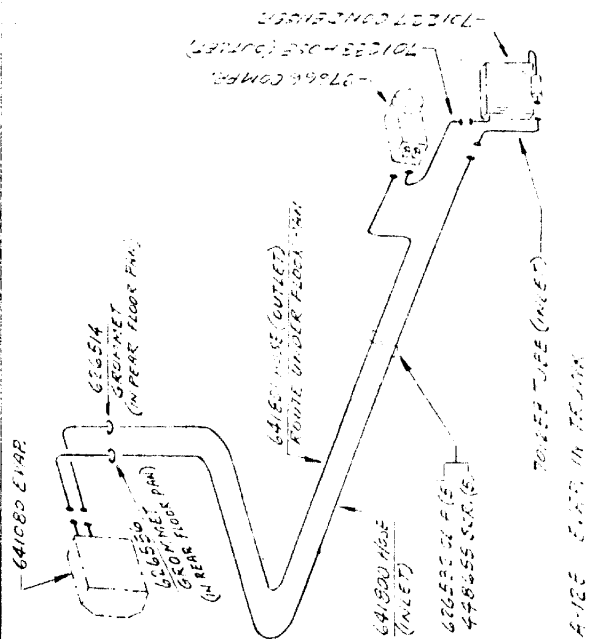
223-E



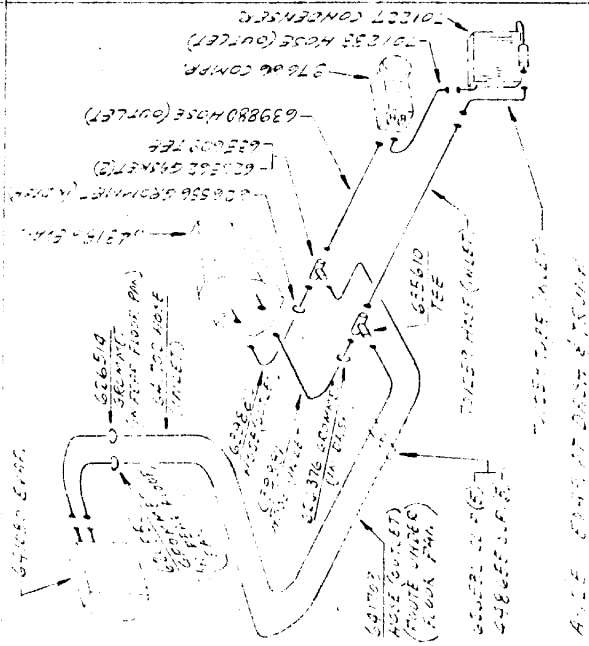
B-11 EVAP. AT DASH



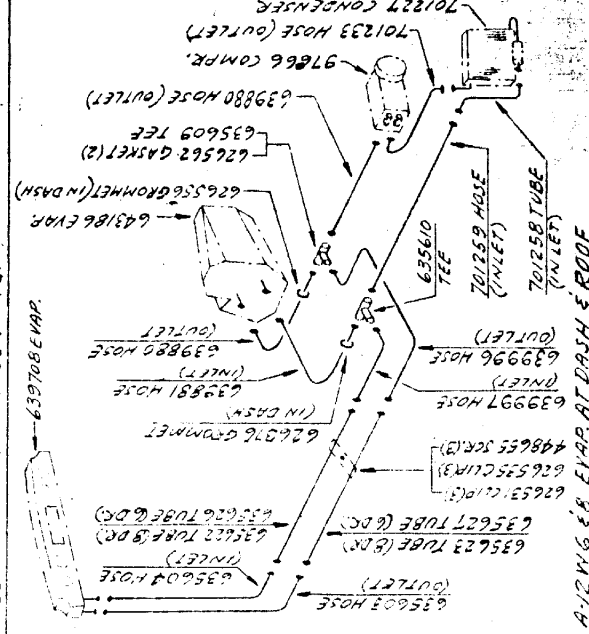
B-11 EVAP. AT DASH



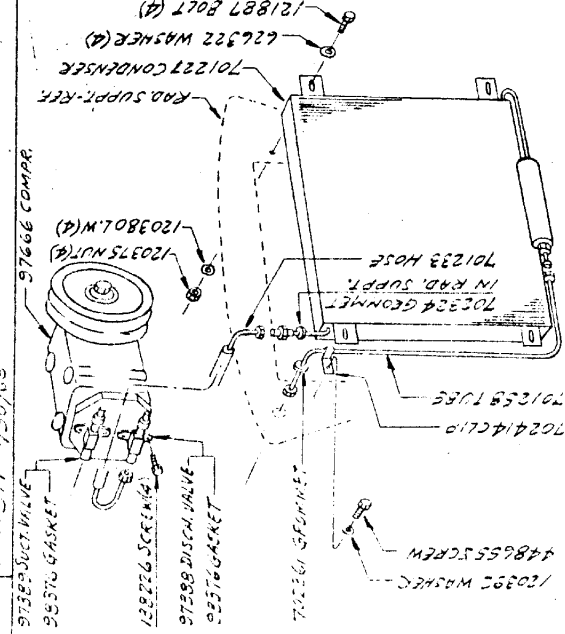
B-11 EVAP. AT DASH



B-11 EVAP. AT DASH



B-11 EVAP. AT DASH



B-11 EVAP. AT DASH

CHECKER MOTORS CORP., KHAMARZOO,

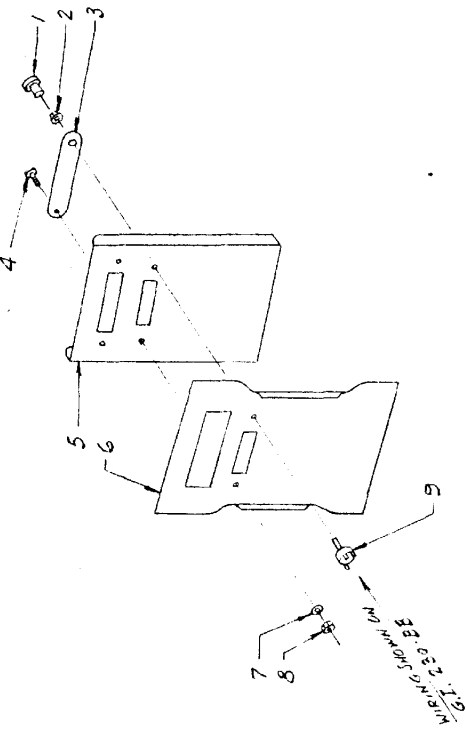
MODEL A-12E

DATE 10-29-65

GRAPHIC ILLUSTRATION

SHEET No. 223-G

CHK: KERRY
 APP'D: [Signature] 10/30/65
 AIR COND - DUAL (FRONT CONTROLS & REAR FAN CONTROL)

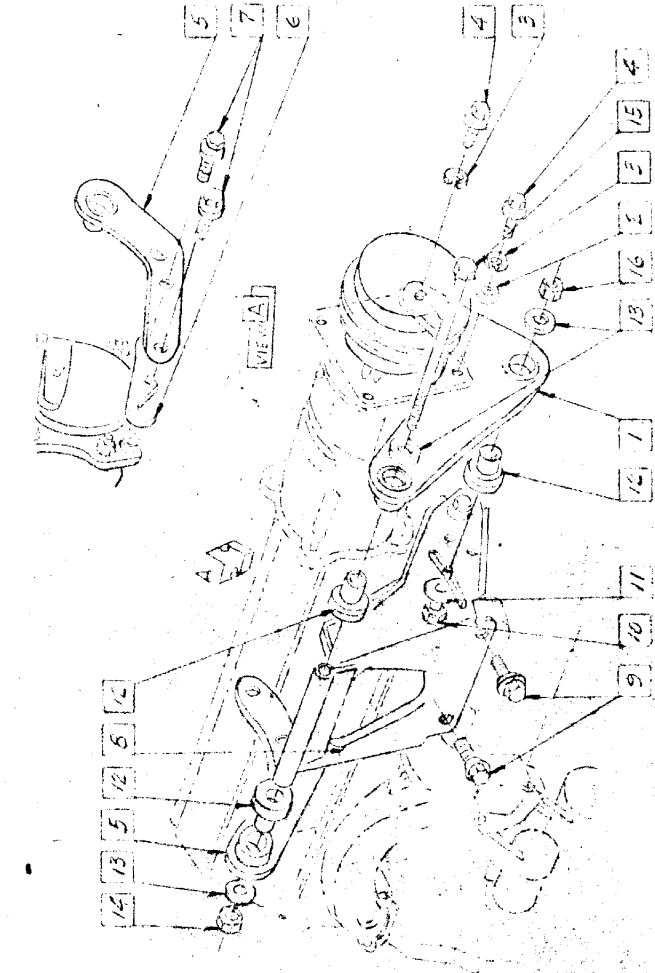


NOTE:-
 ASSEMBLE PER G.I. 223-B & D
 EXCEPT REAR CONTROLS TO BE
 AS SHOWN ON THIS SHEET

1	631960	KNOB & SCREW ASSEM.	1
2	627297	PLATE	1
3	640466	PLATE	1
4	626537	SCREW	1
5	645009	PANEL - FRONT (REAR SERIAL CENTER)	1
6	642006	SUPPORT	1
7	720117	L.W.	1
8	720614	NUT	1
9	639570	SWITCH ASSEM.	1
10			1

MODEL NO. 300
 DATE 12/23/66

MANDATORY ASSEMBLY SEQUENCE FOR
 DETERMINING PROPER SHIM REQUIREMENTS
 1- POSITION FRONT MTD. BRKT. TO COMPRESSOR
 & TORQUE BOLTS.
 2- ASSEMBLE REAR MTD. BRKT. TO COMPRESSOR
 & START BOLTS.
 3- POSITION FRONT & REAR BRKTS. RELATIVE TO
 SUPPORTS ON ENGINE.
 4- ADD SHIMS BETWEEN REAR BRKT. & COMPRESSOR
 AS REQUIRED.
 5- TORQUE (REAR BRKT. TO COMPRESSOR) BOLTS.



- 1 701814 BRKT. ASSEM.-FRONT
- 2 100593 WASHER
- 3 120214 SHIM (2)
- 4 442284 BOLT (2)
- 5 701815 BRKT. ASSEM.-REAR
- 6 702986 SHIM (AS REQD)
- 7 274840 SCREW (2)
- 8 701818 SUPPORT ASSEM.
- 9 274902 SCREW (2)
- 10 180130 BOLT
- 11 4426477 WASHER
- 12 701816 BUSHING (3)
- 13 120394 WASHER (3)
- 14 442828 NUT-LOCK
- 15 626775 BOLT
- 16 442827 NUT-LOCK

CHECKER MOTORS CORP., KALAMAZOO, MICH.

GRAPHIC ILLUSTRATION
 DATE 12/23/66
 A/C COMPRESSOR MTS. VS. VS (WITH A.I.R. PUMP) FRIGIDRAKE

DATE 12/23/66

MODEL AHE A1ZE

SHEET NO: 223-K

1 ASSEMBLY AS SHOWN ON GT-2233

2 702959 SPACER (2)

3 187070 BOLT

4 701674 PUMP ASSEM. - A.I.R.

5 702954 BOLT

6 442827 NUT

7 702976 BRACE

8 702955 WASHER

9 9419054 BOLT

10 9422277 NUT

11

12 701008 FLUG

13 701004 HOUSING ASSEM.

14 FURNISHED ON ENGINE

