

CHEVROLET MOTORS CORP. YALAMAZOO, MICH.

UNIT - OPERATING
 DATE: D.E. 12/29/56
 SHEET NO.

GRAPHIC ILLUSTRATION
 A/C COMPRESSOR M/TB. 7-B (M/B. 24. 20. 17. 15. 13. 11. 9. 7. 5. 3. 1)

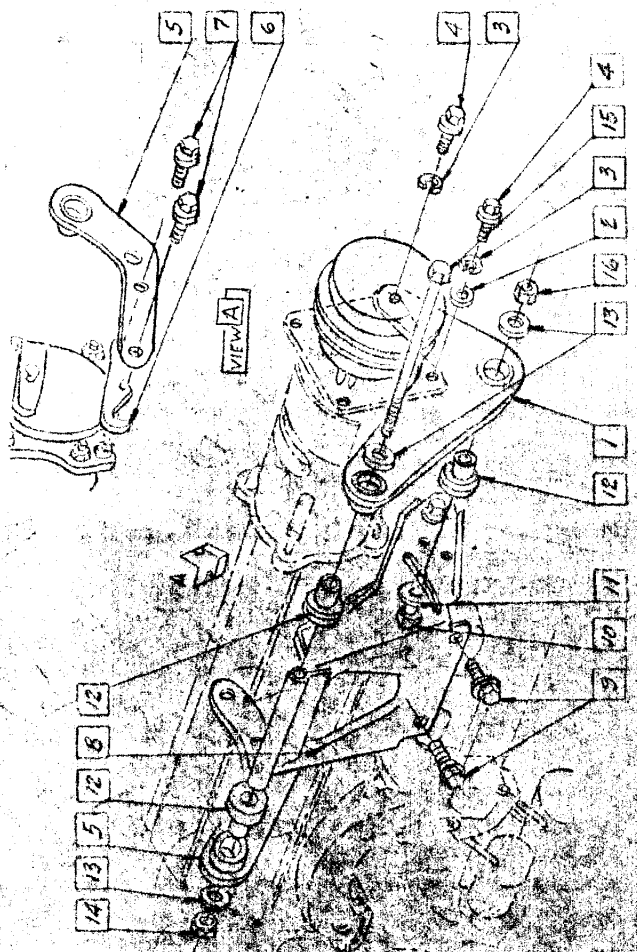
DATE
 12/23/66

CHASSIS

BR. 411
 MODEL 128, 132
 VIEW

MANDATORY ASSEMBLY SEQUENCE FOR
 DETERMINING REAR BRKT. ADJUST. REQUIREMENTS
 REASSEMBLE FRONT M/TB. BRKT. TO COMPRESSOR
 1- TORQUE BOLTS.
 2- ASSEMBLE REAR M/TB. BRKT. TO COMPRESSOR
 3- START BOLTS.
 4- POSITION FRONT & REAR BRKT. RELATIVE TO
 SUPPORTS ON ENGINE.
 5- ADD SHIMS BETWEEN REAR DEPT. & COMPRESSOR
 AS REQUIRED.
 6- TORQUE (REAR BRKT. TO COMPRESSOR) BOLTS.

- 1 701B14 BRKT. ASSEM. - FRONT
- 2 120393 WASHER
- 3 120214 L.W. (2)
- 4 444684 BOLT (2)
- 5 701B15 BRKT. ASSEM. - REAR
- 6 702B16 SHIM (AS REQD)
- 7 274000 SCREW (2)
- 8 274000 SCREW (2)
- 9 274000 SCREW (2)
- 10 180180 BOLT
- 11 542E477 WASHER
- 12 701B16 BUSHING (3)
- 13 180B84 WASHER (3)
- 14 442828 NUT-LOCK
- 15 626775 BOLT
- 16 442827 NUT-LOCK



(1) ADDL. COP. TO R. SHEET 410