

300

SHEET No.

DWM KÉREVEY  
CHK H. B. 2/17/66  
APP'D. JN 2/17/66

CHUCKER MOTORS CORP., KALAMAZOO, MICH.

GRAPHIC ILLUSTRATION

DOOR-FRONT - MANUAL WINDOW CONTROL

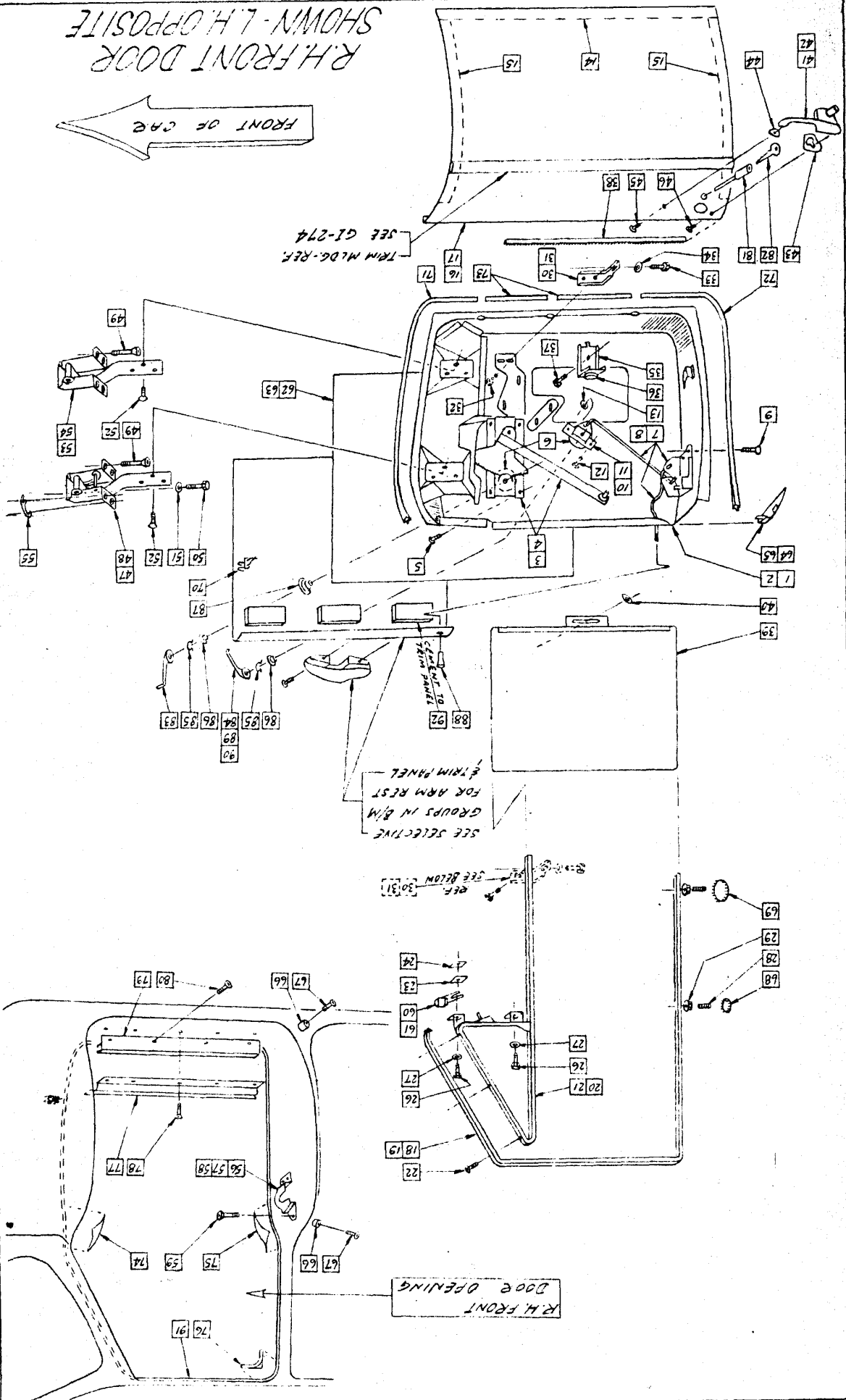
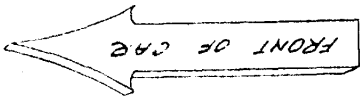
DATE

2-19-66

BODY

ALL MODELS

R.H. FRONT DOOR  
SHOWN - L.H. OPPOSITE



(1) ADD'L. COPY BODY ENGR.

PART NO	PART NAME	QUANTITIES GIVEN ARE FOR (1) L.H. DOOR & (1) R.H. DOOR						
		A12	A11	A12	A12M	A1E	A1ZE	A1Z
641235	Panel Assem-Front Door Inner Welded LH	1						
641236	Panel Assem-Front Door Inner Welded RH	1						
639089	Regulator Assem-Front Door Window LH	1						
639090	Regulator Assem-Front Door Window RH	1						
187987	Screw & I/W Assem-#12-24 x 1/2 R.H.C.R.Mach	4						
642809	Seal-Door Beak & Remote Control	2						
639129	Lock & Rod Assem-Front Door LH	1						
639130	Lock & Rod Assem-Front Door RH	1						
445638	Screw & I/W Assem-#12-24 x 1/2 P.H.C.R.Mach	3						
639161	Control Assem-Door Remote LH	1						
639162	Control Assem-Door Remote RH	1						
187987	Screw & I/W Assem-#12-24 x 1/2 RHCR Mach	2						
626485	Nut-5/32 Self Threading	1						
640434	Filler-Door-Bottom	1						
640432	Filler-Door-Side	2						
640131	Panel-Front Door Outer LH	1						
640132	Panel-Front Door Outer RH	1						
643207	Frame Assem-Frt. Door Upper LH	1						
643208	Frame Assem-Frt. Door Upper RH	1						
641201	Vent Window Assem-Front LH	1						
641202	Vent Window Assem-Front RH	1						
626632	Scr. & I/W Assem-#8-32 x 1/2 P.H.C.R.Tap	3						
630755	Shim-Frt. Door Vent Window	.....						AS REQ'D
636340	Spacer-Vent Window	.....						AS REQ'D
121887	Bolt-1/4-20 x 3/4 Hex. Hd.	2						
174916	Lockwasher-1/4 Int. Ex. Tooth	2						
626630	Screw-1/4-20 x 5/8 Headless Set	2						
626631	Locknut-1/4-20 "White"	2						
631359	Brkt. Assem-Frt. Door Div. Bar Lower Mfg.	1						
631360	Brkt. Assem-Frt. Door Div. Bar Lwr. Mfg. RH	1						
9414204	Screw-1/4-20 x 3/8 Hex. Ser. W/Hd. Mach	2						
121887	Bolt-1/4-20 x 3/4 Hex. Hd.	1						
174916	Lockwasher-1/4 Int. & Ext. Tooth	1						
631325	Bracket Assem-Door Window Stop	1						
622702	Bumper-Rubber	1						
626449	Screw & I/W Assem-1/4-20 x 1/2 Hex. W/Hd.	1						
631333	W/Strip Assem-Frt. Door Wind. Outer	1						
633907	Glass & Channel Assem-Frt. Door	1						
625932	Retainer-Window Reg. Stud.	1						
631369	Handle Assem-Door Lock LH	1						
631370	Handle Assem-Door Lock RH	1						
630491	Gasket-Door Handle-Front	1						
630492	Gasket-Door Handle-Rear	1						
444271	Screw & I/W Assem-#10-32 x 3/8 R.H.C.R. Mach	1						

ALL MODELS  
 BODY  
 DATE 2-19-66  
 DOOR - FRONT  
 MANUAL WINDOW CONTROL  
 GRAPHIC ILLUSTRATION  
 CHESTER MOTORS CORP., KALAMAZOO, MICH.  
 DWG. XERNEY  
 CHK. H.B. 5/17/66  
 APP'D. BY 3/17/66  
 SKET NO. 300-A



CHEVROE MOTORS CORP., Kalamazoo Mich.

GRAPHIC ILLUSTRATION SHEET No. 300-C

DRG. KERNEY  
ENR. HRS. 2 17 1/2  
APPROV. SA. 2/7/66

DOOR - FRONT MANUAL WINDOW CONTROL

DATE 2-19-66

Body

ALL MODELS

PART NO	PART NAME	MODELS							
		ALL MODELS	A11	A12	A12W	A1E	A1E	A1E	A1E
634328	Key-Ign. Door & Glove Comp. (Indiv.)	1							
634329	Key-Ign. Door Deck Lid. Glove Comp. (Alike)	1							
639183	Handle Assem-Regulator	1							
639182	Handle Assem-Remote Control	1							
640130	Clip-Handle Retaining	2							
640170	Washer-Inside Door Handle	2							
640096	Spring-Inside Door Handle Tension	1							
640199	Knob-Inside Door Locking	1							
640190	Knob-Inside Door Locking (Chrome)	1							
643351	Handle Assem-Frt. Door Remote Control LH	1							
643352	Handle Assem-Frt. Door Remote Control RH	1							
643281	Weatherseal Assem-Door Opening (Gray)	1							
643374	Weatherseal Assem-Door Opening Brown	1							
636011	Shim-Roof & Door Trim Panel	3							

QUANTITIES GIVEN ARE FOR (1) L.H. DOOR & (1) R.H. DOOR