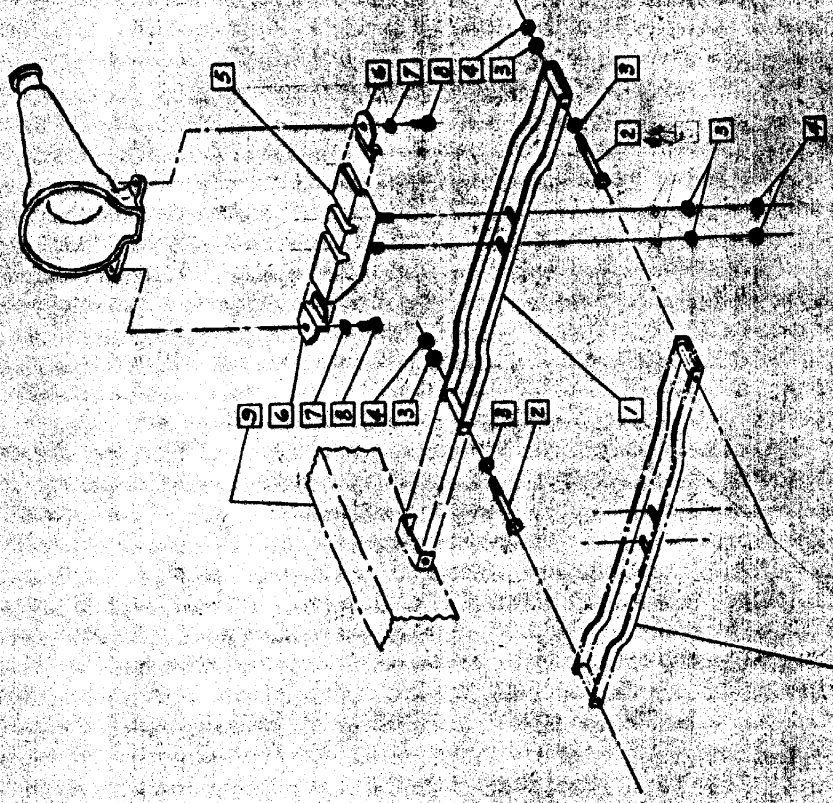


CHECKER MOTORS CORP., KALAMAZOO, MICH.

Model B-11 CHASSIS	DATE	CHECKED BY	220
ALSO B-12	2-23-64	BY	
APPLIES TO B-12E		APPLY TO	
GRAPHIC ILLUSTRATION		DRAFT NO.	
ENGINE MTO. - REAR			

- 1 701099 - SUPPORT ASSEM.
- 2 187612 - BOLT (2)
- 3 120395 - WASHER (6)
- 4 272694 - LOCKWASHER (4)
- 5 701238 - MOUNT & STUD ASSEM.
- 6 702062 - CLAMP (2)
- 7 120384 - L.W. (2)
- 8 180173 - BOLT (2)
- 9 FRAME INNER RAIL - RIGHT SIDE

- △ 25 - 30 LBS. FT.
- △ 25 - 65 LBS. FT. (CAST IRON)
- △ 40 - 50 LBS. FT. (ALUMINUM)



ITEM # SHOWN FOR 6CYL. ENGINE INSTALLATION.  
 ROTATE 180° FOR V-8 ENGINE INSTALLATION.