

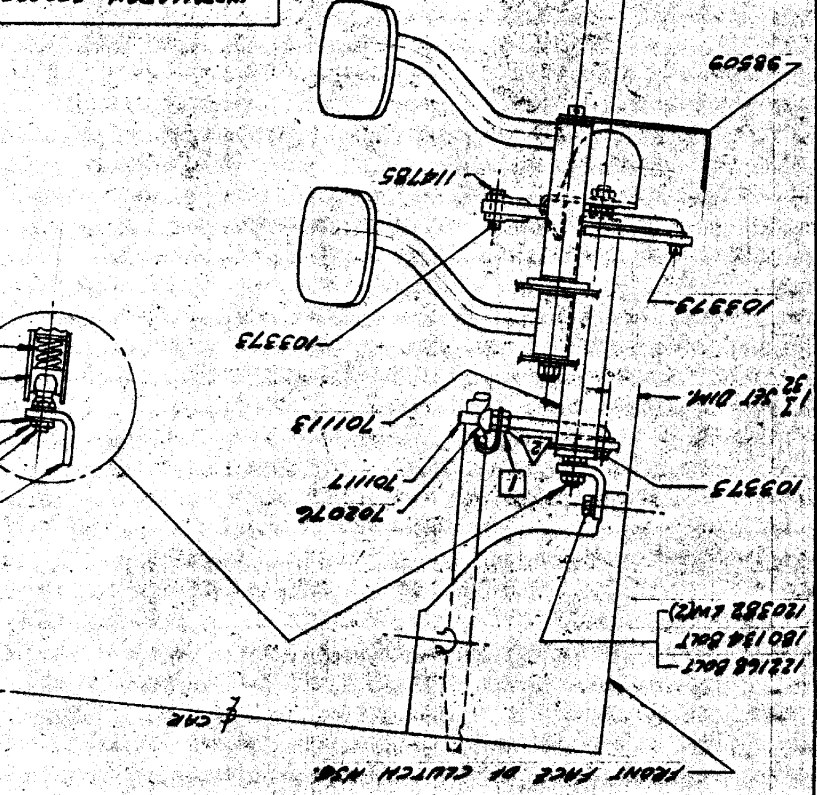
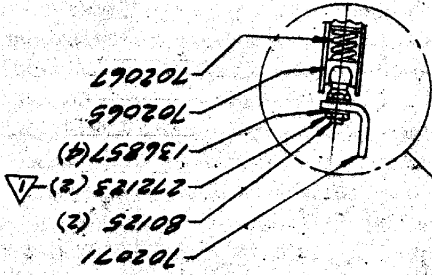
REVISED: 4-30-64

CHECKER MOTORS CORP., KALAMAZOO MICH.

MODEL	B-11	B-12H	CHASSIS	B-12E	DATE	1-31-64	CHECKED BY	227-44	SHEET NO.	212A
ALSO APPLIES TO										
GRANDDUC VILBERTSON CLUTCH INSTALLATION - V-8 ENGINE GRAPHIC ILLUSTRATION										
APPROV'D 3-1-64										

INSTALLATION PROCEDURE FOR NEW CLUTCH-V8
 WITH YOKE JUST CONTACTING CLUTCH FINGERS
 ADJUST AT 1 TO OBTAIN $1\frac{1}{2}$ " SET DIM.
 WITH CLUTCH PEDAL SET AT $11\frac{1}{16}$ " ADJUST STOP
 AT 2 (REF. THIS IS A BENCH ADJUSTMENT.)
 WITH .187 THICK GAGE AT 3 ϕ ROD 702072
 HELD DOWN BY HAND AGAINST CLUTCH FINGERS
 ADJUST AT 4 TO INSTALL CLEARANCE 114785

- ▽ 30 - 35 LBS. FT.
- ▽ 17 - 25 LBS. FT.
- ▽ 9 - 10 LBS. FT.



FRONT FACE OF CLUTCH HUB