

REVISED: A-30-64

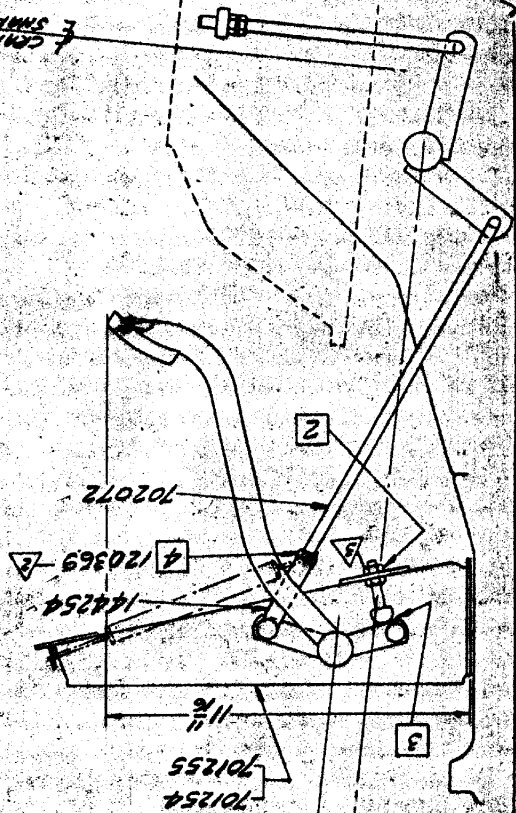
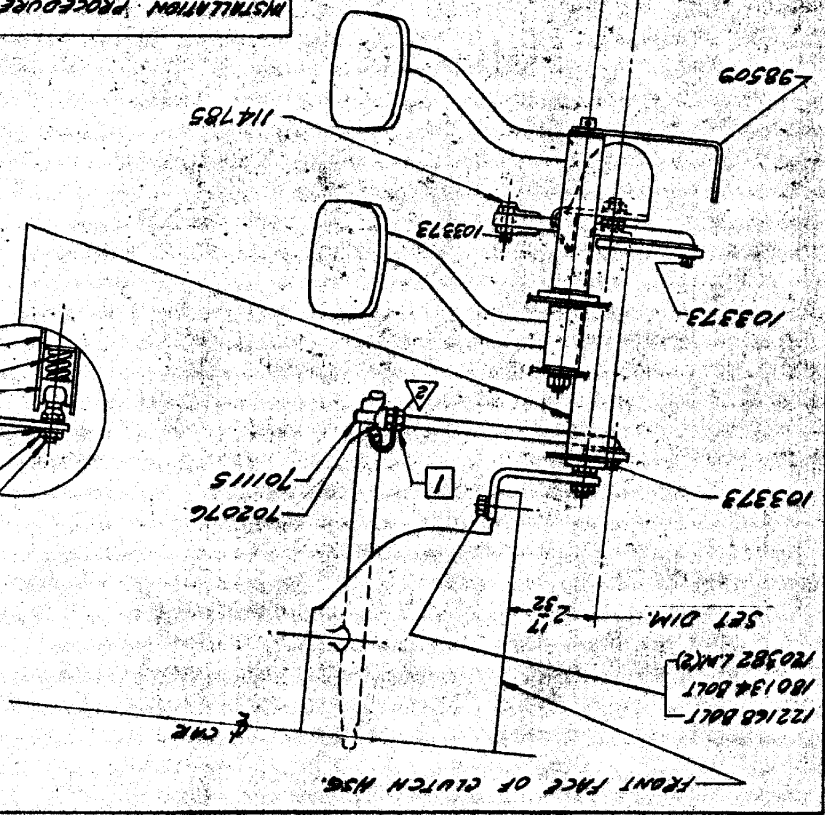
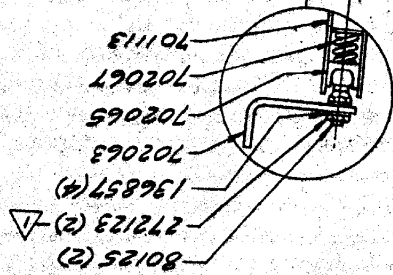
CHECKER MOTORS CORP., KALAMAZOO MICH.

MODEL B-11 CHASSIS B-11	DATE 1-31-64	CHECKED BY P. J. W. 21F2
ALSO APPLIES TO B-12 B-12E		APPROVED BY P. J. W.

GRAPHIC ILLUSTRATION  
CLUTCH INSTALLATION - 6 CYL. ENGINE  
GRAPHIC ILLUSTRATION

INSTALLATION PROCEDURE FOR NEW CLUTCH-6CYL.  
WITH YOKE JUST CONTACTING CLUTCH FINGERS  
ADJUST AT 1 TO OBTAIN  $2\frac{3}{16}$ " SET DIM.  
AT 2 (REF. THIS IS A BENCH ADJUSTMENT)  
WITH CLUTCH PEDAL SET AT  $11\frac{1}{16}$ " ADJUST STOP  
WITH .1875 THICK GAGE AT 3 & ROD 702072  
HELD DOWN BY HAND AGAINST CLUTCH FINGERS  
ADJUST AT 4 TO INSTALL CLEVIS PIN 114785

- ▽ 30-35 LBS. FT.
- ▽ 17-23 LBS. FT.
- ▽ 9-10 LBS. FT.



FRONT FACE OF CLUTCH HSG.