

CHECKER MOTORS CORP., KALAMAZOO, MICH.

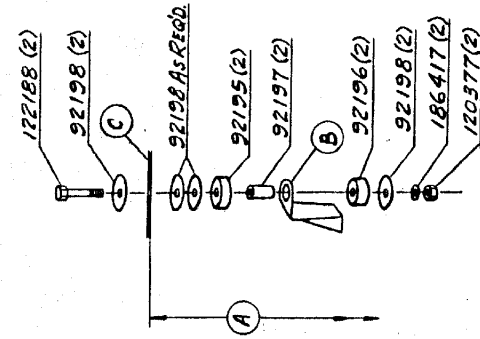
GRAPHIC ILLUSTRATION

BODY MOUNTING

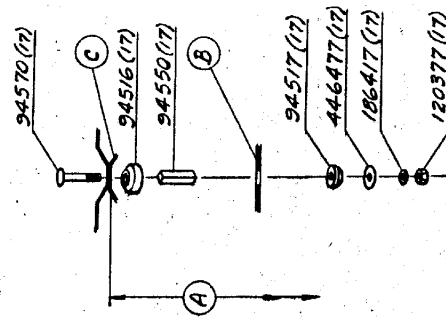
MODEL B-11 B-12W CHASSIS DATE 8-13-64

CHECKED BY G.R.O. 8-6-64 SHEET NO. 257

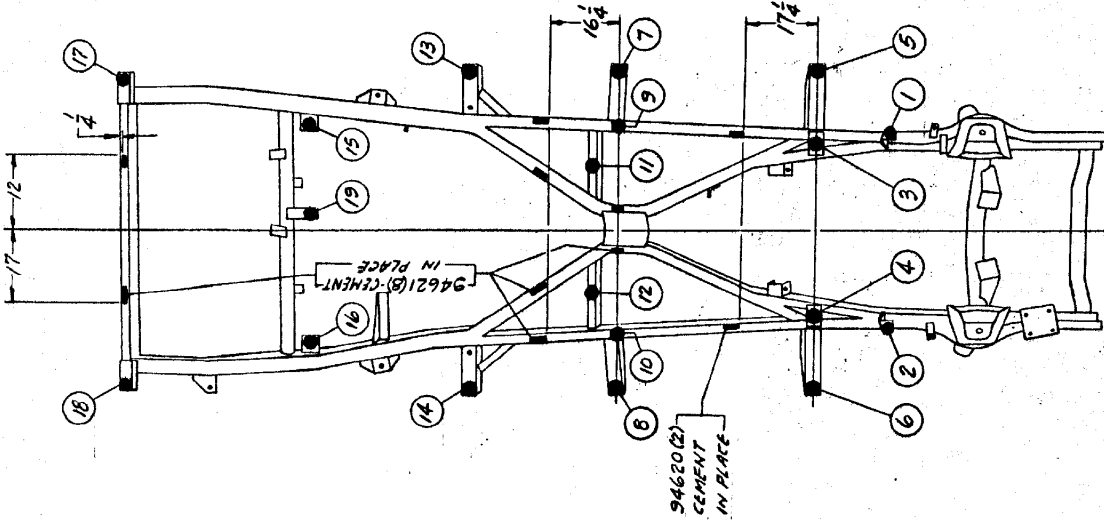
BODY MOUNT LOCATION NUMBER	DIM. (A) DISTANCE TO "O" LINE	PART OF FRAME (B)	PART OF BODY (C)
1f2	10 3/32	94305-6	630371-72
3f4	4 4 1/4	702019	634382
5f6	3 1/32	702010-11	634382
7f8	3 1/4	702010-11	634382
9f10	4	701017-18	640555
11f12	5 15/16	702012	633222
13f14	3 1/4	95637-8	634387-88
15f16	15 7/8	94171	634386
17	10 1/32	94520	634386
18	10 1/32	94520	634384
19		94709	634386



BODY MOUNTS 1 f 2



BODY MOUNTS 3 THRU 19



TORQUE ALL INSULATOR M.T.G. NUTS TO 16-20 FT. LB.

15 64

REVISED: 5-28-65

CHECKER MOTORS CORP., KALAMAZOO, MICH.

GRAPHIC ILLUSTRATION

BODY MOUNTING

MODEL B-11 B-12 B-12W
B-11E B-12E
B-12W6 B-12WB

DATE
8-13-64

SHEET NO
257

DRW. J.K. J. 28-65
CHK
APP'D

	B-11-B12-B12W	B-11E-B12E	B-12W6	B-12WB
1 94550 SPACER	17 23 25 33			
2 94570 BOLT	17 22 25 33			
3 186417 L.W.	19 25 27 35			
4 120377 NUT	19 25 27 35			
5 92196 INSULATOR	2 2 2 2			
6 92198 WASHER	4 4 4 4			
7 92195 INSULATOR	2 2 2 2			
8 92197 SPACER	2 2 2 2			
9 122188 BOLT	2 2 2 2			
10 94620 SHIM	2 2 2 2			
11 94621 SHIM	8 8 14 18			
12 702417 INSULATOR	17 25 25 33			
13 702416 INSULATOR	17 23 25 33			
14 702415 WASHER	17 23 25 33			
15 446477 WASHER	17 23 25 33			
16 702342 INSULATOR				
17 PART OF BODY				
18 PART OF FRAME				

B-11-B12-B12W SYMM. ABOUT & EXCEPT AS NOTED

B-11E-B12E SYMM. ABOUT & EXCEPT AS NOTED

B-12W6 SYMM. ABOUT & EXCEPT AS NOTED

B-12WB SYMM. ABOUT & EXCEPT AS NOTED

REQ'D. AT (A)

REQ'D. AT (B)