



about centerra  
 operations

reserve & resource summary  
 life of mine summary  
 exploration updates

feb 11  
 Kara Beldyr JV  
 nov 10  
 jul 10  
 apr 10  
 feb 10  
 dec 09  
 oct 09  
 jul 09  
 jun 09  
 apr 09  
 feb 09  
 oct 08  
 jul 08  
 may 08  
 feb 08

kumtor

mine operations:

kumtor  
 berce

development:

gatsaurt

investors

news

sustainable development

corporate governance

printable version

Copyright © 2006 Centerra Gold

Disclaimer

Privacy Policy

Glossary

SEDAR

World Gold Council

KITCO

# Exploration

## Kumtor

SB Zone; Section 14



[View Detailed Map](#)  
 PDF (62.1 KB)

NB Zone; Section 166



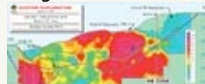
[View Detailed Map](#)  
 PDF (68.8 KB)

SB Zone; Section 26



[View Detailed Map](#)  
 PDF (61.0 KB)

Longitudinal Section



[View Detailed Map](#)  
 PDF (387 KB)

2005 Drilling Plan Map



[View Detailed Map](#)  
 PDF (134 KB)


### Kumtor Project Drilling Results

(December 01, 2005 to January 16, 2006)

Drill Hole Number	Location	Drill Section	Zone	From (m)	To (m)	Core Length (m)	Au (g/t)
<b>D1031</b>	South end	22	SB zone	290.8	368.1	77.3	7.39
				<b>incl. 309.4</b>	<b>335.5</b>	<b>26.1</b>	<b>17.43</b>
				382.5	390.3	7.8	1.84
				<b>incl. 336.4</b>	<b>339.5</b>	<b>3.1</b>	<b>16.60</b>
<b>D1032</b>	South end	26	SB zone	216.8	218.3	1.5	3.81
				<b>incl. 252.8</b>	<b>282.5</b>	<b>29.7</b>	<b>23.59</b>
				246.6	297.0	50.4	15.89
				306.0	317.0	11.0	2.04
				331.8	342.5	10.7	5.76
				<b>incl. 336.4</b>	<b>339.5</b>	<b>3.1</b>	<b>16.60</b>
<b>D1040</b>	South end	22	SB zone	364.8	456.4	91.6	6.36
				<b>incl. 369.0</b>	<b>391.7</b>	<b>22.7</b>	<b>18.43</b>
				461.4	465.4	4.0	1.81
				478.5	492.5	14.0	1.75
<b>D1030A</b>	South end	14	SB zone	343.1	390.0	46.9	5.05
				<b>incl. 349.0</b>	<b>366.0</b>	<b>17.0</b>	<b>9.35</b>
				396.0	402.0	6.0	1.37
				410.0	421.0	11.0	10.57
				<b>incl. 413.8</b>	<b>418.0</b>	<b>4.2</b>	<b>25.46</b>
				427.0	437.0	10.0	4.46
				442.0	455.2	13.2	3.72
				460.2	463.2	3.0	4.28
<b>D1039A</b>	South end	26	SB zone	380.0	451.0	71.0	10.13
				<b>incl. 413.0</b>	<b>434.0</b>	<b>21.0</b>	<b>24.88</b>
				469.0	470.0	1.0	5.38
				480.0	487.6	7.6	7.62
				<b>incl. 482.5</b>	<b>484.1</b>	<b>1.6</b>	<b>24.76</b>
				491.7	510.3	18.6	1.81

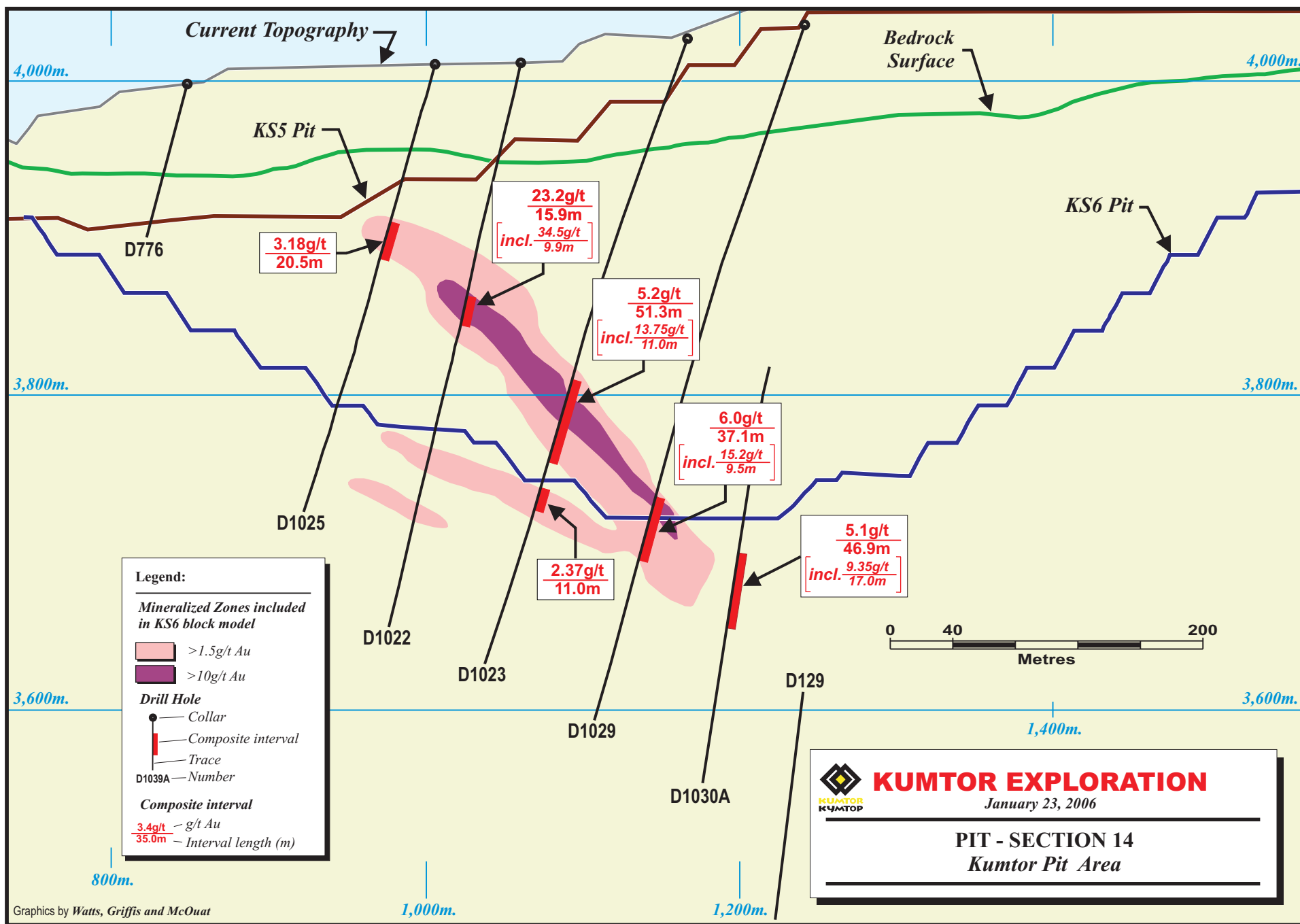
### Notes

Significant mineralized intervals are greater than 1.28 g/t Au  
 Individual assays are top cut to 60 g/t Au prior to composite calculation  
 Inclusions are generally greater than 6.0 g/t Au  
 True widths for mineralized zones are about 70% to 95% of stated down hole interval  
 Tables are current as of January 16, 2006

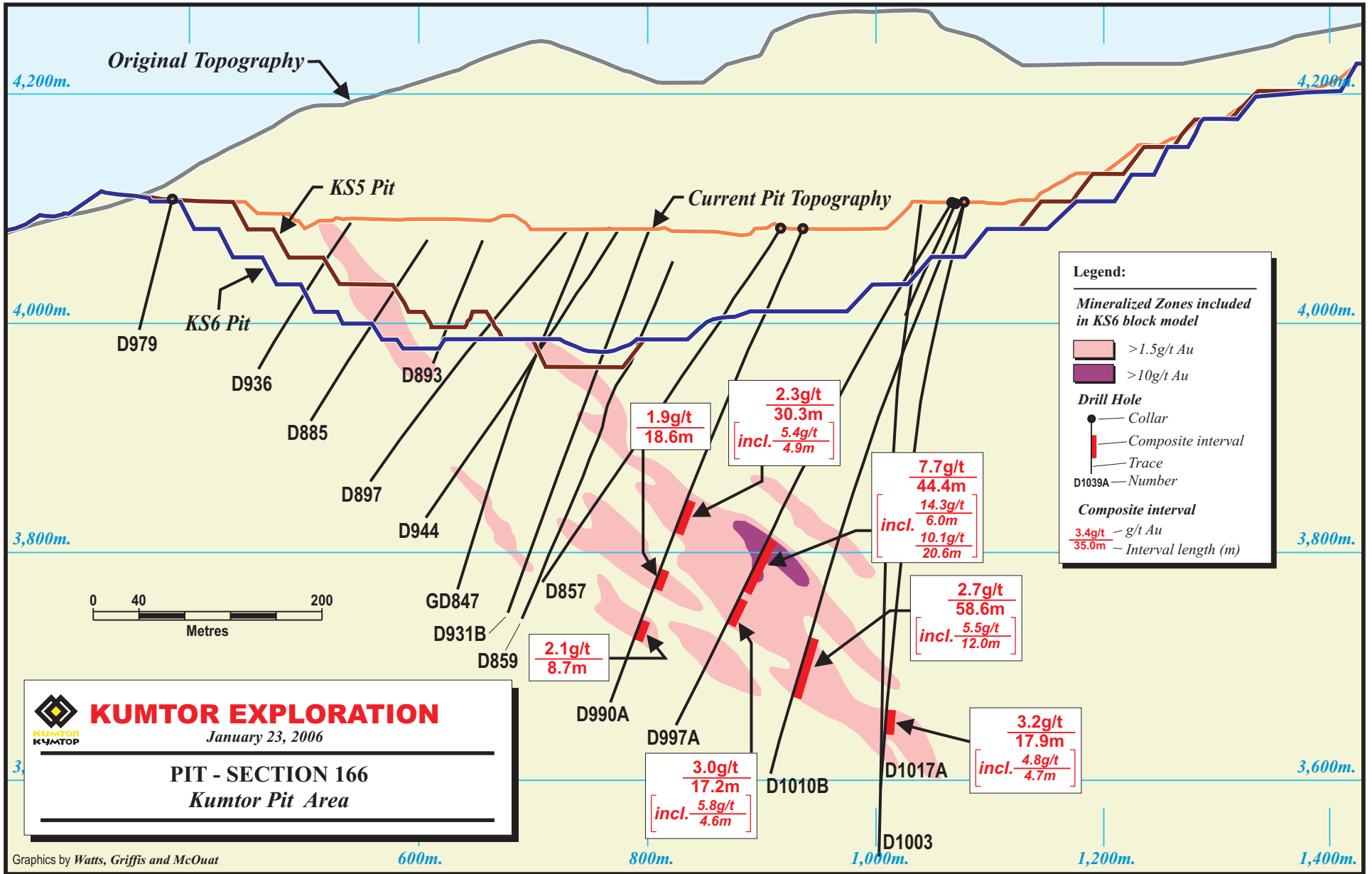


Drill Holes are included in the KS6 resource model (2005 yearend disclosure)

# Kumtor - SB Zone; Section 14



# Kumtor - NB Zone; Section 166



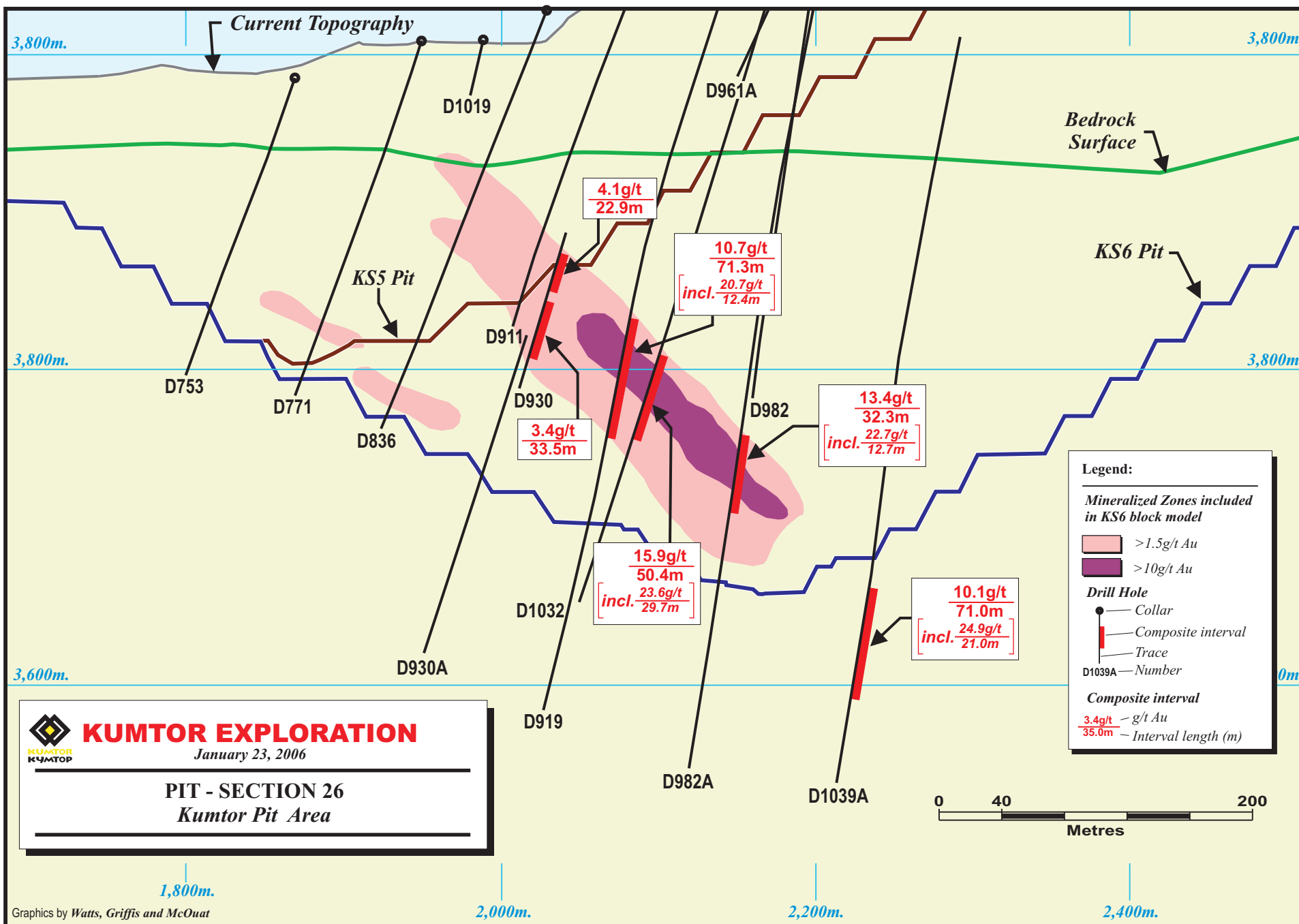
**KUMTOR EXPLORATION**  
 January 23, 2006

---

**PIT - SECTION 166**  
 Kumtor Pit Area

Graphics by Watts, Griffis and McQuat

# Kumtor - SB Zone; Section 26

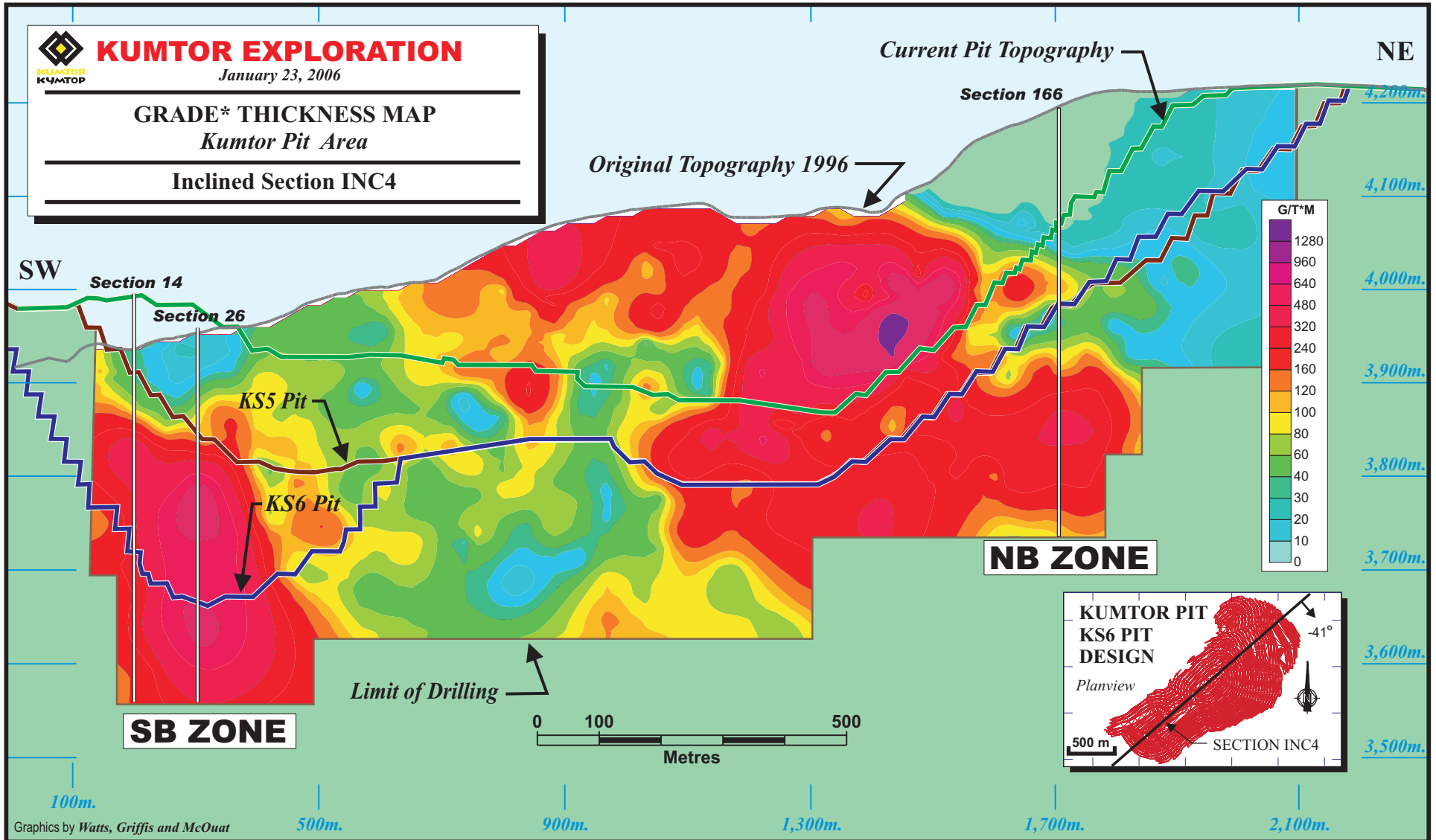


**KUMTOR EXPLORATION**  
 January 23, 2006

---

**PIT - SECTION 26**  
 Kumtor Pit Area

# Kumtor - Longitudinal Section



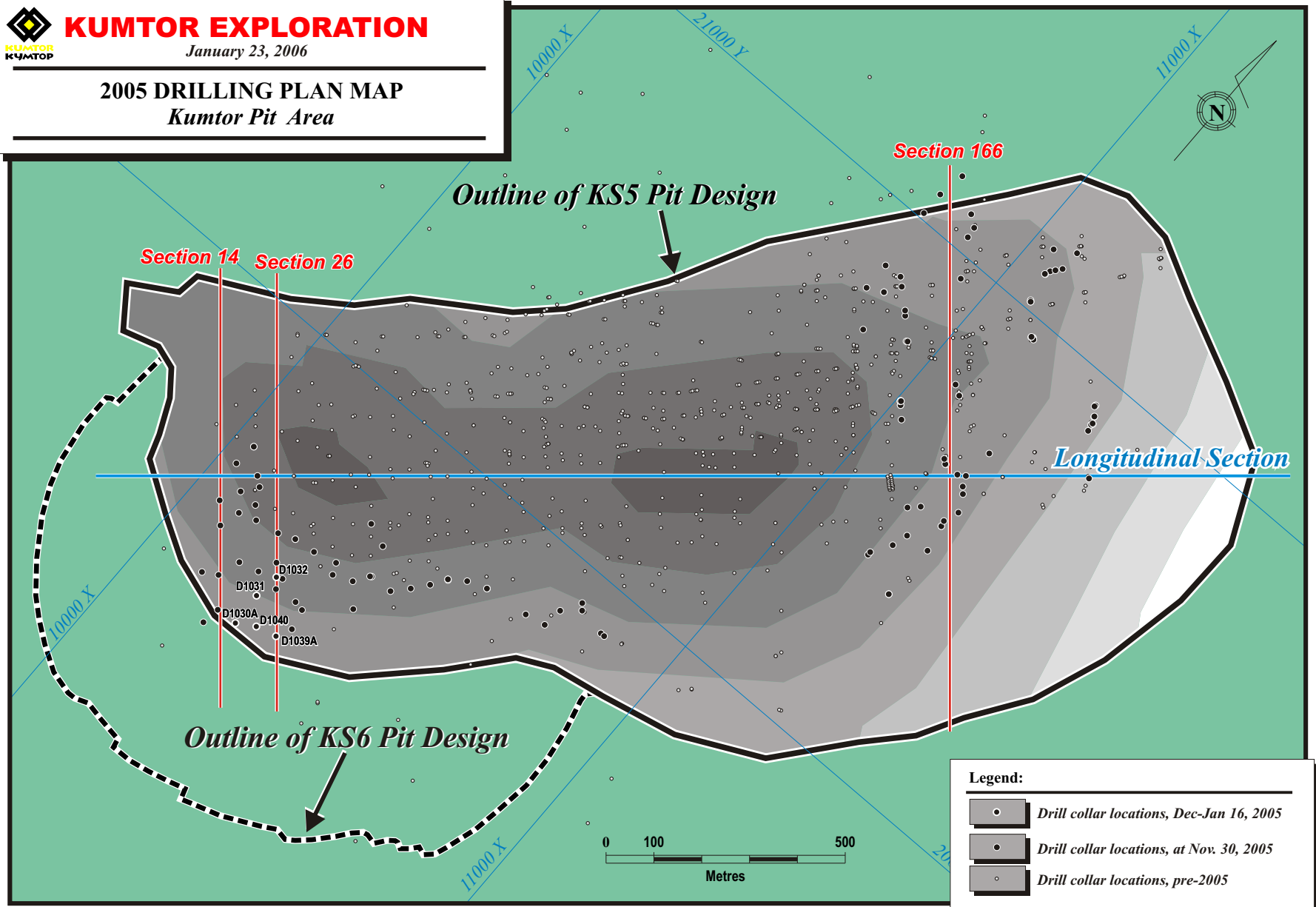
# Kumtor Mine, 2005 Drilling Plan Map



## KUMTOR EXPLORATION

January 23, 2006

### 2005 DRILLING PLAN MAP Kumtor Pit Area



#### Legend:

- Drill collar locations, Dec-Jan 16, 2005
- Drill collar locations, at Nov. 30, 2005
- Drill collar locations, pre-2005