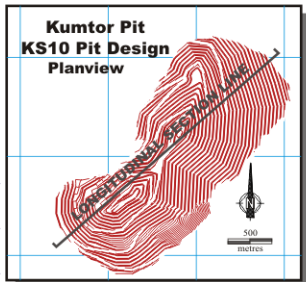




Kumtor – Longitudinal Section



SW



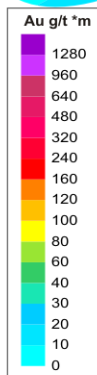
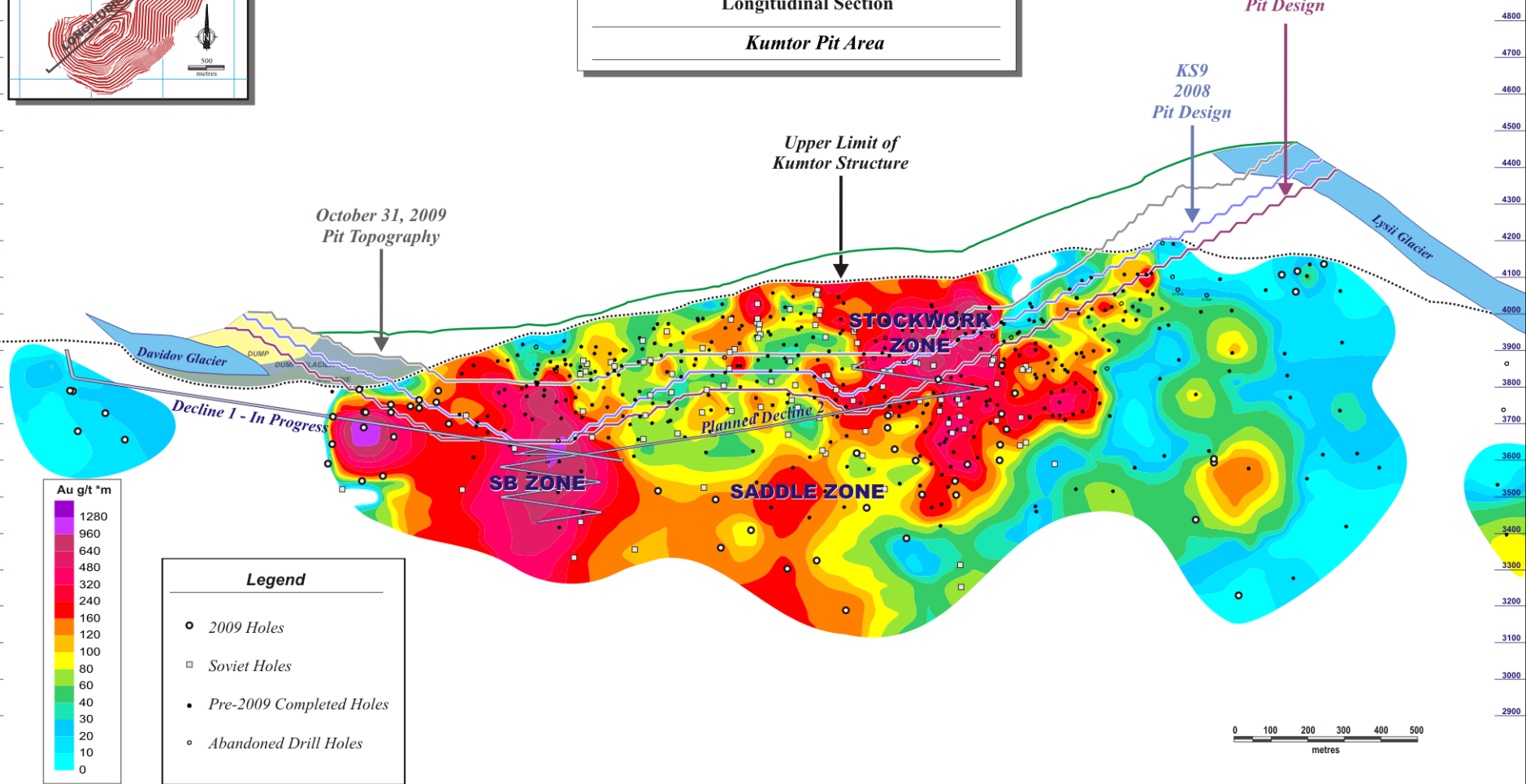
KUMTOR EXPLORATION

October 31, 2009

GOLD GRADE * THICKNESS
Longitudinal Section

Kumtor Pit Area

NE



- Legend**
- 2009 Holes
 - Soviet Holes
 - Pre-2009 Completed Holes
 - Abandoned Drill Holes

