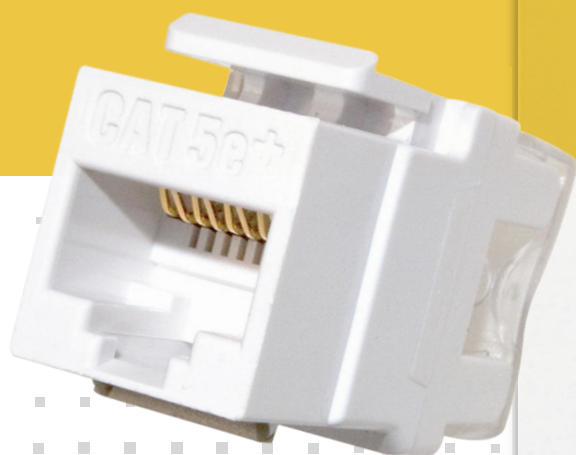


# WALL PLATES, INSERTS & ENCLOSURES GUIDE



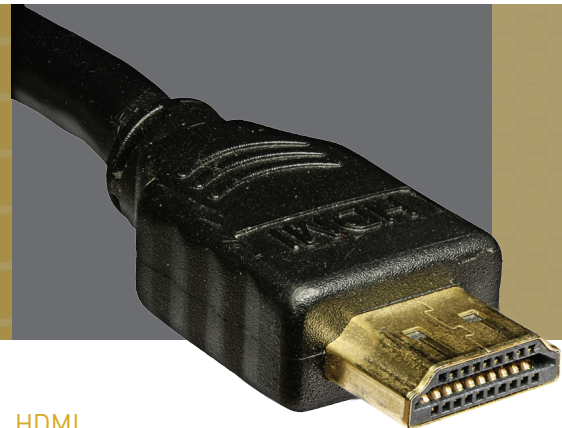
designed to be better.™



# SUPERIOR INFRASTRUCTURE SOLUTIONS



CONNECTIVITY



As the industry leader in structured wiring, On-Q® provides the proven, practical solutions preferred by installers and major home builders across the country. Our comprehensive product offering — which includes wall plates, jacks, straps, tools, modules and enclosures — simplifies installations and reduces time on site. We specialize in meeting the right specifications for any project — residential or light commercial — with solutions that exceed your needs. From single-family homes to apartments, townhomes to condominiums, On-Q has the professional answer for any project.

## HDMI

This full line of CL-3 in-wall UL-rated HDMI High-Speed with Ethernet products — which includes cables, couplers, repeaters and extenders — deliver an unparalleled HD audio and video experience.





### WALLPLATES & INSERTS

Our line of Keystone wall plates and Cat 5e, Cat6, Cat6a, F-Connectors, speaker binding posts and RCA inserts provide flexible setup options at any location.

### DECORATOR STRAPS

We offer a series of pre-configured outlet straps for data, phone, video and home theater applications. Add a home theater strap to enable HD audio and video with a few simple connections, or quickly wire a home office using our pre-configured outlet straps that combine phone, data and video into a single decorator opening.

### ENCLOSURES

Our durable enclosures range in size from 12 to 42 inches to suit any installation. Every enclosure is made in the USA and is compatible with all major module mounting schemes. They offer three 2.5" top openings for high capacity projects, side lances and side tabs for more flexible installation options. Available with hinged or screw-on doors, a Legrand enclosure is the easy choice for professional projects.



# WALL PLATES

## KEYSTONE WALL PLATES



WP3401-WH\*



WP3402-WH\*



WP3403-WH



WP3404-WH



WP3406-WH



WP3212-WH



WP1194-WH

\*Available in packs of 25

PART NO.	DESCRIPTION
WP3401-XX (KTPD1xx)	1-Gang, 1-Port Wall Plate 25 Count Bulk Pack in WH (W) or LA (WP3401-XX-25)
WP3402-XX (KTPD2xx)	1-Gang, 2-Port Wall Plate 25 Count Bulk Pack in WH (W) or LA (WP3402-XX-25)
WP3403-XX (KTPD3xx)	1-Gang, 3-Port Wall Plate
WP3404-XX (KTPD4xx)	1-Gang, 4-Port Wall Plate
WP3406-XX (KTPD6xx)	1-Gang, 6-Port Wall Plate
WP3212-XX	2-Gang, 12-Port Wall Plate Colors: IV, LA and WH
WP1194-XX	1-Gang, Blank Wall Plate

COLORS: BK, BR, IV (I), LA, WH (W)  
DIMENSIONS: 1-GANG: 2.9375" x 4.6875" 2-GANG: 4.75" x 4.6875"

## KEYSTONE LABELED Wall Plates

PART NO.	DESCRIPTION
KTPDL1xx	1-Port Keystone Labeled Wall Plate
KTPDL2xx	2-Port Keystone Labeled Wall Plate
KTPDL3xx	3-Port Keystone Labeled Wall Plate
KTPDL4xx	4-Port Keystone Labeled Wall Plate
KTPDL6xx	6-Port Keystone Labeled Wall Plate

COLORS: I, LA, W DIMENSIONS: 1-GANG: 2.9375" x 4.6875" 2-GANG: 4.75" x 4.6875"

## OVERSIZED WALL PLATES



WP3301-WH



WP3302-WH



WP3303-WH



WP3304-WH



WP3306-WH



WP3300-WH

PART NO.	DESCRIPTION
WP3301-XX	1-Gang, 1-Port Oversized Wall Plate
WP3302-XX	1-Gang, 2-Port Oversized Wall Plate
WP3303-XX	1-Gang, 3-Port Oversized Wall Plate
WP3304-XX	1-Gang, 4-Port Oversized Wall Plate
WP3306-XX	1-Gang, 6-Port Oversized Wall Plate
WP3300-XX	1-Gang, Blank Oversized Wall Plate

COLORS: WH, LA  
DIMENSIONS: 1-GANG: 3.3125" x 5.0625" 2-GANG: 5.125" x 5.0625"  
3-GANG: 6.9375" x 5.0625" 4-GANG: 8.75" x 5.0625"

### COLOR OPTIONS



# WALL PLATES & LOW VOLTAGE BRACKETS

## DECORATOR WALL PLATES



TP13W



TP26W



TP262W



TP263W



TP264W

PART NO.	DESCRIPTION
TP13xx <sup>†</sup> (WP1194-XX)	1-Gang Blank Wall Plate
TP26xx <sup>†</sup> (WP1205-XX)	1-Gang Decorator Wall Plate
TP262xx <sup>†</sup> (WP1207-XX)	2-Gang Decorator Wall Plate
TP263xx <sup>†</sup> (WP1208-XX)	3-Gang Decorator Wall Plate
TP264xx <sup>†</sup>	4-Gang Decorator Wall Plate

COLORS:

BK, BR, IV (I), LA, WH (W)

DIMENSIONS:

1-GANG: 2.9375" x 4.6875"

2-GANG: 4.75" x 4.6875"

## JUMBO DECORATOR Wall Plates

PART NO.	DESCRIPTION
TPJ13xx	Jumbo 1-Gang Blank Wall Plate
TPJ26xx	Jumbo 1-Gang Wall Plate
TPJ262xx	Jumbo 2-Gang Wall Plate
TPJ263xx	Jumbo 3-Gang Wall Plate

COLORS:

BK, I, LA, W

DIMENSIONS:

1-GANG: 3.3125" X 5.0625", 2-GANG: 5.125" X 5.0625", 3-GANG: 6.9375" X 5.0625"

## LOW VOLTAGE BRACKETS



AC1009-01



AC1009-02



AC1009-11



AC1010-01



AC1010-02



AC1010-03

PART NO.	DESCRIPTION
AC1009-01	1-Gang, LV Bracket w/Nail, New Construction
AC1009-02	2-Gang, LV Bracket, Face Mount, New
AC1009-11	1-Gang, LV Bracket, Face Mount, New
AC1010-01	1-Gang, LV Bracket, Retrofit
AC1010-02	2-Gang, LV Bracket, Retrofit
AC1010-03	3-Gang, LV Bracket, Retrofit

CRAFTED WITH DURABLE HEAVY-DUTY PLASTIC, ON-Q LV BRACKETS FEATURE AN OPEN BACK AND AN INTEGRATED CABLE MANAGEMENT SYSTEM FOR CLEAN CONNECTIONS AND EASY INSTALLATION

### COLOR OPTIONS



BK

BR

IV (I)

LA

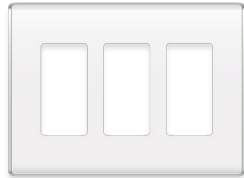
WH (W)

# STUDIO WALL PLATES

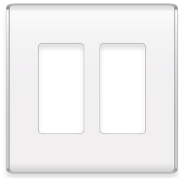
## STUDIO WALL PLATES One, Two, Three & Four-Gang



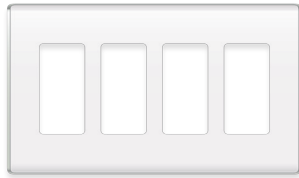
WP5001-XX



WP5003-XX



WP5002-XX



WP5004-XX

PART NO.	DESCRIPTION
WP5001-XX	1-Gang Studio Wall Plate
WP5002-XX	2-Gang Studio Wall Plate
WP5003-XX	3-Gang Studio Wall Plate
WP5004-XX	4-Gang Studio Wall Plate
<p>... SCREWLESS STUDIO WALL PLATES ARE COMPATIBLE WITH ANY DECORATOR-STYLE STRAP, OUTLET OR SWITCH</p>	



## COLOR OPTIONS



Gloss Black (GB)



Cement (CM)



Titanium (TI)



Khaki (KK)



Light Almond (LA)



White (WH)



Bordeaux (BD)



Cameo Pink (CP)



Spanish Red (SP)



Sand (SD)



Citrus (CR)



Taupe (TP)



Aloe (AE)



Moss (MS)



Cozumel (CZ)



Cyan (CY)



Nirvana (NV)

# PRE-CONFIGURED DECORATOR STRAPS

## DECORATOR STRAPS



WP3411-WH



WP3412-WH



WP3413-WH



WP3414-WH



WP3416-WH



WP3410-WH

PART NO.	DESCRIPTION
WP3411-XX	1-Port Decorator Outlet Strap
WP3412-XX [KS226xx] <sup>†</sup>	2-Port Decorator Outlet Strap
WP3413-XX [KS326xx] <sup>†</sup>	3-Port Decorator Outlet Strap
WP3414-XX [KS426xx] <sup>†</sup>	4-Port Decorator Outlet Strap
WP3416-XX	6-Port Decorator Outlet Strap
WP3410-XX	Blank Decorator Outlet Strap

COLORS: BK, BR, IV (I), LA, WH (W)

## PRE-CONFIGURED Wall Plates



WP3210-WH



WP3211-WH



WP3220-WH



WP3422-WH



WP1000-WH



CO1000-WH

PART NO.	DESCRIPTION
WP3210-XX	1-Port Strap, 1RJ45 Colors: BK, LA, WH
WP3211-XX	2-Port Strap Phone/TV Colors: BK, LA, WH
WP3220-XX	2-Port Strap Phone/Data Colors: BK, LA, WH
WP3422-XX	4-Port Strap Phone/Data, TV/AUX <b>WITH THIS PRE-CONFIGURED 4-PORT STRAP YOU CAN OFFER PHONE, DATA, TV AND AN AUXILIARY LINE IN ONE DECORATOR OPENING. PERFECT FOR HOME OFFICES, MDU AND ENTERTAINMENT CENTERS. PRE-LABELED FOR EASY ORGANIZATION.</b> Colors: BK, LA, WH
WP1000-WH	PDP Phone/Data/Power Standard Strap (3 P w/Data) Colors: IV, LA, WH
CO1000-WH	Phone/Data Module

### COLOR OPTIONS



<sup>†</sup>Number in parentheses indicates former part no. and color code  
<sup>†</sup>Omit color code to order brown device

# KEYSTONE INSERTS

## TELEPHONE AND DATA Keystone Inserts



WP3475-WH\*



WP3476-WH



WP346A-WH



WP3450-WH\*



WP3460-WH



WP3458-WH



WP3451-WH



WP3425-WH



WP3550-WH



WP3560-WH

\* Available in white, light almond, and blue in packs of 50

PART NO.	DESCRIPTION
WP3475-XX	Cat 5e Quick Connect RJ45 Keystone Connector Colors: BE, BK, BR, GY, GN, IV, LA, OR, RE, WH, YE
	<b>... CAN BE USED WITH THE LABOR SAVING PUNCH &amp; GO TOOL.</b>
WP3476-XX	Cat 6 Quick Connect RJ45 Keystone Connector Colors: BE, BK, BR, GY, IV, LA, OR, RE, WH
WP346A-XX	Cat 6a Quick Connect RJ45 Keystone Insert Colors: BE, BK, BR, GY, GN, IV, LA, OR, RE, WH, YE
WP3450-XX (KS58ABxx) <sup>†</sup>	Cat 5e RJ45 Keystone Connector Colors: BE (BL), BK, BR, GY (GRY), IV (I), LA, OR, RE (RED), WH (WH)
WP3460-XX (KS68ABxx) <sup>†</sup>	Cat 6 RJ45 Keystone Connector Colors: BE (BL), BK, BR, GY (GRY), IV (I), LA, OR, RE (RED), WH (WH)
WP3458-XX	Cat 5e Keyed RJ45 Keystone Connector Colors: BK, BR, IV, LA, WH
WP3451-XX (KS888xx)	Cat 5e RJ45 Keystone Coupler Colors: BK, WH (W)
WP3425-XX (KS6Uxx) <sup>†</sup>	RJ25 6P6C Keystone Connector Colors: BK, BR, IV (I), LA, WH (W)
WP3550-XX	Snap & Go Cat 5e Keystone Connector Colors: BE, BK, BR, GY, IV, LA, OR, RE, WH
WP3560-XX	Snap & Go Cat 6 Keystone Connector Colors: BE, BK, BR, GY, IV, LA, OR, RE, WH

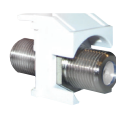
## VIDEO INSERTS



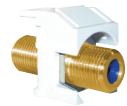
WP3479-WH\*



WP3480-WH



WP3481-WH\*



WP3482-WH



WP1234-WH



WP3455-WH



KSBNCW



KSSVW

\*Available in packs of 50.

PART NO.	DESCRIPTION
WP3479-XX	Non-Recessed Coax Keystone F-Connector (1 GHz) 50 Count Bulk Pack in WH or LA (WP3479-XX-50)
WP3480-XX	Recessed Gold F-Connector (3GHz)
WP3481-XX (KSFFxx)	Recessed Nickle F-Connector (3GHz) 50 Count Bulk Pack in WH (WP3481-WH-50)
WP3482-XX (KSFFSTxx)	Recessed Self-Terminating Keystone F-Connector (1 GHz)
WP1234-XX	HDMI Keystone Insert/Coupler
WP3455-XX (KSBL10xx) <sup>†</sup>	Blank Keystone Insert Colors: BK, BR, IV (I), LA, WH (W)
KSBNCxx	Keystone BNC-to-BNC Connector
KSSVxx	Keystone S-Video-to-110 Termination Colors: I, LA, W

## COLOR OPTIONS



# KEYSTONE INSERTS

## RCA-TO-F INSERTS



WP3461-WH



WP3462-WH



WP3463-WH



WP3464-WH



WP3465-WH



WP3466-WH

PART NO.	DESCRIPTION
WP3461-XX	White Keystone RCA-to-F Connector
WP3462-XX [KSRCFxx] <sup>†</sup>	Red Keystone RCA-to-F Connector
WP3463-XX	Green Keystone RCA-to-F Connector
WP3464-XX	Blue Keystone RCA-to-F Connector
WP3465-XX	Yellow Keystone RCA-to-F Connector
WP3466-XX	Purple Keystone RCA-to-F Connector
COLORS:	BK, BR, IV (I), LA, WH (W)

## FIBER OPTIC INSERTS



KSSCW



KSSTW

PART NO.	DESCRIPTION
KSSCxx	Keystone SC Multimode, Phosphor Bronze Sleeve
KSSTxx	Keystone ST Multimode, Phosphor Bronze Sleeve
COLORS:	I, LA, W

## MULTIMEDIA INSERTS



KSRCAYW



KSRCARW



KSRCABW



WP3457-WH



WP3456-WH

PART NO.	DESCRIPTION
KSRCAYxx	Keystone RCA-to-RCA (Yellow Insulator) Colors: I, LA, W
KSRCARxx	Keystone RCA-to-RCA (Red Insulator) Colors: I, LA, W
KSRCABxx	Keystone RCA-to-RCA (Black Insulator) Colors: I, LA, W
WP3457-XX [KS2BPxx] <sup>†</sup>	Audio Keystone Binding Post - Pair Colors: BK, BR, IV (I), LA, WH (W)
WP3456-XX	Speaker Pair Insert Colors: BK, BR, IV, LA, WH

### COLOR OPTIONS



BK BR IV (I) LA WH (W)

<sup>†</sup>Number in parentheses indicates former part no. and color code  
<sup>††</sup>Omit color code to order brown device

# COMMUNICATION DEVICES

## PRE-MOLDED WALLPLATES



TPTE1W



TPTE2W



26TE14W



26TE16W



WMTE14W



SMTE14I



TPCATVW



TPCATV2W



26CATVW



TPTELTW



26TELTW



WP3409-WH



WP3501-WH



WP3502-WH



WP3467-WH



WP2001-WH-10



WP2002-WH

PART NO.	DESCRIPTION
TPTE1xx <sup>†</sup>	2-Line Telephone Jack Wall Plate (4 Conductor Configuration) Colors: BK, BR, I, LA, W, GRY
TPTE2xx <sup>†</sup>	Dual 2-Line Telephone Jack Wall Plate (4 Conductor Configuration) Colors: BK, BR, I, LA, W
26TE14xx	Decorator 2-Line Telephone Jack (4 Conductor Configuration) Colors: I, LA, W
26TE16xx	Decorator 3-Line Telephone Jack (6 Conductor Configuration) Colors: I, W
WMTE14xx	2-Line Wall Mount Telephone Jack for Hanging Phones (4 Conductor Configuration) Colors: I, LA, W
SMTE14I	Surface Mount Modular 2-Line Telephone Jack (4 Conductor Configuration) Colors: I
TPCATVxx <sup>†</sup>	1 GHz Coaxial Connector & Wall Plate Colors: I, LA, W, BR, BK
TPCATV2xx <sup>†</sup>	Dual 1GHz Coaxial Connector Wall Plate Colors: I, LA, W, BR, BK
26CATVxx	Decorator 1 GHz Coaxial Connector Colors: I, LA, W
TPTELTVxx <sup>†</sup>	1 GHz Coaxial Connector & 2-Line Phone Jack Wall Plate Colors: I, LA, W, BR, BK
26TELTVxx	1 GHz Coaxial Connector & 2-Line Phone Jack with One-Piece Molded Decorator Plate Colors: I, LA, W
WP3409-WH	Single Gang Surface Mount Box Colors: WH
WP3501-WH	Surface Mount Box 1-Port Colors: WH
WP3502-WH	Surface Mount Box 2-Port Colors: WH
WP3467-XX	Keystone Wall Phone Plate Colors: WH, SS (Stainless Steel)
WP2001-WH-10	Pre-Configured 1-Gang Gold F-Connector (10 Pack in WH)
WP2002-WH	1-Gang 6P6C RJ25 Terminating Wall Phone Plate Colors: WH

CONNECTIVITY

### COLOR OPTIONS



# HOME THEATER

## HOME THEATER Straps and Wallplates



F9004-WH



F9005-WH



F9006-WH



F9008-WH-V1



WP9009-WH-V1



WP1010-WH



WP1014-WH



WP9001-WH



WP9002-WH

PART NO.	DESCRIPTION
F9004-XX	5.1 Home Theater Strap <b>TOP SELLER!</b> Colors: BK, BR, IV, LA, WH
F9005-XX	2 Speaker Connection Strap Colors: BK, BR, IV, LA, WH
F9006-XX	Single Speaker Connection Strap Colors: BK, BR, IV, LA, WH
F9008-XX-V1	5.1 Home Theater Strap with Wall Plate Colors: DM, LA, WH
WP9009-XX-V1	7.1 Home Theater Strap with Wall Plate Colors: BK, BR, IV, LA, WH
WP1010-XX	Component Video/Digital Audio Balun Colors: BK, LA, WH <b>CONVERTS 5.1 DIGITAL AUDIO AND COMPOSITE VIDEO TO CAT 5/CAT 6 CABLE (TWO STRAPS REQUIRED FOR INSTALLATION)</b>
WP1014-WH	Cable Access Strap <b>TOP SELLER!</b>
WP9001-XX	Single Gang Bullnose Wall Plate Colors: BK, WH
WP9002-XX	Double Gang Bullnose Wall Plate Colors: BK, WH

**THE BULLNOSE WALL PLATE** is a unique cable management solution. Its hinged design provides four distinct configurations for flexible routing of low voltage cables inside the wall—just turn and snap the scoop for your preferred setup. (Patent Pending)



# HDMI

## HDMI Cables

NEW!



AC2M00-BK



AC2M01-BK



AC2M02-BK



AC2M03-BK



AC2M04-BK



AC2M05-BK



AC2M07-BK



AC2M10-BK



AC2M15-BK



AC2M20-BK

PART NO.	DESCRIPTION
AC2M00-BK	0.7 Meter HDMI Cable w/Ethernet
AC2M01-BK	1 Meter HDMI Cable w/Ethernet
AC2M02-BK	2 Meter HDMI Cable w/Ethernet
AC2M03-BK	3 Meter HDMI Cable w/Ethernet
AC2M04-BK	4 Meter HDMI Cable w/Ethernet
AC2M05-BK	5 Meter HDMI Cable w/Ethernet
AC2M07-BK	7.5 Meter HDMI Cable w/Ethernet
AC2M10-BK	10 Meter HDMI Cable w/Ethernet
AC2M15-BK	15 Meter HDMI Cable w/Ethernet
AC2M20-BK	20 Meter HDMI Cable w/Ethernet

THESE CL3 IN-WALL RATED HIGH-SPEED WITH ETHERNET HDMI CABLES DELIVER UNCOMPRESSED HIGH DEFINITION AUDIO, VIDEO AND ETHERNET CONNECTIVITY
 

- SUPPORTS ETHERNET, 3D, 4K (ULTRA HD), DOLBY TRUEHD, DTS-HD MASTER AUDIO
- GOLD-PLATED CONNECTORS WITH INDIVIDUALLY SHIELDED CONDUCTORS ENSURE MAXIMUM RESOLUTION
- AUDIO RETURN CHANNEL (ARC) AND HDMI ETHERNET CHANNEL (HEC) CAPABLE
- CL3-RATED AND UL-APPROVED FOR IN-WALL USE

## HOME THEATER Connection Kits



HT2102-WH-V1



HT2103-WH-V1



HT2000-WH-V1



HT2001-WH-V1

PART NO.	DESCRIPTION
HT2102-WH-V1	Flat Panel TV Connection Kit
HT2103-WH-V1	Home Theater Connection Kit
HT2000-WH-V1	HDMI In-Wall Connection Kit Contents: <ul style="list-style-type: none"> <li>• 1 9-Foot High Speed HDMI Cable w/Ethernet</li> <li>• 2 Cable Access Straps with Wall Plates</li> </ul>
HT2001-WH-V1	HDMI Premium In-Wall Connection Kit Contents: <ul style="list-style-type: none"> <li>• 1 9-Foot High Speed HDMI Cable w/Ethernet</li> <li>• 1 Cable Access Strap w/Wall Plate</li> <li>• 1 3-Port HDMI Strap w/ Wall Plate</li> </ul> <p>  THIS PRO-GRADE KIT PROVIDES CLEAN CABLE MANAGEMENT AND UNPARALLELED AUDIO/VIDEO TO DELIVER A SUPERIOR HOME ENTERTAINMENT EXPERIENCE.                 </p>

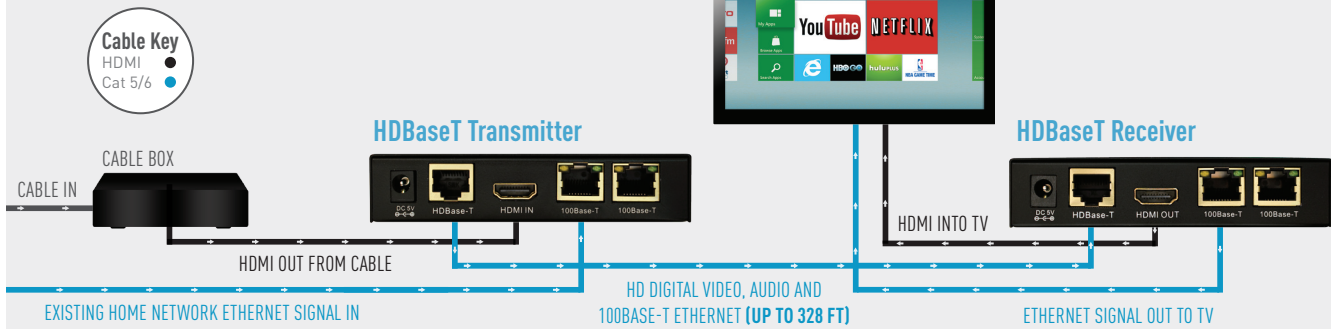
# HDMI

## HDBaseT HDMI Extender

**NEW!**


PART NO.	DESCRIPTION
AC1030	HDBaseT HDMI Extender
	<ul style="list-style-type: none"> <li>THE AC1030 KIT EXTENDS HDMI AND INTERNET SIGNALS UP TO 328 FEET USING CAT 5 OR CAT 6 WIRING. IT SUPPORTS 3D VIDEO AND 1080P RESOLUTION, WHILE DUAL IR TARGETS ALLOW THE SOURCE DEVICE TO RECOGNIZE REMOTE COMMANDS AT A SECONDARY LOCATION.</li> </ul>

### WIRING DIAGRAM



## HDMI Accessories

**NEW!**


WP1011-WH



AC2100



AC2101

PART NO.	DESCRIPTION
WP1011-XX	HDMI 3-Port Strap Colors: BK, LA, WH
AC2100	HDMI Repeater <ul style="list-style-type: none"> <li>CONNECTS TWO HDMI HIGH-SPEED WITH ETHERNET CABLES &amp; EXTENDS ETHERNET SIGNAL UP TO 20 FEET</li> </ul>
AC2101	HDMI Hinged Coupler <ul style="list-style-type: none"> <li>REDUCES CABLE BENDING FOR SUPERIOR ORGANIZATION</li> </ul>



# HDMI

## High Speed HDMI with Ethernet CL3 Cables | Features Guide

Part No.	Length	High Speed w/ Ethernet	1080p (120hz) Max Refresh Rate at 10.2 Gps	4K (Ultra HD)	Dolby TrueHD Audio	3D Support	DTS-HD Master Audio	32 Bit Deep Color	Fire Rated UL/CL3	HDMI Ethernet Channel	Auto Return Channel (ARC)	Gold plated Individually Sealed Conductors
AC2M00-BK	0.7m (2.3')	✓	✓	✓	✓	✓	✓	✓	✓	✓	✓	✓
AC2M01-BK	1m (3.3')	✓	✓	✓	✓	✓	✓	✓	✓	✓	✓	✓
AC2M02-BK	2m (6.6')	✓	✓	✓	✓	✓	✓	✓	✓	✓	✓	✓
AC2M03-BK	3m (9.8')	✓	✓	✓	✓	✓	✓	✓	✓	✓	✓	✓
AC2M04-BK	4m (13.1')	✓	✓	✓	✓	✓	✓	✓	✓	✓	✓	✓
AC2M05-BK	5m (16.4')	✓	✓	✓	✓	✓	✓	✓	✓	✓	✓	✓
AC2M07-BK	7.5m (24.6')	✓	✓	✓	✓	✓	✓	✓	✓	✓	✓	✓
AC2M10-BK	10m (32.8')	✓	✓	✓	✓	✓	✓	✓	✓	✓	✓	✓
AC2M15-BK	15m (49.2')	✓	✓	✓	✓	✓	✓	✓	✓	✓	✓	✓
AC2M20-BK	20m (65.6')	✓	✓	✓	✓	✓	✓	✓	✓	✓	✓	✓



The professional choice for HDMI cables and accessories

This comprehensive line of pro-grade HDMI products — which includes CL3-rated High-Speed cables, couplers, repeaters and extenders — delivers an unparalleled HD audio and video experience.

- Provides uncompressed HD video and 8-channel digital audio in a single cable
- Supports 3D, 1080p, 4K (Ultra HD) & 32 Bit Deep Color video
- Supports Dolby TrueHD and DTS-HD Master Audio
- Audio Return Channel (ARC) and HDMI Ethernet Channel (HEC) capable
- All cable lengths CL3-rated for in-wall use
- Compatible with HDTVs, DVD/Blu-ray players, cable & satellite set top boxes, and gaming consoles
- Gold-plated connectors with individually shielded conductors ensure maximum resolution



# CABLES

## CAT 5e PATCH CABLES



AC35XX-WH-V1



PART NO.	DESCRIPTION
363201-25-V1	1 Foot Cat5e Patch Cable (red)
363201-26-V1	2 Foot Cat5e Patch Cable (red)
AC3503-WH-V1	3 Foot Cat5e Patch Cable
AC3507-WH-V1	7 Foot Cat 5e Patch Cable
AC3514-WH-V1	14 Foot Cat 5e Patch Cable
AC3525-WH-V1	25 Foot Cat 5e Patch Cable
AC3550-WH-V1	50 Foot Cat 5e Patch Cable

- 100MHZ PATCH CABLE SUPPORTS 10 GIGABIT ETHERNET SPEEDS
- UL VERIFIED TO SUPPORT THE CAT 5e PERFORMANCE PATCH CABLE SPECIFICATION
- SNAGLESS OVERMOLD PREVENTS INSERTION TAB FROM CATCHING ON OTHER CABLES
- 24 AWG STRANDED PATCH CABLE

## CAT 6 PATCH CABLES



AC36XX-BE-V1



PART NO.	DESCRIPTION	NEW!
AC3607-BE-V1	7 Foot Cat 6 Patch Cable	
AC3614-BE-V1	14 Foot Cat 6 Patch Cable	
AC3625-BE-V1	25 Foot Cat 6 Patch Cable	
AC3650-BE-V1	50 Foot Cat 6 Patch Cable	

- 250MHZ PATCH CABLE FULLY SUPPORTS 10 GIGABIT ETHERNET SPEEDS
- UL VERIFIED TO SUPPORT THE CAT 6 PERFORMANCE PATCH CABLE SPECIFICATION
- SNAGLESS OVERMOLD PREVENTS INSERTION TAB FROM CATCHING ON OTHER CABLES
- 22 AWG STRANDED PATCH CABLE

## CAT 6a PATCH CABLES



AC6AXX-GY-V1



PART NO.	DESCRIPTION	NEW!
AC6A07-GY-V1	7 Foot Cat 6a Patch Cable	
AC6A14-GY-V1	14 Foot Cat 6a Patch Cable	
AC6A25-GY-V1	25 Foot Cat 6a Patch Cable	
AC6A50-GY-V1	50 Foot Cat 6a Patch Cable	

- 500MHZ PATCH CABLE FULLY SUPPORTS 10 GIGABIT ETHERNET SPEEDS
- UL VERIFIED TO SUPPORT THE CAT 6a PERFORMANCE PATCH CABLE SPECIFICATION
- SNAGLESS OVERMOLD PREVENTS INSERTION TAB FROM CATCHING ON OTHER CABLES
- 22 AWG STRANDED PATCH CABLE



# PATCH PANELS

## CAT 5e & CAT 6 Rack Mount Patch Panels



24845C5E



48845CC6

PART NO.	DESCRIPTION
24845C5E	Category 5e 24-Port T568A/B Universal Wiring
48845C5E	Category 5e 48-Port T568A/B Universal Wiring
24845CC6	Category 6 24-Port T568A/B Universal Wiring
48845CC6	Category 6 48-Port T568A/B Universal Wiring

- 24 PORT PATCH PANEL USES 1 RACK MOUNT SPACE
- 48 PORT PATCH PANEL USES 2 RACK MOUNT SPACES
- 110 PUNCHDOWN REAR TERMINATION

## CAT 5e FRONT TERMINATE Wall-Mount Jack Panels with Stand-Off Legs



JP12845C5E



JP24845C5E



JP36845C5E

PART NO.	DESCRIPTION
JP12845C5E	12-Port T568A Wiring
JP24845C5E	24-Port T568A Wiring
JP36845C5E	36-Port T568A Wiring

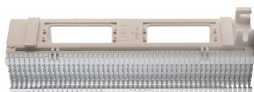
## CAT 5e Wall-Mount Patch Panel with 89D Bracket



12845C5E89

PART NO.	DESCRIPTION
12845C5E89	12-Port T568A/B Universal Wiring

## 66 BLOCK & BRACKET



PS665089V

PART NO.	DESCRIPTION
PS665089V	50-Pair 66 Block, Unwired & Mounting Bracket
PS11050KIT4V	50-Pair 110 Kit with Legs

# ACCESSORIES & TOOLS

## ACCESSORIES



364554-01



AC2006



AC3460-V0



WP3483-01



364405-01



364774-01



364597-01



364246-01

PART NO.	DESCRIPTION
364554-01	EZ-RJ45 Modular Cat 5e Plug <b>LABOR SAVER!</b> PATENTED DESIGN PROVIDES A QUICK AND HASSLE-FREE CONNECTION FOR CAT 5E CABLE. ALLOWS EASY INSPECTION OF WIRE ORDER BEFORE TERMINATION. DESIGNED FOR USE WITH THE EZ-RJ45 MODULAR PLUG HAND TOOL (364555-01).
AC2006	EZ-RJ45 Modular Cat 6 Plug <b>LABOR SAVER!</b> THE CAT 6 EZ-RJ45 CONNECTOR MAKES IT EASY TO QUICKLY AND EFFICIENTLY TERMINATE WIRES OF ANY LENGTH. LARGE CABLE OPENINGS REDUCE THE DISTANCE BETWEEN THE WIRES AND CONTACTS, CREATING OPTIMAL PERFORMANCE AND RELIABLE CONNECTIONS EVERY TIME.
AC3460-V0	High Performance Cat 6 RJ45 Modular Plug 10 pack
WP3483-01	Banana Plugs
364405-01	High Performance RJ45 Modular Plugs 25 pack
364774-01	F-to-Twin-Lead Adapter USED TO QUICKLY CONNECT IYRIQ VOLUME CONTROLS TO SUBWOOFER VIA COAX
364597-01	Mini Coax Jumper Assembly, 12"
364246-01	360 Conical Coax F Plug

## TOOLS



362721-02



364555-01



363292-01



AC3400



AC3401



AC1018



363293-01



364346-01



364347-01



364406-01



363291-01

PART NO.	DESCRIPTION
362721-02	RG-6 Coax Stripper <b>LABOR SAVER!</b>
364555-01	EZ RJ-45 Modular Plug Hand Tool <b>LABOR SAVER!</b>
363292-01	Cat 5e Strip and Fit Tool <b>LABOR SAVER!</b>
AC3400	Punch & Go Tool <b>LABOR SAVER!</b> IMPROVES TERMINATION SPEEDS, REDUCES COMPROMISED CONNECTIONS AND INCREASES PRODUCTIVITY OF ANY QUICK CONNECT DATA INSERT
AC3401	Punch & Go Tool Replacement Blade
AC1018	Radial Taper Compression Tool (use with 364246-01 Coax F Plug)
363293-01	110 Punch Down Tool, Impact
364346-01	Coax Flaring and Insertion Tool
364347-01	Extended Coax Connector <a href="http://WWW.LEGRAND.US/ONQ">WWW.LEGRAND.US/ONQ</a>
364406-01	High Performance RJ45 Modular Plug Hand Tool
363291-01	Coax Hex Crimp Tool (use with 363140-03 Coax F Plug)

# ENCLOSURES

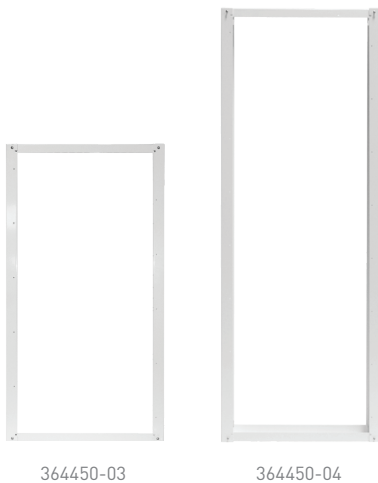
## SCREW-ON COVER Enclosures



PART NO.	DESCRIPTION
EN1200	12" Enclosure with Screw-On Cover 12.13" H x 12" W x 3.7" D
EN1400	14" Enclosure with Screw-On Cover 14" H x 14.25" W x 3.6" D
EN2000	20" Enclosure with Screw-On Cover 20" H x 14.25" W x 3.6" D
EN2800	28" Enclosure with Screw-On Cover 28" H x 14.25" W x 3.6" D
EN4200	42" Enclosure with Screw-On Cover 42" H x 14.25" W x 3.6" D

OUR AMERICAN-MADE ENCLOSURES ARE COMPATIBLE WITH ALL MAJOR MODULE MOUNTING SCHEMES AND OFFER THREE 2.5" OPENINGS FOR HIGH CAPACITY WIRING, SIDE LANCES, A GROUNDING SCREW AND SIDE TABS FOR MORE FLEXIBLE INSTALLATION OPTIONS. UL CERTIFIED FOR FIRE AND BURGLARY.

## ENCLOSURE EXTENDERS



PART NO.	DESCRIPTION
364450-03	28" Enclosure Extender 29.0" L x 15.4" W x 2.5" H
364450-04	42" Enclosure Extender 43.0" L x 15.4" W x 2.5" H

ADDS 2.5 INCHES OF ADDITIONAL DEPTH TO THE ENCLOSURE TO ACCOMMODATE ROUTERS, SWITCHES AND POWER SUPPLIES

# ENCLOSURES

## HINGED DOOR Enclosures



EN1450



EN2050



EN2850



EN4250

PART NO.	DESCRIPTION
EN1450	14" Enclosure with Hinged Cover 14" H x 14.25" W x 3.6" D
EN2050	20" Enclosure with Hinged Cover 20" H x 14.25" W x 3.6" D
EN2850	28" Enclosure with Hinged Cover 28" H x 14.25" W x 3.6" D
EN4250	42" Enclosure with Hinged Cover 42" H x 14.25" W x 3.6" D
◆◆◆ HINGED COVERS KEEP MODULES SECURE AND PROTECT PRODUCTS FROM WEAR AND TEAR. SHIPS STANDARD WITH STURDY FULL LENGTH PIANO HINGES ALONG WITH LOCK CHAMBERS AND KEYS FOR QUICK AND EASY ACCESS.	

## ENCLOSURE INSERTS Clear & Smoke

PART NO.	DESCRIPTION
364482-01	Enclosure Extender Wire Manager
364593-11	28" Brushed Aluminum Frame, Clear Insert
364594-11	42" Brushed Aluminum Frame, Clear Insert
364593-14	28" Brushed Aluminum Frame, Smoke Insert
364594-14	42" Brushed Aluminum Frame, Smoke Insert



# RESOURCES - LINKS & AVAILABLE TOOLS

## TECH SUPPORT

800.321.2343  
tech.support-hs@legrand.us

Our toll-free support line is available from **7:30 a.m. to 6:30 p.m. EST**, Monday through Friday (excluding holidays)

## CUSTOMER SERVICE

800.321.2343  
customer.support-hs@legrand.us

Our toll-free customer service line is available from **8:00 a.m. to 6:30 p.m. EST**, Monday through Friday (excluding holidays)

## TRAINING

legrand.us/education  
Contact: training-hs@legrand.us

**On-Q offers award-winning in-person and online training. Our innovative sales and installation curriculum is designed to exceed the needs of professional installers.**

**Online Training:** Comprehensive online training classes you can take anytime from your home or office.

**Webinars:** These bi-monthly sessions highlight new product offerings, tackle frequently asked questions, and give you a overview of how to efficiently configure and install On-Q solutions.

**Live Product Installation Training:** Our comprehensive courses — taught by certified professional trainers — cover category overviews, installation best practices, troubleshooting tips and much more.

## LITERATURE

### 2012/2013 PRODUCT CATALOG

Part No.1308131  
Showcases the complete On-Q product line along with all the innovative solutions available to homeowners



### HOME SYSTEMS FOLDER

Part No.1308074  
Consumer-friendly brochure with inserts, each one focusing on the benefits of a specific home system such as intercom, audio, camera, networking and more.



©2012 by Legrand. All Rights Reserved. Part# 1308205 8m-LF/TK-12/12

designed to be better™



**Legrand**  
301 Fulling Mill Road, Suite G  
Middletown, PA 17057  
(800) 321-2343  
www.legrand.us/onq

**Legrand, North America**  
60 Woodlawn Street  
West Hartford, CT 06110  
1.877.BY.LEGRAND (295.3472)  
www.legrand.us

570 Applewood Crescent  
Vaughan, Ontario L4K 4B4  
905.738.9195  
www.legrand.ca

Follow Us

