

# Model Moving Pollen



**Pollen** is a light, sticky powder that flowers need to make seeds. Animals such as bees and ladybugs help move pollen as they feed on nectar deep within the flower. Think about how the body parts of animals are shaped to move pollen.

Ask a question about how animals move pollen.

Sample question: How do the parts of animals help move pollen?

## Materials Checklist

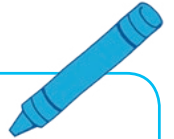
- ☐ 3 colors of chalk powder
- ☐ 3 cotton balls
- ☐ 3 small cups
- ☐ cotton swabs
- ☐ water

### Step 1

Place each powder in a different cup with a cotton ball. Dip a cotton swab in water. Roll it over each cotton ball. Record what you observe.



Children should draw a cotton swab that has picked up all three colors of chalk.



### Step 2

Repeat two more times. Compare your results with a partner.

### Step 3

What parts of an animal can help move pollen from plant to plant?

Sample answer: The hairs on the body, legs, and antennae pick up pollen.

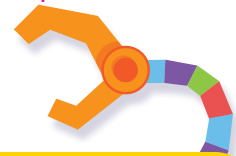
Make a **claim** about how animals move pollen.

Sample answer: Pollen sticks to the hairs of animals when they feed on flowers. As animals move from flower to flower, the pollen is carried along.

What is your **evidence**? Talk with a partner about your **reasoning**.

Sample answer: My evidence is that the wet cotton swab picks up the different colors of chalk. When the cotton swab is placed on the cotton ball, some of the chalk on the cotton swab falls onto the cotton ball. My reasoning is that this makes me think that the fuzzy hairs on an animal's body pick up pollen from one flower and drop it onto other flowers.

## Making Sense



I explored how animals help move pollen.

How does this help me explain how animals help plants?

Sample answer: Animals help plants by moving pollen from one plant to another. Animals that eat from flowers have hairs that pick up pollen. When the animals move to the next plant, some of the pollen drops off.

