



VistaPix™

Binocular & Digital Camera
Model #72200 & #72201

User Guide

Introduction

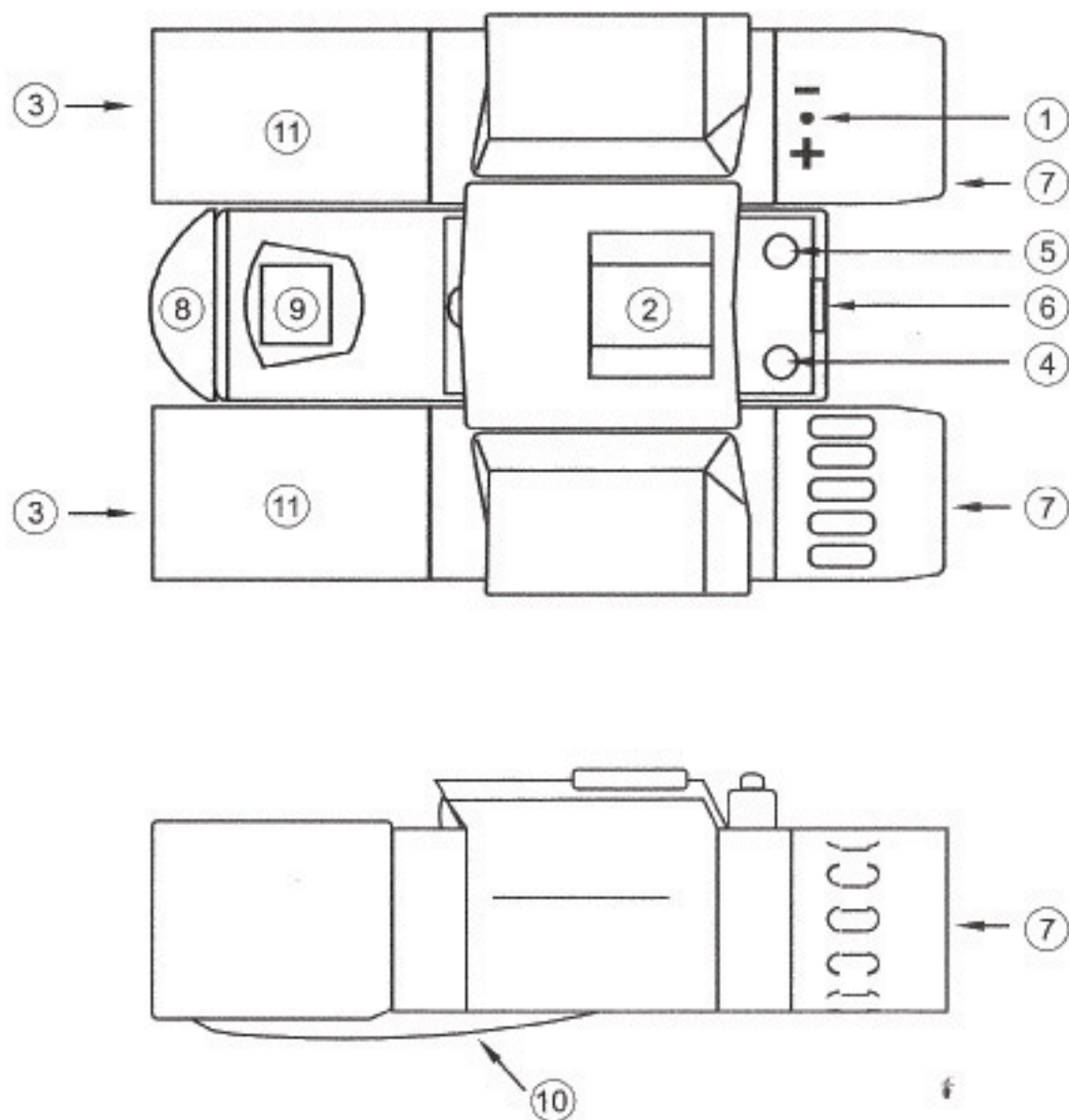
VistaPix is a binocular integrated with a digital camera that is great for spotting events, concerts and wildlife activities such as hunting or bird-watching. VistaPix lets you record memories and sights at the touch of a button. Use the full-featured binocular for closer views and capture images to take home with you at the same time.

VistaPix makes it possible to share your fun with others by downloading images from the camera right to your computer to e-mail to your friends and family.

Main Features:

- * Use as a fully functional binocular.
- * Take up to two minutes of continuous video.
- * Save single image as a JPG file and video captures as AVI file.
- * With included Photo Manager software, you can transfer images or video onto your computer for viewing, editing and printing.
- * Capture images at the same magnification as seen through binocular.
- * An LCD screen that displays the mode and numbers of photographs.
- * Automatic White Balance for color correction in different lighting conditions.
- * Automatic (90 seconds) shut off mode to extend the battery life.

Features



1. Diopter Knob(on underside)

2. Center Focus Knob

3. Objective Lens

4. Mode/ Power Button(M)

5. Shutter/Set Button(S)

6. USB Port

7. Eyepiece

8. Camera Lens

9. LCD Display

10. Battery Compartment Lid

11. Objective Barrel

How To Use Your Binocular

How to use your binocular

WARNING !

Never use a VistaPix to look at the sun !

Looking at or near the Sun may cause instant and irreversible damage to your eye. Eye damage is often painless, so there is no warning to the observer that damage has occurred until it is too late. Do not point the binocular at or near the Sun. Children should always have adult supervision while observing.



Adjustment of eye-relief for eyeglass wearers

Fold down the rubber eyecups and place them against your glasses to get the best viewing result.

Adjusting the eyepieces

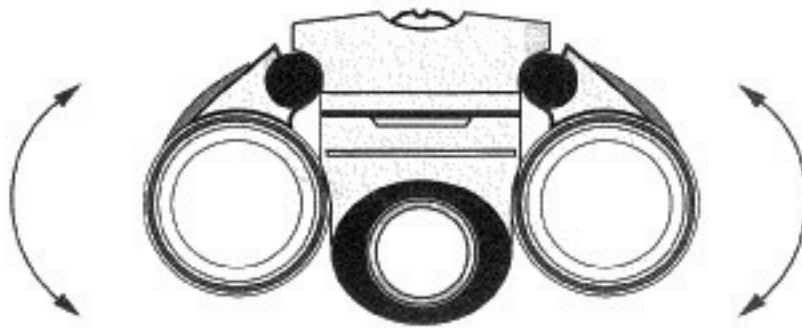
The distance between your eyes is called interpupillary distance. The interpupillary distance is different from one person to another. It is important to adjust to your interpupillary distance before using your VistaPix:

- Hold the VistaPix firmly in the normal viewing position.
- Adjust the barrels by pushing together or pulling apart until you see a single circle field with both of your eyes.

Focusing the Binocular

1. Set the Diopter Knob on underside of VistaPix at its center point between + and - .
2. Choose an object that is at least 10 meters (30 ft) away .
3. Looking with just your left eye, rotate the Center Focus Knob until the object you are viewing is in best focus.
4. Looking with just your right eye, rotate the Diopter Knob until the object you are viewing is in best focus.
5. Viewing your object with both eyes, turn the Center Focus Knob to bring it in best focus.

How To Use Your Camera



Attention!!:

- * To extend battery life, remove the batteries when not using the camera. Failure to do so will result in dead battery after several days. Make sure all images have been downloaded before removing batteries.
- * Note: When batteries are removed, memory of pictures can maintain for 30 seconds. Batteries must be replaced within 30 seconds to avoid losing pictures. Be sure VistaPix is OFF before replacing the batteries.

Inserting Batteries

Lift the battery compartment lid (10) and insert two AAA size alkaline batteries.

Download method Instruction

1. Please use USB Cable to connect with VistaPix.
2. Stored images can be viewed and saved from the "Removable disk" drive from the "My Computer" icon, or downloaded using Photo Manager.

Maintenance

Operating Environment: 41° to 104° F (5° to 40° C). † 20%-85% relative humidity, non-condensing

Care of your VistaPix

1. Never immerse VistaPix into any fluid or liquid. Remove dust or stains with a soft cloth dampened with water or neutral detergent. Keep in a dry and cool dust-free environment or a container when it is not used.
2. Take the batteries out when VistaPix is not to be used over a long period.
3. Avoid dropping the VistaPix. Do not disassemble VistaPix.

Taking Pictures

Press Power/Mode button(4) for 3 seconds to turn on, the **Hr** screen appears for 2 seconds and then appears **00** .

00 **The Initial setting.** (This mode is the default setting. If you don't choose another setting, this default setting is high resolution.)

LCD Display modes and operation instruction

- 00**
1. Photograph taking mode. This shows the number of images taken.
 2. Press the Shutter/Set button(5) to take an image.

- 0F**
1. Power Off Mode.
 2. Press the Shutter/Set (5) button to turn off the VistaPix Manually.

- Ct**
1. Continuous picture taking mode (Vlideo Capture mode).
 2. Press the Mode button (4) to select "Ct" mode.
 3. Press the Shutter/Set Button (5) to activate the operations.
(During the operation, the LCD appears blank. You can take up to 2 minutes of continuous video, depending on the amount of images stored .
 4. Press the Shutter/Set button again to finish the operation.

- St**
1. 10 second delay self-timer.
 2. Press the Mode button (4) to select "St" Mode.
 3. Press the Shutter/Set (5) and image will be taken after 10 seconds.

- CL**
1. Delete the last photograph.
 2. Press the Mode button (4) to select "CL" Mode.
 3. Press the Shutter/Set Button (5). The "CL" screen will blink.
 4. To delete the last image, press the Shutter button again while the display is blinking.
 5. If you don't want to delete the image, press the Mode button to cancel.

- CA**
1. Delete all photographs.
 2. Press the Mode button (4) to select "CA" Mode.
 3. Press the Shutter/Set Button (5). The "CA" screen will blink.
 4. To delete all images, press the Shutter button again while the display is blinking.
 5. If you don't want to delete the images, press the Mode button to cancel.

Taking Pictures

Hr

1. To switch to high resolution mode (640 x 480):
2. Press the Mode button (4) to display the current mode ("Lr").
3. Press the Shutter/Set Button (5). The display will blink "Hr".
4. Press the Shutter/Set Button again to switch to hi res mode.
5. If you don't want to change, press the Mode button to return to the image taking mode.

Lr

1. To switch to low resolution mode (320 x 240):
2. Press the Mode button (4) to display the current mode ("Hr").
3. Press the Shutter/Set Button (5). The display will blink "Lr".
4. Press the Shutter/Set Button again to switch to low res mode.
5. If you don't want to change, press the Mode button to return to the image taking mode.

PC

VistaPix is a Mass Storage Device. This means that while connected to a PC through the USB port, Windows will add a "Removable Disk" hard drive under the "My Computer" icon. Simply access the removable disk to retrieve, view and save images to a permanent location.

When connected to a PC, the LCD screen will display the [PC] screen.

- © When no action is performed on each chosen mode, it will return to the photograph taking mode automatically after 10 seconds.

NOTE:

When the VistaPix memory is full, the LCD displays "Fu". In this case, you need to download pictures or erase pictures before taking any more pictures.

Image Taking System Requirement

1. Window 98/SE/ 2000 Me/ 2000 XP
2. 233MHz(or equivalent) processor or faster.
3. 128 MB SDRAM.
4. Video(VGA) card with 2MB of RAM for minimum 16-bit(High Color) display.
5. CD-ROM
6. USB port
7. 600 MB of free hard disk space.
8. If you have any problem with system specifications, please contact your computer manufacturer.

Installing the Driver Software

Since VistaPix is a Mass Storage Device you can access captured images just as if it were a hard drive, therefore no software driver is needed (See PC Mode above).

If using VistaPix with an older version of Windows (98 or earlier) it may be necessary to install the software driver.

Steps to install VistaPix driver software

1. On the Installation screen, select "Installation Driver"

Step 1 of 3: Select the software you want to install.



Installation Driver

Install Thalia Photo Manager

2. Perform "Installation Wizard" automatically

Step 2 of 3: Select the installation method.



Installation Wizard

Install Thalia Photo Manager

3. After confirming, please press "Next" button

Step 3 of 3: Review the installation options and click Next.



Ins

Ins

4. After confirming, please press "Next" button

Step 4 of 4: Review the installation options and click Next.



Ins

Ins

5. Start installation

Step 5 of 5: Click Next to start the installation.



Ins

Ins

6. Installation finished. Please press "Finish" button

Step 6 of 6: Click Finish to complete the installation.



Ins

Ins

Steps to install Photo Manager

1. Insert the CD
2. Select "Install Photo Manager"

Dr. Samir



- Installation Driver
- Install Thalia Photo Manager**

Dr. Samir

4. Enter installing screen

Dr. Samir



Dr. Samir

6. After confirming, please press "Yes"

Dr. Samir



Dr. Samir

3. Choose the language and press confirm button

Dr. Samir



- Install
- Install Thalia Photo Manager**

Dr. Samir

5. After confirming, please press "Next" button

Dr. Samir



Dr. Samir

7. The serial number is located on the front of the CD. Press "Next" when entered

Dr. Samir



Dr. Samir

Steps to install Photo Manager

8. Choose "Typical" or "Custom" form for installation



9. Confirm the file location



10. Begin installing software



11. Software installation finished, please press "Finish" for confirmation



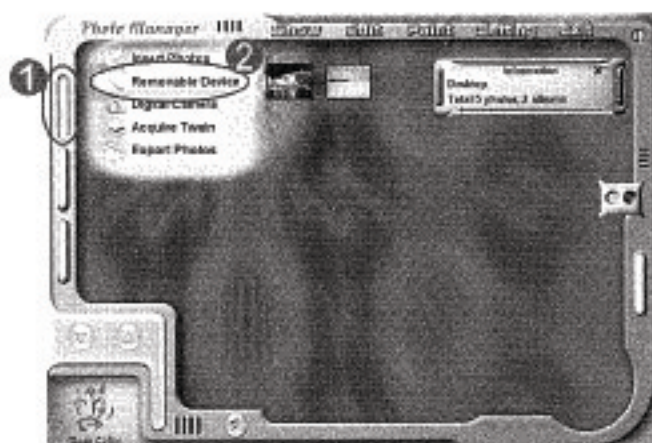
※ After installing VistaPix software. Please restart your computer.

Un-installing the Software

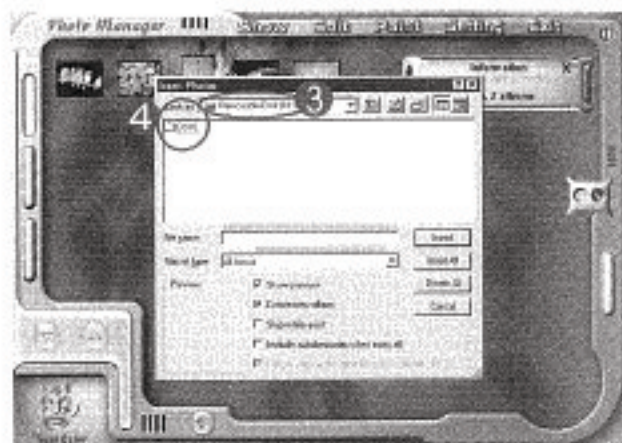
To un-install the software, simply insert the CD and re-install the program. The screen will ask if you would like to remove the program and all of its components.

Downloading Images with Photo Manager

1. Open Photo Manager.
Select "Removable Device" as indicated.



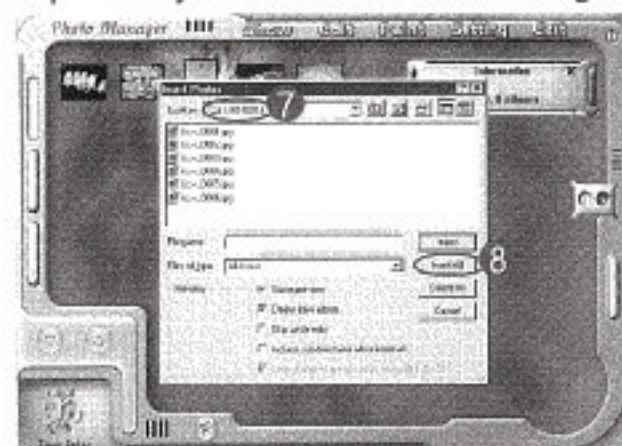
2. Enter "Removable Disk" from the "Look in" box. Double-click on the "Dcim" folder.



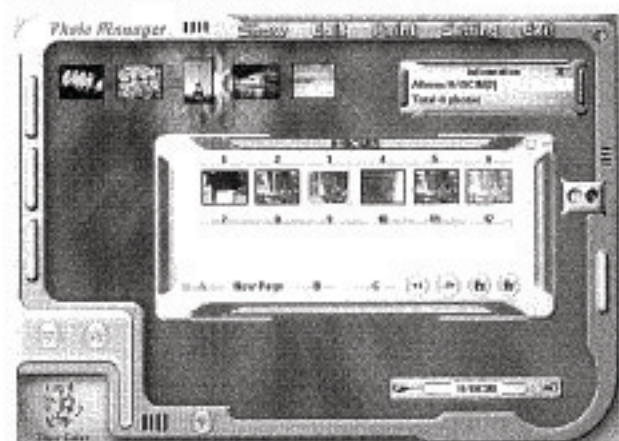
3. Double-click on the "100MEDIA" folder.



4. In "100MEDIA" folder, choose the pictures you want or choose all images.



5. Images download finished.



How to use Photo Manager

Select the buttons as indicated.

"Help" will give you detailed information on Photo Manager's many features.



Description of product specifications

72200

Digital Camera Specifications

Resolution	640X480(Hr) / 320X240(Lr)
Photograph measure	Hr- 160 P / Lr- 580 P
Image sensor	CMOS sensor
Focus range	10m (32.8ft) ~ infinity
Exposure	Auto
White balance	Auto
Memory inside	8MB SDRAM
Battery	AAA alkaline battery x 2

Binocular specifications

Specifications	8 x22 mm
Angular field of view	7.0 ^o Field of view: 112 m (367ft) at 914 m (1000YDS)
Exit pupil	2.6 mm
Eye Relief	10 mm

Coatings	Single layer, fully coated
Close focusing distance	5 m (16.4ft)

Package Contents

USB Cable	x1
Software	x1
User Guide	x1
Binocular Dimensions	112mm x 91.8mm x 50.2mm
Binocular Weight	264.5 g

System Requirements:

- | | |
|---|-----------------------------------|
| 1. Window 98SE/ Me/ 2000/ XP | 5. CD-ROM |
| 2. The processor above Pentium 233MHz | 6. USB port |
| 3. 128MB SDRAM | 7. 600MB of free hard disk space. |
| 4. Video(VGA) card with 2MB of RAM for minimum 16-bit (High Color) display. | |

72201

Digital Camera Specifications

Resolution	640X480(Hr) / 320X240(Lr)
Photograph measure	Hr-160 P / Lr-580 P
Image sensor	CMOS sensor
Focus range	10m (32.8ft) ~ infinity
Exposure	Auto
White balance	Auto
Memory inside	8MB SDRAM
Battery	AAA alkaline battery x 2

Binocular specifications

Specifications	8 x30 mm
Angular field of view	5.8 ^o Field of view: 92.7m (304ft) at 914 m (1000YDS)
Exit pupil	4 mm
Eye Relief	12.5 mm

Coatings	Single layer, fully coated
Close focusing distance	3.5 m (11.48ft)

Package Contents

USB Cable	x1
Software	x1
User Guide	x1
Binocular Dimensions	143mm x 93mm x 49mm
Binocular Weight	349.5 g

System Requirements:

- | | |
|---|-----------------------------------|
| 1. Window 98SE/ Me/ 2000/ XP | 5. CD-ROM |
| 2. The processor above Pentium 233MHz | 6. USB port |
| 3. 128MB SDRAM | 7. 600MB of free hard disk space. |
| 4. Video(VGA) card with 2MB of RAM for minimum 16-bit (High Color) display. | |