

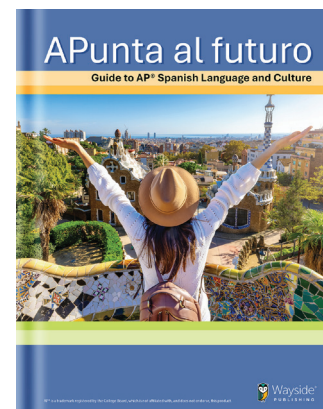
# APunta al futuro®

## Guide to AP® Spanish Language and Culture



### Designed for the Revised AP® Spanish Language and Culture Course and Exam (2027)

APunta al futuro® was intentionally designed from the ground up to align with the revised AP® World Language and Culture Course Framework and Exam, with first implementation beginning in the **2026–2027 school year**. Rather than retrofitting legacy materials, **APunta al futuro** was developed by closely following College Board guidance, ensuring that new instructional themes and contexts, course skills, learning objectives, and assessment formats are fully integrated unit by unit.



### Designed Around the Updated AP® Themes and Instructional Contexts

The revised AP® Spanish Language and Culture framework emphasizes **instructional contexts** within each of the six thematic units. **APunta al futuro** is intentionally written and designed so that:

- Each unit mirrors the **College Board–recommended themes and contexts**
- All **contexts** are included and are the organizing backbone of instruction
- Vocabulary, grammar, authentic sources, and performance tasks are embedded within these contexts

### Full Alignment with the New Course Project

One of the most significant updates to the AP® Spanish Language and Culture exam is the **course project**, which now includes:

- **Project Presentation** → Presentational Speaking
- **Project Question & Answer** → Interpersonal Speaking

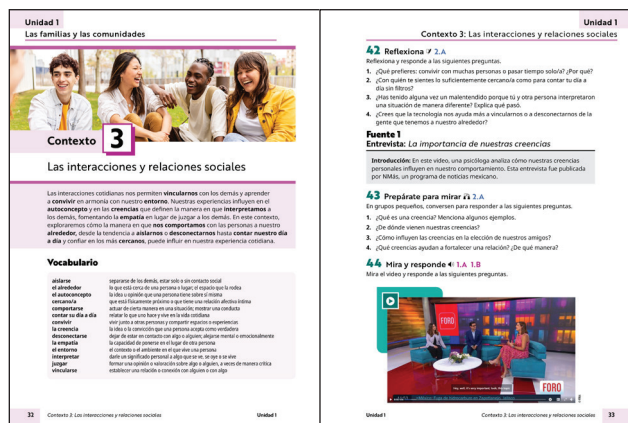
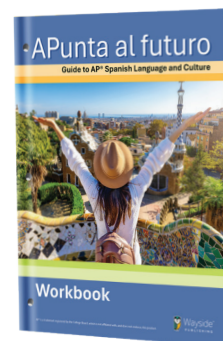
**APunta al futuro** was specifically developed to support these exam changes:

- Every unit includes scaffolded opportunities for **presentational and interpersonal speaking**
- Integrated Performance Assessments (IPAs) mirror the structure and expectations of the Project Presentation and Project Q&A
- Students regularly analyze authentic sources and synthesize information—skills essential for success on exam day

Project preparation is incorporated in all aspects of the program so that students are building the necessary skills from the very beginning of the year.

### Workbook

The **APunta al futuro** student workbook prepares students for exam success by providing additional scaffolded practice with the vocabulary and structures of each unit, as well as targeted AP® Spanish Language and Culture exam practice that mirrors exactly what students will be expected to do on the exam.



AP® is a trademark registered by the College Board, which is not affiliated with, and does not endorse, this product.

# APunta al futuro®



## Guide to AP® Spanish Language and Culture

### Built on the Revised AP® Course Skills and Learning Objectives

The updated AP® course framework streamlines skills into **three clearly defined categories**:

1. Interpretive Communication
2. Interpersonal and Presentational Communication
3. Cultural Understanding

All instructional decisions in **APunta al futuro** were made using these revised skill categories and learning objectives as a foundation:

- Every activity is explicitly aligned to AP® course skills
- Students consistently practice synthesizing information, making cultural comparisons, and demonstrating intercultural understanding
- Tasks increase in complexity over time, reflecting the progression expected by the AP® framework

This alignment ensures coherence across instruction, assessment, and exam preparation.

### Backward Design for Teacher Confidence

**APunta al futuro** was developed using a **backward design approach**, starting with the revised AP® course framework and exam requirements and building instruction accordingly. Teachers benefit from:

- Clear alignment to AP® and ACTFL standards
- Predictable unit structure grounded in the official framework
- Built-in exam preparation without sacrificing meaningful communication

AP® is a trademark registered by the College Board, which is not affiliated with, and does not endorse, this product.

**APunta al futuro**® is not simply aligned to the new AP® Spanish Language and Culture framework—it was designed for it. From instructional contexts and course skills to the redesigned course project, every element reflects a deliberate commitment to clarity, authenticity, and student success.

### Authentic Resources with Purpose

**APunta al futuro** is built on a clear and intentional commitment to **true authenticity**. The program exclusively uses **authentic sources**, defined as texts, audio, video, and visuals **created by native speakers for native speakers**, for real communicative purposes.

Unlike materials that are simplified, scripted, or written to appear authentic, **APunta al futuro** does **not** rely on contrived or artificially adapted texts. Instead, students engage with language as it is genuinely used in the Spanish-speaking world.

These authentic sources:

- Are produced by native speakers for native audiences
- Reflect real perspectives, voices, and cultural contexts
- Represent diverse regions and communities across the Spanish-speaking world
- Directly support the ACTFL Cultural Framework that focuses on products, practices, and perspectives
- Serve as the foundation for interpretive, interpersonal, and presentational tasks



[wayside.pub/APunta-al-futuro](https://wayside.pub/APunta-al-futuro)