

UBIK

R&D POLIFORM (2003)

Poliform



DESCRIPTION

Ubik offers an innovative organization for tidiness, with a wide range of containers and accessories dedicated to specific functions: trays, drawers with the front in wooden finish or glass, extractable shoe rack, trousers hanger, shirts tray. For a walk-in wardrobe which boasts both functionality and style.

UBIK

R&D POLIFORM (2003)

Poliform

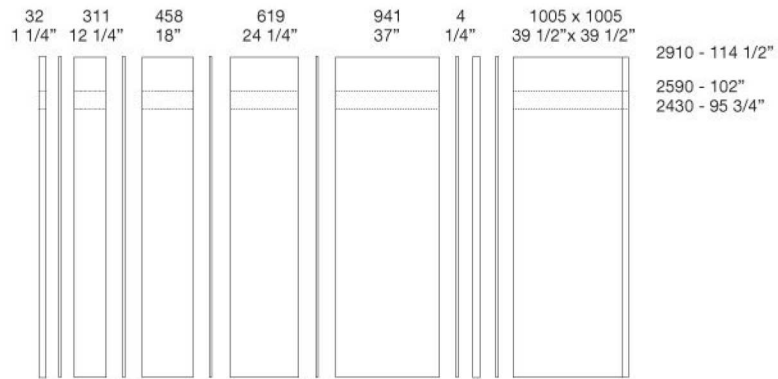
DIMENSION

ubik walk-in closet

UBIK WALL PANELING

How to calculate the dimensions

To obtain the total width, add up the back panel widths mm 32 - 1 1/4" for the initial lateral profile, mm 4 - 1/4" for each rack and 1 1/4" for the end lateral side.



Depth Ubik wall paneling

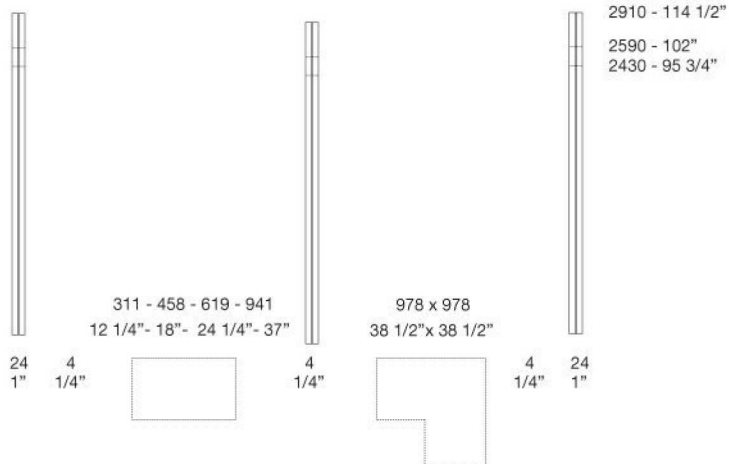
mm 460 - 18" and mm 605 - 23 3/4"



UBIK PROFILE WITH RACK

How to calculate the dimensions

To obtain the total width, add up the shelves widths, mm 24 - 1" for the initial lateral profile, mm 4 - 1/4" for each rack and mm 24 - 1" for the ending lateral profile.



Depth Ubik profile with rack

mm 434 - 17" and mm 579 - 22 3/4"

UBIK

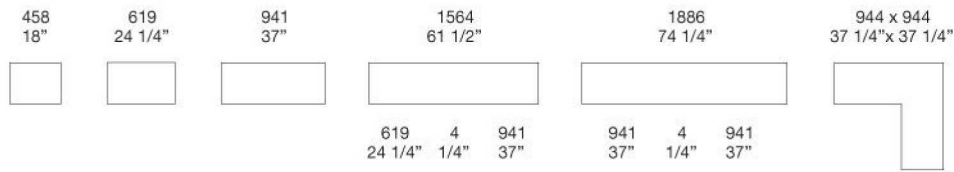
R&D POLIFORM (2003)

Poliform

DIMENSION

walk-in closet

DEPTH MM 400 - 15 3/4" - THICKNESS MM 35 - 1 1/2"



NB

Shelves w 61 1/2" and 74 1/4" are available for wall paneling only.

DEPTH MM 545 - 21 1/2" - THICKNESS MM 35 - 1 1/2"

