

SENZAFINE

R&D POLIFORM (1997)

Poliform



DESCRIPTION

The innovative walk-in closet created for orderly storage. A way to discover the exceptional variety of looks and functions within the Poliform range.

SENZAFINE

R&D POLIFORM (1997)

Poliform

DIMENSIONS

senzafine wardrobes and walk-in closet

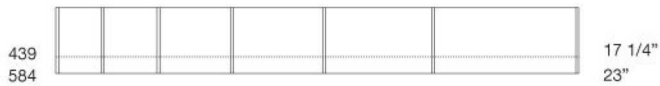


Size calculation with side thickness 25 - 1"

To obtain the total width, add to the sum of the columns mm 25 - 1" for the lateral side.

Walk-in closet size calculation with side thickness 35 - 1 1/2"

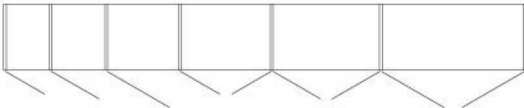
To obtain the total width, add to the sum of the columns mm 35 - 1 1/2" for the lateral side and mm 10 - 1/2" for any other side panel.



MODULARITY

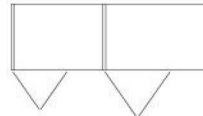
leaf door

402 15 3/4"	483 19"	644 25 1/4"	805 31 3/4"	966 38"	1288 50 3/4"
----------------	------------	----------------	----------------	------------	-----------------



folding door

805 31 3/4"	966 38"
----------------	------------



sliding door

805 31 3/4"	966 38"	1288 50 3/4"
----------------	------------	-----------------



coplanar door

805 31 3/4"	966 38"	1288 50 3/4"
----------------	------------	-----------------

