



Telemedicine for Maternal-Fetal Medicine



SMFM Telemedicine Postgraduate Course

Dallas, TX

Hilton Anatole

December 2–3, 2017

Register online at www.smfm.org/telemedicine



Faculty

- **Curtis Lowery, MD**; University of Arkansas for Medical Science
Little Rock, AR
Course Director
- **Cheryl Albuquerque, MD, MBA**
Director of Perinatal Outreach
Valley Children's Healthcare
Madera, CA
- **Nathanial DeNicola, MD, MSPH**;
University of Pennsylvania
Perelman School of Medicine
Philadelphia, PA
- **Tina Benton, BSN, RN**; University of Arkansas for Medical Science; Little Rock, AR
- **Mei Wa Kwong, JD**; Director, Center for Connected Health Policy; Sacramento, CA
- **Roz Perkins, APRN**; University of Arkansas for Medical Science; Little Rock, AR
- **Sarah Rhoads, PhD, DNP, APRN**; University of Arkansas for Medical Science



*"Telemedicine is the use of medical information exchanged from one site to another via electronic communications to improve patients' health status."
American Telemedicine Association*

This content-rich course illuminates key foundational elements of a successful telemedicine program. Maternal-fetal medicine practices are often challenged with limited space, equipment and trained staff that can function independently. A clustering of MFM providers is also driven by infrastructure needs, a referral pattern for a full array of medical services and room for practice growth to share clinical responsibilities. Telemedicine offers a mechanism for centralizing specialists by bridging the spatial gap between patient and specialist. Implementing a telemedicine solution with special considerations for videoconferencing is a relatively straightforward solution. Telemedicine lends itself to several obstetric applications and is of growing interest in the United States and worldwide. Beyond gaining an introductory familiarity with the technical equipment used for telemedicine, course participants will learn about foundational elements that broadly apply to these new models of healthcare delivery. These include subj: how patient care and the patient-doctor relationship is affected by this modality; the benefits and challenges of using telemedicine; and financial and legal considerations.

At the conclusion of this course, the participant will be able to:

1. Demonstrate the basic knowledge of telemedicine and telehealth and define the obstetrical applications of telehealth technology.
2. Demonstrate knowledge of a telemedicine encounter.
3. Demonstrate the basic ability to assess a patient in the obstetrical telemedicine setting.
4. Demonstrate the utilization of knowledge required to present and manage the patient with a specific problem.
5. Demonstrate the application of communication skills in patient and medical team communication.
6. Demonstrate knowledge of telehealth policy.

Register online at www.smfm.org/telemedicine

CME Information

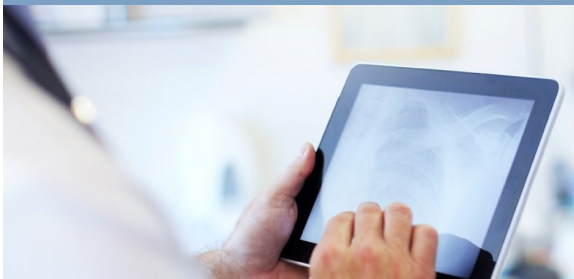
Register by
October 31
to enjoy a
\$100
discount.

This activity has been planned and implemented in accordance with the accreditation requirements and policies of the Accreditation Council for Continuing Medical Education through the joint providership of The Omnia-Prova Education Collaborative (TOPEC) and Society for Maternal-Fetal Medicine. TOPEC is accredited by the ACCME to provide continuing medical education for physicians.

Medical Complications During Pregnancy AMA

PRA Category 1 Credits™

The Omnia-Prova Education Collaborative, Inc. designates 9.75 AMA PRA Category 1 Credits™. Physicians should claim only the credit commensurate with the extent of their participation in the activity.



Register online at www.smfm.org/telemedicine

Schedule and Objectives

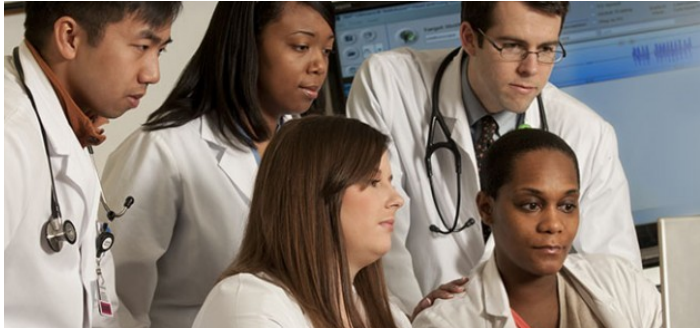
Day 1

Time	Topic	Speaker(s)	Objectives
8:00 am	Breakfast		
8:30—8:45 am	<ul style="list-style-type: none"> Opening Remarks Housekeeping items Course goals and objectives Introductions 	Curtis Lowery and Cheryl Albuquerque	
8:45 am	Telehealth 101	Sarah Rhoads, Tina Benton and Cheryl Albuquerque	<ul style="list-style-type: none"> Define basic terms relating to telehealth and telemedicine. Discuss benefits of telehealth technology and beneficiaries. Describe potential Obstetrical applications for telehealth technologies. Discuss the current climate related to technology and telehealth in healthcare.
9:45 am	Break		
10:00 am	Business Model for Telemedicine	Mei Wa Kwong and Tina Benton	 <ul style="list-style-type: none"> Understand best practices and clinical / educational opportunities in obstetrical telemedicine. Analyze the effect telemedicine has on decreasing face-to-face clinical visits. Differentiate between the different types of reimbursement used in telemedicine. Describe the barriers and solutions to common billing, reimbursement, licensure, and credentialing issues in telemedicine.



Register online at www.smfm.org/telemedicine

Schedule and Objectives

Time	Topic	Speaker(s)	Objectives
11:00 am	Telemedicine Regulations	Mei Wa Kwong and Curtis Lowery	<ul style="list-style-type: none"> • Provide an overview of telehealth policy. • Discuss national and state rules and regulations. • Determine the steps needed to implement telehealth related to telehealth policy. • Provide lessons learned from telehealth experts related to telehealth implementation.
12:00—1:30 pm Lunch			Q & A related to Policy and Telehealth
1:30 pm	Telemedicine Teams <ul style="list-style-type: none"> • Coordination of Care • Electronic Medical Record Management 	Roz Perkins	<ul style="list-style-type: none"> • Determine which obstetrical telemedicine modalities and applications may best benefit a practice. • Identify ways to incorporate telehealth into current health care settings. • Discuss examples of rural telehealth programs. • Provide examples of how telehealth is impacting urban residents. • Describe how OB/GYN practice can be administered via telemedicine.
2:30 pm	Break		
2:45 pm	Education Resources for You, Your Office Personnel and Patients	Sarah Rhoads	<ul style="list-style-type: none"> • Discuss online education opportunities. • Verbalize ways to coordinate education opportunities to standardized practice between clinical sites. • Describe patient education opportunities to support clinical care.



Schedule and Objectives

Time	Topic	Speaker(s)	Objectives
3:00 pm	Tele-presenting Etiquette	Sarah Rhoads and Roz Perkins	<ul style="list-style-type: none"> • View telehealth case studies. • Present over telemedicine using the principles of tele-presenting. • Describe the difference between face-to-face counseling and counseling over interactive video. • Identify the process of a typical telemedicine consultation.
			
4:15 pm	Debrief and Q&A	All Faculty	
DAY 2			
8:00 am	Breakfast		
9:00 am	Equipment Review <ul style="list-style-type: none"> • Internal • External 	Roz Perkins and Tina Benton	<ul style="list-style-type: none"> • List needed equipment, approximate price, and various options for technical needs. • Develop a business plan for acquiring the equipment needed. • Define telehealth, telemedicine and distance health technologies. • Discuss ways to assess telehealth readiness.
			
10:00 am	Break		
10:30 am	Web-based Applications and Software Review <ul style="list-style-type: none"> • Direct to Patient • mHealth 	Sarah Rhoads and Nathaniel DeNicola	<ul style="list-style-type: none"> • Interact with direct-to-patient, remote patient monitoring, and mHealth telemedicine equipment. • Explain how remote patient monitoring and mHealth are being used to improve patient outcomes. • Determine needs for direct-to-patient and mHealth technologies.

Register online at www.smfm.org/telemedicine

Schedule and Objectives

Time	Topic	Speaker(s)	Objectives
11:30 am	Next Steps <ul style="list-style-type: none">• Q&A• Hands-on Equipment• Telehealth integration	All Faculty	<ul style="list-style-type: none">• Compare the telehealth and telemedicine technologies available.• Demonstrate the correct use of the clinical peripheral tools on a telemedicine clinical cart.• Demonstrate appropriate selection and use of tools during a case based simulation.
1:00 pm	Dismissal		

SMFM TELEMEDICINE COURSE REGISTRATION FORM

All Course fees include continental breakfast, lunch on Saturday, coffee breaks, and course materials. If you have questions about registration, contact the SMFM Registrar, Kara Shumaker, at kshumaker@smfm.org.

Cost Until October 31

Cost After October 31

Physicians	\$700	\$800
Nurses, PAs, Admin Staff	\$550	\$650

To register by mail, return this form to: SMFM Registrar, 409 12th Street, SW, Washington DC 20024 or via email to kshumaker@smfm.org. The number of participants is limited and registrations will be honored in the order in which they are received. Cancellations must be in writing and received in the Registrar's office a minimum of two weeks prior to the course. No refunds will be given after that time. A \$75 administrative fee will be charged for cancellations. Substitutions are accepted.

FIRST NAME

LAST NAME

DEGREE(S)

ADDRESS

PHONE

E-MAIL

Method of Payment:

CHECK ENCLOSED

VISA

MASTERCARD

AMERICAN EXPRESS

CREDIT CARD NUMBER

EXPIRATION DATE

SECURITY CODE

A block of rooms has been reserved at the Hilton Anatole at the special group rate of \$169/night. Room reservations should be made by calling the reservations office at 800-955-4281 or by going to the Hilton's website (<http://bit.ly/2ipRxZt>). Attendees must book their room by November 10 and identify their affiliation with the group code TLM to receive the special group rate.

Register online at www.smfm.org/telemedicine