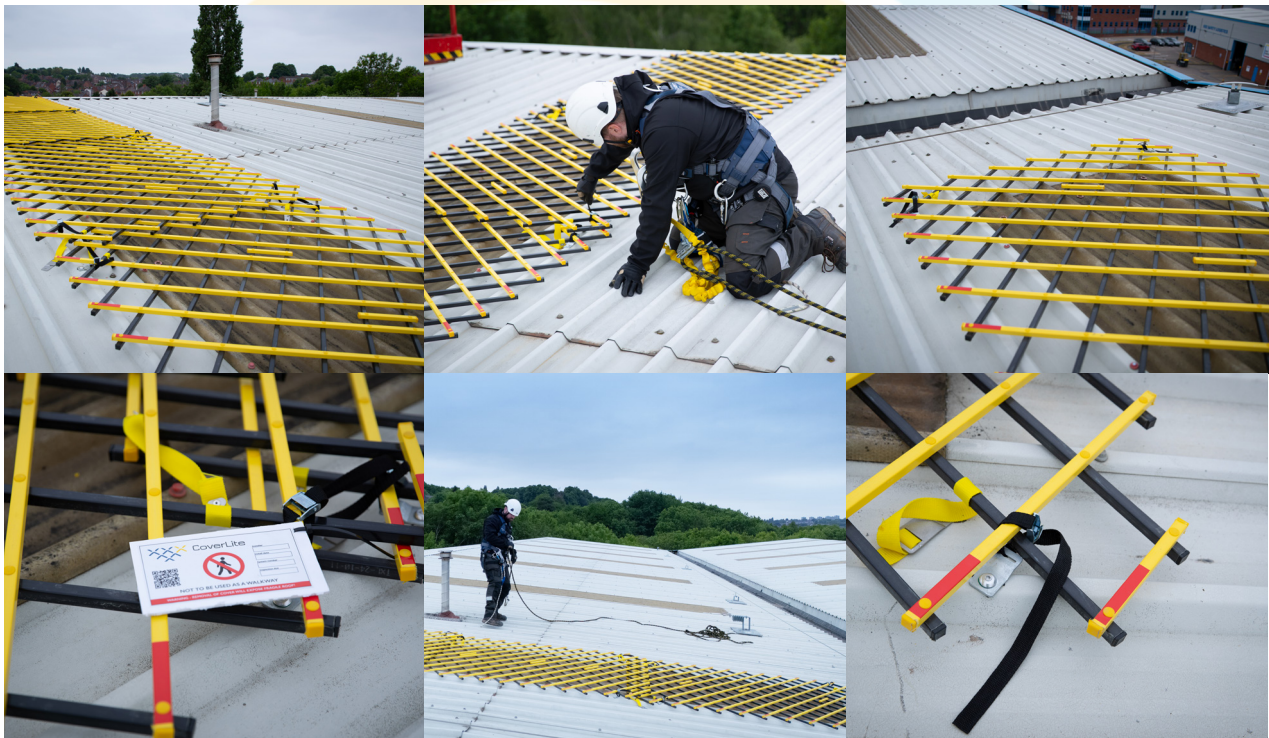


CoverLite Temporary Skylight Protection IAM Manual



- Portable, temporary skylight covers for roof light fall protection
- Prevent falls through skylights during roof maintenance and construction
- Compatible with a wide range of different sized skylights
- Lightweight and easy to transport onto the roof

CoverLite

Temporary Skylight Protection Cover

CoverLite Size & Weight

Closed Size: 2,000mm x 400mm

Open Size: 1.7m x 2.0m

Weight: 12.6kg

Parts List

- **OSCBRKTPK10** - Temporary Skylight Bracket Pack
- **OSCINSTPCK10** - Temporary Skylight Installation Pack
- **OSCTSCXL60** - CoverLite Temporary Skylight Cover

Tool List

- Electric/battery powered drill
- 8mm drill bit suitable for drilling steel
- Riveter capable of accepting 7.7mm rivets
- Permanent marker
- Measuring tape

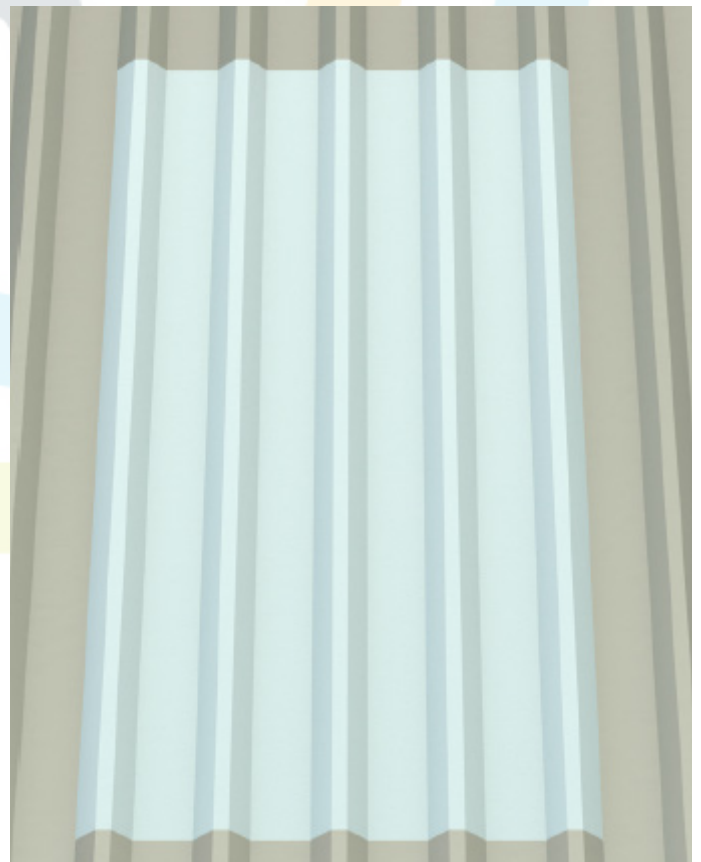
Pre-use Cover Check

- Open and close cover ensuring freedom of movement
- Check for signs of damage, cracks splits, or de-lamination
- Ensure all rivets are present and correct. Check condition of fixings and straps.

Method Statement for Rooftop Deployment

Step 1 - Preparation

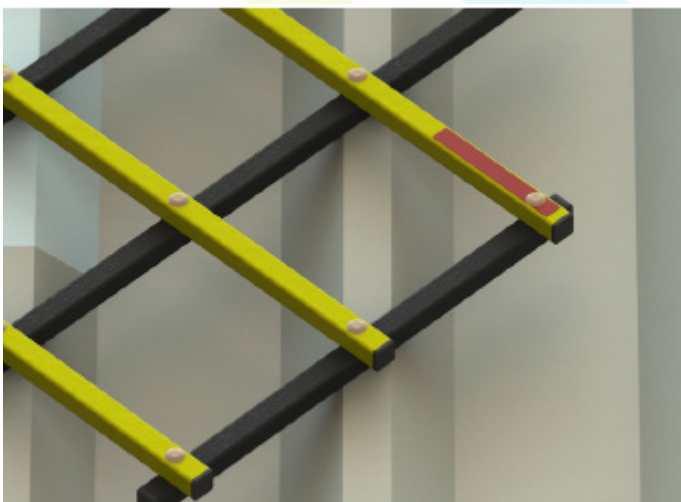
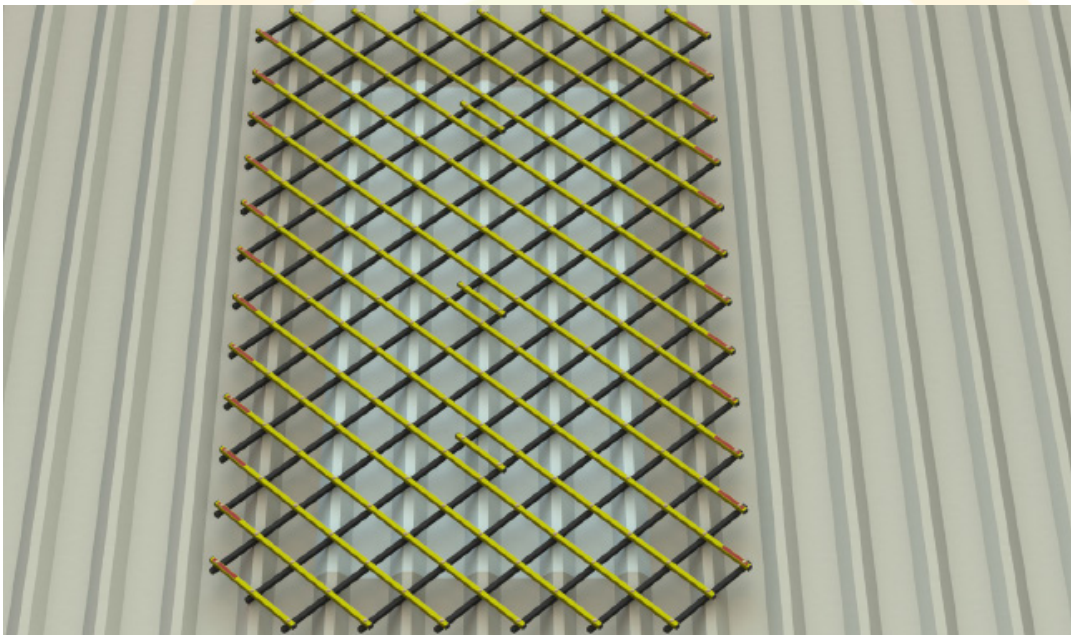
1. Identify the skylight to be protected
2. Ensure the area is clear of obstruction, and that the roof crowns immediately adjacent to the skylight are available and accessible, to enable installation of the bracket used to strap the cover down at the four location points during use.



Step 2 - Gain access and Deploy CoverLite Cover

1. Working from a position of safety, and/or attached to a structured anchor, open the cover and lay it on top of the skylight.

2. Care must be taken to ensure that the CoverLite covers the skylight across the width, incorporating the next crown along on both sides. This is the crown which the fixing brackets will be attached to and, subsequently, the cover strapped down to.



DANGER TO LIFE!



It is imperative that you should always work from a position of safety and/or are attached to a structural anchor to avoid endangering your life and safety.



Step 3 - Locate Fixing Brackets

1. CoverLite requires four fixing brackets to be installed into the roof, per cover. Two brackets and straps should firstly be installed along the longest edge (**whilst working from a position of safety and/or attached to a structural anchor**) as this will secure the cover into position and offer a degree of protection whilst installing the remaining brackets.

Note: the bracket and strap connection should be located at the last but one intersection point of the matting bars, on top of a crown of the roof profile. It may be necessary to open/close/manoeuvre the cover incrementally to achieve this.



Step 4 - Mark and Drill Holes for Fixing Brackets

1. Once the position of the cover is confirmed, offer the bracket to the roof, located at the upper intersection of the bars, orientate the bracket such that the slot is closest to the cover. Mark the hole position on the roof.

2. Using an 8mm drill bit and appropriate PPE, drill an 8mm hole on the mark previously made.

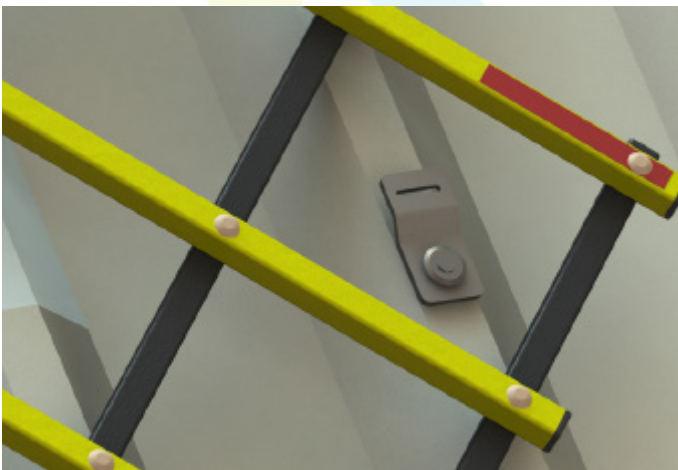
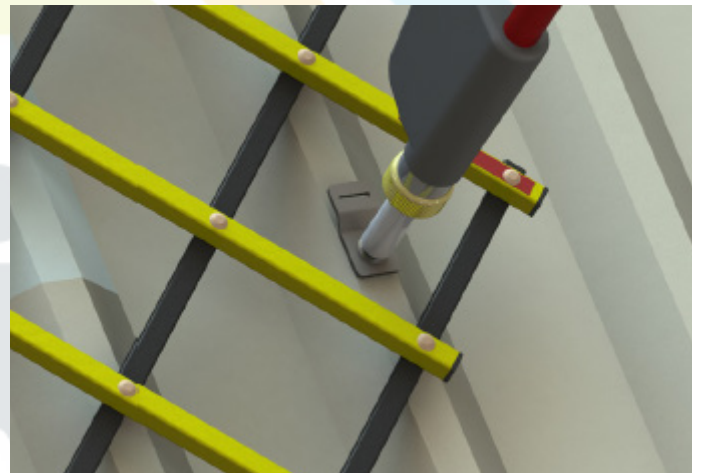
Step 5 - Insert Rivets

1. Orientate fixing bracket such that the integral EPDM seal is in direct contact with the roof profile to form a weatherproof seal.

2. Insert the rivet into the bracket fixing hole.

3. Offer assembly up to the roof using the previously drilled hole for location.

4. Orientate the bracket such that the slot is facing the intersection of the matting bars, rivet into place.



Step 6 - The Down Fixing Straps

1. Locate the supplied fixing strap, and insert into the slot of the fixing bracket.

2. Loop through the underside of the cover, and over the top, ensuring that both intersection bars are in the loop.

3. Whilst holding the buckle, release the clasp and insert the strap to the rear of the buckle - once through, pull tight down on the cover.

4. Repeat steps 1-6 for the remaining three locations as shown ensuring that the two brackets to be located along the longest edge are completed first, and the straps deployed, therefore fixing the cover into position, before installing the remainder.



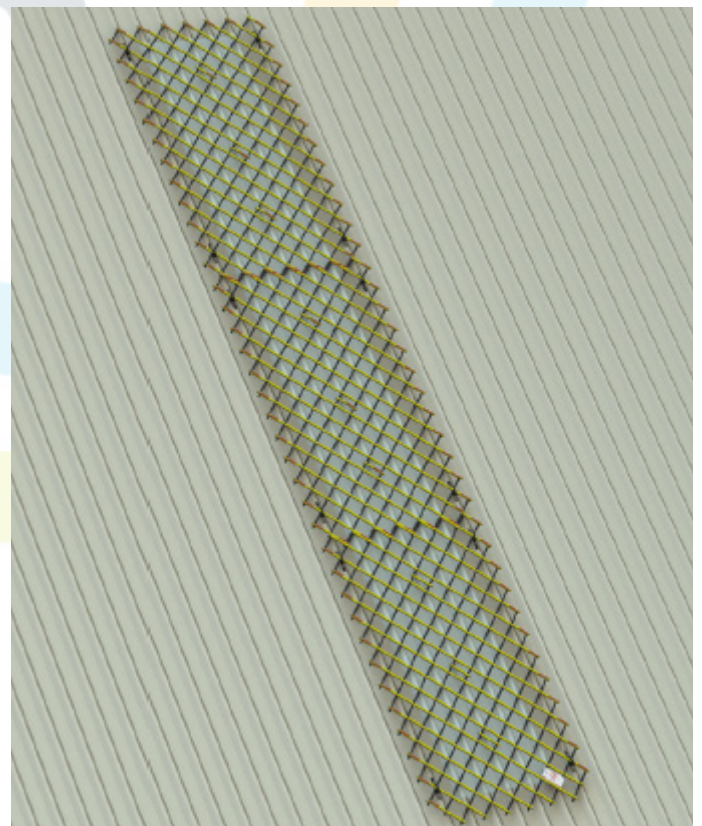
Step 7 - Attach Warning Plaque

1. Attach 'Do not walk' signage and identification plaque to unit using supplied cable ties.
2. Ensure strap access is not obstructed and is clearly visible to operatives in and around the placement of the cover.



Step 8 - Final Checks and Extra Matting Installation

1. Ensure all straps and brackets are securely fastened and secured, and that signage is present and correct.
2. It may be necessary to install subsequent covers to offer the correct level of protection on the skylight; where this is true, working from a position of safety and/or attached to a structural anchor, subsequent covers should be installed adjacent to the previously installed cover, ensuring that an overlap of covers is present of at least 1 bar assembly when laying out the cover as per step 2 of this guide.
3. Following successful location, repeat steps **3-8** as advised in this document.





T: 0121 281 5584

E: info@simplifiedsafety.co.uk

W: www.simplifiedsafety.co.uk

A: Unit A2, Cradley Business Park,
Overend Road, Cradley Heath, West
Midlands, B64 7DW, United Kingdom

COVERLITE is a trademark of Kee Safety Limited. Whilst every effort has been made to ensure the accuracy of the information contained in this brochure Kee Safety Group Ltd and/or its subsidiaries cannot be held responsible for any errors or omissions. Kee Safety Group Ltd, its affiliates and subsidiaries reserve the right to alter or withdraw products without prior notice. Kee Safety Group Ltd and/or its subsidiaries accepts no responsibility for any loss or damage arising from improper use of their products. ©2025 Kee Safety Limited Ltd. All Rights Reserved.

