

NOTICE

*Please make sure that you have all parts indicated and they are in good condition before you begin assembly of this item. Refer to part list and hardware list below for guidance.

*This item should be assembled on a soft surface to prevent scratching the finish during assembly.

*This item may require periodic tightening.

*If you are having difficulty, our friendly Customer Care team is always here to help. Please email customersupport@safavieh.com

PREPARATION

*Before beginning assembly of product, make sure all parts are present. Compare parts with part contents list and hardware contents list.

*If any part is missing or damaged, do not attempt to assemble the product.

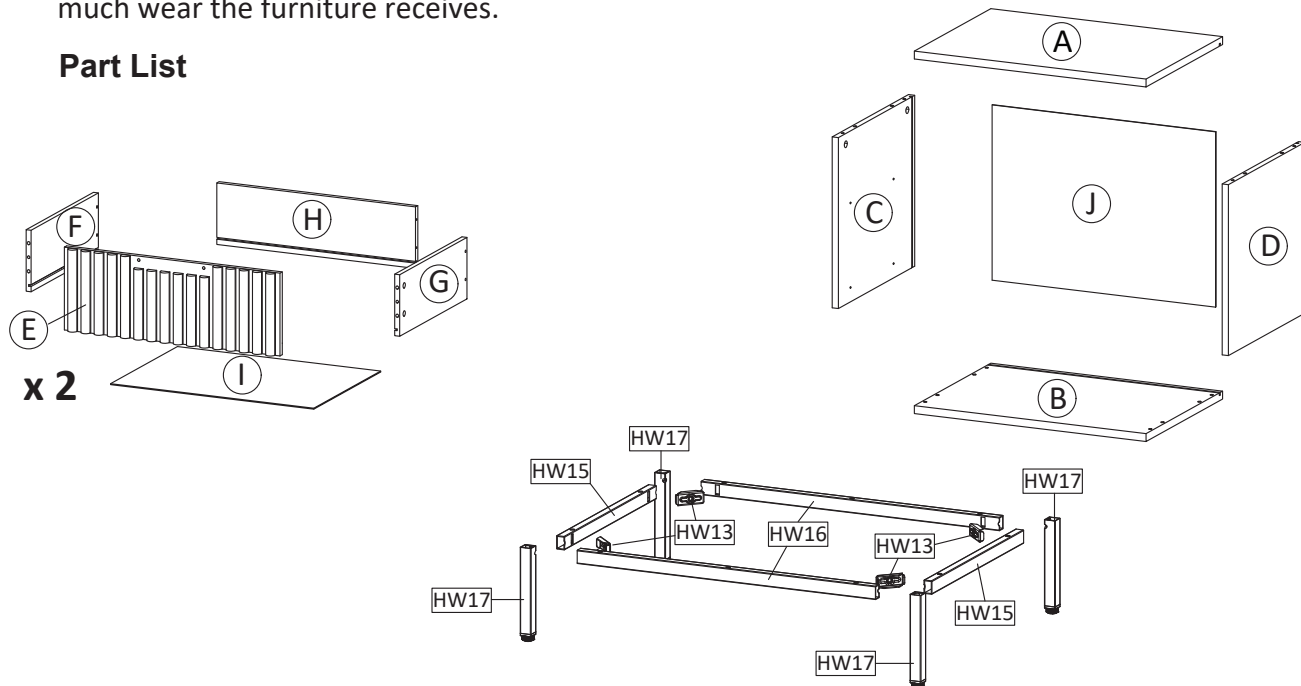
*Estimated Assembly Time: 60 minutes.

*Tools Required for Assembly (included): Allen Key

CARE AND MAINTENANCE

Always use felt pads under all articles to prevent discoloration or softening of the lacquer. Plastic and rubber bases on items can discolor wood. Wipe up spills immediately and avoid common hazards such as hot dishes, harsh solvents and abrasives. Cleaning should be done with a soft lint free cotton cloth dampened with water or furniture polish. On highly used surfaces we recommend applying a quality paste wax which should be used on a regular basis to provide additional protection from scratches and spills. How often you apply the wax depends on how much wear the furniture receives.

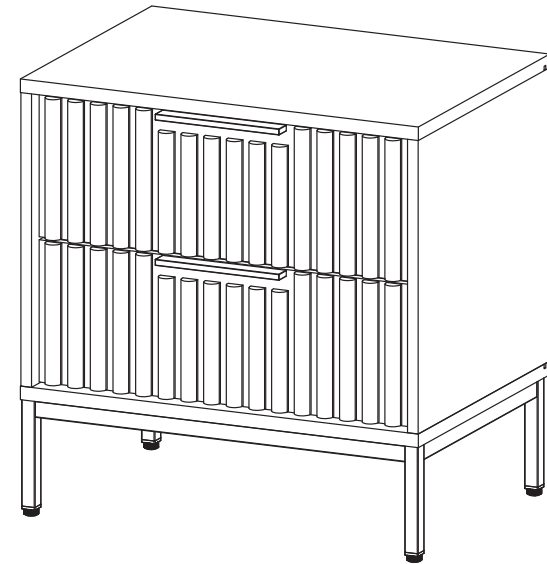
Part List



 **SAFAVIEH**
FURNITURE

Model# NST9605

Product Dimensions: 22.13"Wx15.67"Dx22.80"H



WARNING :

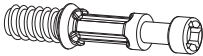






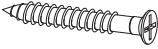


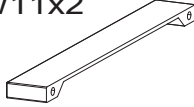

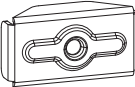
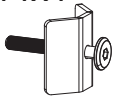



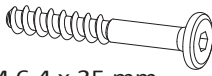


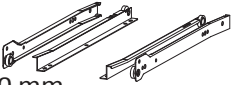
WEIGHT CAPACITY: 26.4 LBS.

DRAWER LOAD CAPACITY 22 LBS

Warning : Do not stand on chest.

Warning : Do not over torque bolts.

Hardware List

HW1x12  \varnothing 6 x 35 mm	HW2x4  \varnothing 15 mm	HW3x8  \varnothing 8 x 30 mm	HW4x4  \varnothing 6 x 30 mm	HW5x4  M 7 x 50 mm	HW6x1  L 4
HW7x8  \varnothing 12 mm	HW8x8  M 8 x 39 mm	HW9x8  M 6 x 10.5 mm	HW10x12  M 3.5 x 13 mm	HW11x2  	HW12x4  M 4 x 22 mm
HW13x4  	HW14x4  	HW15x2  	HW16x2  	HW17x4  	HW18x10  M 6.4 x 35 mm
HW19x14  	HW20x14  M 3.5 x 15.5 mm	HW RM35Ax2  350 mm			

Part List & HW For Multi-Box Items

Piece	Description	Qty
A	Top Board	1
B	Bottom Board	1
C	Side Board Left	1
D	Side Board Right	1
E	Front Drawer	2
F	Side Drawer Left	2
G	Side Drawer Right	2
H	Back Drawer	2
I	Bottom Drawer	2
J	Back Board	1

Piece	Description	Qty
HW1	Cambolt	12
HW2	CamLock Big	4
HW3	Dowel Big	8
HW4	Dowel Small	4
HW5	Screw M 7 x 50 mm	4
HW6	Allen Key	1
HW7	CamLock Small	8
HW8	Screw M 8 x 39 mm	8
HW9	Screw M 6 x 10.5 mm	8
HW10	Screw M 3.5 x 13 mm	12
HW11	Handle	2
HW12	Screw M 4 x 22 mm	4
HW13	Corner Brace	4
HW14	Support Corner Brace&Screw M 6 x 35 mm	4
HW15	Support Metal Leg 1	2
HW16	Support Metal Leg 2	2
HW17	Metal Square Leg	4
HW18	Screw M 6.4 x 35 mm	10
HW19	Wedge	14
HW20	Screw M 3.5 x 15.5 mm	14
HW RM35A	Drawer Runner	2

PREPARATION

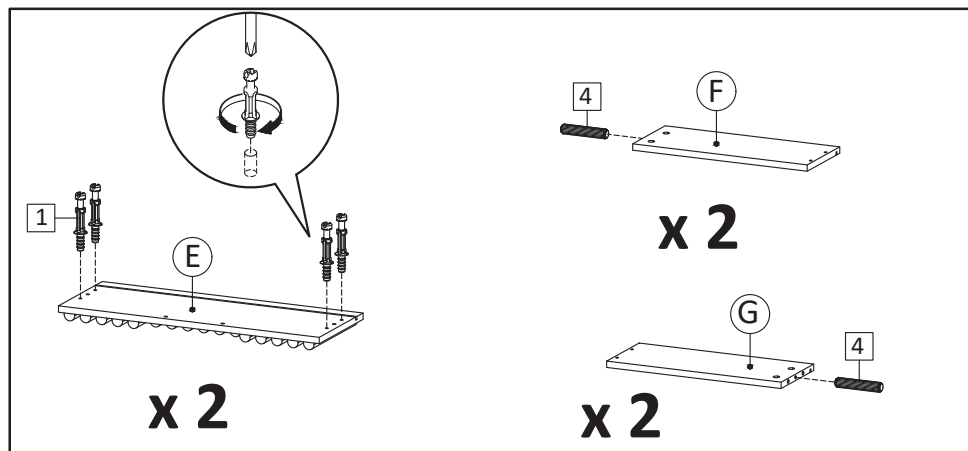
*Before beginning assembly of product, make sure all parts are present. Compare parts with part contents list and hardware contents list.

*If any part is missing or damaged, do not attempt to assemble the product.

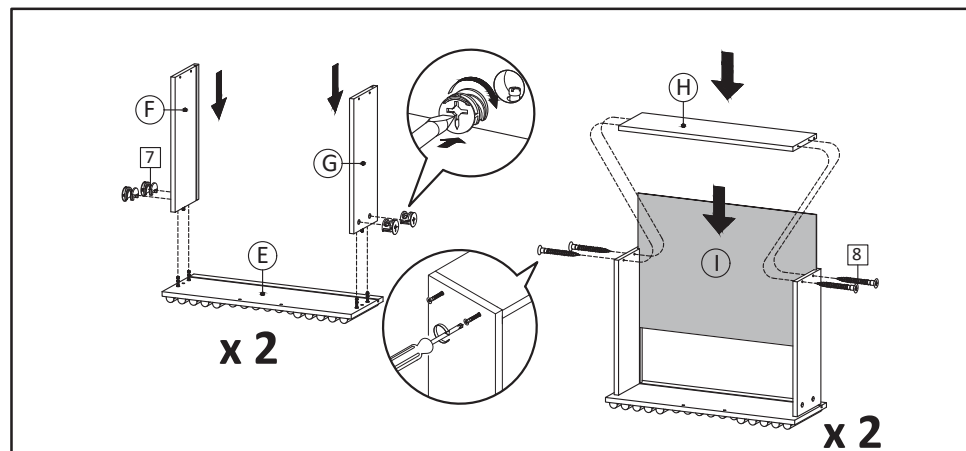
*Estimated Assembly Time: 60 minutes.

*Tools Required for Assembly (included): Allen Key

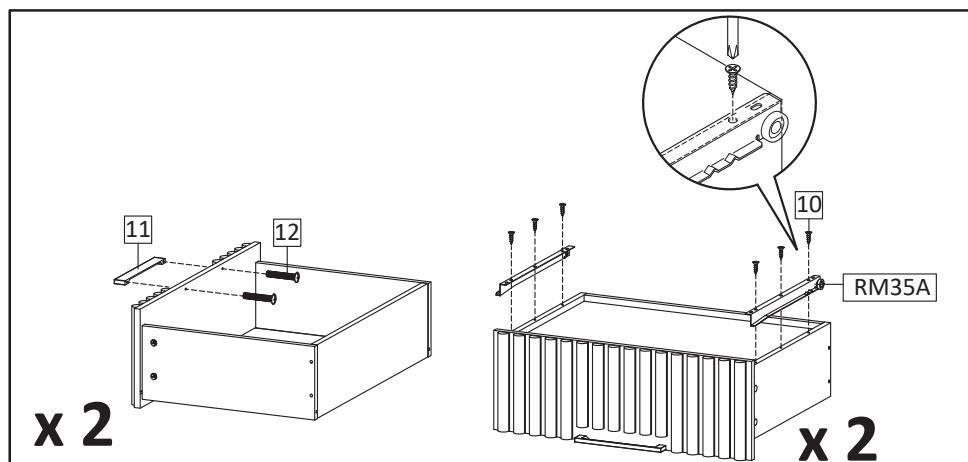
*If you are having difficulty, our friendly Customer Care team is always here to help. Please email customersupport@safavieh.com



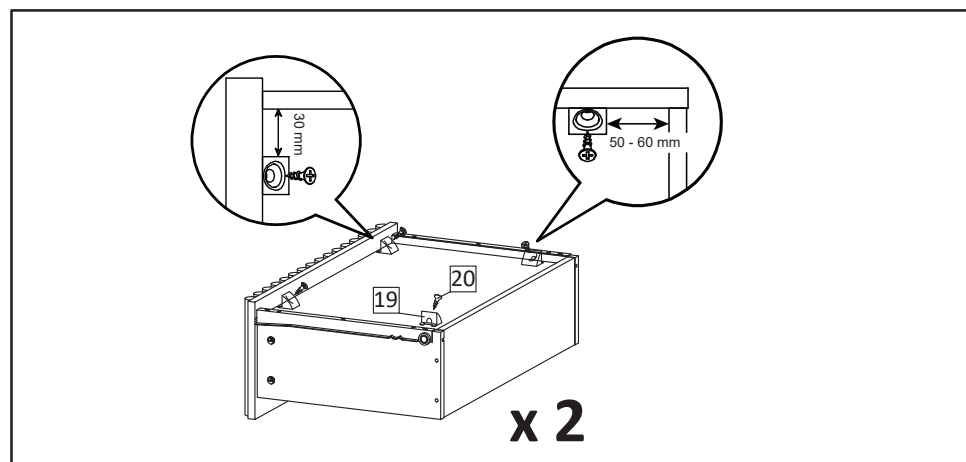
STEP1: Insert Cambolt (HW1) into Front Drawer (E).
Insert Dowel Small (HW4) into Side Drawers (F & G).



STEP2: Combine Side Drawers (F & G) into Front Drawer (E)
then tighten camlock (HW7) using screwdriver. Insert Bottom Drawer (I)
with laminated face facing upward then put Back Drawer (H)
and secure with Screw M8x39mm (HW8).



STEP3: Use Screw M4x22mm (HW12) to attach Handle (HW11)
to the Front Drawer.
Install the Drawer Runner (HW RM35A) into position as shown in picture.
Secure with screws M3.5x13mm (HW10)



STEP4: Insert the Screw M3.5x15.5mm (HW20) and wedge (HW19)
into the bottom of the drawer according to the picture.

PREPARATION

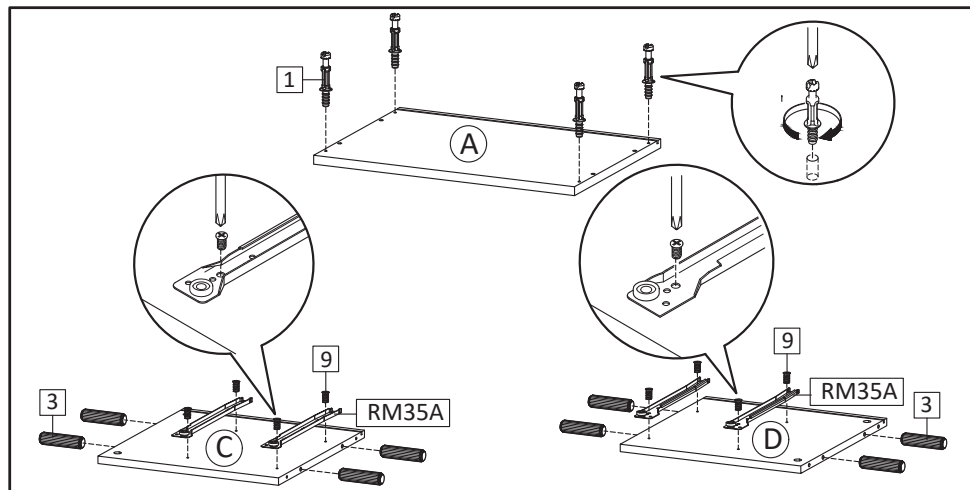
*Before beginning assembly of product, make sure all parts are present. Compare parts with part contents list and hardware contents list.

*If any part is missing or damaged, do not attempt to assemble the product.

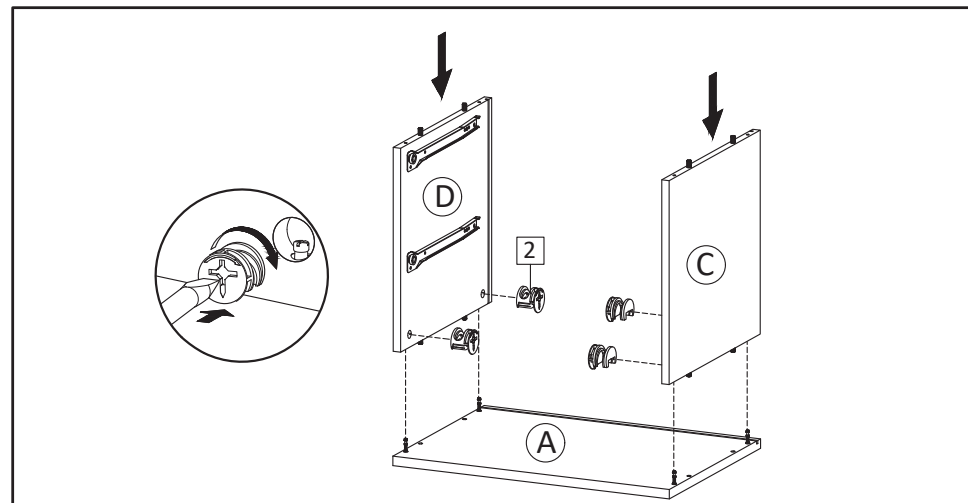
*Estimated Assembly Time: 60 minutes.

*Tools Required for Assembly (included): Allen Key

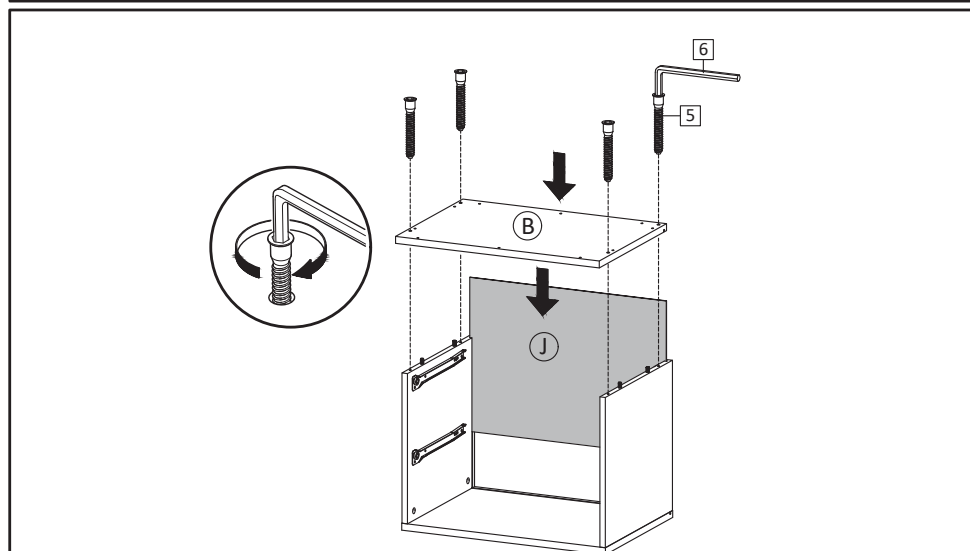
*If you are having difficulty, our friendly Customer Care team is always here to help. Please email customersupport@safavieh.com



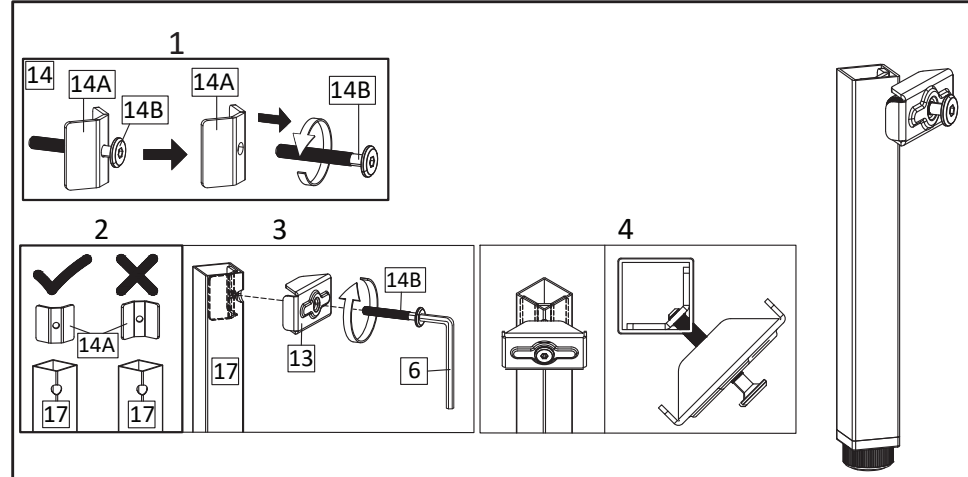
STEP5: Insert Cambolt (HW1) into Top Board (A), and Insert Dowel Big (HW3) into Side Board Left (C) and Side Board Right (D). Continue with securing part of the Drawer Runner (HW RM35A) into position as the above image, using screw M6x10.5mm (HW9).



STEP6: Attach Side Board Left (C) and Side Board Right (D) into Top Board (A). Secure with Camlock Big (HW2) and tighten it using screwdriver.



STEP7: Attach Back Board (J) and Insert Bottom Board (B), secure with Screw M7x50mm (HW5), tighten screws using Allen Key (HW6).



STEP8: First, remove the M6 x 35 mm screw (HW14B) from the Support Corner Brace (HW14A). Second, insert the Support Corner Brace (HW14A) into the Leg (HW17), ensuring that the hole in the Support Corner Brace aligns with the hole in the Leg. Third, insert the M6 x 35 mm screw (HW14B) into the hole in the Corner Brace (HW13), and insert it into the hole in the Leg, then tighten it slightly.

PREPARATION

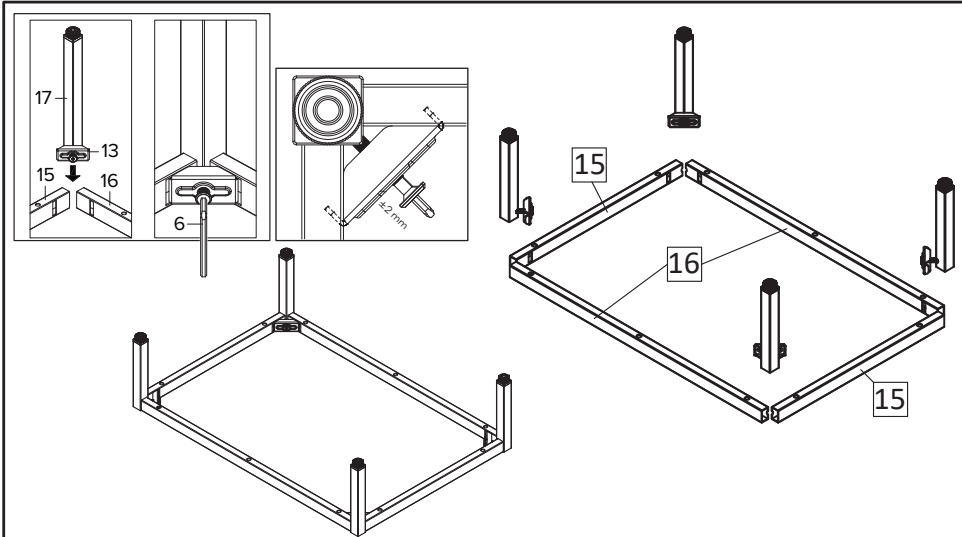
*Before beginning assembly of product, make sure all parts are present. Compare parts with part contents list and hardware contents list.

*If any part is missing or damaged, do not attempt to assemble the product.

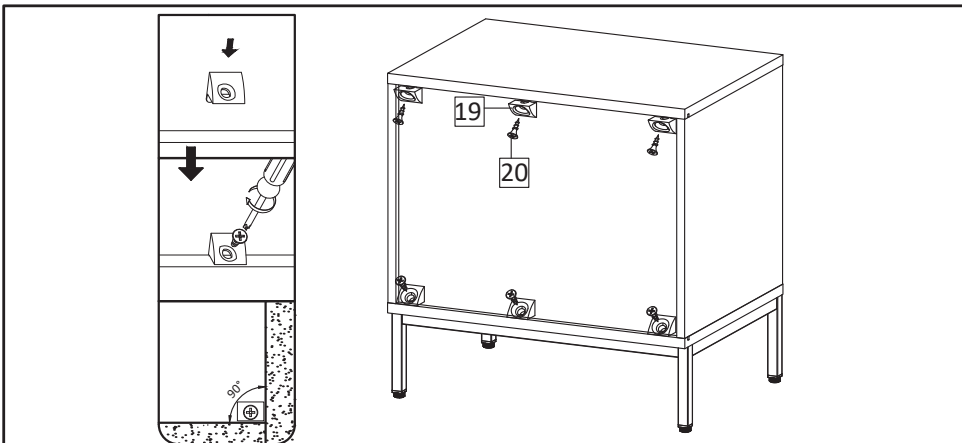
*Estimated Assembly Time: 60 minutes.

*Tools Required for Assembly (included): Allen Key

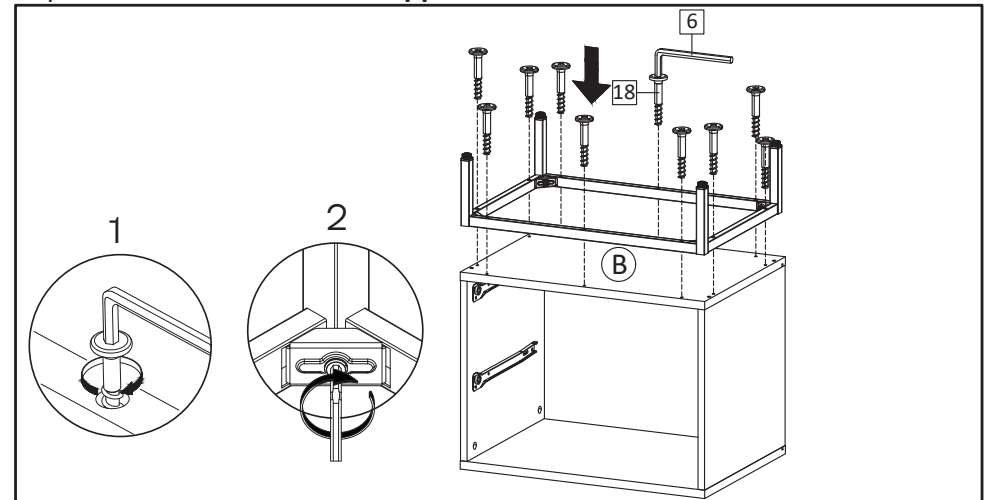
*If you are having difficulty, our friendly Customer Care team is always here to help. Please email customersupport@safavieh.com



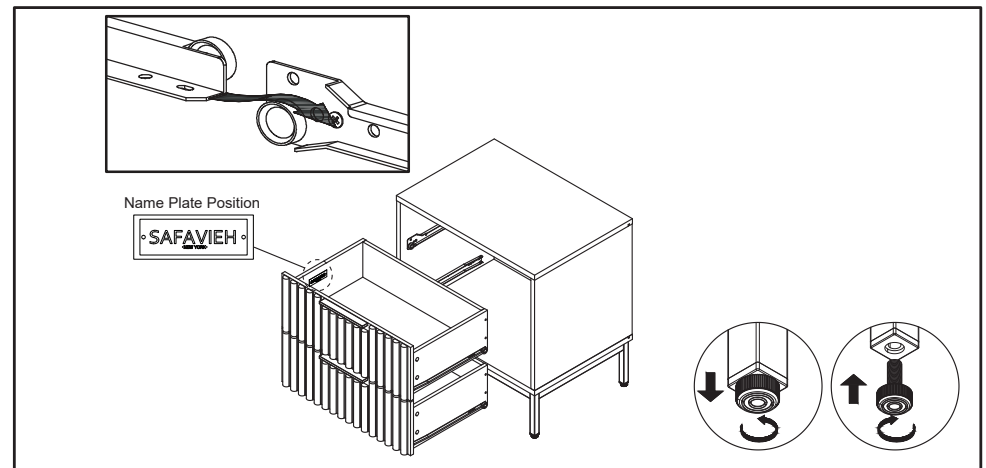
STEP9: Place Support Metal Leg 1 (HW15) and Support Metal Leg 2 (HW16) on the floor as shown in the image. Then, install the prepared leg (HW17). Ensure that the Corner Brace (HW13) hooks into the holes of Support Metal Leg 1 (HW15) and Support Metal Leg 2 (HW16). Use the Allen Key (HW6) to slightly tighten the screws, just enough to hold the Support Metal Legs in place. Do not fully tighten them. Repeat this process for the remaining legs.



STEP11: Use Wedge (HW19), Screw M 3.5 x15.5 (HW20) to tighten the back of night stand by using screwdriver. Please align the top board and bottom board in 90° position against the side board, before securing the wedges (HW19)



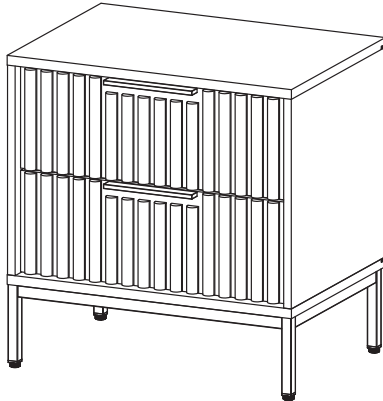
STEP10: Install the assembled leg unit from Step 9 onto the Bottom Board (B). Then, insert the M6.4 x 35 mm screws (HW18) into all the Corner Braces (HW13), Support Metal Leg 1 (HW15), and Support Metal Leg 2 (HW16). Tighten all screws using the Allen Key (HW6).



STEP12: Hold the sides of the drawer and position the rail wheels, one the back of drawer and the others on the side boards according to the image. Slide the drawer on by one into the nightstand. Place your furniture on a level floor. The legs come with adjustable levels, adjust them as needed until the furniture sits steadily on the floor.

PREPARATION

- *Before beginning assembly of product, make sure all parts are present. Compare parts with part contents list and hardware contents list.
- *If any part is missing or damaged, do not attempt to assemble the product.
- *Estimated Assembly Time: 60 minutes.
- *Tools Required for Assembly (included): Allen Key
- *If you are having difficulty, our friendly Customer Care team is always here to help. Please email customersupport@safavieh.com



STEP13: Assembly is complete.

TIPPING RESTRAINTS KIT INSTALLATION GUIDANCE

Different wall materials require unique wall fasteners.

The wall plugs (AA2) and screws (AA3) are designed for fixing to concrete walls only.

Please consult your local hardware store to ensure you are using the correct hardware for your wall type.

