

CARE AND MAINTENANCE





Spot clean using a mild water-free solvent. Only a professional cleaner should undertake a complete overall cleaning.

The use of steam or water-based cleaners may cause excessive shrinking or staining.

NOTICE

- * Please make sure that you have all parts indicated before you begin assembly of this item
- * This item should be assembled on soft surface to prevent scratching the finish during assembly
- * This item may require periodic tightening

Part List and Hardware List

PIECE	DESCRIPTION	PICTURE	QUANTITY
A	NIGHTSTAND		1X
B	HANDLE		1X
C	Nuts Dia 0.5" x 1"		1X
D	L Key		1X

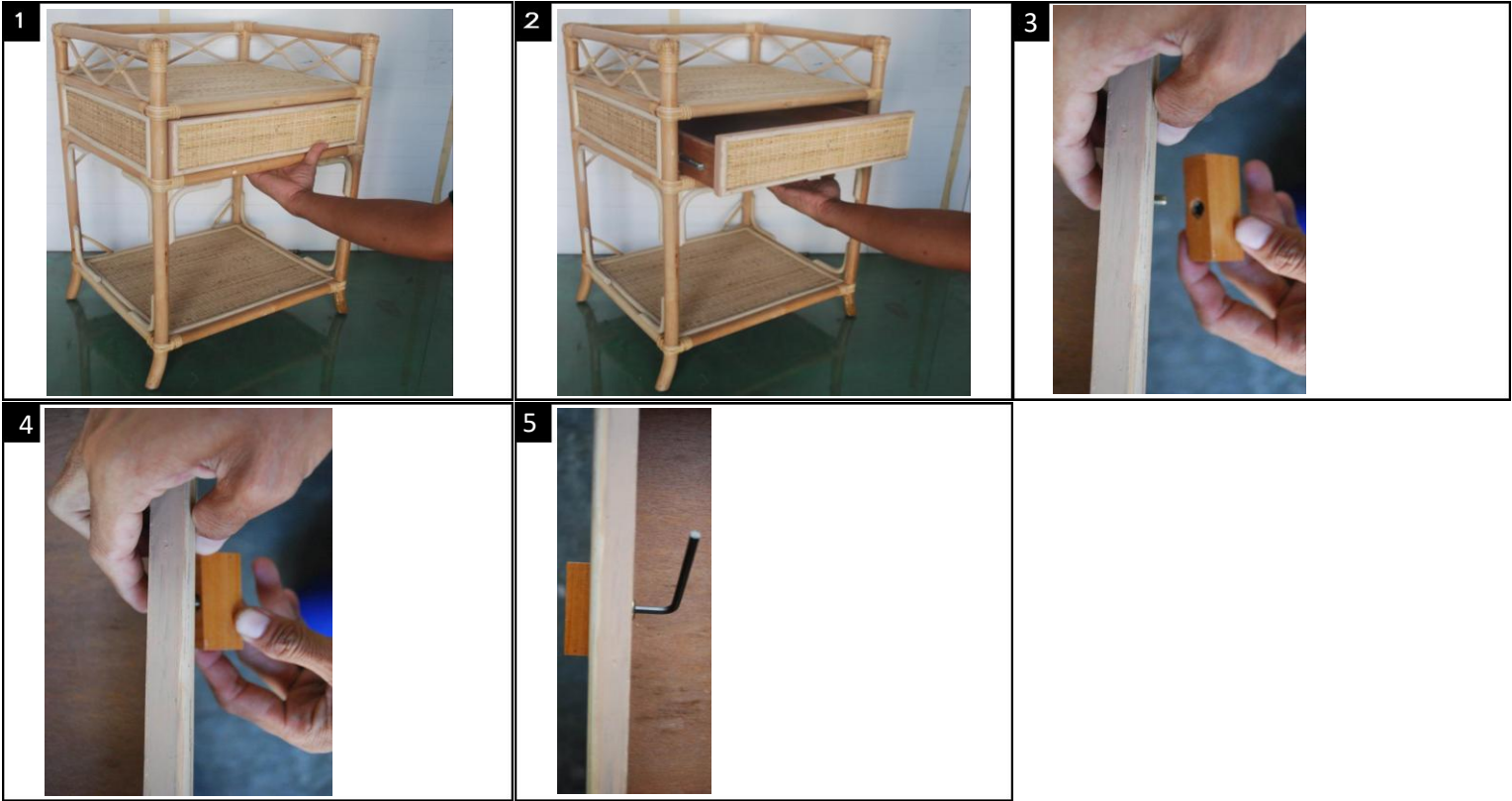
Model #NST4004A
Product Dimensions : 18.5" x 16.1" x 26"



PREPARATION

Before beginning assembly of product, make sure all parts are present. Compare parts with package contents list and hardware contents list.

If any part is missing or damaged, do not attempt to assemble the product.



- Step 1 : Put your hand on the bottom of drawer like picture # 1
- Step 2 : Pull the drawer from the bottom until pull out with hand like picture #2
- Step 3 : Insert nuts at hole on front of drawer like picture #3
- Step 4 : Assembly Handle with nuts, than spin off the handle like picture #4
- Step 5 : Tighten the handle from inside like picture #5