

CARE AND MAINTENANCE





Spot clean using a mild water-free solvent. Only a professional cleaner should undertake a complete overall cleaning.

The use of steam or water-based cleaners may cause excessive shrinking or staining.

NOTICE

- * Please make sure that you have all parts indicated before you begin assembly of this item
- * This item should be assembled on soft surface to prevent scratching the finish during assembly
- * This item may require periodic tightening

Part List and Hardware List

PIECE	DESCRIPTION	PICTURE	QUANTITY
A	NIGHTSTAND		1X
B	NATURAL HANDLE		2X
C	Nuts Dia 1.25" x 1"		2X
D	L Key		1X

Model #NST4003A
Product Dimensions : 18.5" x 20.8"

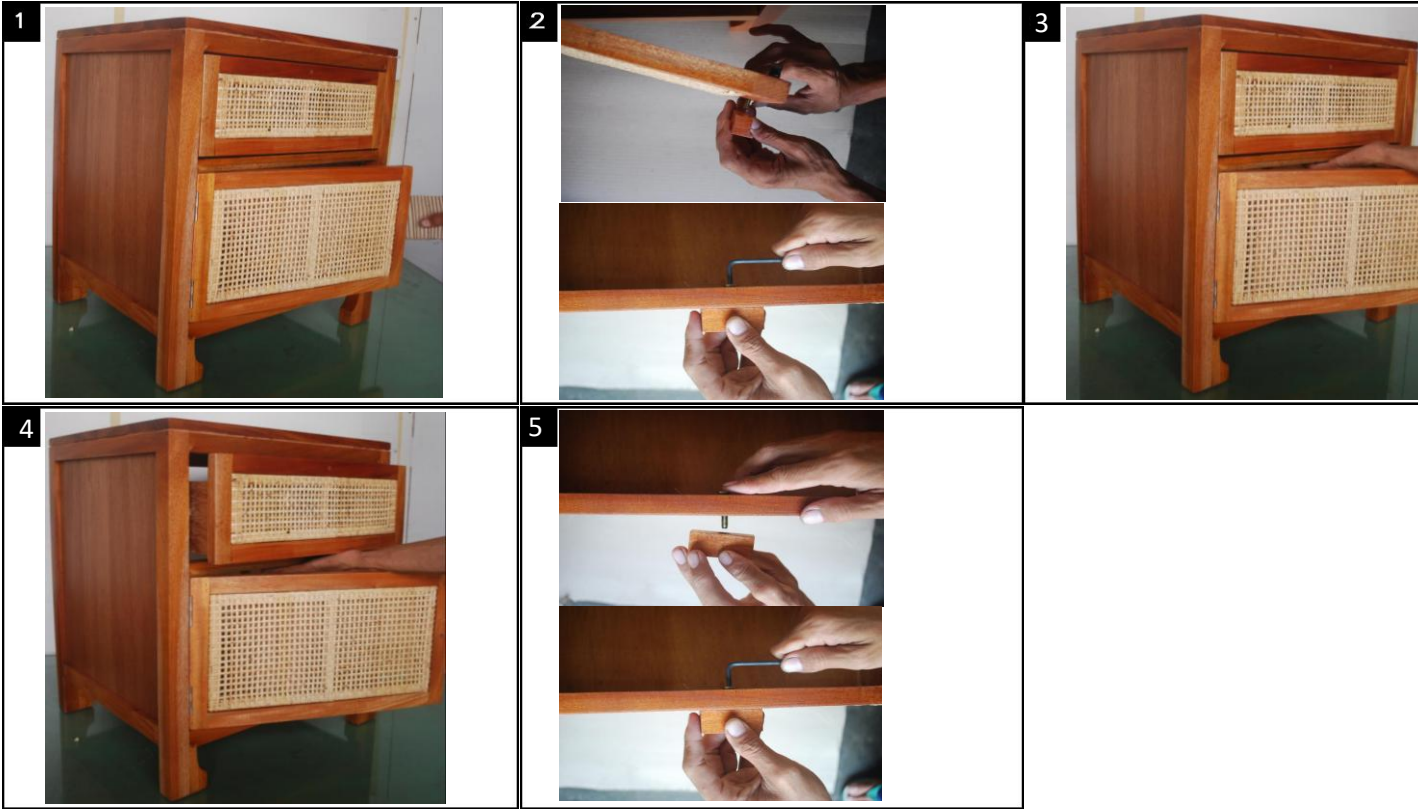


Weight Capacity : 155 lbs
WARNING : DO NOT STAND ON

PREPARATION

Before beginning assembly of product, make sure all parts are present. Compare parts with package content hardware contents list.

If any part is missing or damaged, do not attempt to assemble the product.



- Step 1 : Pull the paper on door
- Step 2 : Insert the bolt from back of door, then handle from the front. Spin the bolt and tighten with L key.
- Step 3 : Place the hand on the bottom of drawer, then pull out the drawer with hand.
- Step 4 : Pull out the drawer with hand.
- Step 5 : Insert the bolt from back of drawer, handle from front. Spin the bolt and tighten with L Key

EH
RE

x 24.4"



TABLE
is list and

