



# MAXTEC

## PRODUCT CATALOG



# Table of Contents

About Maxtec	01
Sensing	03
Analysis	06
Delivery	17
Speciality Products	25
Accessories	29
Discover More	35



# About Maxtec

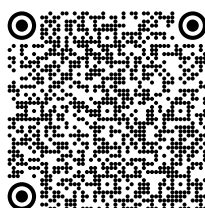
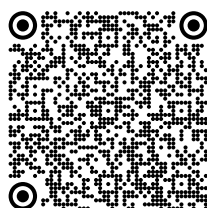


Empowering Clinicians. Enhancing Outcomes.

Since 1991, Maxtec has been a leader in oxygen analysis and delivery products, dedicated to helping clinicians prioritize patient safety and streamline care. Maxtec provides a full line of oxygen blenders, analyzers and sensors—along with neonatal care products, I.V. poles, ventilator support equipment and accessories for complete oxygen delivery set-ups. In 2020, Maxtec partnered with Perma Pure LLC —a leader in moisture control solutions—under a shared mission: **advancing technology to enable a healthier world with every breath.**



MAXTEC CORPORATE HEADQUARTERS SALT LAKE CITY, UTAH



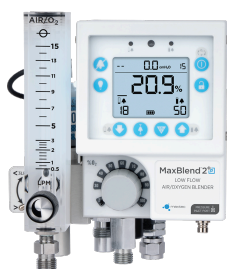
Scan to  
learn more

# Core Products



## Sensing

Customized and crafted with advanced materials, Maxtec oxygen sensors deliver reliable performance and long-lasting durability. They provide essential measurement for ventilators, anesthesia equipment, analyzers and other applications across medical, scuba and industrial settings.



## Analysis

Maxtec's oxygen analysis solutions prioritize patient safety by delivering accurate, reliable readings that enhance outcomes and ensure compliance with critical guidelines. From spot-checks to continuous monitoring, these tools are designed to keep clinicians confidently informed, offering peace of mind and streamlining workflows in fast-paced care environments.



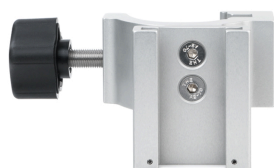
## Delivery

Maxtec's oxygen delivery solutions have supported the highest standards in respiratory care for decades. With a range of options including mixers tailored for high-flow oxygen therapy, standalone blenders, and precision flow meters designed for seamless integration, Maxtec offers clinicians the flexibility to choose what works best for their patients and facility.



## Specialty Products

Maxtec offers a range of solutions to support the most critical hospital environments, including NICUs and PICUs, where specialized care is essential. Offerings include the EyeMax 2 phototherapy protection mask and the patented SmartStack patient care stand—a space-saving solution ideal for hospital departments managing intensive therapies with complex equipment setups.



## Accessories

Maxtec provides everything clinicians need to complete their oxygen delivery set-ups — including the highest quality brackets and mounts for monitors and analyzers, noise-muffling solutions, hoses, and IV pole accessories.



# SENSING

---

# Reliability, Consistency, & Long-Lasting Performance.



Maxtec offers an extensive portfolio of oxygen sensors for use in respiratory devices.

Maxtec oxygen sensors are designed with advanced materials to ensure optimal performance, extend shelf life, and reliable operation.



#### Galvanic Fuel Cell

Stable output for accurate readings



#### Gold Cathode

Prevents lead oxide buildup for longer life



**Hydrophobic membrane + Titanium Mesh**  
Moisture protection



#### Red Oxygen Barrier Tape

Preserves sensor life



*A trusted source  
for consistent  
performance.*



**Learn More About  
Maxtec Oxygen Sensors**

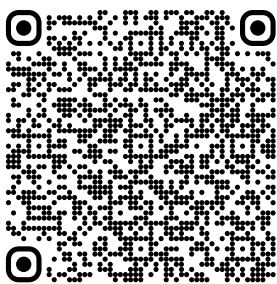
# How can I prolong the life of my oxygen sensors?



- Store sensors upright with the membrane facing down, at room temperature
- Absolute shipping / storage temperature range is -15° to 50° C
- Do not expose sensors to vacuum, high pressure, shock, or vibration
- Do not expose sensors to acidic or organic solvent vapors, chlorine (bleach), ozone, or dust
- Recognize that pressure, temperature, relative humidity, and exposure to oxygen will all effect the useful life of galvanic oxygen sensor



## Looking for more information?



**Scan and Use the Maxtec Sensor Finder Tool** to see which Maxtec sensor is comparable to replace any current non-Maxtec sensors you have been using in your specific application.

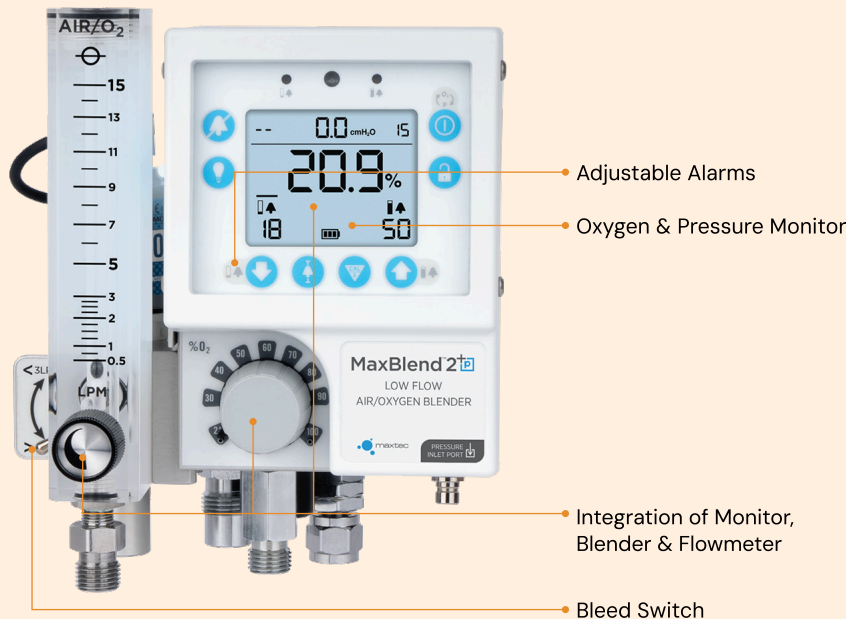
### Maxtec recommends

installing the sensor into the application within 3 months after receipt. Refer to [maxtec.com/warranty-statement](https://maxtec.com/warranty-statement) for more information about sensor warranties.



# ANALYSIS

---



## Blender with Integrated Oxygen & Pressure Monitor

## Setting A New Standard for Respiratory Care

With everything customers love about the original MaxBlend™ 2, the +P model incorporates pressure monitoring to help clinicians stay aware of oxygen and pressure levels and can help protect patients from a range of health risks, including:

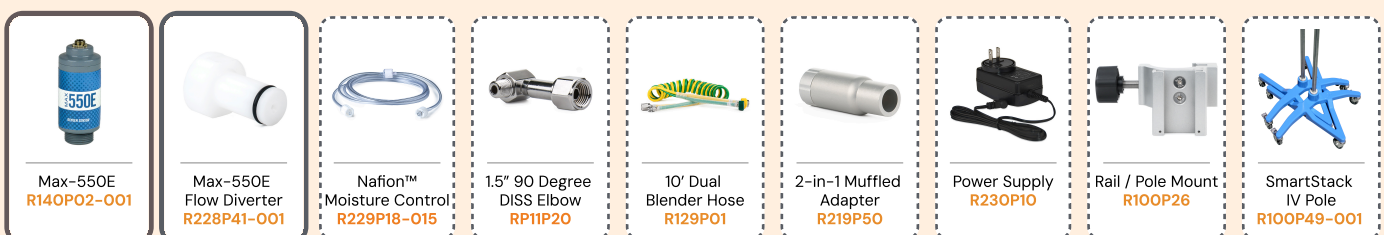
- Oxygen toxicity
- Absorbative atelectasis
- Acute Respiratory Distress Syndrome (ARDS)
- Hypoxia/Hypoxemia
- Damage to vital organs, including the lungs and brain

## PART NUMBERS

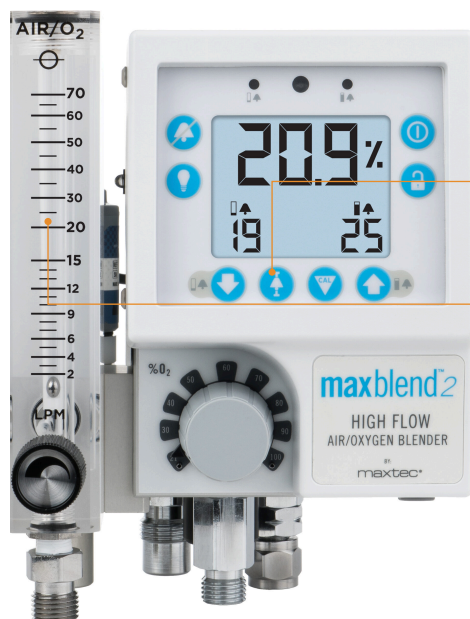
- MaxBlend™2+p, 3 LPM, DISS.....R229P36-001
- MaxBlend™2+p, 15 LPM, DISS.....R229P36-002
- MaxBlend™2+p, 30 LPM, DISS.....R229P36-003
- MaxBlend™2+p, 70 LPM, DISS.....R229P37-001

## SUGGESTED ACCESSORIES

\*Included accessories are marked by a **solid** border.

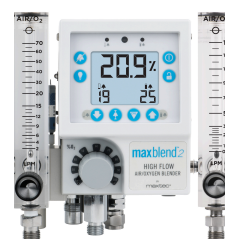


Try the MaxBlend 2+p Virtual Simulator



- Easy-To-Use Smart Alarms
- Dual-Scale DFB Flow Meter & Back Light

*Three-in-one  
blender,  
O<sub>2</sub> monitor,  
and flow meter*



Available with  
Right-Side Dual  
Scale Flow Meter

## Designed From Years of Customer Feedback

The MaxBlend™ 2 integrates a blender, flowmeter, and monitor into a single device. Quick to set up and easy to clean, the MaxBlend™ 2 is equipped with customizable alarms to alert clinicians of changes before care is disrupted. The backlit screen and flowmeter for low light environments keep patient comfort a priority.

- High Flow and Low Flow Models
- ON / OFF Bleed Control
- 15%–99% Alarm Parameters
- Dual Scale Flow Meter
- DC Power Port, for Optional Power Supply
- Smart-Alarms

## PART NUMBERS

- 0–3 LPM Flow Meter, DISS Connector.....**R229P01-011**
- 0–15 LPM Flow Meter, DISS Connector....**R229P01-010**
- 0–30 LPM Flow Meter, DISS Connector..**R229P01-001**
- 0–70 LPM Flow Meter, DISS Connector..**R229P02-001**
- 0–3 LPM Flow Meter, NIST Connector.....**R229P01-030**
- 0–15 LPM Flow Meter, NIST Connector.....**R229P01-027**
- 0–30 LPM Flow Meter, NIST Connector.....**R229P01-004**
- 0–70 LPM Flow Meter, NIST Connector.....**R229P02-004**

## SUGGESTED ACCESSORIES



*\*Included  
accessory is  
marked by a  
solid border.*



**Try our gas savings calculator**



## Oxygen & Pressure Monitor

### Added Protection for the Most Fragile of Patients

The MaxO<sub>2</sub> ME+p continuously monitors FiO<sub>2</sub> and pressure, reducing the risk of alarm fatigue and missed spot checks during Bubble CPAP and other non-invasive oxygen therapies.

- Enable efficiency
- Minimize risk of adverse events
- Adhere to AARC guidelines
- Streamline clinician workflow
- Reduce costs

## PART NUMBERS

- MaxO<sub>2</sub> ME+p Oxygen & Pressure Monitor.....**R230P06**

## SUGGESTED ACCESSORIES

*\*Included accessories are marked by a **solid** border.*



*\*Nafion™ is a trademark of the Chemours Company FC, LLC used under license by Perma Pure, LLC.*



**Try the MaxO<sub>2</sub> ME+p Virtual Simulator**



An oxygen monitor with **adjustable alarms** from 15% to 99%.

## An Easy Integration for Your Existing Set-Up

The MaxO<sub>2</sub> ME is an easy-to-use, low-maintenance monitor with a host of valuable features, including a backlit LCD, smart alarms, DC power port, protective over-mold, built-in kickstand, built-in dovetail, extended battery life, and more.

- Large, backlit LCD
- Smart Alarms – auto set 3% +/- current reading
- Long battery life – up to 5,000 hours on 4 AA
- DC port, for use with optional power supply
- Built-in kickstand and dovetail
- External Max-550 O<sub>2</sub> sensor

## PART NUMBERS

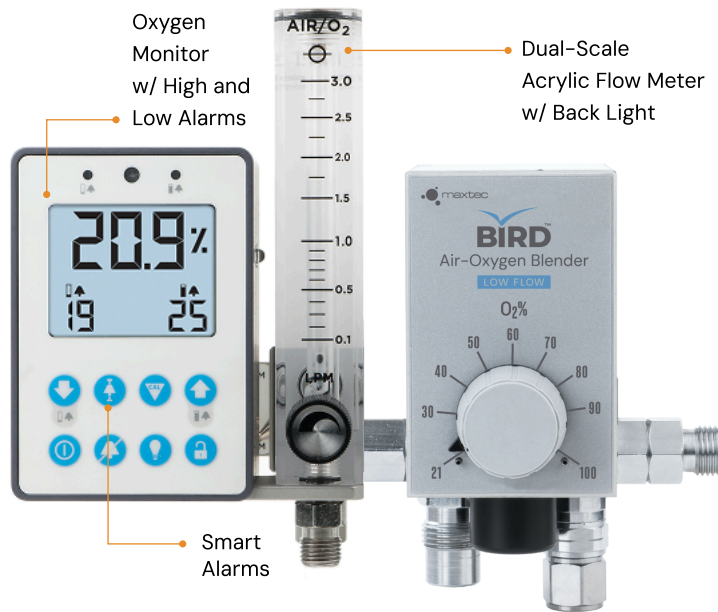
- MaxO<sub>2</sub> ME Oxygen Monitor.....**R230P01**
- MaxO<sub>2</sub> ME International.....**R230P01-001**

## SUGGESTED ACCESSORIES

*\*Included accessories are marked by a solid border.*



# MaxBlend™ Lite



*The  
must-have  
accessory  
for your  
standard  
blender*

## Adding MaxBlend™ 2 Value to Stand-Alone Blenders

When paired with an existing blender, the MaxBlend™ Lite securely attaches to your blender and provides users with the added features of a built-in O<sub>2</sub> monitor with high and low alarms, and a flow meter.

- Available For Most Common Blenders
- High Flow and Low Flow Models
- ON / OFF Bleed Control
- Combine to create a three-in-one blender
- Multiple DFB flow meter configurations
- 15%-99% Alarm Parameters
- DC Power Port, for Optional Power Supply
- Large, backlit LCD

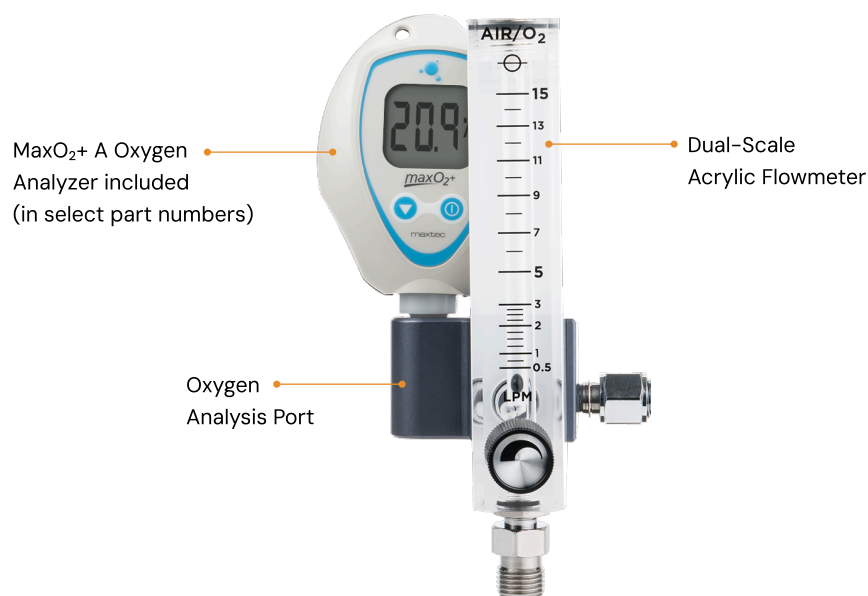
### PART NUMBERS

- Low Flow, MaxBlend™ Lite, 15 LPM....**R229P03-002**
- Low Flow, MaxBlend™ Lite, 30 LPM.....**229P03-003**
- High Flow, MaxBlend™ Lite, 70 LPM..**R229P03-004**

### SUGGESTED ACCESSORIES



*\*Included  
accessorie is  
marked by a  
solid border.*



*A simplified method for oxygen analysis integration*

## Integrated Dual-Scale Flow Meter with Analyzer Port

The BlenderBuddy 2 attaches to a blender to simplify integrating an  $\text{FiO}_2$  analyzer or monitor through a universal DISS outlet port to provide added visibility of the delivered  $\text{FiO}_2$ .

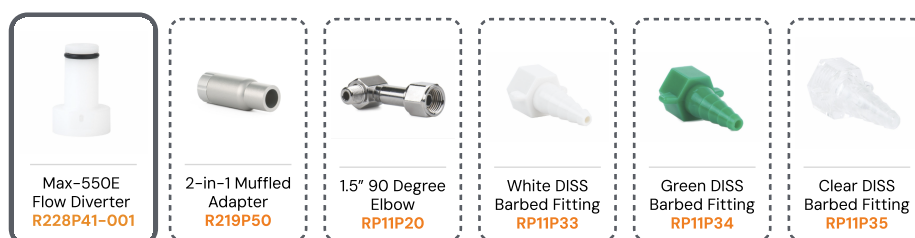
It is equipped with a sample gas analysis port, enabling the placement of an oxygen analyzer to ensure the blender is delivering an accurate mixture.

- Keep oxygen delivery set-up in one place
- Be confident of  $\text{FiO}_2$  levels
- Added accuracy & space-savings with DFB flow meter

## PART NUMBERS

- BlenderBuddy 2, Low Flow, 0-15 LPM (w/ MaxO<sub>2</sub>+ A analyzer).....**R233P04-002**
- BlenderBuddy 2, Low Flow, 0-30 LPM, (w/ MaxO<sub>2</sub>+ A analyzer).....**R233P04-003**
- BlenderBuddy 2, Low Flow, 0-15 LPM (without analyzer).....**R233P01-002**

## SUGGESTED ACCESSORIES



*\*Included accessories are marked by a **solid** border.*



*Patented ergonomic design fits comfortably in your hand*

## *Designed with Simplicity and Portability in Mind*

*This analyzer is ideal for checking oxygen percent accuracy in concentrators or when being paired with a Blender Buddy to verify delivered FiO<sub>2</sub>.*

- Internal Max-250+ Long-Life Sensor
- 5,000+ hours operation on 2 AA batteries
- Easy, one-touch calibration
- Patented ergonomic design fits comfortably in your hand
- Quickly adapts to bore tube applications

## PART NUMBERS

- MaxO<sub>2</sub>+A.....R217P62

## SUGGESTED ACCESSORIES



*\*Included accessories are marked by a **solid** border.*



## A Great Addition for Inline Analyzing

*It is especially useful in conjunction with older ventilators or oscillators.*

- Internal Max-250+ Long-Life Sensor
- 5,000+ hours operation on 2 AA batteries
- Easy one-touch calibration
- Patented ergonomic design fits comfortably in your hand

## PART NUMBERS

- MaxO<sub>2</sub>+AE.....R217P72

## SUGGESTED ACCESSORIES



*\*Included accessories are marked by a **solid** border.*



## An Affordable Spot-Checking Oxygen Analyzer

The simple to use, one-touch calibration button, new overmold and calibration reminder, auto-off, and size make it the best of its class. This analyzer is great for spot-checking  $O_2$  percentage in hospitals, clinics, and in homecare environments.

- New and improved one-touch calibration
- Small, convenient and portable
- Overmold for extra protection
- Auto-off

### PART NUMBERS

- Handi+.....R218P12
- Handi+N<sub>2</sub>.....R218P05

### SUGGESTED ACCESSORIES



*\*Included accessories are marked by a **solid** border.*



## Quickly Verify Concentrator Oxygen, Flow, & Outlet Pressure

Best of all, the UltraMaxO<sub>2</sub> provides unparalleled performance and reliability from its advanced design that includes the following features and operational benefits.

- Accurately measure O<sub>2</sub>, flow & pressure
- No oxygen sensor required
- No in-field calibration
- Shielded, reinforced sample gas inlet port
- Includes silicone case for increased durability
- Self-diagnostics

### PART NUMBERS

- UltraMaxO<sub>2</sub>.....R221P11
- UltraMaxO<sub>2</sub> International.....R221P11-001



# DELIVERY

---



*The original that set the standard for oxygen blenders. Now manufactured by Maxtec.*

## Trusted by Respiratory Care Professionals for Decades

- Accurately delivers FiO<sub>2</sub> mixtures from two outlet ports
- For neonatal, pediatric and adult patient populations
- Can be used with masks, nasal cannulas, resuscitation bags, oxygen hoods, transports and treatments
- Low Flow model (range of 3–30 LPM, 0–30 w/ bleed) – ideal for air, ground and in-house transports as well as infant applications
- High Flow model (range of 2–120 LPM) – ideal for use with ventilators while providing flows to a flowmeter or BlenderBuddy 2

### PART NUMBERS

- Low Flow Bird® MicroBlender, DISS.....O3920A
- High Flow Bird® MicroBlender, DISS – coming soon.....O3800A

## Bird® MicroBlender Maintenance Kit

Essential for biomedical engineers and biomedical service providers, this kit is for service and overhaul of both high and low flow versions of Bird®MicroBlenders, Sentry2 Blenders, as well as most MaxBlend™ 2 Blenders.\*

\*Refer to blender service manual to ensure kit compatibility



### PART NUMBERS

- Bird® MicroBlender Maintenance Kit.....10003
- Blender Maintenance Kit (International).....10003V2



## Air-Oxygen Mixer for High Flow Systems

The MaxVenturi has been specially designed to interface with high flow humidification systems. Using the well established venturi principle, this unit provides users with the ability to mix ambient air and oxygen without the need for piped medical grade air. This is the perfect solution for adult high low therapy in almost any environment.

- Flow & FiO<sub>2</sub> control all in one
- All-in-one O<sub>2</sub>/air mixer
- Mix ambient air and O<sub>2</sub>  
(No medical piped air needed)
- Built-in pole clamp
- Easy to titrate
- Long battery life on analyzer (approx 5,000 hrs)

## ADDITIONAL APPLICATIONS

- High flow therapy for trach patients
- Compatible with common aerosol mask applications
- Alternative conventional mixed gas delivery while moving entrainment away from patient

## PART NUMBERS

- MaxVenturi w/ Pole Mount & DISS Fittings.....**R211P03-020**
- MaxVenturi International w/ Pole Mount & DISS Fittings.....**R211P03-022**
- MaxVenturi w/ Locking Pole Mount & DISS fittings.....**R211P03-024**
- MaxVenturi w/ Locking Pole Mount & NIST fittings.....**R211P03-025**
- MaxVenturi International w/ Locking Pole Mount & DISS fittings.....**R211P03-026**
- MaxVenturi International w/ Locking Pole Mount & NIST fittings.....**R211P03-027**

## SUGGESTED ACCESSORIES



\*Included accessories are marked by a **solid** border.

# MaxFLO<sub>2</sub> Mini



## *An Affordable Air–Oxygen Mixer*

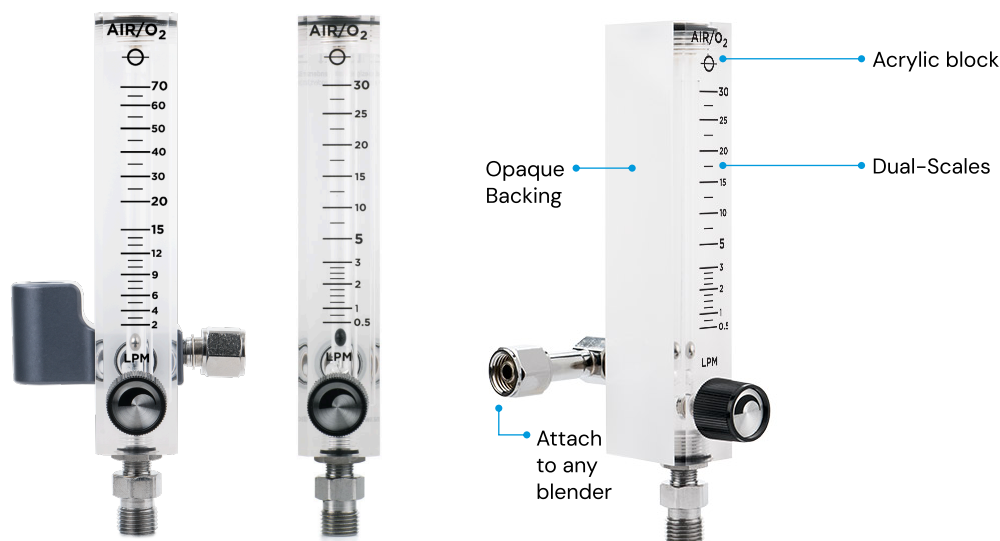
*The MaxFLO<sub>2</sub> Mini is a great alternative flow–driver for heated high flow therapy. Each unit comes equipped with dual flow meters, and a built–in pole mount to easily secure to a 1" pole.*

- Flow & FiO<sub>2</sub> control all in one
- Pole mount included
- DISS outlet with 2–in–1 muffled adapter
- Quiet operation for minimal patient stimulation

## PART NUMBERS

- High Flow MaxFLO<sub>2</sub> Mini.....R223P08

# Designed For Blenders (DFB) Flow Meters



## *Specially Calibrated for Optimal Performance*

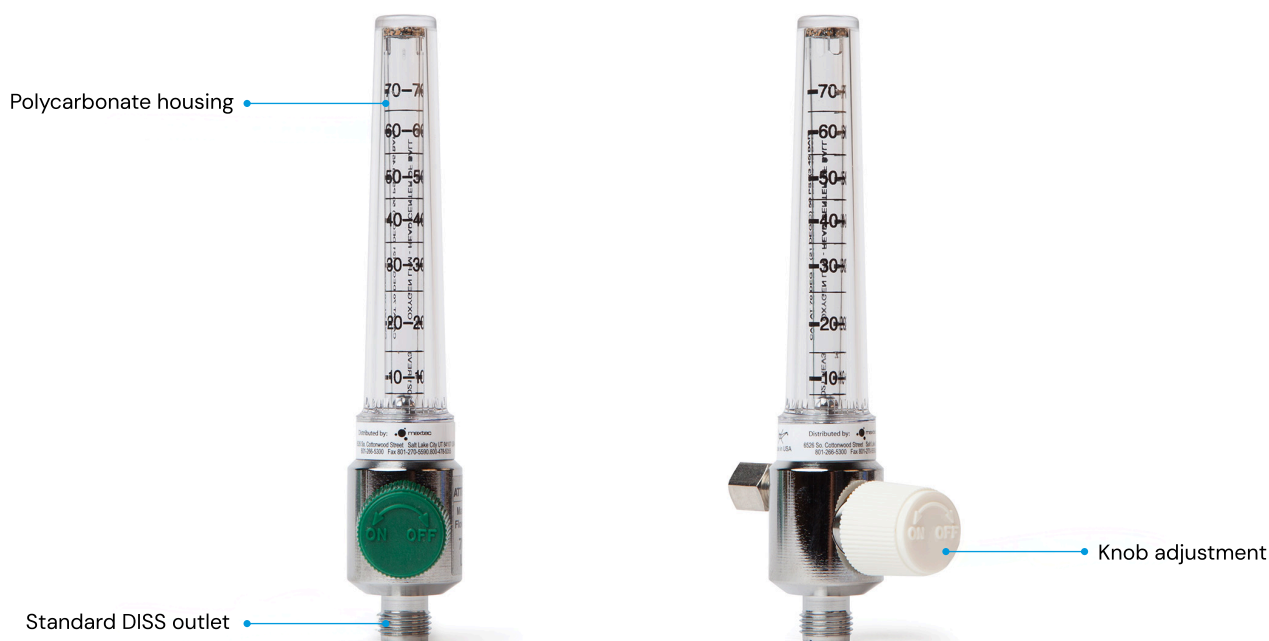
*Our Designed for Blender (DFB) flow meters are calibrated for the pressure drop that is associated with a blender as flow rates are increased. This is especially important for high flow applications.*

*Every DFB flow meter has a dual-scale, which combines 2 flow ranges into 1 flow meter. Our Dual Taper allows accuracy from the lowest visible ranges, to higher flows. This eliminates the need for multiple flow meters attached to a blender, leaving room for more equipment.*

- Designed For Blenders (DFB)
- Standard DISS Outlet
- Tapered Edges
- Two-in-One Flow Range
- Durable, Acrylic Housing
- Standard DISS Outlet

## PART NUMBERS

- DFB Flow Meter, 0-3 LPM w/ Elbow.....**R219P99-400**
- DFB Flow Meter, 0-15 LPM w/ Elbow.....**R219P79-400**
- DFB Flow Meter, 0-30 LPM w/ Elbow.....**R219P88-400**
- DFB Flow Meter, 0-70 LPM w/ Elbow.....**R219P87-400**



## *Durable, Accurate Flow Meter Solutions*

- Durable, polycarbonate housing
- Standard DISS outlet
- Highly accurate needle valve

### PART NUMBERS

- 0 – 15 LPM Flow Meter.....RP34P03-001
- 0 – 1 LPM Flow Meter.....RP34P03-004
- 0 – 70 LPM Flow Meter.....RP34P03-006
- 2 – 26 LPM Flow Meter.....RP34P03-008
- 0 – 8 LPM Flow Meter.....RP34P03-005
- 0 – 5 LPM Flow Meter.....RP34P03-009



## OHMEDA QUICK CONNECTS

- 0 – 15 w/ Ohmeda Quick Connect.....R302P01
- 0 – 70 w/ Ohmeda Quick Connect.....R302P06

## CHEMTRON QUICK CONNECTS

- 0 – 15 w/ Chemtron Quick Connect.....R303P01

## SCHRADER QUICK CONNECTS

- 0 – 5 w/ Schrader Quick Connect.....R305P09
- 2 – 26 w/ Schrader Quick Connect.....R305P08

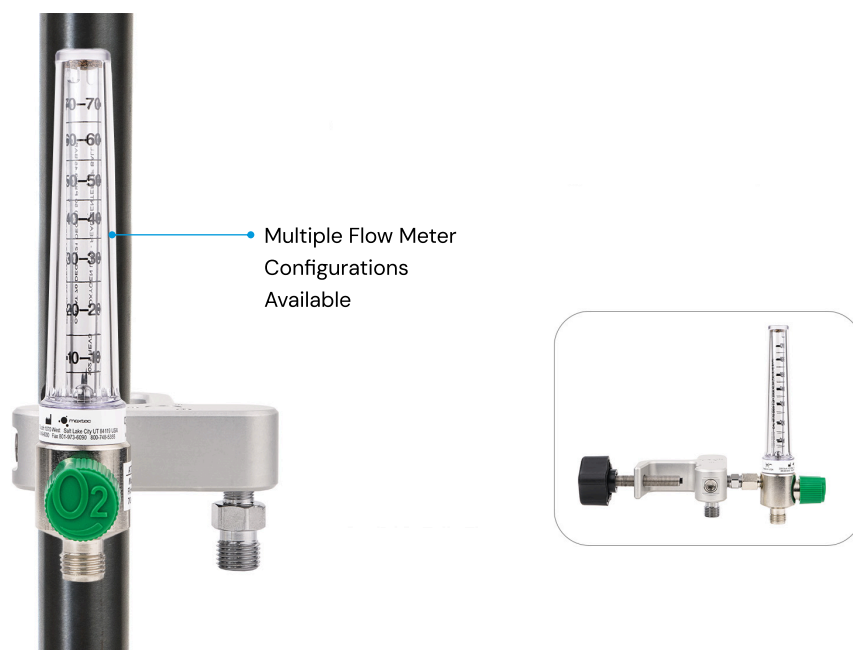
## INTERNATIONAL (WHITE KNOBS)

- 0 – 15 w/ White Knob.....RP34P03-101
- 0 – 70 w/ White Knob.....RP34P03-106
- 2 – 26 w/ White Knob.....RP34P03-108
- 0 – 15 w/ White Knob 60psi.....RP34P03-111
- 0 – 8 w/ White Knob.....RP34P03-105
- 0 – 5 w/ White Knob.....RP34P03-109
- 0 – 70 w/ White Knob 60psi.....RP34P03-116

## DISS HAND TIGHT FITTINGS

- 0 – 15 w/ DISS Hand Tight Fittings.....R306P01
- 0 – 70 w/ DISS Hand Tight.....R306P05
- 0 – 3.5 w/ DISS Hand Tight Fittings.....R306P02
- 2 – 26 w/ DISS Hand Tight Fittings.....R306P06

# O<sub>2</sub> Flow Meter Manifold



## *Quickly and Easily Mount Flow Meter to IV Pole*

*Every flow meter features a durable housing, a highly accurate needle valve.  
Each flow range is also available in an option for ISO colors (white).*

- Quickly mount flowmeters with ease
- Highly accurate needle valve
- Durable, acrylic housing
- ISO colored flow control knobs available

### PART NUMBERS

- IV Pole Manifold, NIST, 0-70LPM.....R220P01-111
- IV Pole Manifold, AUST, 0-70LPM.....R220P01-109
- IV Pole Manifold, NIST, 0-30LPM.....R220P07-003



**Scan for Additional Part Numbers**



# SPECIALITY PRODUCTS

---

# SmartStack Patient Care Stand



## Patented, Space-Saving Nesting Design

Our specially designed 24" pole base is two inches wider and nearly 5 pounds heavier, providing extra stand support and durability. It's patented design will stack neatly with other bases of it's kind (22" and 24"), allowing for extra storage space, a more organized facility and easy transportation of multiple stands all at once.

- Patented stacking design
- Includes 4 fixed Ram-horn hooks
- 100 lbs max load capacity
- Large, 3" smooth rolling casters with 2 wheel locks

## PART NUMBERS

- SmartStack Single-Pack.....R100P49-001
- SmartStack with IV Pole Basket.....R100P49-006

## SUGGESTED ACCESSORIES



\*Included accessories are marked by a **solid** border.

# SmartStack Universal Equipment Stand



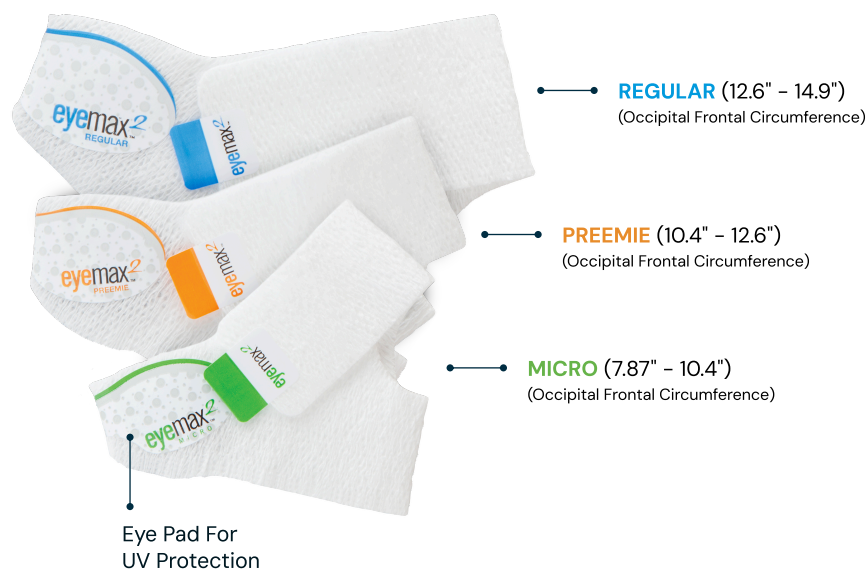
## Nesting Stand With a Convenient Universal Mounting Plate

The SmartStack Universal Equipment Stand has a universal mounting plate to accommodate most CPAP and SiPAP units. Its specially-designed aluminum base provides extra support and durability and its patented interlocking design nests neatly with other SmartStack bases for ease of portability and storage.

- Patented stacking design
- Large, smooth rolling casters with 2 wheel locks
- Includes basket for additional storage
- Heavy duty aluminum mounting plate

### PART NUMBERS

- SmartStack Stand w/ Universal Plate.....R100P86
- SmartStack Stand for Devilbiss.....R100P74
- SmartStack Stand for Respirationics.....R100P73



## Provides Optimal Comfort and Protection During Phototherapy Treatment.

The latex-free EyeMax 2 has a one-piece, wraparound design with two attachment points that can be adjusted independently; this both prevents unwanted movement and allows for a perfect fit. The special eye-protection pad was ergonomically designed to prevent light leakage.

- Easy-to-use design
- Adjustable band for a perfect fits
- Latex-Free
- Bigger eye pad for less pressure and better protection

### PART NUMBERS

- EyeMax 2 Regular.....R300P01
- EyeMax 2 Premie.....R300P02
- EyeMax 2 Micro.....R300P03



# ACCESSORIES

---

# 3-in-1 Adapter



## Conveniently Connects With Multiple Tubing Sizes

*It provides the user with the option to connect 22mm Large Bore, 15mm or 1/4" Cannula tubing to a device or outlet with a DISS fitting. A 2-in-1 style is available for High Flow applications (22mm and 15mm connection only).*

- Up to three connections in a single reusable connector
- Connects Large Bore (22mm), Small Bore (15mm) & 1/4" Cannula to any DISS fitting
- 2-in-1 option for High Flow applications available (22mm & 15mm)
- Made from machined aluminum

### PART NUMBERS

- 3-in-1 Single Pack.....R219P31
- 2-in-1 Single Pack.....R219P32

# 2-in-1 Muffled Adapter



*Dampens noise  
minimizing patient  
stimulation during use.*

## Noise Muffling Solution for Added Patient Comfort

*It provides users with the option to connect 22mm large bore or 15mm small bore tubing to any device with a male DISS fitting such as common flow meters.*

- Connects Large Bore (22mm) and Small Bore (15mm) tubing to any DISS fitting
- Dampens noise minimizing patient stimulation during use
- Specially designed for High Flow applications

### PART NUMBERS

- 2-in-1 Muffled Single (1) Pack.....R219P50-100

# Coiled Air/O<sub>2</sub> Hoses



*High-grade polyurethane material, keep the work space clean & tidy*



## Unique Oxygen and Self-Coiling Hose Solutions

*They are available in both single and dual coils with blender, ventilator or DISS fittings as well as quick connect fitting options.*

- Easy to move with equipment
- Self coiling prevents touching the ground
- DISS fittings (handtight & hextight)

### PART NUMBERS

- 15' Single Coiled O<sub>2</sub> Hose.....R127P35
- 15' Single Coiled Air Hose.....R128P34
- 10' Dual Blender Hose (DISS).....R129P01
- 15' Dual Vent Hose (DISS female).....R129P02
- 10' Dual Vent Hose (DISS female).....R129P02-001
- 10' Dual Vent Hose (Ohmeda Quick Connects).....R129P13
- 10' MaxFLO2 Dual Air & O<sub>2</sub> Hose (DISS Right Angle).....R129P16



OHMEDA  
Quick Connect

## WITH OHMEDA QUICK-CONNECT FITTINGS

- 10' Dual Coiled Hose w/ Ohmeda QC (Blender Hose).....R129P17



CHEMTRON  
Quick Connect

## WITH CHEMTRON QUICK-CONNECT FITTINGS

- 10' Dual Coiled Hose w/ Chemtron QC (Blender Hose).....R129P25



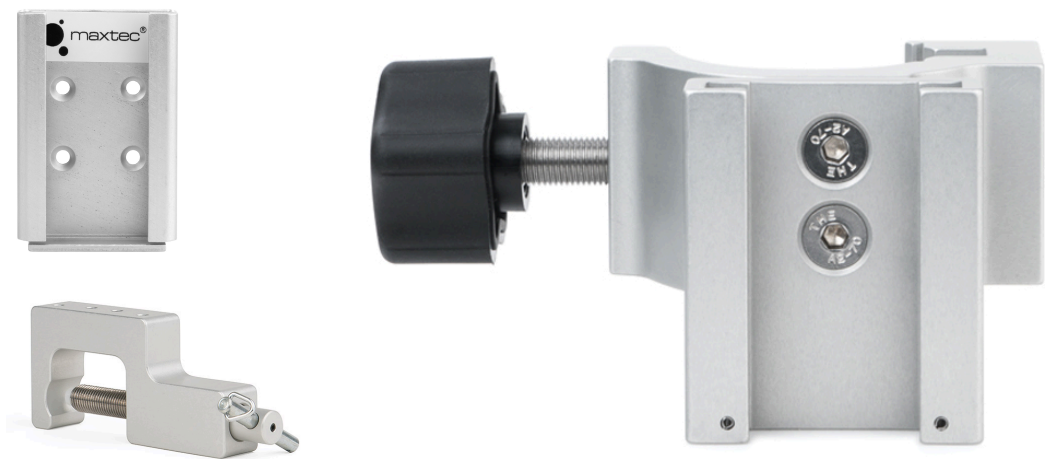
PURITAN  
Quick Connect

## WITH PURITAN QUICK-CONNECT FITTINGS


- 10' Dual Coiled Hose w/ Puritan QC (Blender Hose).....R129P26



## Dependable and Durable Aluminum Brackets



### Bracket Part Numbers

 ANALYZER WALL MOUNT R205P86	 MAXO2+ DOVETAIL R217P23	 ANALYZER POLE MOUNT R206P75	 ANALYZER RAIL MOUNT R100P10	 BLENDER WALL MOUNT (SMALL) RP05P07	 BLENDER WALL MOUNT (LARGE) RP05P09	 BLENDER POLE/RAIL MOUNT R100P26	 BLENDER ADJUSTABLE POLE MOUNT R100P22
 LOCKING POLE CLAMP R100P41	 AEROGEN WALL MOUNT R100P66	 AEROGEN RAIL MOUNT R100P68	 HUMIDIFIER POLE/RAIL MOUNT R100P44	 TRIPP LITE BRACKET R100P63-001			



**DISCOVER MORE**

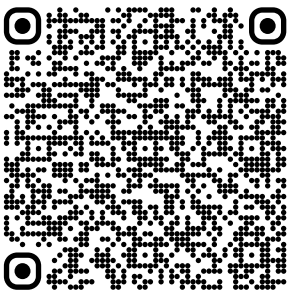
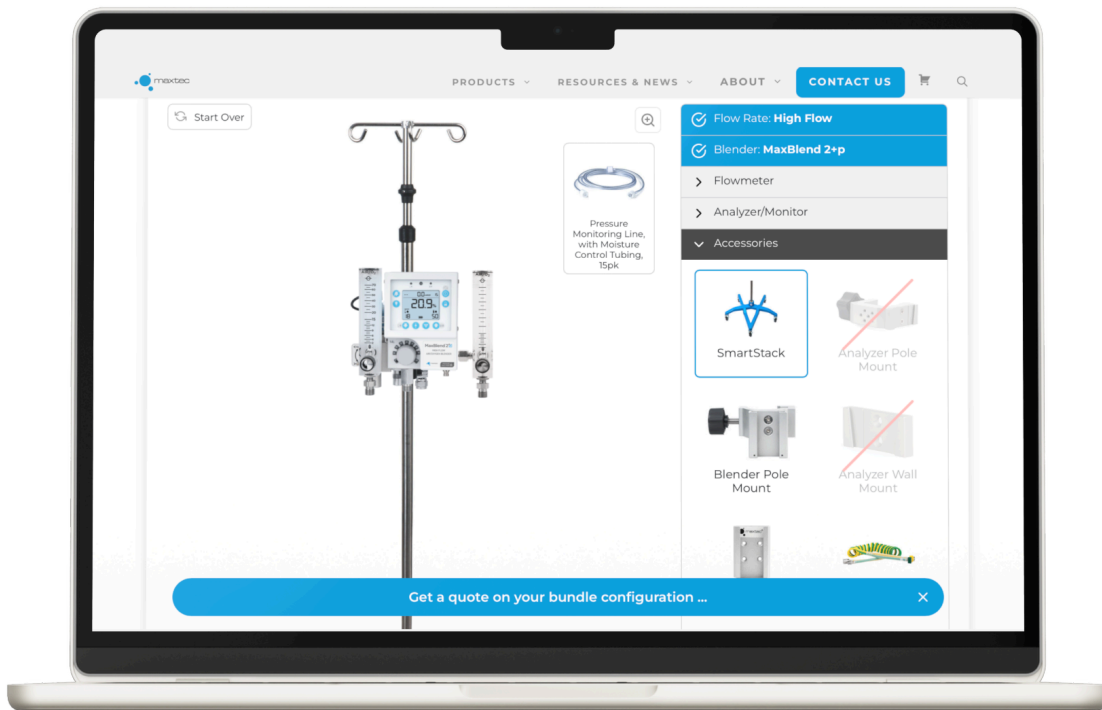
---

# Explore Our Interactive Solution Builder Tool



## Customize Your O<sub>2</sub> Delivery Set-Up

Explore our interactive Custom Solution Builder—your personalized tool to build and view complete oxygen delivery solutions tailored to your needs. Whether you're optimizing for integration, portability, or simply wish to explore Maxtec's offerings, this tool helps you visualize and configure the full range of Maxtec products to create the ideal setup for your needs.



**Scan the QR code to start building your custom solution.**

# Warranty Statement



## Oxygen Analyzers

The Maxtec analyzer is designed for oxygen delivery equipment and systems. Under normal operating conditions, Maxtec will warrant the unit to be free from defects of workmanship or materials for a period of two- (2) years from the date of receipt provided that the analyzer is properly operated and maintained in accordance with Maxtec's operating instructions. Based on Maxtec's product evaluation, Maxtec's sole obligation under the foregoing warranty is limited to making replacements, repairs or issuing credit for equipment found to be defective within the stated warranty period. Should the analyzer fail prematurely, the replacement analyzer is warranted for the remainder of the original analyzer warranty period. This warranty extends only to the buyer purchasing the equipment directly from Maxtec or through Maxtec's designated distributors and/or agents as new equipment.

## Oxygen Sensors

Maxtec warrants the MAX-250 oxygen sensor to be free from defects in material and workmanship calculated from the date of product receipt by the customer, provided that: a) the product is operated and maintained in accordance with Maxtec's operating instructions and, b) If otherwise stated the lessor period applies and, c) unless an alternative period is declared within a mutually agreed upon Supply & Quality Agreement.

All other Maxtec Sensors are warranted to be free from defects in material and workmanship for a period of two- (2) years from the date of dispatch, provided that: a) the product is operated and maintained in accordance with Maxtec's operating instructions and, b) If otherwise stated the lessor period applies and, c) unless an alternative period is declared within a mutually agreed upon Supply & Quality Agreement.

Based on Maxtec's product evaluation, Maxtec's sole obligation under the foregoing warranty is limited to making replacements or issuing credit for sensors found to be defective. Should a sensor fail prematurely, the replacement sensor is warranted for the remainder of the original sensor warranty period.

## Other Products

Other Maxtec products are warranted to be free from defects in material and workmanship for a period of two- (2) years from the date of dispatch, provided that: a) the product is operated and maintained in accordance with Maxtec's operating instructions and, b) If otherwise stated the lessor period applies and, c) unless an alternative period is declared within a mutually agreed upon Supply & Quality Agreement. Based on Maxtec's product evaluation, Maxtec's sole obligation under the foregoing warranty is limited to making replacements, repairs or issuing credit for equipment found to be defective, at our sole discretion. Should the product fail prematurely, the replacement product is warranted for the remainder of the original warranty period.

Routine maintenance items are excluded from this warranty. Maxtec shall not be liable to the purchaser or other persons for incidental or consequential damages or equipment that has been subject to abuse, misuse, misapplication, alteration, negligence or accident.

*These warranties are exclusive and in lieu of all other warranties, expressed or implied, including warranty of merchantability and fitness for a particular purpose.*



**Visit us online:**

