

FDK VOICE DIGITAL THERMOMETER

INSTRUCTIONS

LS&S, LLC
145 River Rock Dr
Buffalo, NY 14207-2172

Intended Use

Digital Thermometer, Model No. BT-A41CN is intended for monitoring human body temperature by physician or consumers in hospital or home at all ages available.


Operation for model BT-A41CN:

1. When the thermometer is ready to measure the temperature, you will hear audio announcement 'Please measure'.
2. When the measurement is complete, you will hear the audio announcement for the measured result.
3. Press blue audio button again, the latest temperature measurement will be announced & display on the LCD screen.


What is a " Normal " temperature?

Although the generally accepted "normal" temperature reading is 37.0°C /98.6°F, temperature readings can vary from 36.1°C/97.0°F to 37.2°C /99.0°F and still may be considered "normal". Variations in temperature can be attributed to activities such as exercise, smoking, eating and drinking. Your temperature is lower in the morning than in the afternoon. Other variations may be due to the location of the temperature reading. While the oral temperature follows the guidelines previously described, a rectal temperature is generally 0.5°C /1.0°F higher. Conversely, an axillary (under the arm) temperature will be 0.5°C /1.0°F lower.

How to switch audio option to mute condition?

- (1) Power off the thermometer
- (2) Click on the big green '  ' button; don't remove your finger until you see 'ON' or 'OFF' to display on the screen and then you can remove your finger from the button and quickly click on the green button again to switch. (Reminder: This may take you 4 ~ 5 seconds to see 'ON' or 'OFF' icon to display on the screen for you to switch.

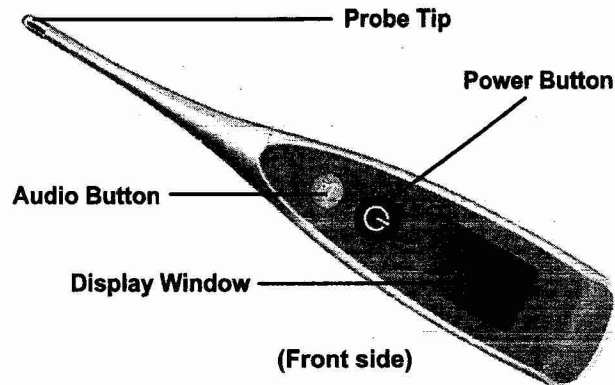
How to switch option from 'SPANISH' to 'ENGLISH'?

- (1) Power off the thermometer
- (2) Click on the big green '  ' button; don't remove your finger until you see 'US' or 'ES' to display on the screen and then you can remove your finger from the button and quickly click on the green button again to switch. (Reminder: This may take you about 10 seconds to see 'US' or 'ES' icon to display on the screen for you to switch.)

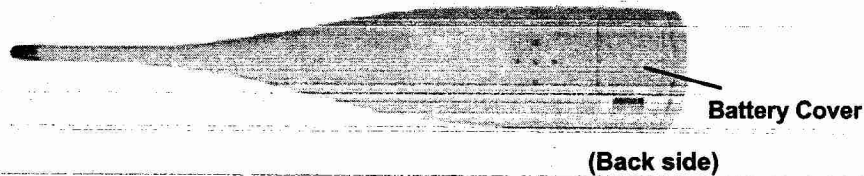
How to switch Fahrenheit degree to Celsius degree?

- (1) Power off the thermometer.
- (2) Click on the big green 'C' button; don't remove your finger until you see 'F' or 'C' to display on the screen and then you can remove your finger from the button and quickly click on the green button again to switch (Remember: This may take you about 15 seconds to see 'F' or 'C' icon to display on the screen for you to switch.)

Features of your digital thermometer



BT-A41CN



How to take your temperature

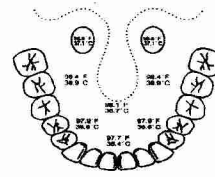
1. Press **ON** button to activate. The unit would beep and display **100.0°C** (or **100.0°F**) for around 2 seconds.
2. 37.0°C (or 98.6°F) will display after the latest measured temperature is displayed with a "M" icon at the bottom of right corner.
4. When **Lo** and flashing °C (°F) displays, the thermometer is ready for measurement. But if the room temperature is higher than 32.0°C (89.6°F), the room temperature would be displayed instead of **Lo**.
5. Beep sound alerts when measurement is complete.
6. Press **ON** button to turn off the thermometer.
(The thermometer will automatically power off in ten minutes if the thermometer is not in use.)

Taking an Oral temperature

Place the probe tip under the tongue and keep it near to the heat pocket as close as possible.

Approximate measuring time: 8 seconds.

Suggestion: Close your mouth at least 2 minutes before taking temperature.



Taking a Rectal temperature

Apply a water soluble lubricant to the probe cover. Gently insert the probe (MAXIMUM 1/2") into the rectum.

Approximate time for measurement: 10-30 seconds

Note: Rectal temperatures are generally 0.5°C /1.0°F higher than oral readings.

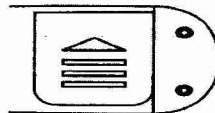
Replacing the battery

The battery in your digital thermometer needs to be replaced when you see the icon "⚡" appears at the bottom of right corner to display. Replace the battery with a 1.55V, LR41 alkaline or SR41 silver oxide type or equivalent.



To replace the battery,

1. Remove the battery cover from the back of the thermometer.
2. Remove the plastic security chip from battery compartment.
3. Use a non-metal pointed tool to remove the battery
5. Place battery cover back after the three new LR41 batteries have been replaced.



Battery cover



Battery compartment for 3 batteries

Note: Please properly replace the battery away from small children and heat.

Specifications

Measurement range	32.0°C (89.6°F)~ 42.9°C (109.2°F)
Low temperature display	Temperature<32.0°C (89.6°F): display: Lo°C (Lo°F)
High temperature display	Temperature>42.9°C (109.2°F): display: Hi°C (Hi°F)
Display resolution	0.1°C (0.1°F)
Accuracy	35.0°C(95.0°F)~39.0°C(102.2°F) ±0.1°C(0.2°F) other range: ±0.2°C(0.3°F)
Fever beep Sound (> 37.8°C (100.0°F))	short beep sounds in 10 seconds
Normal beep sound (≤ 37.8°C (100.0°F))	long beep sounds in 10 seconds
Auto power off	8minutes ± 2minutes
Battery	LR41 or SR41
Life of battery	Approximately 2 years
Operating condition	Temperature: 10°C ~40°C (50.0°F to 104.0°F) Humidity: 30%~85%RH
Storage condition	Temperature: -10°C ~60°C (14.0°F to 140.0°F) Humidity: 25%~90%RH
Weight	0.69 ounces (19.5 grams)

Cleaning instructions

Each time, before or after using the thermometer, please clean it with a soft cloth that has Isopropyl rubbing alcohol diluted with water or wash it with cold soap water. The thermometer can not be submersed into water or alcohol. Do not soak or sterilize by boiling, gas or steam autoclaves method.

Solution	Dilution with water	Method
Ethanol	70-80%	Wipe the probe with the soaked cloth.
Isopropyl Alcohol	70-90%	As above.
Glutaraldehyed	0.5-2%	Soak the probe into the solution for 30s.

Precautions:

- 1.The thermometer should only be used under the supervision of an adult. Please keep it out of children.
- 2.Do not walk, run or talk while taking temperature.
- 3.Store the thermometer in the protective case when not in use.
- 4.Do not keep the thermometer directly exposed in sunshine or any environment with dust, humidity or extreme temperature.
- 5.Dropping or subjecting your thermometer with strong shocks should be avoided.
- 6.Do not attempt to disassemble the thermometer, except replacing the battery.