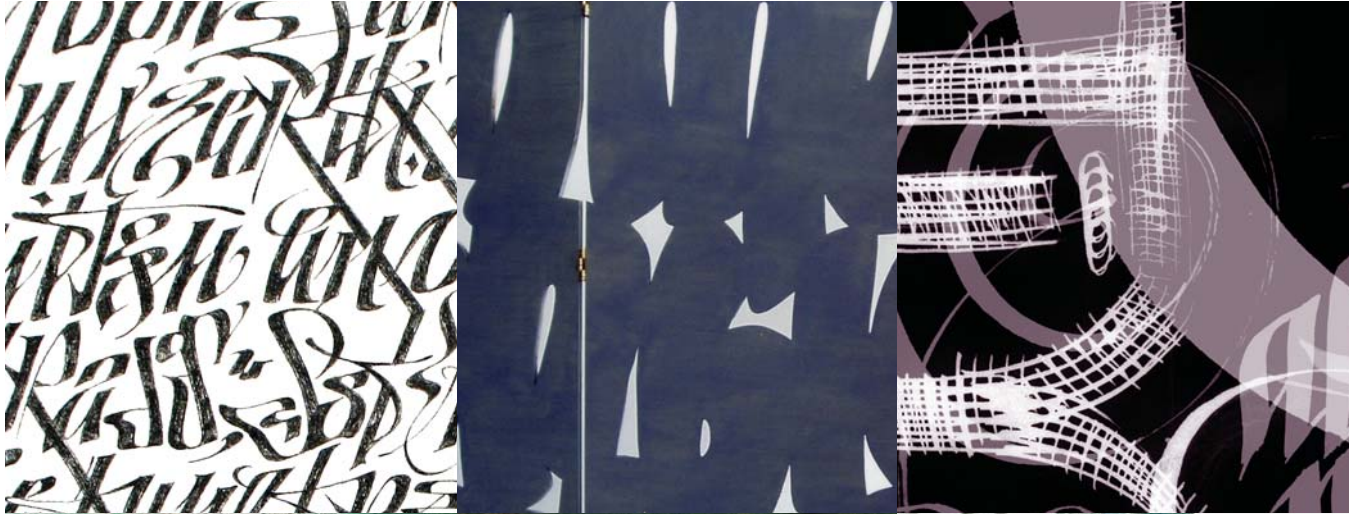


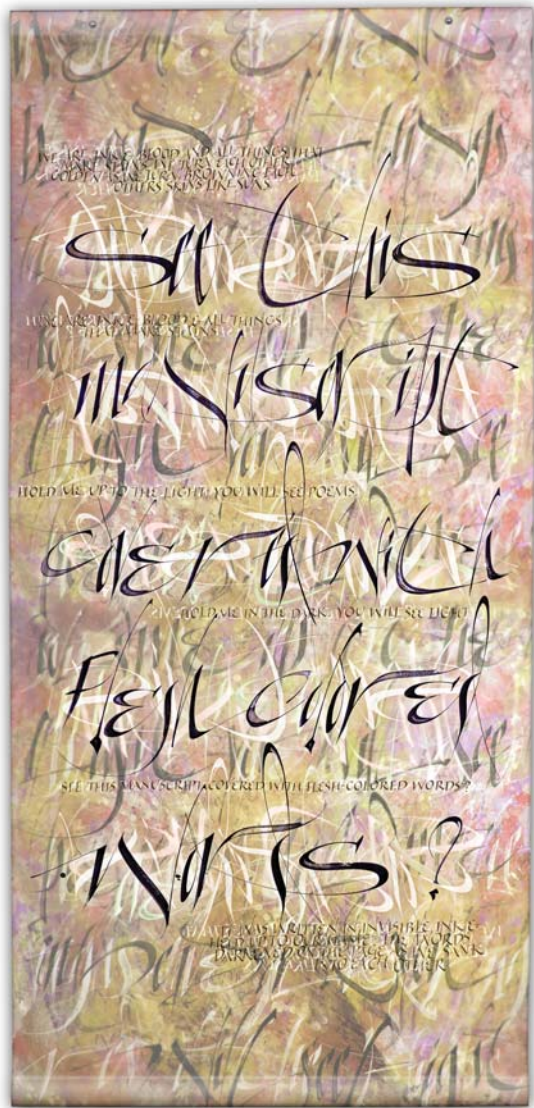
THE ANNUAL JURIED ISSUE

# Letter Arts Review



0 2 >  
0 74470 57397 5  
\$17.50





< One of the hangings.      ^ Detail of another hanging.

Denis Brown, Ireland    v

4 Wall Hangings

Set of four panels

Calligraphy on both sides of translucent polyester film  
hanging loosely over painted background papers with  
more layers of calligraphy.

Each panel: 7'2" x 3'3"

Part of a portfolio of large-scale calligraphy art pieces  
in a range of styles.





PARK BENTAMIN

Flowers are Love's truest language;

FLOWERS HAVE AN EXPRESSION OF COUNTENANCE AS MUCH AS MEN OR

they betray like the divining rods of Magi old

ANIMALS SOME SEEM TO SMILE; SOME HAVE A SAD EXPRESSION; SOME ARE PENSIVE

where precious wealth lies buried not of gold

AND DIFFIDENT; OTHERS AGAIN ARE PLAIN HONEST AND UPRIGHT LIKE THE BROAD-

but Love-Strong love that never can decay!

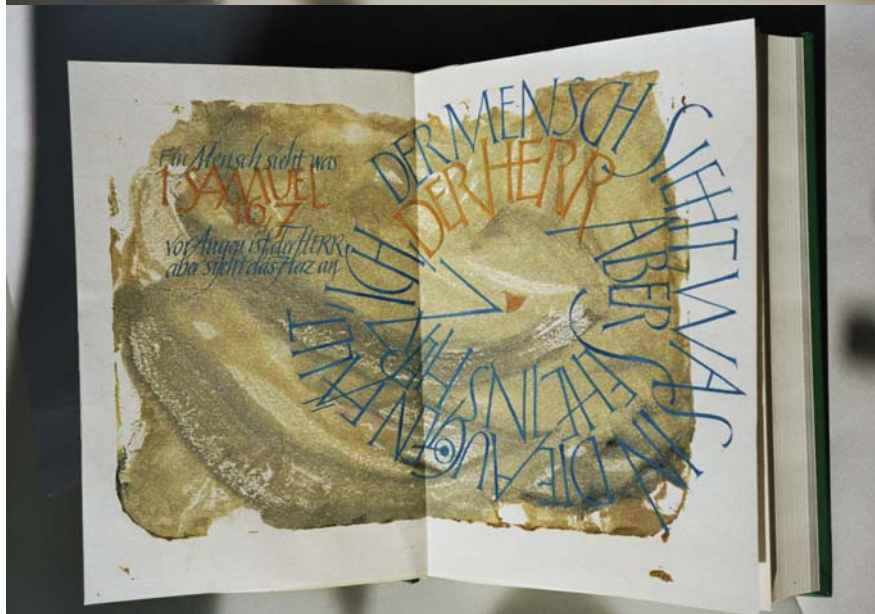
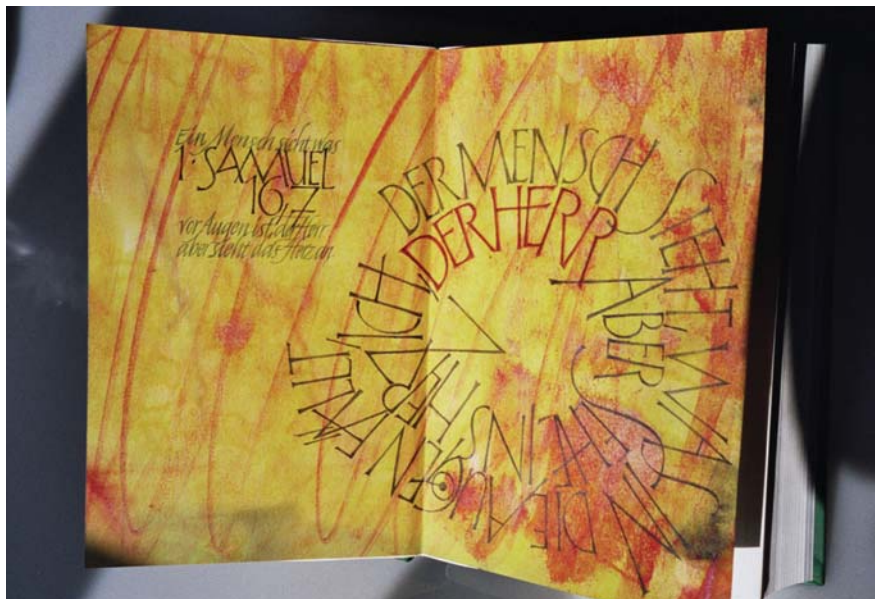
FACED SUNFLOWERS AND THE HOLLYHOCK... HENRY WARD BEECHER

^ Marcy Robinson, New Jersey  
 Flowers  
 Panel  
 Sumi ink on Arches Text Wove paper.  
 8.5 x 13 inches.  
 This is a new version of a piece I did  
 originally in 1987.

>

Ina Rodenburg, the Netherlands  
 Niets hoeft te blijven zoals het is  
 Relief panel  
 Hard plywood.  
 42 x 42 x 2.5 centimeters.  
 The text reads: Nothing needs to stay as it is.





<  
 Elisabet Wiederkehr, Switzerland  
 Der Mensch Sieht  
 Calligraphy tipped into printed books  
 Watercolor on paper.  
 21.5 x 28 centimeters.

These three pieces were commissioned by a church. Each piece was executed on paper, which was then folded and glued into a printed Bible to form an opening spread.