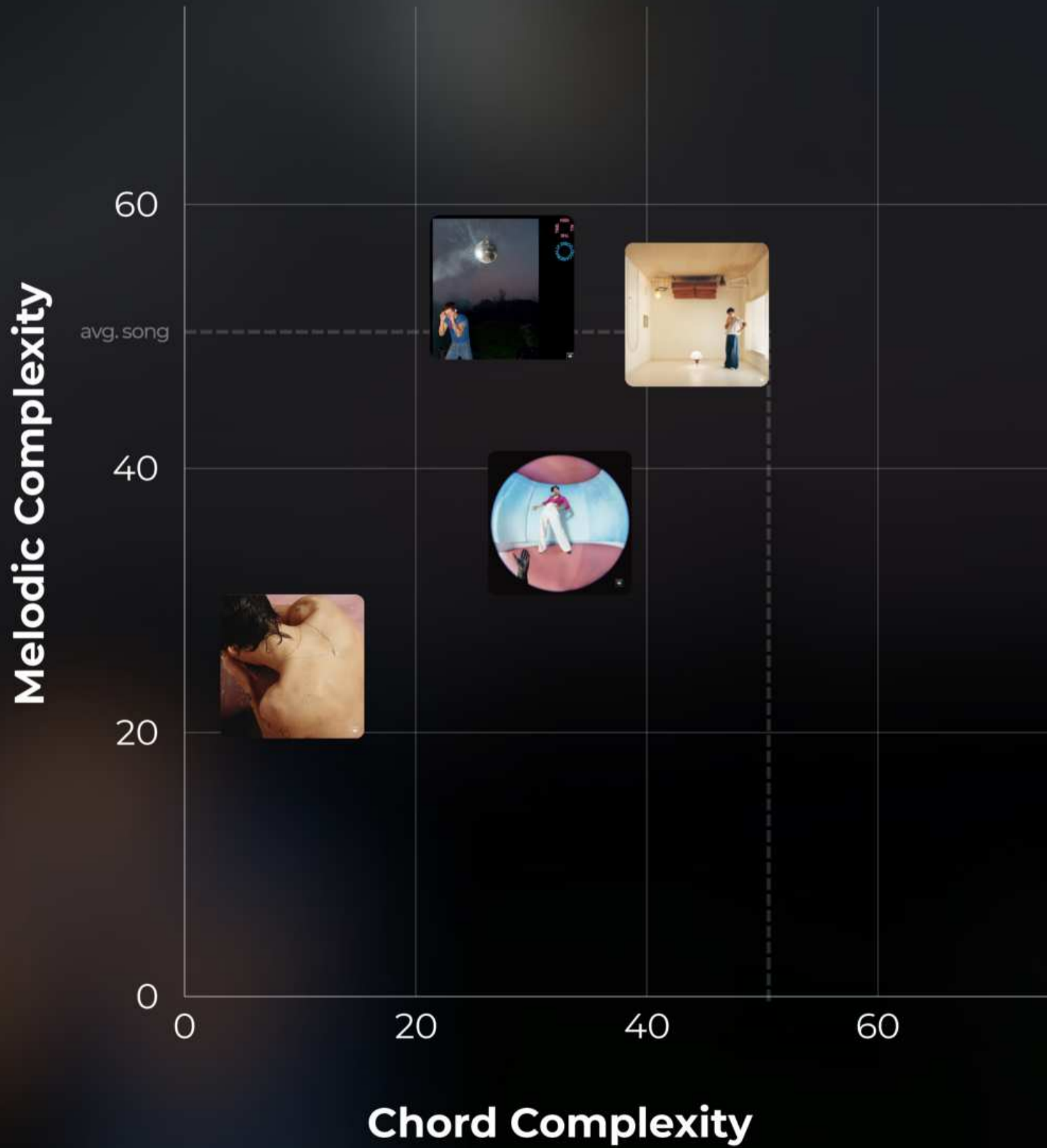


Harry Styles

# Songwriting Stats



# Complexity Comparison



# Album Tempo Comparison

140

120

100

80

60

40

20

0



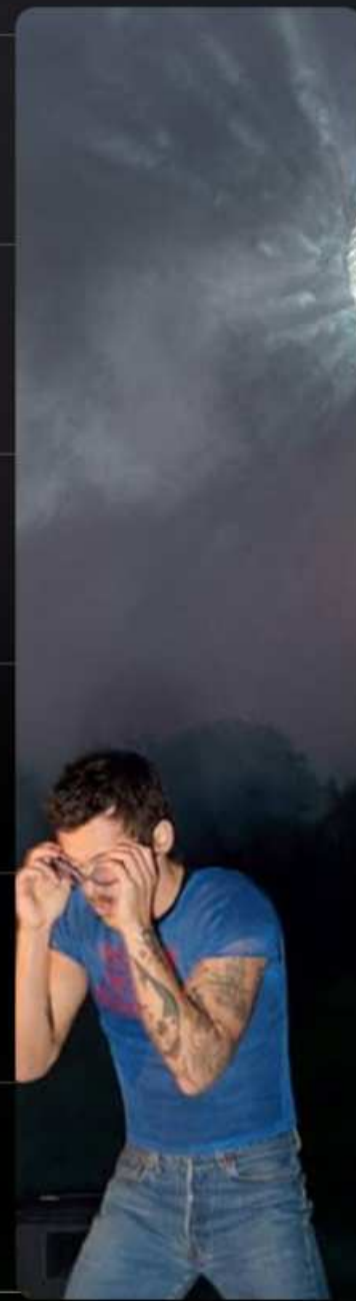
Harry Styles



Fine Line



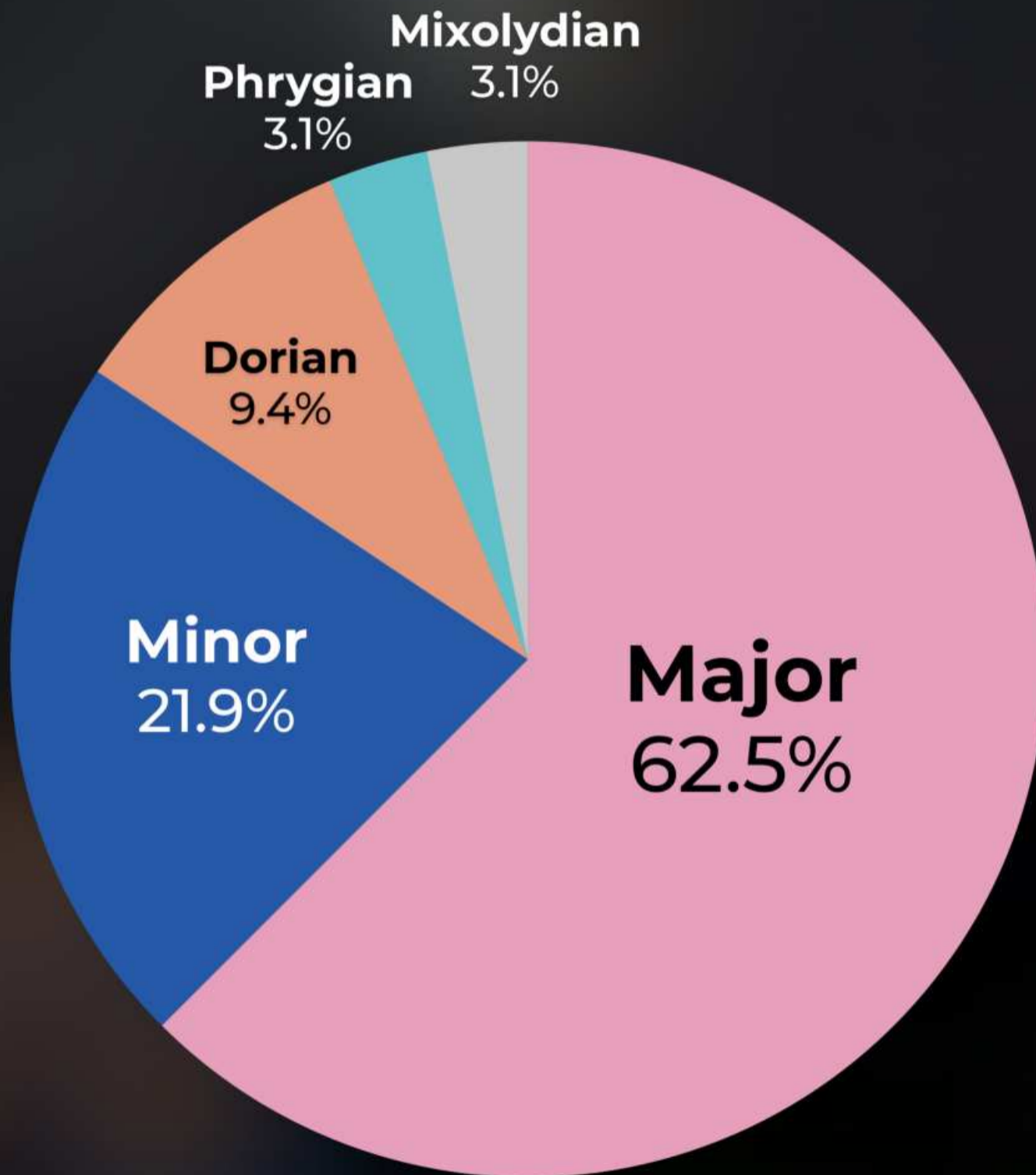
Harry's House



Kiss All the Time

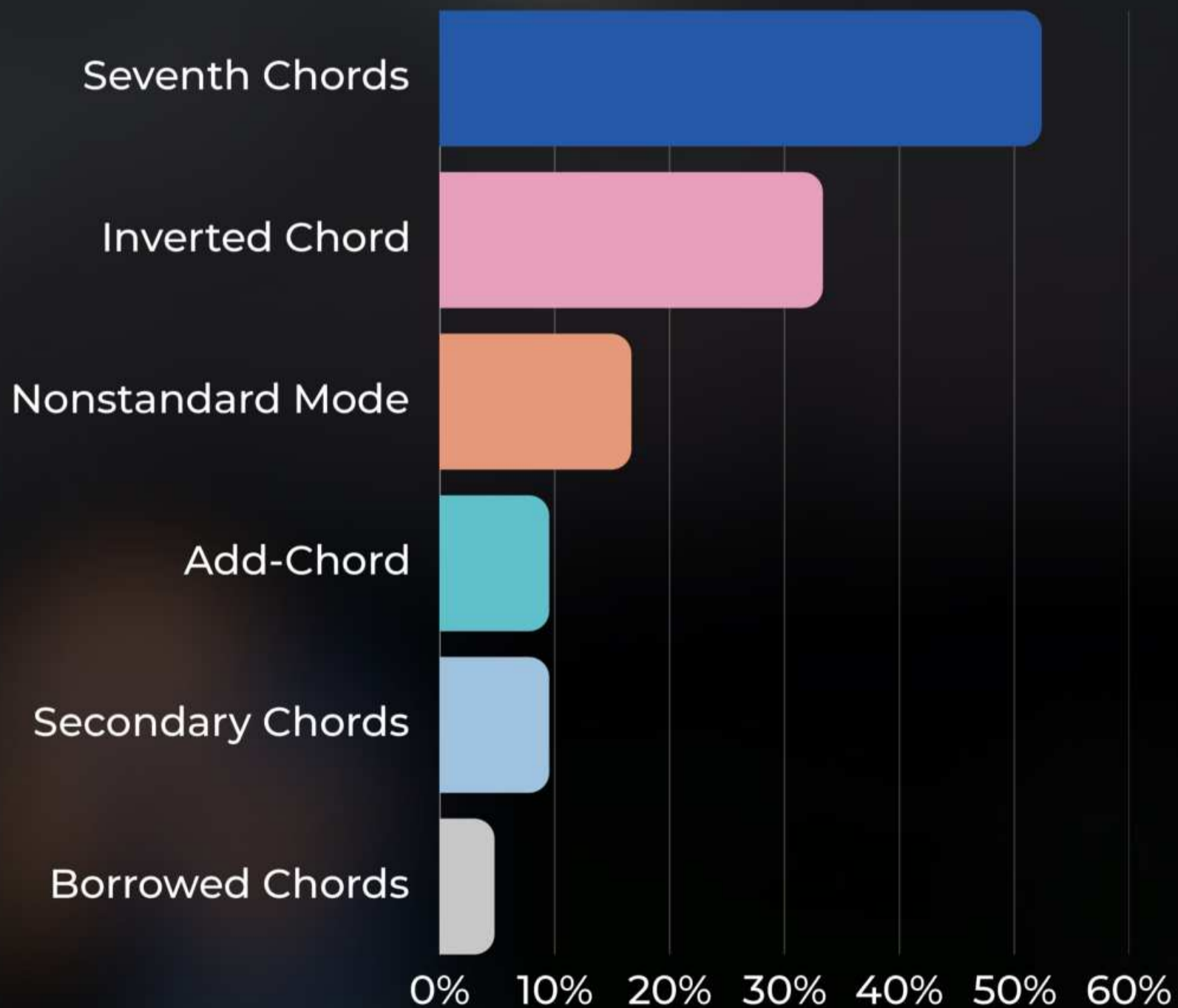


# Harry's Favorite Scales

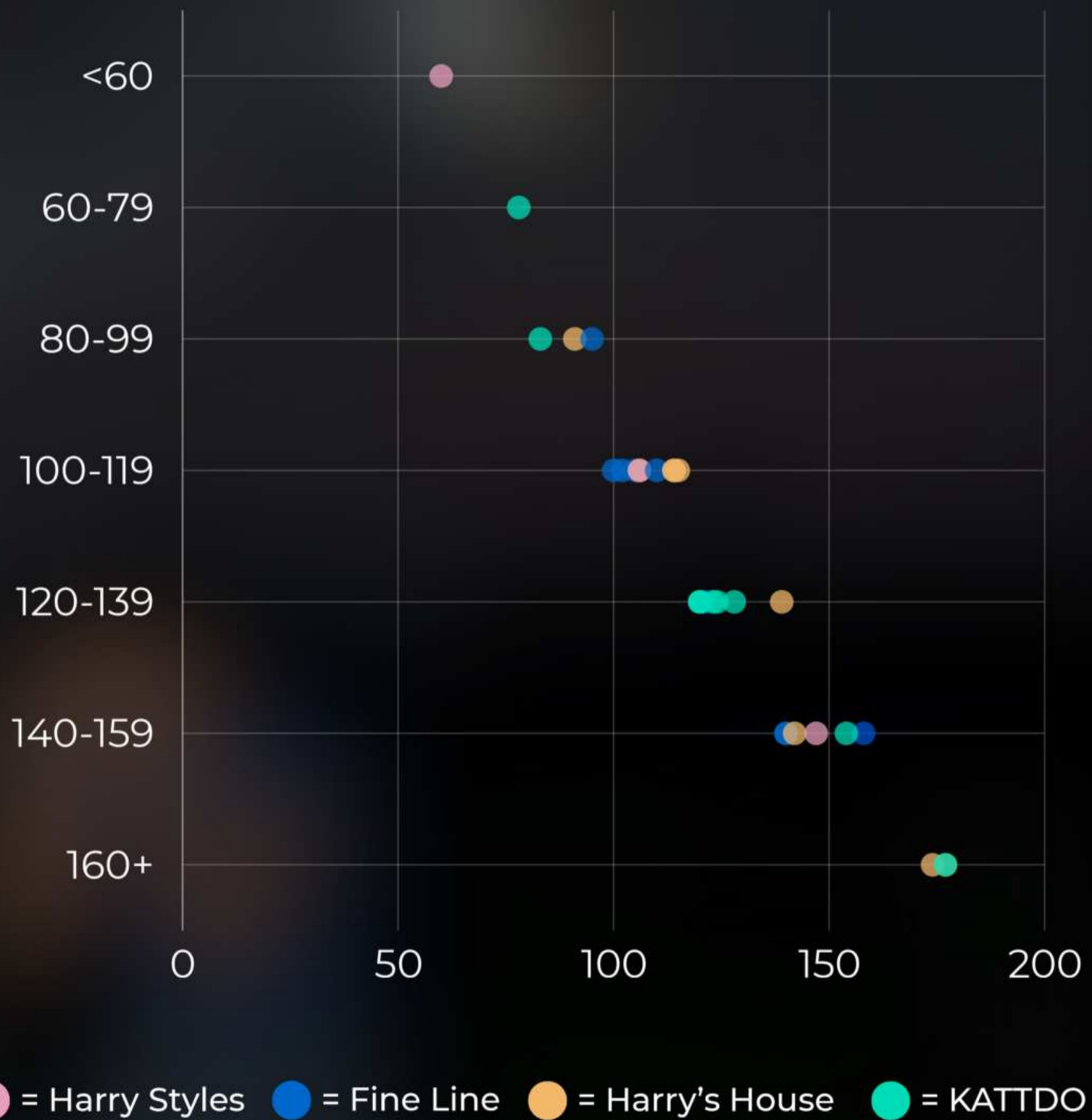


# Frequency of Special Chords

Across all albums



# Album Tempo Comparison



# Most Pleasing Bassline



1 To Be So Lonely 99.8

---



2 Music for a Sushi Restaurant 95.1

---



3 Daydreaming 90.7

---



4 Ready, Steady, Go! 89.0

---



5 Sunflower Vol. 6 88.9



# Highest Chord-Melody Tension



1 She 86.19

---



2 To Be So Lonely 84.6

---



3 Lights Up 90.7

---



4 As it Was 88.9

---



5 Adore You 73.0



# Most Unique Chord Progressions



1 Music For a Sushi Restaurant

97.91



2 American Girls

92



3 She

85



4 Are You Listening Yet?

80



5 Ready, Steady, Go!

76



Kiss All the Time. Disco, Occasionally

# Five songs on KATTDO have a 120 BPM

American Girls  
Dance No More  
Pop  
Ready, Steady, Go!  
Season 2 Weight Loss



Kiss All the Time. Disco, Occasionally

**Two Thirds** of  
the album is  
in a major  
key



Kiss All the Time. Disco, Occasionally

**Dance No More**  
has the most  
complex chord  
progression on  
the album



# Scale Frequency by Album



# Key Comparison

Across all albums



# About Our Metrics

## Chord Complexity

Chord Complexity tracks when a song goes **beyond simple three-note chords**—either by adding **extra tones** (like 7ths or add9s) or by borrowing notes from **outside the key**—creating richer, more sophisticated harmonies.

## Melodic Complexity

Melodic Complexity reflects two factors: the use of **notes outside the key** and **rhythmic syncopation**, together capturing how intricate or surprising a melody feels.

## Chord-Melody Tension

Chord-Melody Tension quantifies how often **melody notes fall outside the current chord**, producing dissonance that creates a sense of instability

## Chord Progression Novelty

Chord Progression Novelty measures how **uncommon a song's chord changes** are compared to others in the Hooktheory database, highlighting progressions that deviate from typical patterns.

## Chord Bass Melody

Chord-Bass Melody evaluates how smoothly the bass moves between chords, scoring higher when it travels **step-wise, ascending or descending**, instead of jumping directly between root position chords.

