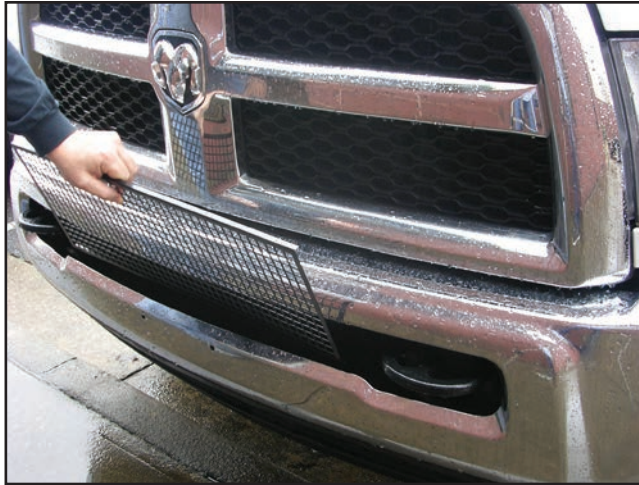


# UNDERHOOD

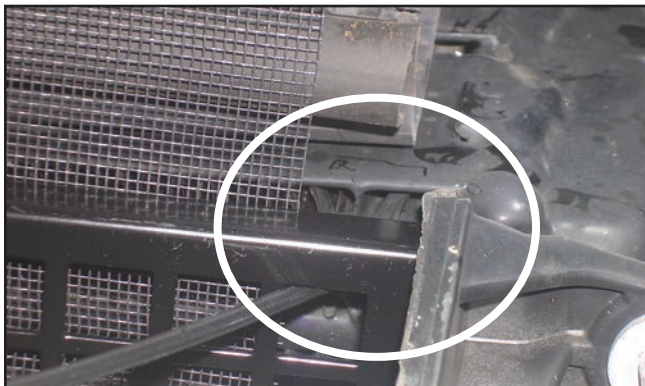
## Installation: '13-'18 Ram Intercooler Guard



Installing the Intercooler Guard is simply a matter of putting it through the bumper opening and attaching it to the intercooler. Once you have the Intercooler Guard inside the bodywork, you can get started.



Bend the end of the zip-tie to make feeding it through the Intercooler Guard and bodywork much easier.



If you are using the window screen that we supplied with the kit, you will want to cut some slots for the zip-tie to go through.

Slide the zip-tie through the intercooler guard and into the bodywork slot as shown.



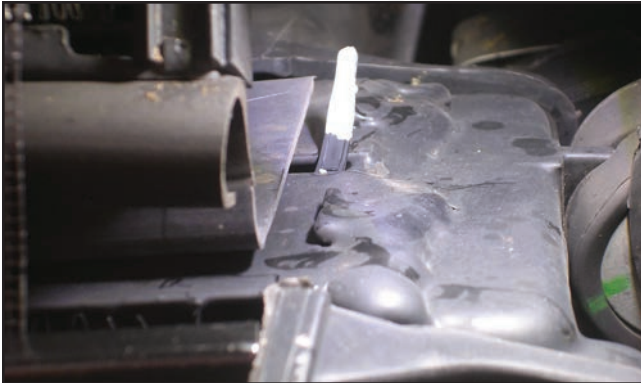
If you need more assistance, we are only a phone call away.

**(770) 886-2500**

Monday–Friday  
8:30am–5:30pm EST

**GENO'S GARAGE, INC.**  
1150 Samples Industrial Drive  
Cumming, Georgia 30041

# Installation: '13-'18 Ram Intercooler Guard



The zip-tie will exit from the bodywork as shown. You can now grab the end of the zip-tie and pull it forward to secure it.



Secure the zip-tie and pull it tight.



Install a zip-tie to the bottom of the intercooler guard and you are done with the installation.