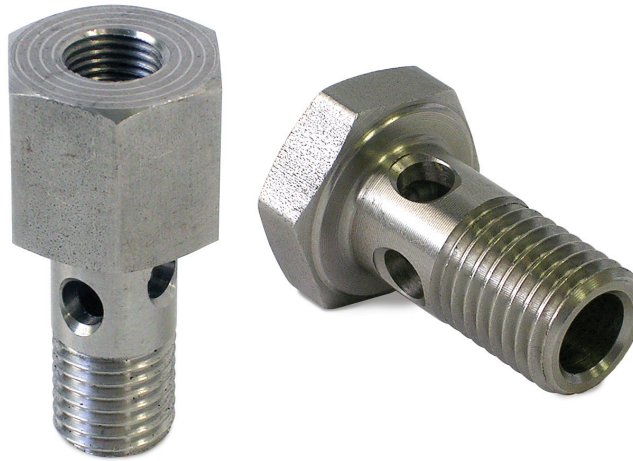


Torque Specification – 18 ft./lbs. Do Not Over-Torque!



The torque specification for the replacement tapped banjo fittings is 18 ft. lbs. This is the same torque specification as the original banjo bolt from Cummins.

The replacement fittings are made from a mild 12L14 steel, the same as the Cummins banjo bolts. The feature of the replacement fitting (a larger diameter hole - .180 versus .130 inches) can be detrimental (bolt shear) if you do not abide by the torque specification of 18 ft./lbs.

Use care in your assembly of the banjo fittings. A torque setting of 18 ft./lbs. is easily exceeded!



If you need more assistance, we are only a phone call away.

(770) 886-2500

Monday–Friday
8:30am–5:30pm EST

GENO'S GARAGE, INC.
1150 Samples Industrial Drive
Cumming, Georgia 30041